



<http://www.ebiz-tcf.eu>

DRAFT

IMPLEMENTATION GUIDE
TRANSACTION "PCO SHIPMENT REPORT"

Version: draft

Date of release: 26/6/2023

Document code: TRC020

technical Documentation: <http://www.ebiz.enea.it>

XML Schemas repository: <http://www.ebiz.enea.it/moda-ml/repository/schema/draft/default.asp>

Guides repository: <http://www.ebiz.enea.it/moda-ml/repository/guide/draft/default.asp>

Guide filename: TRC020-eBIZ-PcoShipmentReport.pdf

0. PREMISE

This document contains a proposal for the updating and extension of eBIZ specifications starting from the eBIZ version 2018. Under the name of 'Draft version' it is reported the result of an extensive work of analysis and consultation aimed at developing and maintaining eBIZ specifications.

In particular, the content of this proposal is the result of various activities, mainly those carried out within the framework of the **TRICK project** funded by the European Commission: grant agreement 958352, call H2020-LOW-CARBON-CIRCULAR-INDUSTRIES-2020 / H2020-LCCI-2020-EASME-twostage.

The technical contents are backwards compatible with the latest official published version, with the exclusion of the totally new concepts added explicitly for the version that are thought as incremental evolution of the knowledge base.

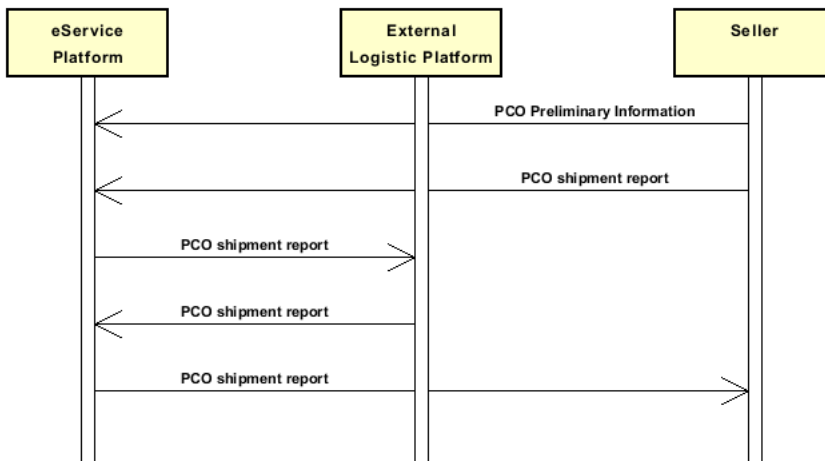
1. BUSINESS DESCRIPTION

1.1 Scope

This guide aims to illustrate the standard XML format of the document type "PCO shipment report", providing instructions for its use in the context of a TRANSPARENCY SYSTEM involving Fashion Manufacturers, their customers, third parties and in case customs authorities, eBusiness and eCommerce platforms. All the rules necessary for the construction and validation of the document are expressed through a specific XML schema, which is presented in detail in the paragraph "Implementation Guide".

1.2. Possible scenario

S1.1 PCO service execution



2. IMPLEMENTATION GUIDE

2.1 General structure of XML document

All the business data that can be exchanged through this class of documents are shown in the following "document structure", that provides a simplified vision of the Schema.

In particular:

- the two numbers following each element define its "cardinality" (minimum and maximum number of occurrences); the minimum equal zero indicates that the element is optional, the minimum greater than zero indicates that is mandatory;
- the bold character denotes the complex elements (aggregates of simple elements) that were built for the sake of functionality and re-usability of some complex informations sets. The child elements in each parent element are easily spotted as "indented";
- the symbol "@" denotes an attribute of the preceding element; here "the usage indicator (optional, required, ...)" is shown in square brackets.

Structure

PCOShipmentReport

@version [Optional] [Default= draft]

@useProfile [Optional]

```
| SRVheader 1-1
| | msgID 0-1
| | msgDate 0-1
| | @dateForm [Optional]
| | senderParty 1-1
| | @role [Optional]
| | @sender [Optional]
| | | id 1-1
| | | | @numberingOrg [Optional]
| | | legalName 0-1
| | | dept 0-1
| | | subDept 0-1
| | | person 0-1
| | | | @email [Optional]
| | | | @phone [Optional]
| | | | @fax [Optional]
| | | street 0-1
| | | city 0-1
| | | subCountry 0-1
| | | country 0-1
| | | postCode 0-1
| | | geoCoordinates 0-1
| | | | @um [Optional] [Default= DEGD]
| | | | @geoRefSystem [Optional]
| | | | | xGeoCoord 1-1
| | | | | yGeoCoord 1-1
| | | | | zGeoCoord 0-1
| | receiverParty 1-1
| | @role [Optional]
| | @sender [Optional]
| | | id 1-1
| | | | @numberingOrg [Optional]
| | | legalName 0-1
| | | dept 0-1
| | | subDept 0-1
| | | person 0-1
| | | | @email [Optional]
| | | | @phone [Optional]
| | | | @fax [Optional]
| | | street 0-1
| | | city 0-1
| | | subCountry 0-1
| | | country 0-1
| | | postCode 0-1
| | | geoCoordinates 0-1
| | | | @um [Optional] [Default= DEGD]
```

```

| | | @geoRefSystem [Optional]
| | | | xGeoCoord 1-1
| | | | yGeoCoord 1-1
| | | | zGeoCoord 0-1
| | platformServiceReference 1-1
| | | platformServiceCode 1-1
| | | | @codeList [Optional]
| | | | serviceTicketID 0-1
| | | | serviceRequestedAction 1-1
| | | | @codeList [Optional]
|
| PCOshipInfo 1-1
| | ESDId 0-1
| | customsESDId 0-1
| | shipmentID 0-1
| | grossWeight 0-1
| | | @um [Required]
| | netWeight 0-1
| | | @um [Required]
| | packageQty 1-1
| | seal 0-99
| | packageN 0-unbounded
| | | @numberingOrg [Optional]
| | | @packageContainerN [Optional]
| | MRN 0-1
| | PCOID 0-1
| | sadRef 0-1
| | | docID 0-1
| | | | @numberingOrg [Optional]
| | | | docDate 0-1
| | | | | @dateForm [Optional]
| | | | | customsClearanceDate 0-1
| | | | attachment 0-2
| | | | | @uid [Optional]
| | | | | | fileName 0-1
| | | | | | | @numberingOrg [Optional]
| | | | | | | binaryObject 0-1
| | | | | | | | @format [Optional]
| | | | | | | | @mime [Optional]
| | | | | | | | @encoding [Optional]
| | | | | | | | @characterSet [Optional]
| | | | | | externalReference 0-99
| | | | | | | uri 1-1
| | | | | | | | @isURL [Optional] [Default= true]
| | | | | | | | mimeTypeCode 0-1
| | | | | | | | formatCode 0-1
| | | | | | | | encodingCode 0-1
| | | | | | | | characterSetCode 0-1
| | | | | | | hashFootprint 0-1
| | | | | | | | @schemeID [Optional]
| | | | | | | | @hashMethod [Required]
| | | | | | | blockChainReference 0-9
| | | | | | | | uri 1-1
| | | | | | | | | @isURL [Optional] [Default= true]
| | | | | | | | | transactionReceipt 1-9
| | | | eadRef 0-1
| | | | | attachment 0-2
| | | | | | @uid [Optional]
| | | | | | | fileName 0-1
| | | | | | | | @numberingOrg [Optional]
| | | | | | | | binaryObject 0-1
| | | | | | | | | @format [Optional]
| | | | | | | | | @mime [Optional]
| | | | | | | | | @encoding [Optional]
| | | | | | | | | @characterSet [Optional]
| | | | | | | | externalReference 0-99
| | | | | | | | | uri 1-1
| | | | | | | | | | @isURL [Optional] [Default= true]

```

- | mimeCode 0-1
- | formatCode 0-1
- | encodingCode 0-1
- | characterSetCode 0-1
- | hashFootprint 0-1
- | @schemeID [Optional]
- | @hashMethod [Required]
- | **blockChainReference 0-9**
- | uri 1-1
- | @isURL [Optional] [Default= true]
- | transactionReceipt 1-9

accountingSupplier 1-1

- | id 1-1
- | @numberingOrg [Optional]
- | additionalIdentifier 0-9
- | @numberingOrg [Optional]
- | @idQualifier [Optional]
- | authExporterFlag 0-1
- | @authorizationNumber [Optional]
- | legalName 0-1
- | dept 0-1
- | subDept 0-1
- | person 0-1
- | @email [Optional]
- | @phone [Optional]
- | @fax [Optional]
- | street 0-1
- | city 0-1
- | subCountry 0-1
- | country 0-1
- | postCode 0-1
- | **geoCoordinates 0-1**
- | @um [Optional] [Default= DEGD]
- | @geoRefSystem [Optional]
- | | xGeoCoord 1-1
- | | yGeoCoord 1-1
- | | zGeoCoord 0-1

exporter 0-1

- | id 1-1
- | @numberingOrg [Optional]
- | additionalIdentifier 0-9
- | @numberingOrg [Optional]
- | @idQualifier [Optional]
- | authExporterFlag 0-1
- | @authorizationNumber [Optional]
- | legalName 0-1
- | dept 0-1
- | subDept 0-1
- | person 0-1
- | @email [Optional]
- | @phone [Optional]
- | @fax [Optional]
- | street 0-1
- | city 0-1
- | subCountry 0-1
- | country 0-1
- | postCode 0-1
- | **geoCoordinates 0-1**
- | @um [Optional] [Default= DEGD]
- | @geoRefSystem [Optional]
- | | xGeoCoord 1-1
- | | yGeoCoord 1-1
- | | zGeoCoord 0-1

representative 0-1

- | id 1-1
- | @numberingOrg [Optional]
- | legalName 0-1
- | dept 0-1

```

| | | subDept 0-1
| | | person 0-1
| | | @email [Optional]
| | | @phone [Optional]
| | | @fax [Optional]
| | | street 0-1
| | | city 0-1
| | | subCountry 0-1
| | | country 0-1
| | | postCode 0-1
| | | geoCoordinates 0-1
| | | @um [Optional] [Default= DEGD]
| | | @geoRefSystem [Optional]
| | | | xGeoCoord 1-1
| | | | yGeoCoord 1-1
| | | | zGeoCoord 0-1
| | buyer 1-1
| | | @logo [Optional]
| | | @sender [Optional]
| | | id 1-1
| | | | @numberingOrg [Optional]
| | | additionalIdentifier 0-9
| | | | @numberingOrg [Optional]
| | | | @idQualifier [Optional]
| | | legalName 0-1
| | | dept 0-1
| | | subDept 0-1
| | | person 0-1
| | | | @email [Optional]
| | | | @phone [Optional]
| | | | @fax [Optional]
| | | street 0-1
| | | city 0-1
| | | subCountry 0-1
| | | country 0-1
| | | postCode 0-1
| | | geoCoordinates 0-1
| | | @um [Optional] [Default= DEGD]
| | | @geoRefSystem [Optional]
| | | | xGeoCoord 1-1
| | | | yGeoCoord 1-1
| | | | zGeoCoord 0-1
| | consignee 0-1
| | | id 0-1
| | | | @numberingOrg [Optional]
| | | legalName 0-1
| | | dept 0-1
| | | subDept 0-1
| | | person 0-1
| | | | @email [Optional]
| | | | @phone [Optional]
| | | | @fax [Optional]
| | | street 0-1
| | | city 0-1
| | | subCountry 0-1
| | | country 0-1
| | | postCode 0-1
| | | geoCoordinates 0-1
| | | @um [Optional] [Default= DEGD]
| | | @geoRefSystem [Optional]
| | | | xGeoCoord 1-1
| | | | yGeoCoord 1-1
| | | | zGeoCoord 0-1
| | trade 1-1
| | | - choose -
| | | | incoTermText 1-1
| | | - or -
| | | | incoTerm 1-1

```

```

- end choose -
- choose -
| | | tradeLocation 0-1
| | | | location 0-1
| | | | | @LRI [Optional]
| | | | | legalName 0-1
| | | | | dept 0-1
| | | | | subDept 0-1
| | | | | person 0-1
| | | | | | @email [Optional]
| | | | | | @phone [Optional]
| | | | | | @fax [Optional]
| | | | | street 0-1
| | | | | city 0-1
| | | | | subCountry 0-1
| | | | | country 0-1
| | | | | postCode 0-1
| | | | | geoCoordinates 0-1
| | | | | | @um [Optional] [Default= DEGD]
| | | | | | @geoRefSystem [Optional]
| | | | | | | xGeoCoord 1-1
| | | | | | | yGeoCoord 1-1
| | | | | | | zGeoCoord 0-1
- or -
| | | | location 0-1
| | | | | @LRI [Optional]
- end choose -
| | | exportCustomOffice 1-1
| | | | customOfficeID 1-1
| | | | | customOfficeName 0-1
| | | | | country 1-1
| | | | exitCustomOffice 1-1
| | | | | customOfficeID 1-1
| | | | | | customOfficeName 0-1
| | | | | | country 1-1
| | | | bondedWarehouse 0-1
| | | | | customsAuthCode 1-1
| | | | | location 1-1
| | | | | | @LRI [Optional]
| | | | | | description 0-1
| | | | | | @ln [Optional]
| | | | transportRouteInfo 0-99
| | | | | @transitZone [Required]
| | | | | | customsTransportMeansInfo 1-99
| | | | | | | transMeansID 0-1
| | | | | | | transMode 0-1
| | | | | | | description 0-1
| | | | | | | @ln [Optional]
| | | | | | | country 0-1
| | | | tracedObject 0-unbounded
| | | | | @objectInstanceTypeCode [Required]
| | | | | | objectInstanceIdentification 1-1
| | | | | | | @objectInstanceTypeCode [Required]
| | | | | | | | objectID 1-9
| | | | | | | | @schemeID [Required]
| | | | | | | productIDandQty 1-99
| | | | | | | | uniqueProductID 1-1
| | | | | | | | | @schemeID [Required]
| | | | | | | | | qty 0-2
| | | | | | | | | @um [Required]
| | | | | | | objectTypeCode 1-1
| | | invoiceInfo 1-99
| | | | msgID 1-1
| | | | | msgDate 1-1
| | | | | | @dateForm [Optional]
| | | | | | msgCurrency 0-1
| | | | | | natureOfTransaction 1-1

```

```

| msgAmount 1-1
| @currency [Optional]
| refDoc 0-1
| @docType [Required]
| | docID 1-2
| | | @numberingOrg [Optional]
| | docDate 0-1
| | | @dateForm [Optional]
| | season 0-1
| | | @numberingOrg [Optional]
| | | @codeList [Optional]
| | | @listName [Optional]
| | | @listVersion [Optional]
| | itemID 0-1
| | attachment 0-1
| | | @uid [Optional]
| | | | fileName 0-1
| | | | | @numberingOrg [Optional]
| | | | binaryObject 0-1
| | | | | @format [Optional]
| | | | | @mime [Optional]
| | | | | @encoding [Optional]
| | | | | @characterSet [Optional]
| | | | externalReference 0-99
| | | | | uri 1-1
| | | | | | @isURL [Optional] [Default= true]
| | | | | | mimeTypeCode 0-1
| | | | | | formatCode 0-1
| | | | | | encodingCode 0-1
| | | | | | characterSetCode 0-1
| | | | | hashFootprint 0-1
| | | | | | @schemeID [Optional]
| | | | | | @hashMethod [Required]
| | | | | blockChainReference 0-9
| | | | | | uri 1-1
| | | | | | | @isURL [Optional] [Default= true]
| | | | | | transactionReceipt 1-9
| | attachment 0-1
| | | @uid [Optional]
| | | | fileName 0-1
| | | | | @numberingOrg [Optional]
| | | | binaryObject 0-1
| | | | | @format [Optional]
| | | | | @mime [Optional]
| | | | | @encoding [Optional]
| | | | | @characterSet [Optional]
| | | | externalReference 0-99
| | | | | uri 1-1
| | | | | | @isURL [Optional] [Default= true]
| | | | | | mimeTypeCode 0-1
| | | | | | formatCode 0-1
| | | | | | encodingCode 0-1
| | | | | | characterSetCode 0-1
| | | | | hashFootprint 0-1
| | | | | | @schemeID [Optional]
| | | | | | @hashMethod [Required]
| | | | | blockChainReference 0-9
| | | | | | uri 1-1
| | | | | | | @isURL [Optional] [Default= true]
| | | | | | transactionReceipt 1-9
| invoiceItem 1-unbounded
| | itemID 1-1
| | | refDoc 0-1
| | | | @docType [Required]
| | | | | docID 1-2
| | | | | | @numberingOrg [Optional]
| | | | | docDate 0-1
| | | | | | @dateForm [Optional]

```



```

| season 0-1
|   @numberingOrg [Optional]
|   @codeList [Optional]
|   @listName [Optional]
|   @listVersion [Optional]
| itemID 0-1
| attachment 0-1
|   @uid [Optional]
|     fileName 0-1
|       @numberingOrg [Optional]
|     binaryObject 0-1
|       @format [Optional]
|       @mime [Optional]
|       @encoding [Optional]
|       @characterSet [Optional]
|     externalReference 0-99
|       uri 1-1
|         @isURL [Optional] [Default= true]
|       mimeTypeCode 0-1
|       formatCode 0-1
|       encodingCode 0-1
|       characterSetCode 0-1
|     hashFootprint 0-1
|       @schemeID [Optional]
|       @hashMethod [Required]
|     blockChainReference 0-9
|       uri 1-1
|         @isURL [Optional] [Default= true]
|       transactionReceipt 1-9
|
| customsStat 1-1
|   @schemeID [Optional] [Default= TARIC]
| description 0-9
|   @ln [Optional]
| netWeight 0-1
|   @um [Required]
| qty 1-2
|   @um [Required]
| year 0-1
| price 1-1
|   @um [Optional]
|   @priceQualifier [Optional] [Default= NET]
|   @currency [Optional]
| amount 1-1
|   @currency [Optional]
| productOrigin 1-1
|   made 1-1
|     refDoc 0-9
|       @docType [Required]
|       docID 1-2
|         @numberingOrg [Optional]
|       docDate 0-1
|         @dateForm [Optional]
|       season 0-1
|         @numberingOrg [Optional]
|         @codeList [Optional]
|         @listName [Optional]
|         @listVersion [Optional]
|       itemID 0-1
|     attachment 0-1
|       @uid [Optional]
|         fileName 0-1
|           @numberingOrg [Optional]
|         binaryObject 0-1
|           @format [Optional]
|           @mime [Optional]
|           @encoding [Optional]
|           @characterSet [Optional]
|         externalReference 0-99

```

```

| | | | | | | uri 1-1
| | | | | | |   @isURL [Optional] [Default= true]
| | | | | | | mimeCode 0-1
| | | | | | | formatCode 0-1
| | | | | | | encodingCode 0-1
| | | | | | | characterSetCode 0-1
| | | | | | | hashFootprint 0-1
| | | | | | | @schemeID [Optional]
| | | | | | | @hashMethod [Required]
| | | | | | | blockChainReference 0-9
| | | | | | |   uri 1-1
| | | | | | |   @isURL [Optional] [Default= true]
| | | | | | |   transactionReceipt 1-9
| | | | | | | tracedObject 0-unbounded
| | | | | | | @objectInstanceTypeCode [Required]
| | | | | | |   objectInstanceIdentification 1-1
| | | | | | |   @objectInstanceTypeCode [Required]
| | | | | | |   objectID 1-9
| | | | | | |   @schemeID [Required]
| | | | | | |   productIDandQty 1-99
| | | | | | |   uniqueProductID 1-1
| | | | | | |   @schemeID [Required]
| | | | | | |   qty 0-2
| | | | | | |   @um [Required]
| | | | | | | objectTypeCode 1-1
|
| note 0-9
| @numberingOrg [Optional]
| @codeList [Optional]
| @noteLabel [Optional]

```

2.2 Detailed description of document elements

Following tables show all elements (complex and simple) used in this document. Description includes: 1) element's information: xml tag, name, brief description, data type and syntax constraints; 2) information about use of the element in a particular position in the document: xpath and possible associated notes.

2.2.1 Complex elements (Aggregate Business Information Entities)

Complex elements are those elements whose content is composed of other elements (childs). Complex elements are alphabetically ordered.

accountingSupplier	Details of the Accounting Supplier (party that supplies the good or service and issues the invoice) - base type: Nad, (XPath PCOShipmentReport/PCOshipInfo/accountingSupplier) 1-1
attachment	an attached document. An attachment can refer to an external document or be included with the document being exchanged (XPath PCOShipmentReport/invoiceInfo/invoiceInfoItem/refDoc/attachment) 0-1 (XPath PCOShipmentReport/invoiceInfo/invoiceInfoItem/productOrigin/refDoc/attachment) 0-1 (XPath PCOShipmentReport/invoiceInfo/attachment) 0-1 - note: Here the pdf invoice can be attached as binary object or its remote location can be provided (XPath PCOShipmentReport/PCOshipInfo/eadRef/attachment) 0-2 - note: The document in pdf and/or binary format can be attached here (XPath PCOShipmentReport/invoiceInfo/refDoc/attachment) 0-1 (XPath PCOShipmentReport/PCOshipInfo/sadRef/attachment) 0-2 - note: The document in pdf and/or binary format can be attached here
blockChainReference	blockchain reference - base type: string, max length: 80, (XPath PCOShipmentReport/PCOshipInfo/eadRef/attachment/blockChainReference) 0-9 (XPath PCOShipmentReport/invoiceInfo/invoiceInfoItem/productOrigin/refDoc/attachment/blockChainReference) 0-9 (XPath PCOShipmentReport/invoiceInfo/invoiceInfoItem/refDoc/attachment/blockChainReference) 0-9 (XPath PCOShipmentReport/invoiceInfo/attachment/blockChainReference) 0-9 (XPath PCOShipmentReport/PCOshipInfo/sadRef/attachment/blockChainReference) 0-9 (XPath PCOShipmentReport/invoiceInfo/refDoc/attachment/blockChainReference) 0-9
bondedWarehouse	Details about the bonded warehouse (XPath PCOShipmentReport/PCOshipInfo/bondedWarehouse) 0-1
buyer	details of the Buyer (party that buys the good or service that is object of the current collaborative process) - base type: Nad, (XPath PCOShipmentReport/PCOshipInfo/buyer) 1-1
consignee	Details of the party to which goods are consigned - base type: Nad, (XPath PCOShipmentReport/PCOshipInfo/consignee) 0-1
customsTransportMeansInfo	Information about a means of transport required by the customs declaration (SAD) (XPath PCOShipmentReport/PCOshipInfo/transportRouteInfo/customsTransportMeansInfo) 1-99 - note: Information about the transport means used for the leg
eadRef	References to Export Accompanying Document (EAD) issued by Customs Authority (XPath PCOShipmentReport/PCOshipInfo/eadRef) 0-1
exitCustomOffice	Exit customs office - customs office through which the goods leave the customs territory of the Union - base type: , (XPath PCOShipmentReport/PCOshipInfo/exitCustomOffice) 1-1
exportCustomOffice	Dispatch/export customs office - base type: , (XPath PCOShipmentReport/PCOshipInfo/exportCustomOffice) 1-1

exporter	Data of the exporter (party that sends the goods) - base type: Nad, (XPath PCOShipmentReport/PCOshipInfo/exporter) 0-1
externalReference	details about an external object, such as a document stored at a remote location (XPath PCOShipmentReport/PCOshipInfo/eadRef/attachment/externalReference) 0-99 (XPath PCOShipmentReport/invoiceInfo/attachment/externalReference) 0-99 (XPath PCOShipmentReport/invoiceInfo/refDoc/attachment/externalReference) 0-99 (XPath PCOShipmentReport/PCOshipInfo/sadRef/attachment/externalReference) 0-99 (XPath PCOShipmentReport/invoiceInfo/invoiceInfoItem/ productOrigin/refDoc/attachment/externalReference) 0-99 (XPath PCOShipmentReport/invoiceInfo/invoiceInfoItem/ refDoc/attachment/externalReference) 0-99
geoCoordinates	geographical coordinates (XPath PCOShipmentReport/SRVheader/receiverParty/geoCoordinates) 0-1 (XPath PCOShipmentReport/PCOshipInfo/exporter/geoCoordinates) 0-1 (XPath PCOShipmentReport/PCOshipInfo/representative/geoCoordinates) 0-1 (XPath PCOShipmentReport/PCOshipInfo/buyer/geoCoordinates) 0-1 (XPath PCOShipmentReport/PCOshipInfo/consignee/geoCoordinates) 0-1 (XPath PCOShipmentReport/SRVheader/senderParty/geoCoordinates) 0-1 (XPath PCOShipmentReport/PCOshipInfo/accountingSupplier/geoCoordinates) 0-1 (XPath PCOShipmentReport/PCOshipInfo/trade/tradeLocation/geoCoordinates) 0-1
invoiceInfo	Information about an invoice (XPath PCOShipmentReport/invoiceInfo) 1-99
invoiceInfoItem	Information about an invoice item (line) (XPath PCOShipmentReport/invoiceInfo/invoiceInfoItem) 1-unbounded
objectInstanceIdentification	Identification of an object instance, it could contain more than one identifier of the same object as long as they refer to different identification schemes (XPath PCOShipmentReport/PCOshipInfo/tracedObject/objectInstanceIdentification) 1-1 - note: <i>unique identifier of the traced object.</i> (XPath PCOShipmentReport/invoiceInfo/invoiceInfoItem/ tracedObject/objectInstanceIdentification) 1-1 - note: <i>unique identifier of the traced object.</i>
PCOshipInfo	Various information on transport and on transport item instances/lots referring to the content of the entire PCO shipment report (XPath PCOShipmentReport/PCOshipInfo) 1-1
platformServiceReference	service instruction and reference - base type: string, (XPath PCOShipmentReport/SRVheader/platformServiceReference) 1-1
productIDandQty	product identifier and its quantity (XPath PCOShipmentReport/invoiceInfo/invoiceInfoItem/ tracedObject/productIDandQty) 1-99 - note: <i>inside an event it should indicate the effectively USED (input) or RESULTING (output) quantity of the lot as a consequence of the event. Max cardinality is 1 when @objectInstanceTypeCode='IST'</i> (XPath PCOShipmentReport/PCOshipInfo/tracedObject/productIDandQty) 1-99 - note: <i>inside an event it should indicate the effectively USED (input) or RESULTING (output) quantity of the lot as a consequence of the event. Max cardinality is 1 when @objectInstanceTypeCode='IST'</i>
productOrigin	Origin of the product according to customs regulations (XPath PCOShipmentReport/invoiceInfo/invoiceInfoItem/productOrigin) 1-1
receiverParty	Details of the party receiving the document. - base type: Nad, (XPath PCOShipmentReport/SRVheader/receiverParty) 1-1
refDoc	identification of a document and of an item thereof, to which the message makes reference (XPath PCOShipmentReport/invoiceInfo/invoiceInfoItem/refDoc) 0-1 (XPath PCOShipmentReport/invoiceInfo/invoiceInfoItem/ productOrigin/refDoc) 0-9 - note: <i>reference to document certifying the origin</i> (XPath PCOShipmentReport/invoiceInfo/refDoc) 0-1 Best Practice - note: <i>Here the order whose originated the invoice can be identified</i>
representative	Details of the party representing the exporter at customs

	- base type: Nad, (XPath PCOShipmentReport/PCOshipInfo/representative) 0-1
sadRef	References to released Single Administrative Document (SAD) issued by Customs Authority (XPath PCOShipmentReport/PCOshipInfo/sadRef) 0-1
senderParty	Details of the party sending the document. - base type: Nad, (XPath PCOShipmentReport/SRVheader/senderParty) 1-1
SRVheader	header of documents supporting ePlatform services (XPath PCOShipmentReport/SRVheader) 1-1
tracedObject	traced product instance or lot. Usually it refers to just one productID (i.e. one SKU); nevertheless if the lot is made of clothing, it can refer to more than one SKUs which differ in size. - base type: , (XPath PCOShipmentReport/invoiceInfo/invoiceInfoItem/tracedObject) 0-unbounded (XPath PCOShipmentReport/PCOshipInfo/tracedObject) 0-unbounded
trade	general terms of trade for the specified supply (XPath PCOShipmentReport/PCOshipInfo/trade) 1-1
tradeLocation	data relating to the place to which the trade conditions refer (indicate at least element location or address, city and country) - base type: Nad, (XPath PCOShipmentReport/PCOshipInfo/trade/tradeLocation) 0-1 - note: <i>address of the place to which the INCOTERM applies</i>
transportRouteInfo	Information for customs use on transport relating to a transit area of the shipment (XPath PCOShipmentReport/PCOshipInfo/transportRouteInfo) 0-99

2.2.2 Simple elements (Basic Business Information Entities)

Simple elements are those elements whose content is characterized by a data type plus a domain of possible values. Simple elements are alphabetically ordered.

additionalIdentifier	additional identification code of a Party, for example customs registries or others - base type: string, max length: 15, (XPath PCOShipmentReport/PCOshipInfo/exporter/additionalIdentifier) 0-9 - note: <i>If available, indicate the REX code - identifier in EU Registered Exporter system (numberingOrg='REX')</i> (XPath PCOShipmentReport/PCOshipInfo/buyer/additionalIdentifier) 0-9 - note: <i>identifiers for example for exports, such as MID (Manufacturer Identification Code), REX (identifier in Registered Exporter system)</i> (XPath PCOShipmentReport/PCOshipInfo/accountingSupplier/additionalIdentifier) 0-9 - note: <i>If available, indicate the REX code - identifier in EU Registered Exporter system (numberingOrg='REX')</i>
amount	total monetary value of the goods and services considered in the message line (usually net price x quantity) - base type: decimal, min inclusive: 0, fraction digits: 2, (XPath PCOShipmentReport/invoiceInfo/invoiceInfoItem/amount) 1-1
authExporterFlag	Indicates whether the supplier is an Exporter authorized by the Customs Authority (value 'true') or not (value 'false') - base type: boolean, (XPath PCOShipmentReport/PCOshipInfo/exporter/authExporterFlag) 0-1 (XPath PCOShipmentReport/PCOshipInfo/accountingSupplier/authExporterFlag) 0-1
@authorizationNumber	Authorization number - base type: string, (XPath PCOShipmentReport/PCOshipInfo/exporter/authExporterFlag/@authorizationNumber) [Optional] (XPath PCOShipmentReport/PCOshipInfo/accountingSupplier/authExporterFlag/@authorizationNumber) [Optional]

binaryObject	<p>a binary large object containing an attached document, Coding 'base64Binary' is recommended.</p> <ul style="list-style-type: none"> - base type: base64Binary, (XPath PCOShipmentReport/PCOshipInfo/sadRef/attachment/binaryObject) 0-1 (XPath PCOShipmentReport/PCOshipInfo/eadRef/attachment/binaryObject) 0-1 (XPath PCOShipmentReport/invoiceInfo/invoiceInfo/infotem/refDoc/attachment/binaryObject) 0-1 (XPath PCOShipmentReport/invoiceInfo/attachment/binaryObject) 0-1 (XPath PCOShipmentReport/invoiceInfo/refDoc/attachment/binaryObject) 0-1 (XPath PCOShipmentReport/invoiceInfo/invoiceInfo/infotem/productOrigin/refDoc/attachment/binaryObject) 0-1
@characterSet	<p>the character set of the binary object (examples UTF-8, UTF-16, Windows-1252, ISO-8859-7,..)</p> <ul style="list-style-type: none"> - base type: normalizedString, (XPath PCOShipmentReport/invoiceInfo/refDoc/attachment/binaryObject/@characterSet) [Optional] (XPath PCOShipmentReport/PCOshipInfo/sadRef/attachment/binaryObject/@characterSet) [Optional] (XPath PCOShipmentReport/invoiceInfo/invoiceInfo/infotem/productOrigin/refDoc/attachment/binaryObject/@characterSet) [Optional] (XPath PCOShipmentReport/invoiceInfo/attachment/binaryObject/@characterSet) [Optional] (XPath PCOShipmentReport/invoiceInfo/invoiceInfo/infotem/refDoc/attachment/binaryObject/@characterSet) [Optional] (XPath PCOShipmentReport/PCOshipInfo/eadRef/attachment/binaryObject/@characterSet) [Optional]
characterSetCode	<p>the character set of an external document (examples UTF-8, UTF-16, Windows-1252, ISO-8859-7,..)</p> <ul style="list-style-type: none"> - base type: normalizedString, (XPath PCOShipmentReport/invoiceInfo/invoiceInfo/infotem/productOrigin/refDoc/attachment/externalReference/characterSetCode) 0-1 (XPath PCOShipmentReport/invoiceInfo/attachment/externalReference/characterSetCode) 0-1 (XPath PCOShipmentReport/invoiceInfo/invoiceInfo/infotem/refDoc/attachment/externalReference/characterSetCode) 0-1 (XPath PCOShipmentReport/PCOshipInfo/sadRef/attachment/externalReference/characterSetCode) 0-1 (XPath PCOShipmentReport/PCOshipInfo/eadRef/attachment/externalReference/characterSetCode) 0-1 (XPath PCOShipmentReport/invoiceInfo/refDoc/attachment/externalReference/characterSetCode) 0-1
city	<p>name of the city (town, village)</p> <ul style="list-style-type: none"> - base type: string, max length: 40, (XPath PCOShipmentReport/SRVheader/senderParty/city) 0-1 (XPath PCOShipmentReport/PCOshipInfo/trade/tradeLocation/city) 0-1 (XPath PCOShipmentReport/PCOshipInfo/accountingSupplier/city) 0-1 (XPath PCOShipmentReport/PCOshipInfo/consignee/city) 0-1 (XPath PCOShipmentReport/PCOshipInfo/exporter/city) 0-1 (XPath PCOShipmentReport/PCOshipInfo/buyer/city) 0-1 (XPath PCOShipmentReport/PCOshipInfo/representative/city) 0-1 (XPath PCOShipmentReport/SRVheader/receiverParty/city) 0-1
@codeList	<p>it specifies the URL where the list of codes used to make an instance of the element can be found</p> <ul style="list-style-type: none"> - base type: string, max length: 255, (XPath PCOShipmentReport/note/@codeList) [Optional] - nota: <i>must be used to provide (URL) the list of codes used in "noteLabel"</i> (XPath PCOShipmentReport/invoiceInfo/invoiceInfo/infotem/refDoc/season/@codeList) [Optional] - nota: <i>this attribute should be used either single or coupled with "listName" and "listVersion"</i> (XPath PCOShipmentReport/invoiceInfo/refDoc/season/@codeList) [Optional] - nota: <i>this attribute should be used either single or coupled with "listName" and "listVersion"</i> (XPath PCOShipmentReport/SRVheader/platformServiceReference/platformServiceCode/@codeList) [Optional] - nota: <i>indicate the URL of the platform supplying the service</i> (XPath PCOShipmentReport/invoiceInfo/invoiceInfo/infotem/

	<p>productOrigin/refDoc/season/@codeList) [Optional] - nota: <i>this attribute should be used either single or coupled with "listName" and "listVersion"</i> (XPath PCOShipmentReport/SRVheader/platformServiceReference/serviceRequestedAction/@codeList) [Optional] - nota: <i>Insert URL codelist of the platform services actions available.</i></p>
country	<p>code of the nation - base type: string, cod. table: T10 http://www.ebiz.enea.it/moda-ml/repository/codelist/draft/gc_T10.xml (XPath PCOShipmentReport/PCOshipInfo/exportCustomOffice/country) 1-1 (XPath PCOShipmentReport/PCOshipInfo/trade/tradeLocation/country) 0-1 (XPath PCOShipmentReport/PCOshipInfo/transportRouteInfo/customsTransportMeansInfo/country) 0-1 - note: <i>Country of registration of the transport means</i> (XPath PCOShipmentReport/PCOshipInfo/exitCustomOffice/country) 1-1 (XPath PCOShipmentReport/PCOshipInfo/consignee/country) 0-1 (XPath PCOShipmentReport/PCOshipInfo/exporter/country) 0-1 (XPath PCOShipmentReport/PCOshipInfo/accountingSupplier/country) 0-1 (XPath PCOShipmentReport/PCOshipInfo/buyer/country) 0-1 (XPath PCOShipmentReport/PCOshipInfo/representative/country) 0-1 (XPath PCOShipmentReport/SRVheader/senderParty/country) 0-1 (XPath PCOShipmentReport/SRVheader/receiverParty/country) 0-1</p>
@currency	<p>currency in which a specified monetary data is expressed - base type: string, cod. table: T9 http://www.ebiz.enea.it/moda-ml/repository/codelist/draft/gc_T9.xml (XPath PCOShipmentReport/invoiceInfo/invoiceInfoItem/price/@currency) [Optional] - nota: <i>Currency referred by the price.</i> (XPath PCOShipmentReport/invoiceInfo/msgAmount/@currency) [Optional] (XPath PCOShipmentReport/invoiceInfo/invoiceInfoItem/amount/@currency) [Optional]</p>
customOfficeID	<p>Customs office identifier - base type: string, (XPath PCOShipmentReport/PCOshipInfo/exitCustomOffice/customOfficeID) 1-1 (XPath PCOShipmentReport/PCOshipInfo/exportCustomOffice/customOfficeID) 1-1</p>
customOfficeName	<p>name of the customs office - base type: string, (XPath PCOShipmentReport/PCOshipInfo/exitCustomOffice/customOfficeName) 0-1 (XPath PCOShipmentReport/PCOshipInfo/exportCustomOffice/customOfficeName) 0-1</p>
customsAuthCode	<p>Authorization code assigned to the customs warehouse - base type: string, (XPath PCOShipmentReport/PCOshipInfo/bondedWarehouse/customsAuthCode) 1-1</p>
customsClearanceDate	<p>date of customs clearance, according to one of the patterns YYYY-MM-DD, YYYY-MM-DD:HH-MM or YYYY-WW. - base type: string, (XPath PCOShipmentReport/PCOshipInfo/sadRef/customsClearanceDate) 0-1</p>
customsESDId	<p>Identifier shipping dossier associated to the customs declaration assigned by the Customs Authority - base type: string, (XPath PCOShipmentReport/PCOshipInfo/customsESDId) 0-1</p>
customsStat	<p>statistic code assigned by Customs to a specified product (TARIC code) - base type: string, max length: 15, (XPath PCOShipmentReport/invoiceInfo/invoiceInfoItem/customsStat) 1-1 - note: <i>Fill with TARIC code</i></p>
@dateForm	<p>format used for the date - base type: string, cod. table: NT29 http://www.ebiz.enea.it/moda-ml/repository/codelist/draft/gc_NT29.xml (XPath PCOShipmentReport/SRVheader/msgDate/@dateForm) [Optional] (XPath PCOShipmentReport/invoiceInfo/refDoc/docDate/@dateForm) [Optional] (XPath PCOShipmentReport/invoiceInfo/invoiceInfoItem/refDoc/docDate/@dateForm) [Optional] (XPath PCOShipmentReport/PCOshipInfo/sadRef/docDate/@dateForm) [Optional] (XPath PCOShipmentReport/invoiceInfo/msgDate/@dateForm) [Optional]</p>

	(XPath PCOShipmentReport/invoiceInfo/invoiceInfoItem/productOrigin/refDoc/docDate/@dateForm) [Optional]
dept	<p>name or code of a department</p> <p>- base type: string, max length: 40,</p> <p>(XPath PCOShipmentReport/PCOshipInfo/representative/dept) 0-1 (XPath PCOShipmentReport/PCOshipInfo/consignee/dept) 0-1 (XPath PCOShipmentReport/PCOshipInfo/buyer/dept) 0-1 (XPath PCOShipmentReport/PCOshipInfo/trade/tradeLocation/dept) 0-1 (XPath PCOShipmentReport/SRVheader/senderParty/dept) 0-1 (XPath PCOShipmentReport/PCOshipInfo/accountingSupplier/dept) 0-1 (XPath PCOShipmentReport/PCOshipInfo/exporter/dept) 0-1 (XPath PCOShipmentReport/SRVheader/receiverParty/dept) 0-1</p>
description	<p>free text description. The content of the element must be unique, it might be translated and repeated into more languages (thus no more than one instance for each language).</p> <p>- base type: string, max length: 250,</p> <p>(XPath PCOShipmentReport/invoiceInfo/invoiceInfoItem/description) 0-9</p> <p>- note: <i>Only one instance of this element for each different value of 'ln' attribute (language)</i></p> <p>(XPath PCOShipmentReport/PCOshipInfo/transportRouteInfo/customsTransportMeansInfo/description) 0-1 (XPath PCOShipmentReport/PCOshipInfo/bondedWarehouse/description) 0-1</p>
docDate	<p>date of issue of the referenced document, according to one of the patterns YYYY-MM-DD, YYYY-MM-DD:HH-MM or YYYY-WW.</p> <p>- base type: string,</p> <p>(XPath PCOShipmentReport/invoiceInfo/invoiceInfoItem/refDoc/docDate) 0-1 (XPath PCOShipmentReport/PCOshipInfo/sadRef/docDate) 0-1</p> <p>- note: <i>Date of submission of the SAD to customs office</i></p> <p>(XPath PCOShipmentReport/invoiceInfo/refDoc/docDate) 0-1 (XPath PCOShipmentReport/invoiceInfo/invoiceInfoItem/productOrigin/refDoc/docDate) 0-1</p>
docID	<p>identification number of the referenced document</p> <p>- base type: string, max length: 80,</p> <p>(XPath PCOShipmentReport/invoiceInfo/invoiceInfoItem/productOrigin/refDoc/docID) 1-2 Best Practice (XPath PCOShipmentReport/invoiceInfo/refDoc/docID) 1-2 Best Practice (XPath PCOShipmentReport/PCOshipInfo/sadRef/docID) 0-1</p> <p>- note: <i>Internal identifier of the SAD</i></p> <p>(XPath PCOShipmentReport/invoiceInfo/invoiceInfoItem/refDoc/docID) 1-2 Best Practice</p>
@docType	<p>type or class to which the referenced document belongs</p> <p>- base type: string, cod. table: T21</p> <p>http://www.ebiz.enea.it/moda-ml/repository/codelist/draft/gc_T21.xml</p> <p>(XPath PCOShipmentReport/invoiceInfo/invoiceInfoItem/productOrigin/refDoc/@docType) [Required] (XPath PCOShipmentReport/invoiceInfo/refDoc/@docType) [Required] (XPath PCOShipmentReport/invoiceInfo/invoiceInfoItem/refDoc/@docType) [Required]</p>
@email	<p>electronic mail address of the contact person within a Party</p> <p>- base type: string, max length: 250,</p> <p>(XPath PCOShipmentReport/SRVheader/senderParty/person/@email) [Optional] (XPath PCOShipmentReport/SRVheader/receiverParty/person/@email) [Optional] (XPath PCOShipmentReport/PCOshipInfo/consignee/person/@email) [Optional] (XPath PCOShipmentReport/PCOshipInfo/accountingSupplier/person/@email) [Optional] (XPath PCOShipmentReport/PCOshipInfo/buyer/person/@email) [Optional] (XPath PCOShipmentReport/PCOshipInfo/exporter/person/@email) [Optional] (XPath PCOShipmentReport/PCOshipInfo/representative/person/@email) [Optional] (XPath PCOShipmentReport/PCOshipInfo/trade/tradeLocation/person/@email) [Optional]</p>
@encoding	<p>specifies the decoding algorithm of the binary object</p> <p>- base type: normalizedString,</p> <p>(XPath PCOShipmentReport/invoiceInfo/invoiceInfoItem/productOrigin/refDoc/attachment/binaryObject/@encoding) [Optional]</p>

	<p>(XPath PCOShipmentReport/invoiceInfo/refDoc/attachment/binaryObject/@encoding) [Optional]</p> <p>(XPath PCOShipmentReport/invoiceInfo/attachment/binaryObject/@encoding) [Optional]</p> <p>(XPath PCOShipmentReport/invoiceInfo/invoiceInfo/attachment/refDoc/attachment/binaryObject/@encoding) [Optional]</p> <p>(XPath PCOShipmentReport/PCOshipInfo/sadRef/attachment/binaryObject/@encoding) [Optional]</p> <p>(XPath PCOShipmentReport/PCOshipInfo/eadRef/attachment/binaryObject/@encoding) [Optional]</p>
encodingCode	<p>the encoding/decoding algorithm used with the external object (example is 'base64Binary')</p> <p>- base type: normalizedString,</p> <p>(XPath PCOShipmentReport/PCOshipInfo/sadRef/attachment/externalReference/encodingCode) 0-1</p> <p>(XPath PCOShipmentReport/invoiceInfo/refDoc/attachment/externalReference/encodingCode) 0-1</p> <p>(XPath PCOShipmentReport/invoiceInfo/invoiceInfo/attachment/refDoc/attachment/externalReference/encodingCode) 0-1</p> <p>(XPath PCOShipmentReport/invoiceInfo/attachment/externalReference/encodingCode) 0-1</p> <p>(XPath PCOShipmentReport/PCOshipInfo/eadRef/attachment/externalReference/encodingCode) 0-1</p> <p>(XPath PCOShipmentReport/invoiceInfo/invoiceInfo/productOrigin/refDoc/attachment/externalReference/encodingCode) 0-1</p>
ESDId	<p>Identifier shipping dossier associated to the customs declaration</p> <p>- base type: string,</p> <p>(XPath PCOShipmentReport/PCOshipInfo/ESDId) 0-1</p>
@fax	<p>fax number of the contact person within a Party</p> <p>- base type: string, max length: 35,</p> <p>(XPath PCOShipmentReport/SRVheader/senderParty/person/@fax) [Optional]</p> <p>(XPath PCOShipmentReport/PCOshipInfo/exporter/person/@fax) [Optional]</p> <p>(XPath PCOShipmentReport/SRVheader/receiverParty/person/@fax) [Optional]</p> <p>(XPath PCOShipmentReport/PCOshipInfo/accountingSupplier/person/@fax) [Optional]</p> <p>(XPath PCOShipmentReport/PCOshipInfo/representative/person/@fax) [Optional]</p> <p>(XPath PCOShipmentReport/PCOshipInfo/buyer/person/@fax) [Optional]</p> <p>(XPath PCOShipmentReport/PCOshipInfo/consignee/person/@fax) [Optional]</p> <p>(XPath PCOShipmentReport/PCOshipInfo/trade/tradeLocation/person/@fax) [Optional]</p>
fileName	<p>unique identifier (name) of the file</p> <p>- base type: string, max length: 255,</p> <p>(XPath PCOShipmentReport/invoiceInfo/refDoc/attachment/fileName) 0-1</p> <p>(XPath PCOShipmentReport/invoiceInfo/invoiceInfo/productOrigin/refDoc/attachment/fileName) 0-1</p> <p>(XPath PCOShipmentReport/PCOshipInfo/eadRef/attachment/fileName) 0-1</p> <p>(XPath PCOShipmentReport/invoiceInfo/attachment/fileName) 0-1</p> <p>(XPath PCOShipmentReport/invoiceInfo/invoiceInfo/refDoc/attachment/fileName) 0-1</p> <p>(XPath PCOShipmentReport/PCOshipInfo/sadRef/attachment/fileName) 0-1</p>
@format	<p>the format of the binary content (examples xml, pdf, doc,...)</p> <p>- base type: string,</p> <p>(XPath PCOShipmentReport/invoiceInfo/attachment/binaryObject/@format) [Optional]</p> <p>(XPath PCOShipmentReport/PCOshipInfo/eadRef/attachment/binaryObject/@format) [Optional]</p> <p>(XPath PCOShipmentReport/invoiceInfo/invoiceInfo/productOrigin/refDoc/attachment/binaryObject/@format) [Optional]</p> <p>(XPath PCOShipmentReport/PCOshipInfo/sadRef/attachment/binaryObject/@format) [Optional]</p> <p>(XPath PCOShipmentReport/invoiceInfo/refDoc/attachment/binaryObject/@format) [Optional]</p> <p>(XPath PCOShipmentReport/invoiceInfo/invoiceInfo/refDoc/attachment/binaryObject/@format) [Optional]</p>
formatCode	<p>the format of the external object (examples xml, pdf, doc,...)</p> <p>- base type: normalizedString,</p>

	<p>(XPath PCOShipmentReport/invoiceInfo/attachment/externalReference/formatCode) 0-1</p> <p>(XPath PCOShipmentReport/invoiceInfo/refDoc/attachment/externalReference/formatCode) 0-1</p> <p>(XPath PCOShipmentReport/invoiceInfo/invoiceInfo/attachment/externalReference/formatCode) 0-1</p> <p>(XPath PCOShipmentReport/invoiceInfo/invoiceInfo/productOrigin/refDoc/attachment/externalReference/formatCode) 0-1</p> <p>(XPath PCOShipmentReport/PCOshipInfo/eadRef/attachment/externalReference/formatCode) 0-1</p> <p>(XPath PCOShipmentReport/PCOshipInfo/sadRef/attachment/externalReference/formatCode) 0-1</p>
@geoRefSystem	<p>georeference system adopted for the coordinate (in example wgs84 with decimal degree or degree with minute and seconds)</p> <p>- base type: string,</p> <p>(XPath PCOShipmentReport/PCOshipInfo/buyer/geoCoordinates/@geoRefSystem) [Optional]</p> <p>(XPath PCOShipmentReport/PCOshipInfo/accountingSupplier/geoCoordinates/@geoRefSystem) [Optional]</p> <p>(XPath PCOShipmentReport/PCOshipInfo/consignee/geoCoordinates/@geoRefSystem) [Optional]</p> <p>(XPath PCOShipmentReport/SRVheader/senderParty/geoCoordinates/@geoRefSystem) [Optional]</p> <p>(XPath PCOShipmentReport/PCOshipInfo/representative/geoCoordinates/@geoRefSystem) [Optional]</p> <p>(XPath PCOShipmentReport/PCOshipInfo/trade/tradeLocation/geoCoordinates/@geoRefSystem) [Optional]</p> <p>(XPath PCOShipmentReport/SRVheader/receiverParty/geoCoordinates/@geoRefSystem) [Optional]</p> <p>(XPath PCOShipmentReport/PCOshipInfo/exporter/geoCoordinates/@geoRefSystem) [Optional]</p>
grossWeight	<p>the gross weight, declared for transport or customs purpose</p> <p>- base type: decimal, min inclusive: 0, fraction digits: 2,</p> <p>(XPath PCOShipmentReport/PCOshipInfo/grossWeight) 0-1</p>
hashFootprint	<p>footprint obtained by applying an hashing algorithm</p> <p>- base type: string, max length: 80,</p> <p>(XPath PCOShipmentReport/invoiceInfo/invoiceInfo/refDoc/attachment/hashFootprint) 0-1</p> <p>(XPath PCOShipmentReport/PCOshipInfo/eadRef/attachment/hashFootprint) 0-1</p> <p>(XPath PCOShipmentReport/invoiceInfo/attachment/hashFootprint) 0-1</p> <p>(XPath PCOShipmentReport/invoiceInfo/refDoc/attachment/hashFootprint) 0-1</p> <p>(XPath PCOShipmentReport/PCOshipInfo/sadRef/attachment/hashFootprint) 0-1</p> <p>(XPath PCOShipmentReport/invoiceInfo/invoiceInfo/productOrigin/refDoc/attachment/hashFootprint) 0-1</p>
@hashMethod	<p>type of used hashing algorithm</p> <p>- base type: string, max length: 80, cod. table: NT333</p> <p>http://www.ebiz.enea.it/moda-ml/repository/codelist/draft/gc_NT333.xml</p> <p>(XPath PCOShipmentReport/invoiceInfo/attachment/hashFootprint/@hashMethod) [Required]</p> <p>(XPath PCOShipmentReport/PCOshipInfo/eadRef/attachment/hashFootprint/@hashMethod) [Required]</p> <p>(XPath PCOShipmentReport/PCOshipInfo/sadRef/attachment/hashFootprint/@hashMethod) [Required]</p> <p>(XPath PCOShipmentReport/invoiceInfo/invoiceInfo/productOrigin/refDoc/attachment/hashFootprint/@hashMethod) [Required]</p> <p>(XPath PCOShipmentReport/invoiceInfo/invoiceInfo/refDoc/attachment/hashFootprint/@hashMethod) [Required]</p> <p>(XPath PCOShipmentReport/invoiceInfo/refDoc/attachment/hashFootprint/@hashMethod) [Required]</p>
id	<p>primary identification code of a Party; it is recommended to use an EORI number (with @numberingOrg= "EO") or the format: nation code (ISO 3166) + national tax code (i.e. VAT identification number) with @numberingOrg= "MF"</p> <p>- base type: string, max length: 15,</p> <p>(XPath PCOShipmentReport/PCOshipInfo/buyer/id) 1-1</p> <p>(XPath PCOShipmentReport/PCOshipInfo/accountingSupplier/id) 1-1</p> <p>- note: Use EORI as identifier (numberingOrg='EO')</p> <p>(XPath PCOShipmentReport/SRVheader/senderParty/id) 1-1</p>

	<p>(XPath PCOShipmentReport/SRVheader/receiverParty/id) 1-1 (XPath PCOShipmentReport/PCOshipInfo/representative/id) 1-1 - note: Fiscal code or VAT number (numberingOrg='MF') or the identifier of the exporter registered in national customs brokers registry (numberingOrg='CBR'), preceded by the code of the issuing country. (XPath PCOShipmentReport/PCOshipInfo/exporter/id) 1-1 - note: Use EORI as identifier (numberingOrg='EO') (XPath PCOShipmentReport/PCOshipInfo/consignee/id) 0-1</p>
@idQualifier	<p>Qualification of the identifier. - base type: string, (XPath PCOShipmentReport/PCOshipInfo/buyer/additionalIdentifier/@idQualifier) [Optional] - nota: this attribute should be used when the numberingOrg attribute is not enough to declare the type of identifier (XPath PCOShipmentReport/PCOshipInfo/accountingSupplier/additionalIdentifier/@idQualifier) [Optional] - nota: this attribute should be used when the numberingOrg attribute is not enough to declare the type of identifier (XPath PCOShipmentReport/PCOshipInfo/exporter/additionalIdentifier/@idQualifier) [Optional] - nota: this attribute should be used when the numberingOrg attribute is not enough to declare the type of identifier</p>
incoTerm	<p>specification of the terms of trade (INCOTERMS) - base type: string, cod. table: T3 http://www.ebiz.enea.it/moda-ml/repository/codelist/draft/gc_T3.xml (XPath PCOShipmentReport/PCOshipInfo/trade/incoTerm) 1-1</p>
incoTermText	<p>free text specifying the terms of trade (incoterm, location) - base type: string, max length: 250, (XPath PCOShipmentReport/PCOshipInfo/trade/incoTermText) 1-1</p>
@isURL	<p>it indicates if the referred element is an URL (true) or not (false) - base type: boolean, (XPath PCOShipmentReport/invoiceInfo/invoiceInfoItem/refDoc/attachment/externalReference/uri/@isURL) [Optional] [Default= true] - nota: usage of URLs is recommended (XPath PCOShipmentReport/PCOshipInfo/eadRef/attachment/externalReference/uri/@isURL) [Optional] [Default= true] - nota: usage of URLs is recommended (XPath PCOShipmentReport/invoiceInfo/invoiceInfoItem/refDoc/attachment/blockChainReference/uri/@isURL) [Optional] [Default= true] - nota: usage of URLs is recommended (XPath PCOShipmentReport/PCOshipInfo/sadRef/attachment/externalReference/uri/@isURL) [Optional] [Default= true] - nota: usage of URLs is recommended (XPath PCOShipmentReport/invoiceInfo/refDoc/attachment/blockChainReference/uri/@isURL) [Optional] [Default= true] - nota: usage of URLs is recommended (XPath PCOShipmentReport/invoiceInfo/refDoc/attachment/externalReference/uri/@isURL) [Optional] [Default= true] - nota: usage of URLs is recommended (XPath PCOShipmentReport/invoiceInfo/attachment/externalReference/uri/@isURL) [Optional] [Default= true] - nota: usage of URLs is recommended (XPath PCOShipmentReport/PCOshipInfo/eadRef/attachment/blockChainReference/uri/@isURL) [Optional] [Default= true] - nota: usage of URLs is recommended (XPath PCOShipmentReport/PCOshipInfo/sadRef/attachment/blockChainReference/uri/@isURL) [Optional] [Default= true] - nota: usage of URLs is recommended (XPath PCOShipmentReport/invoiceInfo/invoiceInfoItem/productOrigin/refDoc/attachment/blockChainReference/uri/@isURL) [Optional] [Default= true] - nota: usage of URLs is recommended (XPath PCOShipmentReport/invoiceInfo/attachment/blockChainReference/uri/@isURL) [Optional] [Default= true] - nota: usage of URLs is recommended</p>

	<p>(XPath PCOShipmentReport/invoiceInfo/invoiceInfoItem/productOrigin/refDoc/attachment/externalReference/uri/@isURL) [Optional] [Default=true]</p> <p>- nota: usage of URLs is recommended</p>
itemID	<p>number of the line/item of the referenced document</p> <p>- base type: string, max length: 40,</p> <p>(XPath PCOShipmentReport/invoiceInfo/invoiceInfoItem/itemID) 1-1 Best Practice</p> <p>- note: Here the order whose originated the invoice line can be identified</p> <p>(XPath PCOShipmentReport/invoiceInfo/invoiceInfoItem/productOrigin/refDoc/itemID) 0-1</p> <p>(XPath PCOShipmentReport/invoiceInfo/invoiceInfoItem/refDoc/itemID) 0-1</p> <p>(XPath PCOShipmentReport/invoiceInfo/refDoc/itemID) 0-1</p>
legalName	<p>legal name</p> <p>- base type: string, max length: 250,</p> <p>(XPath PCOShipmentReport/PCOShipInfo/exporter/legalName) 0-1</p> <p>(XPath PCOShipmentReport/PCOShipInfo/accountingSupplier/legalName) 0-1</p> <p>(XPath PCOShipmentReport/PCOShipInfo/trade/tradeLocation/legalName) 0-1</p> <p>(XPath PCOShipmentReport/SRVheader/receiverParty/legalName) 0-1</p> <p>(XPath PCOShipmentReport/PCOShipInfo/buyer/legalName) 0-1</p> <p>(XPath PCOShipmentReport/PCOShipInfo/representative/legalName) 0-1</p> <p>(XPath PCOShipmentReport/SRVheader/senderParty/legalName) 0-1</p> <p>(XPath PCOShipmentReport/PCOShipInfo/consignee/legalName) 0-1</p>
@listName	<p>the name of the list of codes used to make an instance of the element (it might be thought as descriptive element, i.e. 'fabric printing technologies', or not, i.e. "T264")</p> <p>- base type: string, max length: 40,</p> <p>(XPath PCOShipmentReport/invoiceInfo/invoiceInfoItem/refDoc/season/@listName) [Optional]</p> <p>- nota: this attribute should always be used coupled with "numberingOrg"</p> <p>(XPath PCOShipmentReport/invoiceInfo/refDoc/season/@listName) [Optional]</p> <p>- nota: this attribute should always be used coupled with "numberingOrg"</p> <p>(XPath PCOShipmentReport/invoiceInfo/invoiceInfoItem/productOrigin/refDoc/season/@listName) [Optional]</p> <p>- nota: this attribute should always be used coupled with "numberingOrg"</p>
@listVersion	<p>it specifies the version of the list of codes used to make an instance of the element</p> <p>- base type: string, max length: 6,</p> <p>(XPath PCOShipmentReport/invoiceInfo/refDoc/season/@listVersion) [Optional]</p> <p>- nota: this attribute should always be used coupled with "numberingOrg" and "listName"</p> <p>(XPath PCOShipmentReport/invoiceInfo/invoiceInfoItem/refDoc/season/@listVersion) [Optional]</p> <p>- nota: this attribute should always be used coupled with "numberingOrg" and "listName"</p> <p>(XPath PCOShipmentReport/invoiceInfo/invoiceInfoItem/productOrigin/refDoc/season/@listVersion) [Optional]</p> <p>- nota: this attribute should always be used coupled with "numberingOrg" and "listName"</p>
@ln	<p>Language code.</p> <p>- base type: string, cod. table: NT60</p> <p>http://www.ebiz.enea.it/moda-ml/repository/codelist/draft/gc_NT60.xml</p> <p>(XPath PCOShipmentReport/PCOShipInfo/bondedWarehouse/description/@ln) [Optional]</p> <p>(XPath PCOShipmentReport/PCOShipInfo/transportRouteInfo/customsTransportMeansInfo/description/@ln) [Optional]</p> <p>(XPath PCOShipmentReport/invoiceInfo/invoiceInfoItem/description/@ln) [Optional]</p>
location	<p>specification of a location. It can be represented by an identification code (preferable) or a short text (not recommended). For example a GLN code that requires to assign the value "GLN" to the attribute @LRI.</p> <p>- base type: string, max length: 128,</p> <p>(XPath PCOShipmentReport/PCOShipInfo/trade/location) 0-1</p> <p>- note: code number of the place to which the INCOTERM applies</p> <p>(XPath PCOShipmentReport/PCOShipInfo/trade/tradeLocation/location) 0-1</p> <p>- note: Use this element to specify a numeric ID of the location, for example a GLN code (in this case @SchemeID='LRI='GLN')</p> <p>(XPath PCOShipmentReport/PCOShipInfo/bondedWarehouse/location) 1-1</p>

	- note: Code identifying the place and which is released by the customs agency upon exporter requested (@LRI = 'NCA')
@logo	company logo (URL of the image jpeg or gif). It is recommended that the width of the image does not exceed 640 pixel. - base type: string, max length: 255, (XPath PCOShipmentReport/PCOshipInfo/buyer/@logo) [Optional]
@LRI	issuer of the identifier (or identification system) of a location. - base type: string, cod. table: NT3 http://www.ebiz.enea.it/moda-ml/repository/codelist/draft/gc_NT3.xml (XPath PCOShipmentReport/PCOshipInfo/trade/location/@LRI) [Optional] (XPath PCOShipmentReport/PCOshipInfo/trade/tradeLocation/location/@LRI) [Optional] (XPath PCOShipmentReport/PCOshipInfo/bondedWarehouse/location/@LRI) [Optional]
made	specifies the country where the product has been manufactured - base type: string, cod. table: T10 http://www.ebiz.enea.it/moda-ml/repository/codelist/draft/gc_T10.xml (XPath PCOShipmentReport/invoiceInfo/invoiceInfoItem/productOrigin/made) 1-1
@mime	the mime type of the binary object - base type: normalizedString, (XPath PCOShipmentReport/invoiceInfo/refDoc/attachment/binaryObject/@mime) [Optional] (XPath PCOShipmentReport/invoiceInfo/attachment/binaryObject/@mime) [Optional] (XPath PCOShipmentReport/PCOshipInfo/eadRef/attachment/binaryObject/@mime) [Optional] (XPath PCOShipmentReport/invoiceInfo/invoiceInfoItem/productOrigin/refDoc/attachment/binaryObject/@mime) [Optional] (XPath PCOShipmentReport/invoiceInfo/invoiceInfoItem/refDoc/attachment/binaryObject/@mime) [Optional] (XPath PCOShipmentReport/PCOshipInfo/sadRef/attachment/binaryObject/@mime) [Optional]
mimeCode	mime type of the external object - base type: normalizedString, (XPath PCOShipmentReport/invoiceInfo/invoiceInfoItem/productOrigin/refDoc/attachment/externalReference/mimeCode) 0-1 Best Practice (XPath PCOShipmentReport/invoiceInfo/invoiceInfoItem/refDoc/attachment/externalReference/mimeCode) 0-1 Best Practice (XPath PCOShipmentReport/invoiceInfo/attachment/externalReference/mimeCode) 0-1 Best Practice (XPath PCOShipmentReport/PCOshipInfo/eadRef/attachment/externalReference/mimeCode) 0-1 Best Practice (XPath PCOShipmentReport/invoiceInfo/refDoc/attachment/externalReference/mimeCode) 0-1 Best Practice (XPath PCOShipmentReport/PCOshipInfo/sadRef/attachment/externalReference/mimeCode) 0-1 Best Practice
MRN	Movement reference number (MRN) assigned by the custom authorities to the custom declaration. - base type: string, (XPath PCOShipmentReport/PCOshipInfo/MRN) 0-1
msgAmount	total monetary amount of the message - base type: decimal, min inclusive: 0, fraction digits: 2, (XPath PCOShipmentReport/invoiceInfo/msgAmount) 1-1
msgCurrency	currency used to express the monetary amounts of the message - base type: string, cod. table: T9 http://www.ebiz.enea.it/moda-ml/repository/codelist/draft/gc_T9.xml (XPath PCOShipmentReport/invoiceInfo/msgCurrency) 0-1 - note: Currency used in the invoice
msgDate	date of issue of the present message (xml document), according to one of the patterns YYYY-MM-DD, YYYY-MM-DD:HH-MM or YYYY-WW. - base type: string, (XPath PCOShipmentReport/SRVheader/msgDate) 0-1

	(XPath PCOShipmentReport/invoiceInfo/msgDate) 1-1 - note: <i>Invoice issue date</i>
msgID	key identifier of the business document in the information system of the issuing Party. In case of more despatches of the same business document, it is unchanged. - base type: string, max length: 35, (XPath PCOShipmentReport/SRVheader/msgID) 0-1 (XPath PCOShipmentReport/invoiceInfo/msgID) 1-1 - note: <i>Invoice identifier</i>
natureOfTransaction	Nature of the business transaction (e.g. indicated on the customs declaration). - base type: string, cod. table: NT331 http://www.ebiz.enea.it/moda-ml/repository/codelist/draft/gc_NT331.xml (XPath PCOShipmentReport/invoiceInfo/natureOfTransaction) 1-1
netWeight	the net weight declared for transport or customs purpose - base type: decimal, min inclusive: 0, fraction digits: 2, (XPath PCOShipmentReport/PCOshipInfo/netWeight) 0-1 (XPath PCOShipmentReport/invoiceInfo/invoiceInfoItem/netWeight) 0-1 - note: <i>Provide the weight in kilograms (attribute um='KGM')</i>
note	free text or structured (computer processing) note. For note structuring use the attributes "noteLabel" and "codelist" - base type: string, max length: 350, (XPath PCOShipmentReport/note) 0-9
@noteLabel	subject qualifier of a note - base type: string, max length: 35, (XPath PCOShipmentReport/note/@noteLabel) [Optional] - note: <i>must be used to qualify the subject of the note</i>
@numberingOrg	code specifying the organisation who has created or owns the coding or numbering system - base type: string, cod. table: NT6 http://www.ebiz.enea.it/moda-ml/repository/codelist/draft/gc_NT6.xml (XPath PCOShipmentReport/note/@numberingOrg) [Optional] - note: <i>must be used to specify the organization that created the list of codes used in "noteLabel"</i> (XPath PCOShipmentReport/SRVheader/receiverParty/id/@numberingOrg) [Optional] (XPath PCOShipmentReport/PCOshipInfo/buyer/id/@numberingOrg) [Optional] (XPath PCOShipmentReport/invoiceInfo/invoiceInfoItem/refDoc/attachment/fileName/@numberingOrg) [Optional] (XPath PCOShipmentReport/invoiceInfo/refDoc/docID/@numberingOrg) [Optional] - note: <i>here can be specified whose document numbering is used (e.g.: Client, Supplier, ...)</i> (XPath PCOShipmentReport/PCOshipInfo/representative/id/@numberingOrg) [Optional] (XPath PCOShipmentReport/invoiceInfo/invoiceInfoItem/productOrigin/refDoc/attachment/fileName/@numberingOrg) [Optional] (XPath PCOShipmentReport/SRVheader/senderParty/id/@numberingOrg) [Optional] (XPath PCOShipmentReport/PCOshipInfo/accountingSupplier/additionalIdentifier/@numberingOrg) [Optional] - note: <i>here the issuer of the identifier must be specified</i> (XPath PCOShipmentReport/PCOshipInfo/accountingSupplier/id/@numberingOrg) [Optional] (XPath PCOShipmentReport/invoiceInfo/invoiceInfoItem/productOrigin/refDoc/season/@numberingOrg) [Optional] - note: <i>this attribute should be used either single or coupled with "listName" and "listVersion"</i> (XPath PCOShipmentReport/invoiceInfo/refDoc/season/@numberingOrg) [Optional] - note: <i>this attribute should be used either single or coupled with "listName" and "listVersion"</i> (XPath PCOShipmentReport/invoiceInfo/refDoc/attachment/fileName/@numberingOrg) [Optional] (XPath PCOShipmentReport/invoiceInfo/invoiceInfoItem/refDoc/docID/@numberingOrg) [Optional] - note: <i>here can be specified whose document numbering is used (e.g.: Client, Supplier, ...)</i> (XPath PCOShipmentReport/PCOshipInfo/eadRef/attachment/fileName/@numberingOrg) [Optional] (XPath PCOShipmentReport/PCOshipInfo/consignee/id/@numberingOrg) [Optional] (XPath PCOShipmentReport/PCOshipInfo/sadRef/attachment/fileName/@numberingOrg) [Optional]

	<p>(XPath PCOShipmentReport/invoiceInfo/invoiceInfoItem/productOrigin/refDoc/docID/@numberingOrg) [Optional]</p> <p>- nota: here can be specified whose document numbering is used (e.g.: Client, Supplier, ..)</p> <p>(XPath PCOShipmentReport/PCOshipInfo/packageN/@numberingOrg) [Optional]</p> <p>(XPath PCOShipmentReport/PCOshipInfo/buyer/additionalIdentifier/@numberingOrg) [Optional]</p> <p>- nota: here the issuer of the identifier must be specified</p> <p>(XPath PCOShipmentReport/invoiceInfo/invoiceInfoItem/refDoc/season/@numberingOrg) [Optional]</p> <p>- nota: this attribute should be used either single or coupled with "listName" and "listVersion"</p> <p>(XPath PCOShipmentReport/PCOshipInfo/exporter/additionalIdentifier/@numberingOrg) [Optional]</p> <p>- nota: here the issuer of the identifier must be specified</p> <p>(XPath PCOShipmentReport/PCOshipInfo/exporter/id/@numberingOrg) [Optional]</p> <p>(XPath PCOShipmentReport/PCOshipInfo/sadRef/docID/@numberingOrg) [Optional]</p> <p>- nota: here can be specified whose document numbering is used (e.g.: Client, Supplier, ..)</p> <p>(XPath PCOShipmentReport/invoiceInfo/attachment/fileName/@numberingOrg) [Optional]</p>
objectID	<p>Object identifier</p> <p>- base type: string,</p> <p>(XPath PCOShipmentReport/PCOshipInfo/tracedObject/objectInstanceIdentification/objectID) 1-9</p> <p>- note: multiple values of objectID are allowed for different representations of the same object that must differ for the value of schemeID. In traceability transactions there must be at least the UNIQUE code assigned by the platform (e.g. TRN)</p> <p>(XPath PCOShipmentReport/invoiceInfo/invoiceInfoItem/tracedObject/objectInstanceIdentification/objectID) 1-9</p> <p>- note: multiple values of objectID are allowed for different representations of the same object that must differ for the value of schemeID. In traceability transactions there must be at least the UNIQUE code assigned by the platform (e.g. TRN)</p>
@objectInstanceTypeCode	<p>code that identifies the type of object instance</p> <p>- base type: string, cod. table: NT202</p> <p>http://www.ebiz.enea.it/moda-ml/repository/codelist/draft/gc_NT202.xml</p> <p>(XPath PCOShipmentReport/invoiceInfo/invoiceInfoItem/tracedObject/@objectInstanceTypeCode) [Required]</p> <p>(XPath PCOShipmentReport/PCOshipInfo/tracedObject/@objectInstanceTypeCode) [Required]</p> <p>(XPath PCOShipmentReport/invoiceInfo/invoiceInfoItem/tracedObject/objectInstanceIdentification/@objectInstanceTypeCode) [Required]</p> <p>(XPath PCOShipmentReport/PCOshipInfo/tracedObject/objectInstanceIdentification/@objectInstanceTypeCode) [Required]</p>
objectTypeCode	<p>code that identifies the type of object</p> <p>- base type: string, cod. table: T302</p> <p>http://www.ebiz.enea.it/moda-ml/repository/codelist/draft/gc_T302.xml</p> <p>(XPath PCOShipmentReport/PCOshipInfo/tracedObject/objectTypeCode) 1-1</p> <p>(XPath PCOShipmentReport/invoiceInfo/invoiceInfoItem/tracedObject/objectTypeCode) 1-1</p>
@packageContainerN	<p>reference usable to indicate the outer package containing this package</p> <p>- base type: string, max length: 40,</p> <p>(XPath PCOShipmentReport/PCOshipInfo/packageN/@packageContainerN) [Optional]</p>
packageN	<p>serial number used to identify a transport package</p> <p>- base type: string, max length: 40,</p> <p>(XPath PCOShipmentReport/PCOshipInfo/packageN) 0-unbounded</p>
packageQty	<p>quantity of the specified transport packages</p> <p>- base type: positiveInteger,</p> <p>(XPath PCOShipmentReport/PCOshipInfo/packageQty) 1-1</p>
PCOID	<p>Identifier of the preferential origin certificate (PCO).</p> <p>- base type: string,</p> <p>(XPath PCOShipmentReport/PCOshipInfo/PCOID) 0-1</p>
person	<p>name of a person (e.g. contact person within an organization)</p>

	<p>- base type: string, max length: 40, (XPath PCOShipmentReport/PCOshipInfo/buyer/person) 0-1 (XPath PCOShipmentReport/SRVheader/receiverParty/person) 0-1 (XPath PCOShipmentReport/PCOshipInfo/exporter/person) 0-1 (XPath PCOShipmentReport/PCOshipInfo/accountingSupplier/person) 0-1 (XPath PCOShipmentReport/PCOshipInfo/consignee/person) 0-1 (XPath PCOShipmentReport/SRVheader/senderParty/person) 0-1 (XPath PCOShipmentReport/PCOshipInfo/representative/person) 0-1 (XPath PCOShipmentReport/PCOshipInfo/trade/tradeLocation/person) 0-1</p>
@phone	<p>phone number of the contact person within a Party - base type: string, max length: 35, (XPath PCOShipmentReport/PCOshipInfo/trade/tradeLocation/person/@phone) [Optional] (XPath PCOShipmentReport/SRVheader/receiverParty/person/@phone) [Optional] (XPath PCOShipmentReport/PCOshipInfo/exporter/person/@phone) [Optional] (XPath PCOShipmentReport/PCOshipInfo/representative/person/@phone) [Optional] (XPath PCOShipmentReport/PCOshipInfo/consignee/person/@phone) [Optional] (XPath PCOShipmentReport/SRVheader/senderParty/person/@phone) [Optional] (XPath PCOShipmentReport/PCOshipInfo/accountingSupplier/person/@phone) [Optional] (XPath PCOShipmentReport/PCOshipInfo/buyer/person/@phone) [Optional]</p>
platformServiceCode	<p>code of the available service - base type: string, cod. table: TRK01 http://www.ebiz.enea.it/moda-ml/repository/codelist/draft/gc_TRK01.xml (XPath PCOShipmentReport/SRVheader/platformServiceReference/platformServiceCode) 1-1</p>
postCode	<p>code defining the postal zone - base type: string, max length: 10, (XPath PCOShipmentReport/SRVheader/senderParty/postCode) 0-1 (XPath PCOShipmentReport/PCOshipInfo/consignee/postCode) 0-1 (XPath PCOShipmentReport/PCOshipInfo/trade/tradeLocation/postCode) 0-1 (XPath PCOShipmentReport/SRVheader/receiverParty/postCode) 0-1 (XPath PCOShipmentReport/PCOshipInfo/buyer/postCode) 0-1 (XPath PCOShipmentReport/PCOshipInfo/accountingSupplier/postCode) 0-1 (XPath PCOShipmentReport/PCOshipInfo/exporter/postCode) 0-1 (XPath PCOShipmentReport/PCOshipInfo/representative/postCode) 0-1</p>
price	<p>unit price of the article, object or service specified - base type: decimal, min inclusive: 0, fraction digits: 4, (XPath PCOShipmentReport/invoiceInfo/invoiceInfoItem/price) 1-1</p>
@priceQualifier	<p>type of price with reference to discount and taxes - base type: string, cod. table: NT20 http://www.ebiz.enea.it/moda-ml/repository/codelist/draft/gc_NT20.xml (XPath PCOShipmentReport/invoiceInfo/invoiceInfoItem/price/@priceQualifier) [Optional] [Default= NET]</p>
qty	<p>net quantity of the article or object correlated, qualified by the function of the document (ordering, delivering, ..) and by the context - base type: decimal, min inclusive: 0, fraction digits: 2, (XPath PCOShipmentReport/PCOshipInfo/tracedObject/productIDandQty/qty) 0-2 - note: quantity of the product, identified by uniqueProductID. This element can have two instances only if the units of measure are different. (XPath PCOShipmentReport/invoiceInfo/invoiceInfoItem/tracedObject/productIDandQty/qty) 0-2 - note: quantity of the product, identified by uniqueProductID. This element can have two instances only if the units of measure are different. (XPath PCOShipmentReport/invoiceInfo/invoiceInfoItem/qty) 1-2 - note: This element can have two instances only if the units of measure are different</p>
@role	<p>Third Party role qualifier - base type: string, cod. table: NT2 http://www.ebiz.enea.it/moda-ml/repository/codelist/draft/gc_NT2.xml (XPath PCOShipmentReport/SRVheader/senderParty/@role) [Optional] - nota: The use of this attribute is mandatory when the element to which it is associated has TRCHeader as its parent. (XPath PCOShipmentReport/SRVheader/receiverParty/@role) [Optional]</p>

	<p>- nota: <i>The use of this attribute is mandatory when the element to which it is associated has TRCHeader as its parent.</i></p>
@schemeID	<p>identifier of an identification scheme</p> <ul style="list-style-type: none"> - base type: string, (XPath PCOShipmentReport/invoiceInfo/invoiceInfo/attachment/hashFootprint/@schemeID) [Optional] - nota: <i>specify for which system this hash footprint might be used as identifier (for example HDFS system..)</i> (XPath PCOShipmentReport/invoiceInfo/invoiceInfo/customsStat/@schemeID) [Optional] [Default= TARIC] - nota: <i>By default the value is TARIC, other different coding schemes must be indicated</i> (XPath PCOShipmentReport/invoiceInfo/invoiceInfo/tracedObject/productIDandQty/uniqueProductID/@schemeID) [Required] (XPath PCOShipmentReport/PCOShipInfo/sadRef/attachment/hashFootprint/@schemeID) [Optional] - nota: <i>specify for which system this hash footprint might be used as identifier (for example HDFS system..)</i> (XPath PCOShipmentReport/invoiceInfo/refDoc/attachment/hashFootprint/@schemeID) [Optional] - nota: <i>specify for which system this hash footprint might be used as identifier (for example HDFS system..)</i> (XPath PCOShipmentReport/invoiceInfo/invoiceInfo/tracedObject/objectInstanceIdentification/objectID/@schemeID) [Required] (XPath PCOShipmentReport/invoiceInfo/invoiceInfo/productOrigin/refDoc/attachment/hashFootprint/@schemeID) [Optional] - nota: <i>specify for which system this hash footprint might be used as identifier (for example HDFS system..)</i> (XPath PCOShipmentReport/PCOShipInfo/eadRef/attachment/hashFootprint/@schemeID) [Optional] - nota: <i>specify for which system this hash footprint might be used as identifier (for example HDFS system..)</i> (XPath PCOShipmentReport/PCOShipInfo/tracedObject/productIDandQty/uniqueProductID/@schemeID) [Required] (XPath PCOShipmentReport/PCOShipInfo/tracedObject/objectInstanceIdentification/objectID/@schemeID) [Required] (XPath PCOShipmentReport/invoiceInfo/attachment/hashFootprint/@schemeID) [Optional] - nota: <i>specify for which system this hash footprint might be used as identifier (for example HDFS system..)</i>
seal	<p>Customs seal</p> <ul style="list-style-type: none"> - base type: string, (XPath PCOShipmentReport/PCOShipInfo/seal) 0-99
season	<p>sale season; defined as: season (1 crt) + year (4 crt) - season: S/S=1 A/W=2 Spring=3 Summer=4 Autumn=5 Winter=6: for more than four seasons use alphabetic sequence: 1st season=A 2nd season=B etc.etc.</p> <ul style="list-style-type: none"> - base type: string, max length: 15, (XPath PCOShipmentReport/invoiceInfo/invoiceInfo/refDoc/season) 0-1 - note: <i>here indicates the season to which the referenced document belongs</i> (XPath PCOShipmentReport/invoiceInfo/invoiceInfo/productOrigin/refDoc/season) 0-1 - note: <i>here indicates the season to which the referenced document belongs</i> (XPath PCOShipmentReport/invoiceInfo/refDoc/season) 0-1 - note: <i>here indicates the season to which the referenced document belongs</i>
@sender	<p>qualifier that specifies the Party issuing of the document</p> <ul style="list-style-type: none"> - base type: boolean, (XPath PCOShipmentReport/PCOShipInfo/buyer/@sender) [Optional] - nota: <i>This attribute is mandatory when the STYLESHEET must be used</i> (XPath PCOShipmentReport/SRVheader/receiverParty/@sender) [Optional] - nota: <i>This attribute is mandatory when the STYLESHEET must be used.</i> (XPath PCOShipmentReport/SRVheader/senderParty/@sender) [Optional] - nota: <i>This attribute is mandatory when the STYLESHEET must be used.</i>
serviceRequestedAction	<p>requested service action</p> <ul style="list-style-type: none"> - base type: string, cod. table: TRK02 http://www.ebiz.enea.it/moda-ml/repository/codelist/draft/gc_TRK02.xml

	(XPath PCOShipmentReport/SRVheader/platformServiceReference/serviceRequested Action) 1-1
serviceTicketID	service ticket identifier - base type: string, (XPath PCOShipmentReport/SRVheader/platformServiceReference/serviceTicketID) 0 -1 - note: <i>mandatory after activation</i>
shipmentID	Shipment identifier assigned by the logistic operator - base type: string, (XPath PCOShipmentReport/PCOshipInfo/shipmentID) 0-1
street	street and building number identifying a location - base type: string, max length: 80, (XPath PCOShipmentReport/PCOshipInfo/exporter/street) 0-1 (XPath PCOShipmentReport/PCOshipInfo/representative/street) 0-1 (XPath PCOShipmentReport/PCOshipInfo/accountingSupplier/street) 0-1 (XPath PCOShipmentReport/SRVheader/senderParty/street) 0-1 (XPath PCOShipmentReport/PCOshipInfo/trade/tradeLocation/street) 0-1 (XPath PCOShipmentReport/PCOshipInfo/buyer/street) 0-1 (XPath PCOShipmentReport/SRVheader/receiverParty/street) 0-1 (XPath PCOShipmentReport/PCOshipInfo/consignee/street) 0-1
subCountry	short name or code of the sub-country entity - base type: string, max length: 9, (XPath PCOShipmentReport/SRVheader/senderParty/subCountry) 0-1 (XPath PCOShipmentReport/PCOshipInfo/consignee/subCountry) 0-1 (XPath PCOShipmentReport/PCOshipInfo/trade/tradeLocation/subCountry) 0-1 (XPath PCOShipmentReport/SRVheader/receiverParty/subCountry) 0-1 (XPath PCOShipmentReport/PCOshipInfo/buyer/subCountry) 0-1 (XPath PCOShipmentReport/PCOshipInfo/accountingSupplier/subCountry) 0-1 (XPath PCOShipmentReport/PCOshipInfo/exporter/subCountry) 0-1 (XPath PCOShipmentReport/PCOshipInfo/representative/subCountry) 0-1
subDept	name or code of a department - base type: string, max length: 40, (XPath PCOShipmentReport/SRVheader/receiverParty/subDept) 0-1 (XPath PCOShipmentReport/PCOshipInfo/buyer/subDept) 0-1 (XPath PCOShipmentReport/PCOshipInfo/consignee/subDept) 0-1 (XPath PCOShipmentReport/PCOshipInfo/representative/subDept) 0-1 (XPath PCOShipmentReport/PCOshipInfo/trade/tradeLocation/subDept) 0-1 (XPath PCOShipmentReport/PCOshipInfo/exporter/subDept) 0-1 (XPath PCOShipmentReport/PCOshipInfo/accountingSupplier/subDept) 0-1 (XPath PCOShipmentReport/SRVheader/senderParty/subDept) 0-1
transactionReceipt	transaction receipt on blockchain - base type: string, max length: 80, (XPath PCOShipmentReport/invoiceInfo/attachment/ blockChainReference/transactionReceipt) 1-9 (XPath PCOShipmentReport/invoiceInfo/invoiceInfoItem/ productOrigin/refDoc/attachment/blockChainReference/transactionReceipt) 1-9 (XPath PCOShipmentReport/PCOshipInfo/eadRef/attachment/ blockChainReference/transactionReceipt) 1-9 (XPath PCOShipmentReport/PCOshipInfo/sadRef/attachment/ blockChainReference/transactionReceipt) 1-9 (XPath PCOShipmentReport/invoiceInfo/invoiceInfoItem/ refDoc/attachment/blockChainReference/transactionReceipt) 1-9 (XPath PCOShipmentReport/invoiceInfo/refDoc/attachment/ blockChainReference/transactionReceipt) 1-9
@transitZone	Indicates the type of transit zone in which the leg is located - base type: string, cod. table: NT334 http://www.ebiz.enea.it/moda-ml/repository/codelist/draft/gc_NT334.xml (XPath PCOShipmentReport/PCOshipInfo/transportRouteInfo/@transitZone) [Required]
transMeansID	Transport means of identifier: - ship name; - flight number and date or aircraft registrati on number (if there is no flight number); - vehicle registration number plate - base type: string, (XPath PCOShipmentReport/PCOshipInfo/transportRouteInfo/ customsTransportMeansInfo/transMeansID) 0-1

transMode	<p>way of transport, in general or referred to the specified leg</p> <p>- base type: string, cod. table: T8 http://www.ebiz.enea.it/moda-ml/repository/codelist/draft/gc_T8.xml (XPath PCOShipmentReport/PCOshipInfo/transportRouteInfo/customsTransportMeansInfo/transMode) 0-1</p>
@uid	<p>unique element identifier within the xml document</p> <p>- base type: string, (XPath PCOShipmentReport/PCOshipInfo/sadRef/attachment/@uid) [Optional] (XPath PCOShipmentReport/invoiceInfo/invoiceInfo/attachment/refDoc/attachment/@uid) [Optional] (XPath PCOShipmentReport/invoiceInfo/attachment/@uid) [Optional] (XPath PCOShipmentReport/PCOshipInfo/eadRef/attachment/@uid) [Optional] (XPath PCOShipmentReport/invoiceInfo/refDoc/attachment/@uid) [Optional] (XPath PCOShipmentReport/invoiceInfo/invoiceInfo/productOrigin/refDoc/attachment/@uid) [Optional]</p>
@um	<p>specification of the unit of measure</p> <p>- base type: string, cod. table: NT7 http://www.ebiz.enea.it/moda-ml/repository/codelist/draft/gc_NT7.xml (XPath PCOShipmentReport/SRVheader/senderParty/geoCoordinates/@um) [Optional] [Default= DEGD]</p> <p>- nota: <i>when not specified assume decimal DEGREES</i> (XPath PCOShipmentReport/PCOshipInfo/trade/tradeLocation/geoCoordinates/@um) [Optional] [Default= DEGD]</p> <p>- nota: <i>when not specified assume decimal DEGREES</i> (XPath PCOShipmentReport/invoiceInfo/invoiceInfo/tracedObject/productIDandQty/qty/@um) [Required] (XPath PCOShipmentReport/PCOshipInfo/consignee/geoCoordinates/@um) [Optional] [Default= DEGD]</p> <p>- nota: <i>when not specified assume decimal DEGREES</i> (XPath PCOShipmentReport/PCOshipInfo/buyer/geoCoordinates/@um) [Optional] [Default= DEGD]</p> <p>- nota: <i>when not specified assume decimal DEGREES</i> (XPath PCOShipmentReport/PCOshipInfo/representative/geoCoordinates/@um) [Optional] [Default= DEGD]</p> <p>- nota: <i>when not specified assume decimal DEGREES</i> (XPath PCOShipmentReport/PCOshipInfo/grossWeight/@um) [Required] (XPath PCOShipmentReport/PCOshipInfo/netWeight/@um) [Required] (XPath PCOShipmentReport/PCOshipInfo/exporter/geoCoordinates/@um) [Optional] [Default= DEGD]</p> <p>- nota: <i>when not specified assume decimal DEGREES</i> (XPath PCOShipmentReport/invoiceInfo/invoiceInfo/qty/@um) [Required] (XPath PCOShipmentReport/invoiceInfo/invoiceInfo/price/@um) [Optional]</p> <p>- nota: <i>Unit of measure of the product to which the price is referred (price per meter)</i> (XPath PCOShipmentReport/SRVheader/receiverParty/geoCoordinates/@um) [Optional] [Default= DEGD]</p> <p>- nota: <i>when not specified assume decimal DEGREES</i> (XPath PCOShipmentReport/PCOshipInfo/tracedObject/productIDandQty/qty/@um) [Required] (XPath PCOShipmentReport/invoiceInfo/invoiceInfo/netWeight/@um) [Required] (XPath PCOShipmentReport/PCOshipInfo/accountingSupplier/geoCoordinates/@um) [Optional] [Default= DEGD]</p> <p>- nota: <i>when not specified assume decimal DEGREES</i></p>
uniqueProductID	<p>Unique product identifier. It identifies the product completely, differentiating any variants, sizes, colors, etc. It should be unique throughout the whole value chain. (It can be the GTIN)</p> <p>- base type: string, max length: 80, (XPath PCOShipmentReport/PCOshipInfo/tracedObject/productIDandQty/uniqueProductID) 1-1 (XPath PCOShipmentReport/invoiceInfo/invoiceInfo/tracedObject/productIDandQty/uniqueProductID) 1-1</p>
uri	<p>Uniform Resource Identifier (URI) that identifies the external object as an Internet resource</p> <p>- base type: normalizedString, (XPath PCOShipmentReport/PCOshipInfo/sadRef/attachment/externalReference/uri) 1-1</p>

	<p>(XPath PCOShipmentReport/invoiceInfo/invoiceInfoItem/refDoc/attachment/blockChainReference/uri) 1-1 - note: reference to the used blockchain (example: url https://etherscan.io/ of ethereum)</p> <p>(XPath PCOShipmentReport/invoiceInfo/attachment/blockChainReference/uri) 1-1 - note: reference to the used blockchain (example: url https://etherscan.io/ of ethereum)</p> <p>(XPath PCOShipmentReport/invoiceInfo/refDoc/attachment/blockChainReference/uri) 1-1 - note: reference to the used blockchain (example: url https://etherscan.io/ of ethereum)</p> <p>(XPath PCOShipmentReport/invoiceInfo/attachment/externalReference/uri) 1-1 (XPath PCOShipmentReport/invoiceInfo/invoiceInfoItem/productOrigin/refDoc/attachment/externalReference/uri) 1-1 (XPath PCOShipmentReport/invoiceInfo/refDoc/attachment/externalReference/uri) 1-1 (XPath PCOShipmentReport/invoiceInfo/invoiceInfoItem/refDoc/attachment/externalReference/uri) 1-1 (XPath PCOShipmentReport/PCOshipInfo/sadRef/attachment/blockChainReference/uri) 1-1 - note: reference to the used blockchain (example: url https://etherscan.io/ of ethereum)</p> <p>(XPath PCOShipmentReport/PCOshipInfo/eadRef/attachment/externalReference/uri) 1-1 (XPath PCOShipmentReport/PCOshipInfo/eadRef/attachment/blockChainReference/uri) 1-1 - note: reference to the used blockchain (example: url https://etherscan.io/ of ethereum)</p> <p>(XPath PCOShipmentReport/invoiceInfo/invoiceInfoItem/productOrigin/refDoc/attachment/blockChainReference/uri) 1-1 - note: reference to the used blockchain (example: url https://etherscan.io/ of ethereum)</p>
@useProfile	<p>use profile to which the present document is compliant if it was agreed by the parties. It is suggested a URI with reference to the firms or the URL of the profile. - base type: string, (XPath PCOShipmentReport/@useProfile) [Optional]</p>
@version	<p>Dictionary version from which the instance has been created - base type: string, cod. table: NT100 http://www.ebiz.enea.it/moda-ml/repository/codelist/draft/gc_NT100.xml (XPath PCOShipmentReport/@version) [Optional] [Default= draft]</p>
xGeoCoord	<p>geographical coordinate x , corresponding to latitude - base type: decimal, (XPath PCOShipmentReport/PCOshipInfo/exporter/geoCoordinates/xGeoCoord) 1-1 (XPath PCOShipmentReport/PCOshipInfo/representative/geoCoordinates/xGeoCoord) 1-1 (XPath PCOShipmentReport/SRVheader/receiverParty/geoCoordinates/xGeoCoord) 1-1 (XPath PCOShipmentReport/PCOshipInfo/trade/tradeLocation/geoCoordinates/xGeoCoord) 1-1 (XPath PCOShipmentReport/PCOshipInfo/accountingSupplier/geoCoordinates/xGeoCoord) 1-1 (XPath PCOShipmentReport/SRVheader/senderParty/geoCoordinates/xGeoCoord) 1-1 (XPath PCOShipmentReport/PCOshipInfo/buyer/geoCoordinates/xGeoCoord) 1-1 (XPath PCOShipmentReport/PCOshipInfo/consignee/geoCoordinates/xGeoCoord) 1-1</p>
year	<p>reference year - base type: integer, min inclusive: 1800, max inclusive: 2100, (XPath PCOShipmentReport/invoiceInfo/invoiceInfoItem/year) 0-1 - note: Year of production of the goods</p>
yGeoCoord	<p>geographical coordinate y , corresponding to longitude - base type: decimal, (XPath PCOShipmentReport/PCOshipInfo/accountingSupplier/geoCoordinates/yGeoCoord) 1-1</p>

	<p>(XPath PCOShipmentReport/SRVheader/receiverParty/ geoCoordinates/yGeoCoord) 1-1</p> <p>(XPath PCOShipmentReport/PCOshipInfo/buyer/geoCoordinates/yGeoCoord) 1-1</p> <p>(XPath PCOShipmentReport/PCOshipInfo/trade/tradeLocation/ geoCoordinates/yGeoCoord) 1-1</p> <p>(XPath PCOShipmentReport/PCOshipInfo/consignee/ geoCoordinates/yGeoCoord) 1-1</p> <p>(XPath PCOShipmentReport/SRVheader/senderParty/ geoCoordinates/yGeoCoord) 1-1</p> <p>(XPath PCOShipmentReport/PCOshipInfo/representative/ geoCoordinates/yGeoCoord) 1-1</p> <p>(XPath PCOShipmentReport/PCOshipInfo/exporter/geoCoordinates/yGeoCoord) 1-1</p>
zGeoCoord	<p>geographical coordinate z , corresponding to altitude</p> <p>- base type: decimal,</p> <p>(XPath PCOShipmentReport/PCOshipInfo/trade/tradeLocation/ geoCoordinates/zGeoCoord) 0-1</p> <p>- note: <i>altitude might be omitted</i></p> <p>(XPath PCOShipmentReport/SRVheader/senderParty/ geoCoordinates/zGeoCoord) 0-1</p> <p>- note: <i>altitude might be omitted</i></p> <p>(XPath PCOShipmentReport/SRVheader/receiverParty/ geoCoordinates/zGeoCoord) 0-1</p> <p>- note: <i>altitude might be omitted</i></p> <p>(XPath PCOShipmentReport/PCOshipInfo/representative/ geoCoordinates/zGeoCoord) 0-1</p> <p>- note: <i>altitude might be omitted</i></p> <p>(XPath PCOShipmentReport/PCOshipInfo/exporter/geoCoordinates/zGeoCoord) 0-1</p> <p>- note: <i>altitude might be omitted</i></p> <p>(XPath PCOShipmentReport/PCOshipInfo/buyer/geoCoordinates/zGeoCoord) 0-1</p> <p>- note: <i>altitude might be omitted</i></p> <p>(XPath PCOShipmentReport/PCOshipInfo/consignee/ geoCoordinates/zGeoCoord) 0-1</p> <p>- note: <i>altitude might be omitted</i></p> <p>(XPath PCOShipmentReport/PCOshipInfo/accountingSupplier/ geoCoordinates/zGeoCoord) 0-1</p> <p>- note: <i>altitude might be omitted</i></p>

2.3 Suggested best practices

PCOShipmentReport/invoiceInfo/refDoc (identification of a document and of an item thereof, to which the message makes reference)

Use this element only if all the invoice lines are related to the same order; otherwise use the refDoc at invoiceInfo element level

**PCOShipmentReport/invoiceInfo/invoiceInfoItem/
productOrigin/refDoc/docID (identification number of the referenced document)**

numberingOrg indicates the role that produced the document identifier (it is allowed to declare two different ones -e.g. customer and supplier - with two docID with different numberingOrg

PCOShipmentReport/invoiceInfo/refDoc/docID (identification number of the referenced document)

numberingOrg indicates the role that produced the document identifier (it is allowed to declare two different ones -e.g. customer and supplier - with two docID with different numberingOrg

**PCOShipmentReport/invoiceInfo/invoiceInfoItem/
refDoc/docID (identification number of the referenced document)**

numberingOrg indicates the role that produced the document identifier (it is allowed to declare two different ones -e.g. customer and supplier - with two docID with different numberingOrg

PCOShipmentReport/invoiceInfo/invoiceInfoItem/itemID (number of the line/item of the referenced document)

Use this element only if the invoice lines are related to different orders; otherwise use the refDoc at invoiceInfo element level

**PCOShipmentReport/invoiceInfo/invoiceInfoItem/
productOrigin/refDoc/attachment/externalReference/mimeType (mime type of the external object)**

Use coding from IANA <http://www.iana.org/assignments/media-types/media-types.xml>

**PCOShipmentReport/invoiceInfo/invoiceInfoItem/
refDoc/attachment/externalReference/mimeType (mime type of the external object)**

Use coding from IANA <http://www.iana.org/assignments/media-types/media-types.xml>

**PCOShipmentReport/invoiceInfo/attachment/
externalReference/mimeType (mime type of the external object)**

Use coding from IANA <http://www.iana.org/assignments/media-types/media-types.xml>

**PCOShipmentReport/PCOShipInfo/eadRef/attachment/
externalReference/mimeType (mime type of the external object)**

Use coding from IANA <http://www.iana.org/assignments/media-types/media-types.xml>

**PCOShipmentReport/invoiceInfo/refDoc/attachment/
externalReference/mimeType (mime type of the external object)**

Use coding from IANA <http://www.iana.org/assignments/media-types/media-types.xml>

**PCOShipmentReport/PCOShipInfo/sadRef/attachment/
externalReference/mimeType (mime type of the external object)**

Use coding from IANA <http://www.iana.org/assignments/media-types/media-types.xml>

2.4 Enumeration tables

List of enumeration tables used in the XML document. You can find all the tables with the corresponding codes at:
<http://www.ebiz.enea.it/eBIZ/imple/eBIZTCU-draft.asp?lingua=en&pag=6>

NT100 - eBIZ TCFUpstream version
NT2 - third party qualifier
NT20 - price qualifier
NT202 - Type of the object Instance
NT29 - format of a date
NT3 - issuer of the identifier (or identification system) of a location.
NT331 - Nature of transaction
NT333 - type of hashing algorithm
NT334 - Transit zone referring to international shipping
NT6 - coding system owner/issuer
NT60 - language, codes from ISO 639-1 (subset)
NT7 - unit of measure
T10 - ISO3166 - Country
T21 - type of document
T3 - terms of delivery - IncoTerms
T302 - type of object
T8 - Modes of Transport
T9 - ISO4217 - Currency
TRK01 - list of available services
TRK02 - list of services functions

(the most relevant tables are detailed in the following Annexes too)

ACKNOWLEDGEMENT



This action is part of the TRICK project, which has received funding from Horizon 2020 research and innovation programme under grant agreement No. 958352 of the European Union.

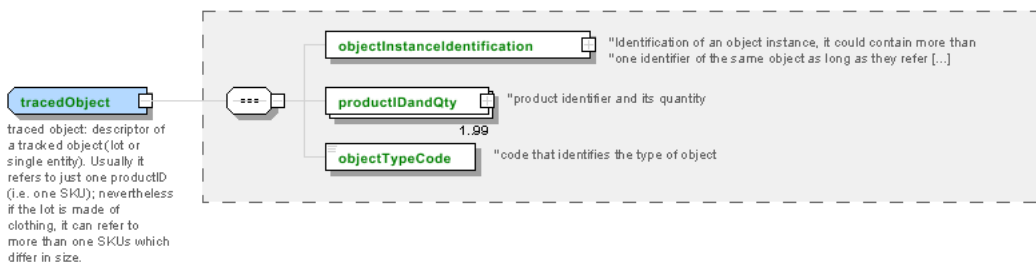
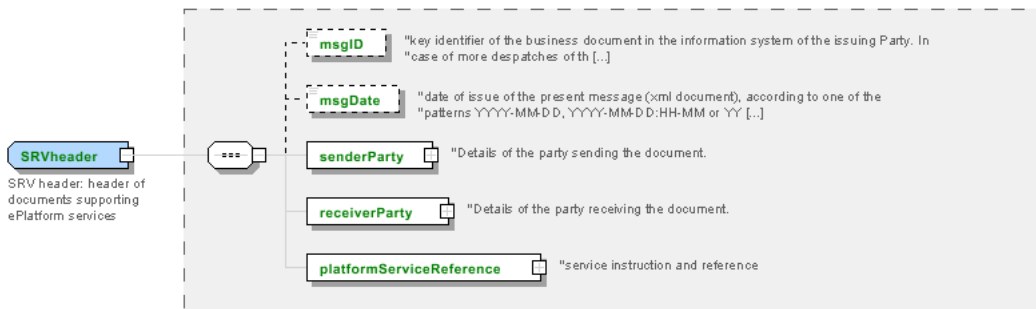
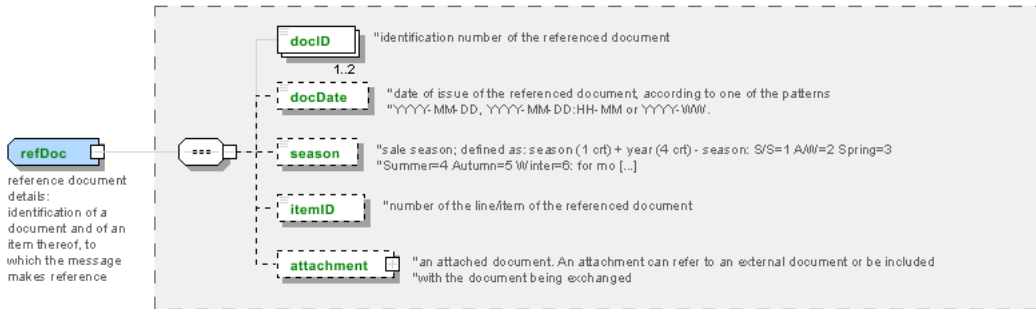
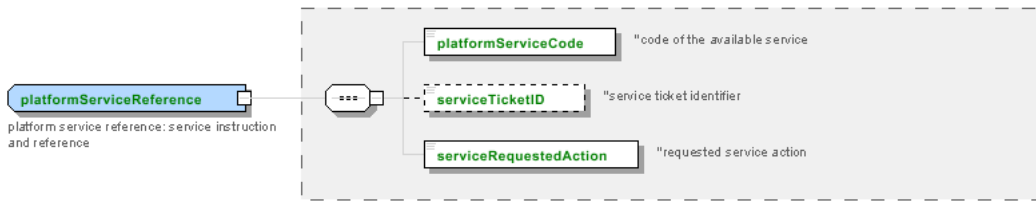
DISCLAIMER

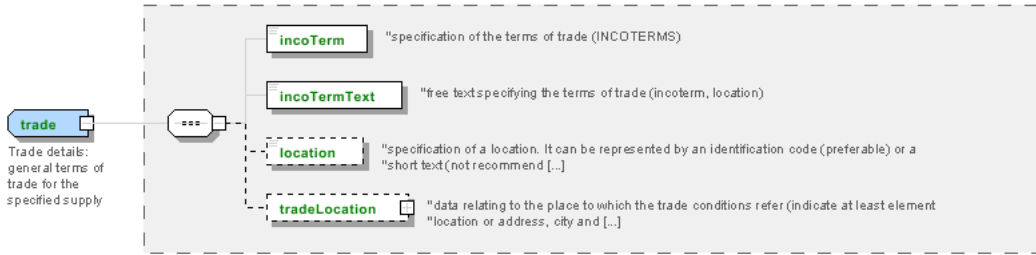
The content of this document represents the views of the authors only and is their sole responsibility; it cannot be considered to reflect the views of the European Commission or any other body of the European Union.

The European Commission does not accept any responsibility for use that may be made of the information it contains.

Annex A

Representative images of the principal complex elements' structure.





Annex B

NT100 - eBIZ TCFUpstream version

dictionary version

Agency name: eBIZ

Decoding table: NT100

File codes list (Generic code): http://www.ebiz.enea.it/moda-ml/repository/codelist/draft/gc_NT100.xml

Code	Description	Adoption note	Date of insertion
2013-1	v2013-1		01/07/2013
2018-1	v2018-1		04/11/2018
draft	draft		08/09/2017

NT2 - third party qualifier

Third Party role qualifier

Agency name: eBIZ

Decoding table: NT2

File codes list (Generic code): http://www.ebiz.enea.it/moda-ml/repository/codelist/draft/gc_NT2.xml

Code	Description	Adoption note	Date of insertion
AG	Sales Agent		
AU	Auditor		08/04/2019
BU	Buyer		13/06/2022
CE	Certification authority		08/04/2019
CM	Commissioner		13/06/2022
CO	Quality Controller		
CU	Customs authority		13/06/2022
DC	Response to		
DF	Invoicee		
DI	Copy to (CC)		28/10/2014
DM	Consignee		
DP	Consignment address (Delivery Party)		
EX	Expert		13/06/2022
IM	Importer		
OR	Originator		10/09/2014
SC	Sub contractor		10/04/2019
SM	Service/ePlatform manager		08/04/2019

SP	Forwarder		
SU	Supplier		13/06/2022
TL	Test or analysis laboratory		13/06/2022
TX	Tax Representative		

NT20 - price qualifier

type of price with reference to discount and taxes

Agency name: eBIZ

Decoding table: NT20

File codes list (Generic code): http://www.ebiz.enea.it/moda-ml/repository/codelist/draft/gc_NT20.xml

Code	Description	Adoption note	Date of insertion
GET	gross excluding taxes		
GIT	gross including taxes		
NET	net excluding taxes		
NIT	net including taxes		

NT202 - Type of the object Instance

indicates the type of the object Instance

Agency name: eBIZ for TRICK

Decoding table: NT202

File codes list (Generic code): http://www.ebiz.enea.it/moda-ml/repository/codelist/draft/gc_NT202.xml

Code	Description	Adoption note	Date of insertion
IST	an individual instance of the object		13/06/2022
LOT	lot or batch of objects		13/06/2022

NT29 - format of a date

format used for the date

Agency name: eBIZ

Decoding table: NT29

File codes list (Generic code): http://www.ebiz.enea.it/moda-ml/repository/codelist/draft/gc_NT29.xml

Code	Description	Adoption note	Date of insertion
D	YYYY-MM-DD		

M	YYYY-MM-DD:HH-MM (date and time)		
S	AAAA-MM-GG:HH-MM-SS (date and time with seconds)		13/06/2022
W	YYYY-WW		

NT3 - issuer of the identifier (or identification system) of a location.

List of possible issuers of the identifier (or identification system) of a location.

Agency name: eBIZ

Decoding table: NT3

File codes list (Generic code): http://www.ebiz.enea.it/moda-ml/repository/codelist/draft/gc_NT3.xml

Code	Description	Adoption note	Date of insertion
EN4	GS1-GLN	obsolete	01/07/2013
GLN	GS1-GLN	equivalent to EN4	25/04/2023
MD	mutually agreed		
NCA	National custom authority	identifier of a bonded warehouse assigned by the custom authority	19/05/2023
PLA	Platform	internal coding of the involved platform	14/05/2023
TRI	TRICK		14/05/2023

NT331 - Nature of transaction

Nature of the business transaction (e.g. indicated on the customs declaration). Reference: Commission implementing Regulation (EU) 2020/1197 of 30 July 2020 <https://eur-lex.europa.eu/legal-content/EN/TXT/?uri=CELEX%3A32020R1197>

Decoding table: NT331

File codes list (Generic code): http://www.ebiz.enea.it/moda-ml/repository/codelist/draft/gc_NT331.xml

Other link: <https://eur-lex.europa.eu/legal-content/EN/TXT/?uri=CELEX%3A32020R1197#>

Code	Description	Adoption note	Date of insertion
11	"Outright sale/purchase except direct trade with/by private consumers"		13/06/2023
12	Direct trade with/by private consumers (including distance sale)		13/06/2023
21	Return of goods		13/06/2023
22	Replacement for returned goods		13/06/2023
23	Replacement (e.g. under warranty) for goods not being returned		13/06/2023
31	Movements to/from a warehouse (excluding call off and consignment stock)		13/06/2023

32	Supply for sale on approval or after trial (including call-off and consignment stock)		13/06/2023
33	Financial leasing		13/06/2023
34	Transactions involving transfer of ownership without financial compensation		13/06/2023
41	Goods expected to return to the initial Member State/country of export		13/06/2023
42	Goods not expected to return to the initial Member State/country of export		13/06/2023
51	Goods returning to the initial Member State/country of export		13/06/2023
52	Goods not returning to the initial Member State/country of export		13/06/2023
6	Particular transactions recorded for national purposes		13/06/2023
71	Release of goods for free circulation in a Member State with a subsequent export to another Member State		13/06/2023
72	Transportation of goods from one Member State to another Member State to place the goods under the export procedure		13/06/2023
8	Supply of building materials and technical equipment under a general construction or civil engineering contract for which no separate invoicing of the goods is required and an invoice for the total contract is issued		
91	Hire, loan, and operational leasing longer than 24 months		13/06/2023
99	Other		13/06/2023

NT333 - type of hashing algorithm

type of hashing algorithm

Decoding table: NT333

File codes list (Generic code): http://www.ebiz.enea.it/moda-ml/repository/codelist/draft/gc_NT333.xml

Code	Description	Adoption note	Date of insertion
ADLER32	ADLER32		26/05/2023
HMAC	HMAC		26/05/2023
MD2	MD2		26/05/2023
MD4	MD4		26/05/2023
MD5	MD5		26/05/2023
MDC-2	MDC-2		26/05/2023
PANAMA	PANAMA		26/05/2023
RIPEMD-160	RIPEMD-160		26/05/2023
SHA-1	SHA-1		26/05/2023

SHA-2 256	SHA-2 256		26/05/2023
SHA-2 384	SHA-2 384		26/05/2023
SHA-2 512	SHA-2 512		26/05/2023
TIGER	TIGER		26/05/2023

NT334 - Transit zone referring to international shipping

Indicates the type of transit zone in which a leg of an international shipment is located

Agency name: eBIZ

Decoding table: NT334

File codes list (Generic code): http://www.ebiz.enea.it/moda-ml/repository/codelist/draft/gc_NT334.xml

Code	Description	Adoption note	Date of insertion
cross	from the EU border to the customs of the country of destination		12/06/2023
destination	from the customs of the country of destination to the place of destination of the goods		12/06/2023
internal	from the place of despatch of the goods to the EU border		12/06/2023

NT6 - coding system owner/issuer

code specifying the organisation who has created or owns the registers of the present coding or numbering system

Agency name: eBIZ

Decoding table: NT6

File codes list (Generic code): http://www.ebiz.enea.it/moda-ml/repository/codelist/draft/gc_NT6.xml

Code	Description	Adoption note	Date of insertion
CBR	National customs brokers registry		12/06/2023
CL	Customer/buyer		
CO	Quality Controller		
DU	D-U-N-S registry (Data Universal Numbering System)		04/05/2023
EB	eBIZ	replaces 'ML'	18/03/2019
EN	GS1 (ex-EAN International)		
EO	Registro EORI (Economic Operators Registration and Identification number)		04/03/2023
ES	e-Stockflow	DEPRECATED	
FO	Supplier		
GS	GS1		01/07/2013
MF	national taxation authority (i.e. VAT codes registry)		

ML	Moda-ML	DEPRECATED	
PL	Application Platform		13/06/2022
REX	Registered Exporter system (REX)		19/05/2023
SP	Service Provider		
SU	Enterprise Identification Number UID	Only switzerland	04/03/2023

NT60 - language, codes from ISO 639-1 (subset)

Agency name: eBIZ / ISO

Decoding table: NT60

File codes list (Generic code): http://www.ebiz.enea.it/moda-ml/repository/codelist/draft/gc_NT60.xml

Code	Description	Adoption note	Date of insertion
af	Afrikaans		31/01/2019
ar	Arabic		31/01/2019
be	Belarusian		31/01/2019
bg	Bulgarian		31/01/2019
bn	Bengali		31/01/2019
bo	Tibetan		31/01/2019
bs	Bosnian		31/01/2019
ca	Catalan, Valencian		31/01/2019
cs	Czech		31/01/2019
da	Danish		31/01/2019
de	German		31/01/2019
el	Greek, Modern (1453-)		31/01/2019
en	English		31/01/2019
eo	Esperanto		31/01/2019
es	Spanish, Castilian		31/01/2019
et	Estonian		31/01/2019
eu	Basque		31/01/2019
F	Female		15/04/2019
fa	Persian		31/01/2019
fi	Finnish		31/01/2019
fr	French		31/01/2019
ga	Irish		31/01/2019
gd	Gaelic, Scottish Gaelic		31/01/2019
gn	Guarani		31/01/2019
he	Hebrew		31/01/2019

hr	Croatian		31/01/2019
ht	Haitian, Haitian Creole		31/01/2019
hu	Hungarian		31/01/2019
hy	Armenian		31/01/2019
ia	Interlingua (International Auxiliary Language Association)		31/01/2019
id	Indonesian		31/01/2019
is	Icelandic		31/01/2019
it	Italian		31/01/2019
ja	Japanese		31/01/2019
jv	Javanese		31/01/2019
ka	Georgian		31/01/2019
km	Central Khmer		31/01/2019
ko	Korean		31/01/2019
ku	Kurdish		31/01/2019
lb	Luxembourgish, Letzeburgesch		31/01/2019
lo	Lao		31/01/2019
lt	Lithuanian		31/01/2019
lv	Latvian		31/01/2019
mg	Malagasy		31/01/2019
mk	Macedonian		31/01/2019
mn	Mongolian		31/01/2019
mt	Maltese		31/01/2019
nl	Dutch, Flemish		31/01/2019
no	Norwegian		31/01/2019
pl	Polish		31/01/2019
pt	Portuguese		31/01/2019
ro	Romanian, Moldavian, Moldovan		31/01/2019
ru	Russian		31/01/2019
se	Northern Sami		31/01/2019
sk	Slovak		31/01/2019
sl	Slovenian		31/01/2019
sm	Samoan		31/01/2019
so	Somali		31/01/2019
sq	Albanian		31/01/2019
sr	Serbian		31/01/2019
sv	Swedish		31/01/2019
sw	Swahili		31/01/2019
ta	Tamil		31/01/2019

th	Thai		31/01/2019
tr	Turkish		31/01/2019
uk	Ukrainian		31/01/2019
ur	Urdu		31/01/2019
uz	Uzbek		31/01/2019
vi	Vietnamese		31/01/2019
zh	Chinese		31/01/2019

NT7 - unit of measure

specification of the unit of measure, it is a sub set of table Unit of Measure Code - UN/ECE REC 20 delivered by United Nations Economic Commission for Europe (UN/ECE)

Agency name: eBIZ / UN/ECE

Decoding table: NT7

File codes list (Generic code): http://www.ebiz.enea.it/moda-ml/repository/codelist/draft/gc_NT7.xml

Other link: <http://docs.oasis-open.org/ubl/os-UBL-2.1/cl/gc/default/UnitOfMeasureCode-2.1.gc#>

Code	Description	Adoption note	Date of insertion
CMK	square centimetre		20/12/2017
CMQ	cubic centimetre		20/12/2017
CMT	centimetre		
CNE	centiNewton		
CO2TON	ton of CO2		10/09/2014
COUPLES	couples		
DAY	day		22/08/2022
DEGD	decimal degrees		04/07/2022
DEGMS	degrees with minutes and seconds		01/07/2022
DMQ	cubic decimetre		
E37	pixel		11/04/2018
GRM	gram		
HUR	hour		
INH	inch		
KGM	kilogram		
KMT	kilometer		
KWH	kilowatthours		10/09/2014
LBR	pound		
MCG	microgram		23/08/2022
MG	milligram		23/08/2022
MIN	minute		

MMK	square millimetre		20/12/2017
MONTH	month		22/08/2022
MSEC	millisecond (time)		22/08/2022
MTK	square metre		20/12/2017
MTQ	cubic metre		
MTR	metre		
NMB	numero		
ONZ	ounce		
P1	percent		
PPM	parts per milion		
PZ	piece		
RPM	rounds per metre		
SEC	second (time)		22/08/2022
YEAR	year		22/08/2022
YRD	yard		

T10 - ISO3166 - Country

code of the nation

Agency name: ISO

Decoding table: T10

File codes list (Generic code): http://www.ebiz.enea.it/moda-ml/repository/codelist/draft/gc_T10.xml

Table not printed: there are 240 elements, more than the maximum specified for printing: 99.

T21 - type of document

type or class to which the referenced document belongs

Agency name: eBIZ

Decoding table: T21

File codes list (Generic code): http://www.ebiz.enea.it/moda-ml/repository/codelist/draft/gc_T21.xml

Code	Description	Adoption note	Date of insertion
BIL	Bill of lading		07/03/2023
BOR	Blanket order		01/02/2018
CAT	Price catalogue - tech sheet		
CEO	Certificate of origin		13/04/2018
CER	Certificate		13/04/2018
CMR	CMR consignment note		07/03/2023

COC	Colour card		
CRN	Credit note		08/09/2017
CTO	Checking order		01/07/2013
CTR	Contract		
CXF	CxF3 file		01/07/2013
DAD	Darn order		
DDT	Delivery note (transport document)		
DEA	Despatch advise		
DER	Despatch request		
DR	Document Request		02/12/2014
EAD	Export Accompanying Document	adopted by European customs	12/05/2023
ECMR	electronic CMR consignment note		07/03/2023
ECUS	EXPORT Custom Declaration		07/03/2023
FOR	Forecast		02/12/2014
GSO	Garment stock offer		
GSX	Garment stock offer change		
ICUS	IMPORT Custom Declaration		07/03/2023
INV	Invoice		
KCC	Knitting-Clothing Commission Order		02/12/2014
KCI	Garment in Work Inventory Report		02/12/2014
LCA	LCA study		28/08/2022
LCAD	LCA study dataset		28/08/2022
M2M	Made to Measure Production Order		02/12/2014
MAS	Master marker		
MCI	Visual merchandising instruction		13/04/2018
OCH	Order change		
OFF	Offer		
ORD	Purchase order		
ORP	Order response		
OSR	order status request		
OSS	Offer status		02/12/2014
OST	Order status		
OUR	our reference		
PCO	Preferential certificate of origin		07/03/2023
PEF	PEF study		28/08/2022
PEFD	PEF study dataset		28/08/2022
PEFP	PEF environmental profile		07/03/2023
QR	Quality Report		02/12/2014

RAI	Raw Material in Work Inventory Report		02/12/2014
RDC	Raw dyeing commission order		
RDH	Raw dyeing order change		
RDR	Raw dyeing order response		
REA	Receiving advise		
REQ	Request for Offer		
RET	Return		02/12/2014
RSC	Spinning commission order		
RSH	Spinning order change		
RSR	Spinning order response		
SAD	Single Administrative Document	adopted by European customs	12/05/2023
SCL	Process sheet		
SDE	Self-declaration		07/03/2023
SDS	SDS - Safety data sheet		07/03/2023
SLCA	S-LCA Study		07/03/2023
SLCAD	S-LCA Study documentation		07/03/2023
TFC	Textile dyeing-finishing commission order		
TFX	Textile Dyeing-Finishing Order Change		02/12/2014
TPC	Textile printing commission order		
TPX	Textile Printing Order Change		02/12/2014
TWI	Textile in work inventory		
VMI	visual merchandising instructions		01/02/2018
WAC	Warping commission order		
WAYB	Waybill		07/03/2023
WEC	Weaving commission order		
YDC	Yarn dyeing commission order		
YDH	Yarn dyeing order change		
YDR	Yarn dyeing order response		
YTC	Twisting commission order		
YWI	Yarn in work inventory		

T3 - terms of delivery - IncoTerms

specification of the terms of trade (INCOTERMS)

Agency name: Incoterms

Decoding table: T3

File codes list (Generic code): http://www.ebiz.enea.it/moda-ml/repository/codelist/draft/gc_T3.xml

Other link: <https://iccwbo.org/resources-for-business/incoterms-rules/incoterms-2020/#>

Code	Description	Adoption note	Date of insertion
CFR	COST AND FREIGHT (named port of destination)		
CIF	COST, INSURANCE AND FREIGHT (named port of destination)		
CIP	CARRIAGE AND INSURANCE PAID (named place of destination)		
CP T	CARRIAGE PAID (named place of destination)		
DAF	DELIVERED AT FRONTIER (named place)	according to Incoterms® 2010, since 2020 it is OBSOLETE.	08/12/2017
DAP	Delivered at Place of destination (named place of destination)	according to Incoterms® 2010	08/12/2017
DAT	Delivered at Terminal (named place of destination)	according to Incoterms® 2010, since 2020 it is OBSOLETE.	08/12/2017
DDP	DELIVERED DUTY PAID (named place of destination)		
DDU	DELIVERED DUTY UNPAID (named place of destination)	according to Incoterms® 2010 it is OBSOLETE , use DAP	08/12/2017
DEQ	DELIVERED EX-QUAY (named port of destination)	according to Incoterms® 2010 it is OBSOLETE	08/12/2017
DES	DELIVERED EX-SHIP (named port of destination)	according to Incoterms® 2010 it is OBSOLETE	08/12/2017
DDU	DELIVERED AT PLACE UNLOADED	according to Incoterms® 2020	25/04/2022
EXW	EX WORKS (named place)		
FAS	FREE ALONGSIDE SHIP (named port of shipment)		
FC A	FREE CARRIER (named place)		
FOB	FREE ON BOARD (named port of shipment)		

T302 - type of object

indicates the type of object. Indicates the nature of a traceable object (for example a truck load).

Agency name: eBIZ for TRICK

Decoding table: T302

File codes list (Generic code): http://www.ebiz.enea.it/moda-ml/repository/codelist/draft/gc_T302.xml

Code	Description	Adoption note	Date of insertion
ACCE	accessory		13/06/2022
CFBR	fiber (combed)		01/09/2022
FABR	fabric (finished) (non knitted)	after any finishing or dyeing or darning	01/09/2022

FIL	filament		01/09/2022
GARM	garment (finished)	garment ready fo use (sales, rent or anything else)	13/06/2022
GRCO	garment component		13/06/2022
KNFA	knitted fabric (finished)		01/09/2022
LFIB	lose fibers		01/09/2022
PFBR	fiber (processed)		01/07/2022
POLY	polymer		04/09/2022
PPFB	fiber (preprocessed)	might include washed fiber or dyed	01/09/2022
RAFA	fabric (non knitted) (raw)		01/09/2022
RAFI	fiber (raw)	before any kind of treatment or preprocessing	01/09/2022
RAGA	garment (unfinished)		01/09/2022
RAKF	knitted fabric (unfinished)		01/09/2022
RAYA	yarn (unfinished)		13/06/2022
TOPS	tops		23/03/2023
TRIM	trimming		01/09/2022
WACC	waste accessories		01/09/2022
WFFP	waste fabric from fabric production		01/09/2022
WFGP	waste fabric from garment production		01/09/2022
WFYP	waste fibre from yarn production		01/09/2022
WGGP	waste garment from garment production		01/09/2022
WPAC	waste accessories (Post-Consumer)		01/09/2022
WPFB	waste fabric (Post-Consumer)		01/09/2022
WPGR	waste garment (Post-Consumer)		01/09/2022
WPTR	waste trimming (Post-Consumer)		01/09/2022
WTRM	waste trimming		01/09/2022
WYFP	waste yarn from fabric production		01/09/2022
WYYP	waste yarn from yarn production		01/09/2022
YARN	yarn (finished)		13/06/2022

T8 - Modes of Transport

way of transport, in general or referred to the specified leg. Derived from UNECE Recommendation 28 (see link)

Agency name: eBIZ

Decoding table: T8

File codes list (Generic code): http://www.ebiz.enea.it/moda-ml/repository/codelist/draft/gc_T8.xml

Other link: <https://tfig.unece.org/contents/recommendation-28.htm#>

Code	Description	Adoption note	Date of insertion
------	-------------	---------------	-------------------

1	MARITIME TRANSPORT		
10	Courier	DEPRECATED	01/07/2013
2	RAIL TRANSPORT		
3	ROAD TRANSPORT		
4	AIR TRANSPORT		
5	MAIL		
6	MULTIMODAL TRANSPORT	example ship + truck. Not used for custom declarations.	13/06/2023
8	INLAND WATER TRANSPORT		
9	MODE UNKNOWN	Includes Own propulsion	13/06/2023

T9 - ISO4217 - Currency

currency code

Agency name: ISO

Decoding table: T9

File codes list (Generic code): http://www.ebiz.enea.it/moda-ml/repository/codelist/draft/gc_T9.xml

Table not printed: there are 205 elements, more than the maximum specified for printing: 99.

TRK01 - list of available services

Agency name: TRICK project

Decoding table: TRK01

File codes list (Generic code): http://www.ebiz.enea.it/moda-ml/repository/codelist/draft/gc_TRK01.xml

Code	Description	Adoption note	Date of insertion
0	Traceability		07/09/2022
1	PCO, Preferential Origin certification		07/09/2022
2	Circular Manufacturing assessment		07/09/2022
3	PEF and environmental footprint		07/09/2022
4	Health protection assessment		07/09/2022
5	Social and Ethical protection assessment		07/09/2022

TRK02 - list of services functions

Agency name: TRICK project

Decoding table: TRK02

File codes list (Generic code): http://www.ebiz.enea.it/moda-ml/repository/codelist/draft/gc_TRK02.xml

Code	Description	Adoption	Date of
------	-------------	----------	---------

		note	insertion
activate	service activation		07/09/2022
execution	service execution		07/09/2022
getinfo	getting information from the service		07/09/2022
proposedreport	proposal for the final report		07/09/2022
reportapproval	final report approved		07/09/2022
reportrejected	final report rejected		07/09/2022
setinfo	uploading information to the service		07/09/2022