



<http://www.ebiz-tcf.eu>

**DRAFT**

**IMPLEMENTATION GUIDE**

**TRANSACTION "TEXTILE ORDER CHANGE"**

Version: draft

Date of release: 17/5/2019

Document code: G004

technical Documentation: <http://www.ebiz.enea.it>

XML Schemas repository: <http://www.ebiz.enea.it/moda-ml/repository/schema/draft/default.asp>

Guides repository: <http://www.ebiz.enea.it/moda-ml/repository/guide/draft/default.asp>

Guide filename: G004-eBIZ-TextileOrderChange.pdf

## 0. PREMISE

This document contains a proposal for the updating and extension of eBIZ specifications starting from the eBIZ version released as CEN CWA 16667 in 2013. Under the name of 'Draft version' it is reported the result of an extensive work of analysis and consultation aimed at developing and maintaining eBIZ specifications.

In particular, the content of this proposal is the result of various activities, mainly those carried out within the framework of the **eBIZ 4.0 project** funded by the European Commission, call COS-DESIGN-2015-3-06, topic COS-2015-DESIGN-2.

The technical contents are backwards compatible with the latest official published version.

## 1. BUSINESS DESCRIPTION

### 1.1 Scope

The present guide has been issued to assist the companies of the Textile-Clothing sector in the implementation of the standard XML document type "Textile ORDER CHANGE", providing all the instruction required for its use in any context of e-commerce between Apparel Producers and Fabric Producers.

All the rules required for the construction and validation of the document are embedded into the specific XML-Schema, which is detailed in section "Implementation guide".

### 1.2 Generalities

The Apparel Producer sends to the Fabric Producer an Order Change any time he must modify some conditions of his previous Order (eg. to cancel items not delivered in time) or amend errors (eg. invalid prices).

Basic function of the message is to replace an invalid Order with a valid Order, amending:

- suppliable quantities
- dates and places of delivery
- prices

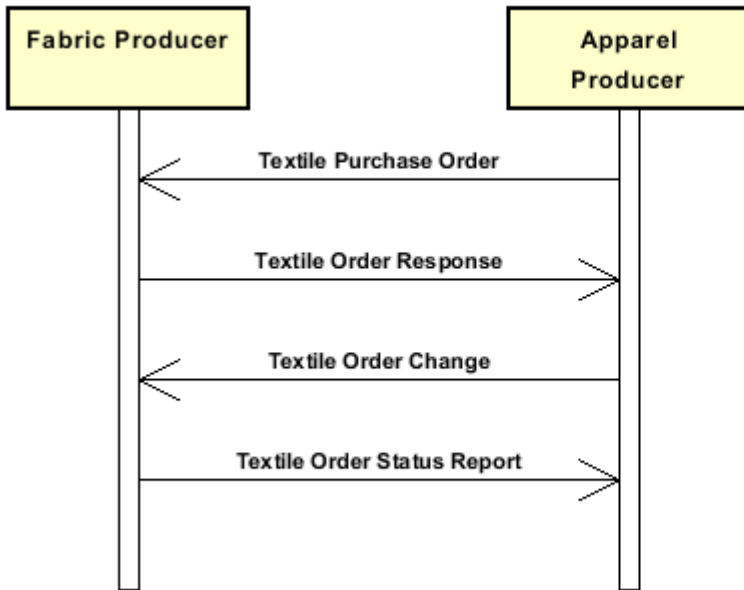
The Order Change can show a number of lines different from the related Purchase Order, when variations/cancellations have occurred so as to create the splitting of an Order Line.

However the sum of the quantities of the lines in the Order Change (confirmed + varied + cancelled) must always not less than the sum of the quantities in the original Order.

When the quantity is change the original line must be splitted and the confirmed amount and canceled amount should be explicated through the 'act' flag.

### 1.3. Possible scenario

Purchase of fabric



## 1.4. Best practices

Usage example: Initial Order ORD-1

lineN	act	refDOC	any type of article code	qty	deliveryDate
1	-	CAT-1	Art-111	100	20-1-2017
2	-	CAT-1	Art-222	200	20-1-2017
2	-	CAT-1	Art-333	300	20-1-2017
2	-	CAT-1	Art-444	400	20-1-2017

Changed Order CHORD-2

lineN	act	refDOC	any type of article code	qty	deliveryDate
1	C	ORD-1, line1	Art-111	100	20-1-2017
2	C	ORD-1, line2	Art-222	60	20-1-2017
3	A	ORD-1, line2	Art-222	40	20-1-2017
4	C	ORD-1, line3	Art-333	300	20-1-2017
5	V	ORD-1, line4	Art-444	400	12-2-2017

## 2. IMPLEMENTATION GUIDE

### 2.1 General structure of XML document

All the business data that can be exchanged through this class of documents are shown in the following "document structure", that provides a simplified vision of the Schema.

In particular:

- the two numbers following each element define its "cardinality" (minimum and maximum number of occurrences); the minimum equal zero indicates that the element is optional, the minimum greater than zero indicates that is mandatory;
- the bold character denotes the complex elements (aggregates of simple elements) that were built for the sake of functionality and re-usability of some complex informations sets. The child elements in each parent element are easily spotted as "indented";
- the symbol "@" denotes an attribute of the preceding element; here "the usage indicator (optional, required, ...)" is shown in square brackets.

### Structure

#### TEXOrdChange

*@Totype [Optional]*

*@msgfunction [Optional] [Default= OR]*

*@version [Optional] [Default= draft]*

*@useProfile [Optional]*

#### | **TXheader 1-1**

| | msgN 1-1

| - choose -

| | msgID 0-1

| - or -

| | docID 0-1

| | *@numberingOrg [Optional]*

| - end choose -

| | msgDate 1-1

| | *@dateForm [Optional]*

| | validityEnd 0-1

| | *@dateForm [Optional]*

| | msgCurrency 0-1

| | otherCurrency 0-9

| | *@currencyUseQualifier [Required]*

| | *@exchangeRate [Optional]*

#### | | **refDoc 1-9**

| | *@docType [Required]*

| | | docID 1-2

| | | *@numberingOrg [Optional]*

| | | docDate 0-1

| | | *@dateForm [Optional]*

| | | season 0-1

| | | *@numberingOrg [Optional]*

| | | *@codeList [Optional]*

| | | *@listName [Optional]*

| | | *@listVersion [Optional]*

| | | itemID 0-1

#### | | | **attachment 0-1**

| | | *@uid [Optional]*

| | | | fileName 0-1

| | | | *@numberingOrg [Optional]*

| | | | binaryObject 0-1

| | | | *@format [Optional]*

| | | | *@mime [Optional]*

| | | | *@encoding [Optional]*

| | | @characterSet [Optional]  
| | | **externalReference 0-99**  
| | | uri 1-1  
| | | @isURL [Optional] [Default= true]  
| | | mimeTypeCode 0-1  
| | | formatCode 0-1  
| | | encodingCode 0-1  
| | | characterSetCode 0-1

| **buyer 1-1**

| @logo [Optional]  
| @sender [Optional]  
| id 1-1  
| @numberingOrg [Optional]  
| additionalIdentifier 0-9  
| @numberingOrg [Optional]  
| @idQualifier [Optional]  
| legalName 0-1  
| dept 0-1  
| subDept 0-1  
| person 0-1  
| @email [Optional]  
| @phone [Optional]  
| @fax [Optional]  
| street 0-1  
| city 0-1  
| subCountry 0-1  
| country 0-1  
| postCode 0-1

| **supplier 1-1**

| @logo [Optional]  
| @sender [Optional]  
| id 1-1  
| @numberingOrg [Optional]  
| additionalIdentifier 0-9  
| @numberingOrg [Optional]  
| @idQualifier [Optional]  
| legalName 0-1  
| dept 0-1  
| subDept 0-1  
| person 0-1  
| @email [Optional]  
| @phone [Optional]  
| @fax [Optional]  
| street 0-1  
| city 0-1  
| subCountry 0-1  
| country 0-1  
| postCode 0-1

| **thirdParty 0-5**

| @VAT [Optional]  
| @role [Required]  
| @sender [Optional]  
| id 1-1  
| @numberingOrg [Optional]  
| legalName 0-1  
| dept 0-1  
| subDept 0-1  
| person 0-1  
| @email [Optional]  
| @phone [Optional]  
| @fax [Optional]

- | | | street 0-1
- | | | city 0-1
- | | | subCountry 0-1
- | | | country 0-1
- | | | postCode 0-1
- | | note 0-99
- | | @numberingOrg [Optional]
- | | @codeList [Optional]
- | | @noteLabel [Optional]

| **terms 0-1**

- | | **payment 0-5**
- | | @finDiscount [Optional]
- | | @finSurcharge [Optional]

- choose -

- | | | payTerm 1-1

- or -

- | | | payTermText 1-1

- end choose -

- | | | payMode 0-1

- | | **insPayment 0-5**

- | | @part [Required]

- choose -

- | | | payTerm 1-1

- or -

- | | | payTermText 1-1

- end choose -

- | | | payMode 0-1

- | | **trade 0-1**

- choose -

- | | | incoTermText 1-1

- or -

- | | | incoTerm 1-1

- end choose -

- | | | location 0-1

- | | | @LRI [Optional]

- | | **transInfo 0-5**

- | | @transReason [Optional]

- | | @progr [Optional]

- | | | transMode 1-1

- | | | carrier 0-1

- | | | deliveryPlace 0-1

- | | | grossWeight 0-1

- | | | @um [Required]

- | | | netWeight 0-1

- | | | @um [Required]

- | | | transMeans 0-1

- | | | transCondition 0-3

- | | | transConditionText 0-1

- | | | despatchPlace 0-1

- | | | despatchDate 0-1

- | | | @dateForm [Optional]

- | | | delEffectiveDate 0-1

- | | | @dateForm [Optional]

- | | **allowanceCharge 0-9**

- | | @um [Optional]

- | | @VAT [Optional]

- | | @minQty [Optional]

- | | @currency [Optional]

- | | @maxQty [Optional]

- choose -

- | | | AC\_category 1-1
- | | | - or -
- | | | AC\_categoryText 1-1
- | | | - end choose -
- | | | - choose -
- | | | AC\_percent 1-1
- | | | - or -
- | | | AC\_amount 1-1
- | | | - end choose -
- | | | **dtScheme 0-1**
- | | | | @taxType [Required]
- | | | | | taxCategory 0-1
- | | | | | taxRate 0-1
- | | | | | legalRef 0-1
- | | | | | @codeList [Required]
- | | | | | note 0-99
- | | | | | @numberingOrg [Optional]
- | | | | | @codeList [Optional]
- | | | | | @noteLabel [Optional]

| **texComInfo 0-1**

- | | @endUse [Optional] [Default= PR]
- | | @IC [Optional]
- | | @techSheet [Optional]
- | | | season 0-1
- | | | | @numberingOrg [Optional]
- | | | | @codeList [Optional]
- | | | | @listName [Optional]
- | | | | @listVersion [Optional]
- | | | brand 0-1
- | | | | @numberingOrg [Optional]
- | | | | @codeList [Optional]
- | | | | @listName [Optional]
- | | | | @listVersion [Optional]
- | | | productLine 0-1
- | | | | @numberingOrg [Optional]
- | | | | @codeList [Optional]
- | | | | @listName [Optional]
- | | | | @listVersion [Optional]
- | | | project 0-1
- | | | operationalCode 0-19
- | | | | @numberingOrg [Optional]
- | | | | @codeList [Optional]
- | | | | @listName [Optional]
- | | | | @listVersion [Optional]
- | | | | @codeQualifier [Optional]
- | | | deliveryDate 0-1
- | | | | @dateForm [Optional]
- | | | specDate 0-1
- | | | | @dateForm [Optional]
- | | | fabricWidth 0-1
- | | | | @um [Optional] [Default= CMT]
- | | | pieceLength 0-1
- | | | | @um [Optional] [Default= MTR]
- | | | **piecePack 0-1**
- | | | | - choose -
- | | | | | piecePackText 1-1
- | | | | - or -
- | | | | | piecelnnWrap1 1-1
- | | | | | piecelnnWrap2 0-1
- | | | | | pieceOutWrap 0-1

- end choose -

note 0-99  
| @numberingOrg [Optional]  
| @codeList [Optional]  
| @noteLabel [Optional]

### TXbody 1-1

#### TXitem 1-unbounded

@act [Required]

lineN 1-1

| @VAT [Optional]

#### refDoc 1-9

@docType [Required]

docID 1-2

| @numberingOrg [Optional]

docDate 0-1

| @dateForm [Optional]

season 0-1

| @numberingOrg [Optional]

| @codeList [Optional]

| @listName [Optional]

| @listVersion [Optional]

itemID 0-1

#### attachment 0-1

@uid [Optional]

fileName 0-1

| @numberingOrg [Optional]

binaryObject 0-1

| @format [Optional]

| @mime [Optional]

| @encoding [Optional]

| @characterSet [Optional]

#### externalReference 0-99

uri 1-1

| @isURL [Optional] [Default= true]

mimeCode 0-1

formatCode 0-1

encodingCode 0-1

characterSetCode 0-1

#### texCode 0-2

@numberingOrg [Optional]

art 1-1

| @numberingOrg [Optional]

| @codeList [Optional]

| @listName [Optional]

| @listVersion [Optional]

pattern 0-1

| @numberingOrg [Optional]

| @codeList [Optional]

| @listName [Optional]

| @listVersion [Optional]

color 0-1

| @numberingOrg [Optional]

| @codeList [Optional]

| @listName [Optional]

| @listVersion [Optional]

added 0-9

| @numberingOrg [Optional]

| @addType [Optional]

description 0-unbounded

| @ln [Optional]



**selvedge 0-1**  
 | selvedgeText 1-1  
 | selvedgeColor 0-1  
**fabricTreat 0-1**  
 | surfaceTreatment 0-1  
 | finishCycle 0-1  
 | oneLot 0-1  
 | metricMark 0-1  
 qty 0-2  
 @um [Required]  
 price 0-1  
 @um [Optional]  
 @priceQualifier [Optional] [Default= NET]  
 @currency [Optional]  
 comDiscount 0-1  
**thirdParty 0-1**  
 @VAT [Optional]  
 @role [Required]  
 @sender [Optional]  
 | id 1-1  
 | @numberingOrg [Optional]  
 | legalName 0-1  
 | dept 0-1  
 | subDept 0-1  
 | person 0-1  
 | @email [Optional]  
 | @phone [Optional]  
 | @fax [Optional]  
 | street 0-1  
 | city 0-1  
 | subCountry 0-1  
 | country 0-1  
 | postCode 0-1  
**texComInfo 0-1**  
 @endUse [Optional] [Default= PR]  
 @IC [Optional]  
 @techSheet [Optional]  
 | season 0-1  
 | @numberingOrg [Optional]  
 | @codeList [Optional]  
 | @listName [Optional]  
 | @listVersion [Optional]  
 | brand 0-1  
 | @numberingOrg [Optional]  
 | @codeList [Optional]  
 | @listName [Optional]  
 | @listVersion [Optional]  
 | productLine 0-1  
 | @numberingOrg [Optional]  
 | @codeList [Optional]  
 | @listName [Optional]  
 | @listVersion [Optional]  
 | project 0-1  
 | operationalCode 0-19  
 | @numberingOrg [Optional]  
 | @codeList [Optional]  
 | @listName [Optional]  
 | @listVersion [Optional]  
 | @codeQualifier [Optional]  
 | deliveryDate 0-1  
 | @dateForm [Optional]

```

| | | | specDate 0-1
| | | |   @dateForm [Optional]
| | | | fabricWidth 0-1
| | | |   @um [Optional] [Default= CMT]
| | | | pieceLength 0-1
| | | |   @um [Optional] [Default= MTR]
| | | | piecePack 0-1
| | | | - choose -
| | | |   | piecePackText 1-1
| | | | - or -
| | | |   | pieceInnWrap1 1-1
| | | |   | pieceInnWrap2 0-1
| | | |   | pieceOutWrap 0-1
| | | | - end choose -
| | | | note 0-99
| | | |   @numberingOrg [Optional]
| | | |   @codeList [Optional]
| | | |   @noteLabel [Optional]
| | | | dtScheme 0-1
| | | |   @taxType [Required]
| | | |   taxCategory 0-1
| | | |   taxRate 0-1
| | | |   legalRef 0-1
| | | |   @codeList [Required]
| | | |   note 0-99
| | | |   @numberingOrg [Optional]
| | | |   @codeList [Optional]
| | | |   @noteLabel [Optional]
| | | | note 0-99
| | | |   @numberingOrg [Optional]
| | | |   @codeList [Optional]
| | | |   @noteLabel [Optional]
| | totals 0-1
| |   totQty 0-1
| |   @um [Required]
| |   goodsAmount 1-1

```

## 2.2 Detailed description of document elements

Following tables show all elements (complex and simple) used in this document. Description includes: 1) element's information: xml tag, name, brief description, data type and syntax constraints; 2) information about use of the element in a particular position in the document: xpath and possible associated notes.

### 2.2.1 Complex elements (Aggregate Business Information Entities)

Complex elements are those elements whose content is composed of other elements (childs). Complex elements are alphabetically ordered.

<b>allowanceCharge</b>	Allowances and Charges related to an Order or a contract (XPath TEXOrdChange/terms/allowanceCharge) 0-9
<b>attachment</b>	an attached document. An attachment can refer to an external document or be included with the document being exchanged (XPath TEXOrdChange/TXheader/refDoc/attachment) 0-1 (XPath TEXOrdChange/TXbody/TXitem/refDoc/attachment) 0-1
<b>buyer</b>	details of the Buyer (party that buys the good or service that is object of the current collaborative process) - base type: Nad, (XPath TEXOrdChange/TXheader/buyer) 1-1
<b>dtScheme</b>	set of data usable to declare the duty or tax applied (XPath TEXOrdChange/TXbody/TXitem/dtScheme) 0-1 - note: <i>recommended alternative to the attribute @VAT</i> (XPath TEXOrdChange/terms/allowanceCharge/dtScheme) 0-1
<b>externalReference</b>	details about an external object, such as a document stored at a remote location (XPath TEXOrdChange/TXheader/refDoc/attachment/externalReference) 0-99 (XPath TEXOrdChange/TXbody/TXitem/refDoc/attachment/externalReference) 0-99
<b>fabricTreat</b>	information on the treatments and finishing of fabric (XPath TEXOrdChange/TXbody/TXitem/fabricTreat) 0-1
<b>insPayment</b>	payment details for payment by installments (XPath TEXOrdChange/terms/insPayment) 0-5 - note: <i>excluded the case of offers, this set of data is alternative to payment set and must be iterated for each payment installment</i>
<b>payment</b>	payment details for payment all in one (XPath TEXOrdChange/terms/payment) 0-5 - note: <i>excluded the case of offers, this set of data is alternative to insPayment, it can be iterated to specify alternative terms of payment (e.g.: 60 days or 30 days with 3% discount)</i>
<b>piecePack</b>	type of wrapping or packing of the fabric pieces (XPath TEXOrdChange/texComInfo/piecePack) 0-1 (XPath TEXOrdChange/TXbody/TXitem/texComInfo/piecePack) 0-1
<b>refDoc</b>	identification of a document and of an item thereof, to which the message makes reference (XPath TEXOrdChange/TXheader/refDoc) 1-9 (XPath TEXOrdChange/TXbody/TXitem/refDoc) 1-9 - note: <i>Use to link the line of the present document to the line of the order, use refDoc element; numberingOrg indicates the role that produced the document and such reference, customer or supplier (both might be reported through two instances of refDoc)</i>
<b>selvedge</b>	text and colour related to a fabric selvedge (XPath TEXOrdChange/TXbody/TXitem/selvedge) 0-1

<b>supplier</b>	details of the Supplier (party that supplies the good or service that is object of the current collaborative process) - base type: Nad, (XPath TEXOrdChange/TXheader/supplier) 1-1
<b>terms</b>	details of the commercial obligations for payment and delivery (XPath TEXOrdChange/terms) 0-1
<b>texCode</b>	full codification of the textile product (XPath TEXOrdChange/TXbody/TXitem/texCode) 0-2
<b>texComInfo</b>	miscellaneous trade information, that can be specified in a textile Order, referred either to the whole document or to the single item (XPath TEXOrdChange/texComInfo) 0-1 - note: <i>here must be specified those valid for the whole document</i> (XPath TEXOrdChange/TXbody/TXitem/texComInfo) 0-1 - note: <i>the Supplier can use this data group to confirm the Order terms or to modify them</i>
<b>thirdParty</b>	details of the Third Party, different from Buyer or Supplier - base type: Nad, (XPath TEXOrdChange/TXbody/TXitem/thirdParty) 0-1 (XPath TEXOrdChange/TXheader/thirdParty) 0-5
<b>totals</b>	monetary and quantity totals of the Order (XPath TEXOrdChange/totals) 0-1
<b>trade</b>	general terms of trade for the specified supply (XPath TEXOrdChange/terms/trade) 0-1
<b>transInfo</b>	details of transport: mode, carrier and delivery place (XPath TEXOrdChange/terms/transInfo) 0-5
<b>TXbody</b>	body of the document TEXTILES ORDER RESPONSE and CHANGE (XPath TEXOrdChange/TXbody) 1-1
<b>TXheader</b>	header of the TEXTILES ORDER RESPONSE and TEXTILES ORDER CHANGE (XPath TEXOrdChange/TXheader) 1-1 - note: <i>the attribute "logo" should be used only in conjunction with Buyer</i>
<b>TXitem</b>	line item of the message TEXTILE ORDER RESPONSE and TEXTILE ORDER CHANGE (XPath TEXOrdChange/TXbody/TXitem) 1-unbounded

## 2.2.2 Simple elements (Basic Business Information Entities)

Simple elements are those elements whose content is characterized by a data type plus a domain of possible values. Simple elements are alphabetically ordered.

AC_amount	amount of an Allowance or Charge - base type: decimal, fraction digits: 2, (XPath TEXOrdChange/terms/allowanceCharge/AC_amount) 1-1
AC_category	coded specification of an Allowance or Charge - base type: string, cod. table: T41 <a href="http://www.ebiz.enea.it/moda-ml/repository/codelist/draft/gc_T41.xml">http://www.ebiz.enea.it/moda-ml/repository/codelist/draft/gc_T41.xml</a> (XPath TEXOrdChange/terms/allowanceCharge/AC_category) 1-1
AC_categoryText	free text description of an Allowance or Charge - base type: string, max length: 250, (XPath TEXOrdChange/terms/allowanceCharge/AC_categoryText) 1-1

AC_percent	amount of an Allowance or Charge as a percentage - base type: decimal, max inclusive: 100, fraction digits: 2, (XPath TEXOrdChange/terms/allowanceCharge/AC_percent) 1-1
@act	status that the current line assigns to the line addressed in the reference document; if it is already canceled it maintains the status. - base type: string, cod. table: NT5 <a href="http://www.ebiz.enea.it/moda-ml/repository/codelist/draft/gc_NT5.xml">http://www.ebiz.enea.it/moda-ml/repository/codelist/draft/gc_NT5.xml</a> (XPath TEXOrdChange/TXbody/TXitem/@act) [Required]
added	additional code of the product (complementing the formers) - base type: string, max length: 80, (XPath TEXOrdChange/TXbody/TXitem/texCode/added) 0-9 - note: <i>here an additional codification (see table T44) can be specified</i>
additionalIdentifier	additional identification code of a Party, for example customs registries or others - base type: string, max length: 15, (XPath TEXOrdChange/TXheader/supplier/additionalIdentifier) 0-9 - note: <i>identifiers for example for exports, such as MID (Manufacturer Identification Code), EORI (E.O.R.I. - Economic Operator Registration and Identification)</i> (XPath TEXOrdChange/TXheader/buyer/additionalIdentifier) 0-9 - note: <i>identifiers for example for exports, such as MID (Manufacturer Identification Code), EORI (E.O.R.I. - Economic Operator Registration and Identification)</i>
@addType	qualifier of the additional coding of a product - base type: string, cod. table: T44 <a href="http://www.ebiz.enea.it/moda-ml/repository/codelist/draft/gc_T44.xml">http://www.ebiz.enea.it/moda-ml/repository/codelist/draft/gc_T44.xml</a> (XPath TEXOrdChange/TXbody/TXitem/texCode/added/@addType) [Optional] - note: <i>addType allows the clarification of the meaning of the added element content; it is strongly suggested to use it always.</i>
art	article number of the product - base type: string, max length: 80, (XPath TEXOrdChange/TXbody/TXitem/texCode/art) 1-1 - note: <i>can be used either for the base-article (excluding pattern/colour) or for the SKU</i>
binaryObject	a binary large object containing an attached document - base type: base64Binary, (XPath TEXOrdChange/TXheader/refDoc/attachment/binaryObject) 0-1 (XPath TEXOrdChange/TXbody/TXitem/refDoc/attachment/binaryObject) 0-1
brand	A brand name. - base type: string, (XPath TEXOrdChange/TXbody/TXitem/texComInfo/brand) 0-1 (XPath TEXOrdChange/texComInfo/brand) 0-1
carrier	identification of the transport carrier - base type: string, max length: 40, (XPath TEXOrdChange/terms/transInfo/carrier) 0-1
@characterSet	the character set of the binary object if the mime type is text - base type: normalizedString, (XPath TEXOrdChange/TXheader/refDoc/attachment/binaryObject/@characterSet) [Optional] (XPath TEXOrdChange/TXbody/TXitem/refDoc/attachment/binaryObject/@characterSet) [Optional]
characterSetCode	the character set of an external document - base type: normalizedString, (XPath TEXOrdChange/TXbody/TXitem/refDoc/attachment/externalReference/characterSetCode) 0-1

	(XPath TEXOrdChange/TXheader/refDoc/attachment/externalReference/characterSetCode) 0-1
city	name of the city (town, village) - base type: string, max length: 40, (XPath TEXOrdChange/TXbody/TXitem/thirdParty/city) 0-1 (XPath TEXOrdChange/TXheader/thirdParty/city) 0-1 (XPath TEXOrdChange/TXheader/supplier/city) 0-1 (XPath TEXOrdChange/TXheader/buyer/city) 0-1
@codeList	it specifies the URL where the list of codes used to make an instance of the element can be found - base type: string, max length: 255, (XPath TEXOrdChange/terms/allowanceCharge/dtScheme/note/@codeList) [Optional] - nota: <i>must be used to provide (URL) the list of codes used in "noteLabel"</i> (XPath TEXOrdChange/terms/allowanceCharge/dtScheme/legalRef/@codeList) [Required] (XPath TEXOrdChange/TXbody/TXitem/texComInfo/operationalCode/@codeList) [Optional] (XPath TEXOrdChange/texComInfo/season/@codeList) [Optional] (XPath TEXOrdChange/texComInfo/productLine/@codeList) [Optional] (XPath TEXOrdChange/texComInfo/brand/@codeList) [Optional] (XPath TEXOrdChange/TXbody/TXitem/texCode/color/@codeList) [Optional] - nota: <i>this attribute could be used as alternative to the others</i> (XPath TEXOrdChange/TXheader/note/@codeList) [Optional] - nota: <i>must be used to provide (URL) the list of codes used in "noteLabel"</i> (XPath TEXOrdChange/TXbody/TXitem/texComInfo/brand/@codeList) [Optional] (XPath TEXOrdChange/TXbody/TXitem/texComInfo/season/@codeList) [Optional] (XPath TEXOrdChange/TXbody/TXitem/dtScheme/legalRef/@codeList) [Required] (XPath TEXOrdChange/TXbody/TXitem/dtScheme/note/@codeList) [Optional] - nota: <i>must be used to provide (URL) the list of codes used in "noteLabel"</i> (XPath TEXOrdChange/TXheader/refDoc/season/@codeList) [Optional] (XPath TEXOrdChange/TXbody/TXitem/texComInfo/productLine/@codeList) [Optional] (XPath TEXOrdChange/texComInfo/note/@codeList) [Optional] - nota: <i>must be used to provide (URL) the list of codes used in "noteLabel"</i> (XPath TEXOrdChange/TXbody/TXitem/refDoc/season/@codeList) [Optional] (XPath TEXOrdChange/TXbody/TXitem/note/@codeList) [Optional] - nota: <i>must be used to provide (URL) the list of codes used in "noteLabel"</i> (XPath TEXOrdChange/TXbody/TXitem/texComInfo/note/@codeList) [Optional] - nota: <i>must be used to provide (URL) the list of codes used in "noteLabel"</i> (XPath TEXOrdChange/TXbody/TXitem/texCode/pattern/@codeList) [Optional] - nota: <i>this attribute should be ALTERNATIVE to the others</i> (XPath TEXOrdChange/TXbody/TXitem/texCode/art/@codeList) [Optional] - nota: <i>this attribute should be ALTERNATIVE to the others</i> (XPath TEXOrdChange/texComInfo/operationalCode/@codeList) [Optional]
@codeQualifier	operational code qualifier: it states if the code is related to a project, an event, an initiative, a sales channel, a management type (eg CITES), ..... - base type: string, cod. table: NT43 <a href="http://www.ebiz.enea.it/moda-ml/repository/codelist/draft/gc_NT43.xml">http://www.ebiz.enea.it/moda-ml/repository/codelist/draft/gc_NT43.xml</a> (XPath TEXOrdChange/TXbody/TXitem/texComInfo/operationalCode/@codeQualifier) [Optional] (XPath TEXOrdChange/texComInfo/operationalCode/@codeQualifier) [Optional]
color	colour number of the product, when not included in the model or fabric code - base type: string, max length: 15, (XPath TEXOrdChange/TXbody/TXitem/texCode/color) 0-1
comDiscount	percent discount applied to the related unit price or amount - base type: decimal, min inclusive: 0, max inclusive: 100, fraction digits: 2, (XPath TEXOrdChange/TXbody/TXitem/comDiscount) 0-1

country	<p>code of the nation</p> <p>- base type: string, cod. table: T10</p> <p><a href="http://www.ebiz.enea.it/moda-ml/repository/codelist/draft/gc_T10.xml">http://www.ebiz.enea.it/moda-ml/repository/codelist/draft/gc_T10.xml</a></p> <p>(XPath TEXOrdChange/TXheader/supplier/country) 0-1</p> <p>(XPath TEXOrdChange/TXbody/TXitem/thirdParty/country) 0-1</p> <p>(XPath TEXOrdChange/TXheader/buyer/country) 0-1</p> <p>(XPath TEXOrdChange/TXheader/thirdParty/country) 0-1</p>
@currency	<p>currency in which a specified monetary data is expressed</p> <p>- base type: string, cod. table: T9</p> <p><a href="http://www.ebiz.enea.it/moda-ml/repository/codelist/draft/gc_T9.xml">http://www.ebiz.enea.it/moda-ml/repository/codelist/draft/gc_T9.xml</a></p> <p>(XPath TEXOrdChange/TXbody/TXitem/price/@currency) [Optional]</p> <p>- nota: <i>Currency referred by the price.</i></p> <p>(XPath TEXOrdChange/terms/allowanceCharge/@currency) [Optional]</p>
@currencyUseQualifier	<p>qualification of another currency used in the document</p> <p>- base type: string, cod. table: NT19</p> <p><a href="http://www.ebiz.enea.it/moda-ml/repository/codelist/draft/gc_NT19.xml">http://www.ebiz.enea.it/moda-ml/repository/codelist/draft/gc_NT19.xml</a></p> <p>(XPath TEXOrdChange/TXheader/otherCurrency/@currencyUseQualifier) [Required]</p>
@dateForm	<p>format used for the date</p> <p>- base type: string, cod. table: NT29</p> <p><a href="http://www.ebiz.enea.it/moda-ml/repository/codelist/draft/gc_NT29.xml">http://www.ebiz.enea.it/moda-ml/repository/codelist/draft/gc_NT29.xml</a></p> <p>(XPath TEXOrdChange/TXbody/TXitem/refDoc/docDate/@dateForm) [Optional]</p> <p>(XPath TEXOrdChange/TXheader/refDoc/docDate/@dateForm) [Optional]</p> <p>(XPath TEXOrdChange/texComInfo/specDate/@dateForm) [Optional]</p> <p>(XPath TEXOrdChange/texComInfo/deliveryDate/@dateForm) [Optional]</p> <p>(XPath TEXOrdChange/TXheader/validityEnd/@dateForm) [Optional]</p> <p>(XPath TEXOrdChange/TXheader/msgDate/@dateForm) [Optional]</p> <p>(XPath TEXOrdChange/terms/transInfo/despatchDate/@dateForm) [Optional]</p> <p>(XPath TEXOrdChange/terms/transInfo/delEffectiveDate/@dateForm) [Optional]</p> <p>(XPath TEXOrdChange/TXbody/TXitem/texComInfo/specDate/@dateForm) [Optional]</p> <p>(XPath TEXOrdChange/TXbody/TXitem/texComInfo/deliveryDate/@dateForm) [Optional]</p>
delEffectiveDate	<p>effective date of delivery of goods (declared in Despatch), according to one of the patterns YYYY-MM-DD, YYYY-MM-DD:HH-MM or YYYY-WW.</p> <p>- base type: string,</p> <p>(XPath TEXOrdChange/terms/transInfo/delEffectiveDate) 0-1</p>
deliveryDate	<p>date of delivery of goods, requested or promised in the purchase process, according to one of the patterns YYYY-MM-DD, YYYY-MM-DD:HH-MM or YY-YY-WW.</p> <p>- base type: string,</p> <p>(XPath TEXOrdChange/texComInfo/deliveryDate) 0-1</p> <p>(XPath TEXOrdChange/TXbody/TXitem/texComInfo/deliveryDate) 0-1</p>
deliveryPlace	<p>place of delivery of goods, ultimate or related to a given leg</p> <p>- base type: string, max length: 250,</p> <p>(XPath TEXOrdChange/terms/transInfo/deliveryPlace) 0-1</p>
dept	<p>name or code of a contact department within a Party</p> <p>- base type: string, max length: 40,</p> <p>(XPath TEXOrdChange/TXheader/buyer/dept) 0-1</p> <p>(XPath TEXOrdChange/TXheader/supplier/dept) 0-1</p> <p>(XPath TEXOrdChange/TXheader/thirdParty/dept) 0-1</p> <p>(XPath TEXOrdChange/TXbody/TXitem/thirdParty/dept) 0-1</p>
description	<p>free text description. The content of the element must be unique, it might be translated and repeated into more languages (thus no more than one instance for each language).</p> <p>- base type: string, max length: 250,</p> <p>(XPath TEXOrdChange/TXbody/TXitem/texCode/description) 0-unbounded</p> <p>- note: <i>Product description</i></p>

despatchDate	date of despatch of goods, requested or promised in the purchase process, according to one of the patterns YYYY-MM-DD, YYYY-MM-DD:HH-MM or Y YYYY-WW. - base type: string, (XPath TEXOrdChange/terms/transInfo/despatchDate) 0-1
despatchPlace	place of despatch of goods, origin or related to a given leg - base type: string, max length: 250, (XPath TEXOrdChange/terms/transInfo/despatchPlace) 0-1
docDate	date of issue of the referenced document, according to one of the patterns Y YYYY-MM-DD, YYYY-MM-DD:HH-MM or YYYY-WW. - base type: string, (XPath TEXOrdChange/TXheader/refDoc/docDate) 0-1 (XPath TEXOrdChange/TXbody/TXitem/refDoc/docDate) 0-1
docID	identification number of the referenced document SINCE 2008-1 ITS USE I N THE HEADER IS DISCOURAGED (REPLACED BY msgID) - base type: string, max length: 80, (XPath TEXOrdChange/TXheader/docID) 0-1 (XPath TEXOrdChange/TXheader/refDoc/docID) 1-2 (XPath TEXOrdChange/TXbody/TXitem/refDoc/docID) 1-2
@docType	type or class to which the referenced document belongs - base type: string, cod. table: T21 <a href="http://www.ebiz.enea.it/moda-ml/repository/codelist/draft/gc_T21.xml">http://www.ebiz.enea.it/moda-ml/repository/codelist/draft/gc_T21.xml</a> (XPath TEXOrdChange/TXbody/TXitem/refDoc/@docType) [Required] (XPath TEXOrdChange/TXheader/refDoc/@docType) [Required]
@email	electronic mail address of the contact person within a Party - base type: string, max length: 250, (XPath TEXOrdChange/TXbody/TXitem/thirdParty/person/@email) [Optional] (XPath TEXOrdChange/TXheader/supplier/person/@email) [Optional] (XPath TEXOrdChange/TXheader/buyer/person/@email) [Optional] (XPath TEXOrdChange/TXheader/thirdParty/person/@email) [Optional]
@encoding	specifies the decoding algorithm of the binary object - base type: normalizedString, (XPath TEXOrdChange/TXheader/refDoc/attachment/binaryObject/@encoding) [Optional] (XPath TEXOrdChange/TXbody/TXitem/refDoc/attachment/binaryObject/@encoding) [Optional]
encodingCode	the encoding/decoding algorithm used with the external object - base type: normalizedString, (XPath TEXOrdChange/TXbody/TXitem/refDoc/attachment/externalReference/encodingCode) 0-1 (XPath TEXOrdChange/TXheader/refDoc/attachment/externalReference/encodingCode) 0-1
@endUse	specifies the final use of the fabric - base type: string, cod. table: NT4 <a href="http://www.ebiz.enea.it/moda-ml/repository/codelist/draft/gc_NT4.xml">http://www.ebiz.enea.it/moda-ml/repository/codelist/draft/gc_NT4.xml</a> (XPath TEXOrdChange/TXbody/TXitem/texComInfo/@endUse) [Optional] [Default= PR] (XPath TEXOrdChange/texComInfo/@endUse) [Optional] [Default= PR]
@exchangeRate	Currency exchange rate - base type: decimal, min inclusive: 0, (XPath TEXOrdChange/TXheader/otherCurrency/@exchangeRate) [Optional] - nota: Set the exchange rate of this currency to be applied on the message currency (msgCurrecy) to obtain the final value in this currency.
fabricWidth	width of the fabric as technical specification - base type: decimal, min inclusive: 0, fraction digits: 2, (XPath TEXOrdChange/texComInfo/fabricWidth) 0-1 (XPath TEXOrdChange/TXbody/TXitem/texComInfo/fabricWidth) 0-1



@fax	<p>fax number of the contact person within a Party</p> <p>- base type: string, max length: 35,  (XPath TEXOrdChange/TXheader/supplier/person/@fax) [Optional]  (XPath TEXOrdChange/TXbody/TXitem/thirdParty/person/@fax) [Optional]  (XPath TEXOrdChange/TXheader/buyer/person/@fax) [Optional]  (XPath TEXOrdChange/TXheader/thirdParty/person/@fax) [Optional]</p>
fileName	<p>unique identifier (name) of the file</p> <p>- base type: string, max length: 255,  (XPath TEXOrdChange/TXbody/TXitem/refDoc/attachment/fileName) 0-1  (XPath TEXOrdChange/TXheader/refDoc/attachment/fileName) 0-1</p>
@finDiscount	<p>financial discount rate applied for payment by the date specified</p> <p>- base type: decimal, min inclusive: 0, max inclusive: 100, fraction digits: 2,  (XPath TEXOrdChange/terms/payment/@finDiscount) [Optional]</p>
finishCycle	<p>process of finishing applied to the fabric</p> <p>- base type: string, max length: 40,  (XPath TEXOrdChange/TXbody/TXitem/fabricTreat/finishCycle) 0-1</p>
@finSurcharge	<p>financial surcharge rate applied for payment after the date specified</p> <p>- base type: decimal, min inclusive: 0, max inclusive: 100, fraction digits: 2,  (XPath TEXOrdChange/terms/payment/@finSurcharge) [Optional]</p>
@format	<p>the format of the binary content</p> <p>- base type: string,  (XPath TEXOrdChange/TXheader/refDoc/attachment/binaryObject/@format) [Optional]  (XPath TEXOrdChange/TXbody/TXitem/refDoc/attachment/binaryObject/@format) [Optional]</p>
formatCode	<p>the format of the external object</p> <p>- base type: normalizedString,  (XPath TEXOrdChange/TXbody/TXitem/refDoc/attachment/externalReference/formatCode) 0-1  (XPath TEXOrdChange/TXheader/refDoc/attachment/externalReference/formatCode) 0-1</p>
goodsAmount	<p>total monetary value of the goods and services considered in the message</p> <p>- base type: decimal, min inclusive: 0, fraction digits: 2,  (XPath TEXOrdChange/totals/goodsAmount) 1-1</p>
grossWeight	<p>the gross weight, declared for transport or customs purpose</p> <p>- base type: decimal, min inclusive: 0, fraction digits: 2,  (XPath TEXOrdChange/terms/transInfo/grossWeight) 0-1</p>
@IC	<p>specifies if the "illustrated confirmation" is needed</p> <p>- base type: boolean,  (XPath TEXOrdChange/TXbody/TXitem/texComInfo/@IC) [Optional]  (XPath TEXOrdChange/texComInfo/@IC) [Optional]</p>
id	<p>primary identification code of a Party; it is recommended the format: nation code (ISO 3166) + VAT identification number (11 crt), with the qualifier "numberingOrg"= MF</p> <p>- base type: string, max length: 15,  (XPath TEXOrdChange/TXheader/thirdParty/id) 1-1  (XPath TEXOrdChange/TXbody/TXitem/thirdParty/id) 1-1  (XPath TEXOrdChange/TXheader/supplier/id) 1-1  (XPath TEXOrdChange/TXheader/buyer/id) 1-1</p>
@idQualifier	<p>Qualification of the identifier.</p> <p>- base type: string,  (XPath TEXOrdChange/TXheader/buyer/additionalIdentifier/@idQualifier) [Optional]  - nota: <i>this attribute should be used when the numberingOrg attribute is not enough to declare the type of identifier</i></p>

	<p>(XPath  TEXOrdChange/TXheader/supplier/additionalIdentifier/@idQualifier) [Optional]</p> <p>- nota: <i>this attribute should be used when the numberingOrg attribute is not enough to declare the type of identifier</i></p>
incoTerm	<p>specification of the terms of trade (INCOTERMS)</p> <p>- base type: string, cod. table: T3</p> <p><a href="http://www.ebiz.enea.it/moda-ml/repository/codelist/draft/gc_T3.xml">http://www.ebiz.enea.it/moda-ml/repository/codelist/draft/gc_T3.xml</a></p> <p>(XPath TEXOrdChange/terms/trade/incoTerm) 1-1</p>
incoTermText	<p>free text specifying the terms of trade (incoterm, location)</p> <p>- base type: string, max length: 250,</p> <p>(XPath TEXOrdChange/terms/trade/incoTermText) 1-1</p>
@isURL	<p>it indicates if the referred element is an URL (true) or not (false)</p> <p>- base type: boolean,</p> <p>(XPath TEXOrdChange/TXbody/TXitem/refDoc/attachment/externalReference/uri/@isURL) [Optional] [Default= true]</p> <p>- nota: <i>usage of URLs is recommended</i></p> <p>(XPath TEXOrdChange/TXheader/refDoc/attachment/externalReference/uri/@isURL) [Optional] [Default= true]</p> <p>- nota: <i>usage of URLs is recommended</i></p>
itemID	<p>number of the line/item of the referenced document</p> <p>- base type: string, max length: 6,</p> <p>(XPath TEXOrdChange/TXbody/TXitem/refDoc/itemID) 0-1</p> <p>(XPath TEXOrdChange/TXheader/refDoc/itemID) 0-1</p>
legalName	<p>legal name of a Party</p> <p>- base type: string, max length: 250,</p> <p>(XPath TEXOrdChange/TXbody/TXitem/thirdParty/legalName) 0-1</p> <p>(XPath TEXOrdChange/TXheader/thirdParty/legalName) 0-1</p> <p>(XPath TEXOrdChange/TXheader/supplier/legalName) 0-1</p> <p>(XPath TEXOrdChange/TXheader/buyer/legalName) 0-1</p>
legalRef	<p>legal reference of the duty or tax or fee category</p> <p>- base type: string,</p> <p>(XPath TEXOrdChange/TXbody/TXitem/dtScheme/legalRef) 0-1</p> <p>(XPath TEXOrdChange/terms/allowanceCharge/dtScheme/legalRef) 0-1</p>
lineN	<p>number of the line item of the present message (xml document); it is set by the role that produces the document. Usually it is a progressive number, but not always.</p> <p>- base type: positiveInteger, min inclusive: 1, max inclusive: 9999,</p> <p>(XPath TEXOrdChange/TXbody/TXitem/lineN) 1-1</p>
@listName	<p>the name of the list of codes used to make an instance of the element (it might be thought as descriptive element, i.e. 'fabric printing technologies', or not, i.e. "T264")</p> <p>- base type: string, max length: 40,</p> <p>(XPath TEXOrdChange/TXbody/TXitem/texCode/color/@listName) [Optional]</p> <p>- nota: <i>this attribute should always be used coupled with "numberingOrg"</i></p> <p>(XPath TEXOrdChange/texComInfo/brand/@listName) [Optional]</p> <p>(XPath TEXOrdChange/TXbody/TXitem/refDoc/season/@listName) [Optional]</p> <p>(XPath TEXOrdChange/texComInfo/productLine/@listName) [Optional]</p> <p>(XPath TEXOrdChange/texComInfo/season/@listName) [Optional]</p> <p>(XPath TEXOrdChange/TXbody/TXitem/texCode/pattern/@listName) [Optional]</p> <p>- nota: <i>this attribute should always be used coupled with "numberingOrg"</i></p> <p>(XPath TEXOrdChange/TXbody/TXitem/texComInfo/productLine/@listName) [Optional]</p> <p>(XPath TEXOrdChange/TXheader/refDoc/season/@listName) [Optional]</p> <p>(XPath TEXOrdChange/TXbody/TXitem/texComInfo/season/@listName) [Optional]</p> <p>(XPath TEXOrdChange/TXbody/TXitem/texComInfo/brand/@listName) [Optional]</p> <p>(XPath TEXOrdChange/TXbody/TXitem/texCode/art/@listName) [Optional]</p> <p>- nota: <i>this attribute should always be used coupled with "numberingOrg"</i></p> <p>(XPath TEXOrdChange/texComInfo/operationalCode/@listName) [Optional]</p>

	(XPath TEXOrdChange/TXbody/TXitem/texComInfo/operationalCode/@listName) [Optional]
@listVersion	it specifies the version of the list of codes used to make an instance of the element - base type: string, max length: 6, (XPath TEXOrdChange/texComInfo/productLine/@listVersion) [Optional] (XPath TEXOrdChange/TXbody/TXitem/texCode/pattern/@listVersion) [Optional] - nota: <i>this attribute should always be used coupled with “numberingOrg” and “listName”</i> (XPath TEXOrdChange/texComInfo/operationalCode/@listVersion) [Optional] (XPath TEXOrdChange/TXbody/TXitem/refDoc/season/@listVersion) [Optional] (XPath TEXOrdChange/TXbody/TXitem/texCode/color/@listVersion) [Optional] - nota: <i>this attribute should always be used coupled with “numberingOrg” and “listName”</i> (XPath TEXOrdChange/TXheader/refDoc/season/@listVersion) [Optional] (XPath TEXOrdChange/TXbody/TXitem/texComInfo/productLine/@listVersion) [Optional] (XPath TEXOrdChange/TXbody/TXitem/texCode/art/@listVersion) [Optional] - nota: <i>this attribute should always be used coupled with “numberingOrg” and “listName”</i> (XPath TEXOrdChange/TXbody/TXitem/texComInfo/season/@listVersion) [Optional] (XPath TEXOrdChange/texComInfo/brand/@listVersion) [Optional] (XPath TEXOrdChange/TXbody/TXitem/texComInfo/brand/@listVersion) [Optional] (XPath TEXOrdChange/TXbody/TXitem/texComInfo/operationalCode/@listVersion) [Optional] (XPath TEXOrdChange/texComInfo/season/@listVersion) [Optional]
@ln	Language code. - base type: string, (XPath TEXOrdChange/TXbody/TXitem/texCode/description/@ln) [Optional]
location	specification of a location - base type: string, max length: 40, (XPath TEXOrdChange/terms/trade/location) 0-1 - note: <i>place to which the INCOTERM applies</i>
@logo	company logo (URL of the image jpeg or gif). It is recommended that the width of the image does not exceed 640 pixel. - base type: string, max length: 255, (XPath TEXOrdChange/TXheader/supplier/@logo) [Optional] (XPath TEXOrdChange/TXheader/buyer/@logo) [Optional]
@LRI	attribute usable to format a string according to a customized User rule (local rule) - base type: string, cod. table: NT3 <a href="http://www.ebiz.enea.it/moda-ml/repository/codelist/draft/gc_NT3.xml">http://www.ebiz.enea.it/moda-ml/repository/codelist/draft/gc_NT3.xml</a> (XPath TEXOrdChange/terms/trade/location/@LRI) [Optional]
@maxQty	maximum product quantity - base type: decimal, min inclusive: 0, fraction digits: 2, (XPath TEXOrdChange/terms/allowanceCharge/@maxQty) [Optional] - nota: <i>maximum quantity of product for the application of this allowance or charge</i>
metricMark	specifies if the fabric piece must have the metric marks - base type: boolean, (XPath TEXOrdChange/TXbody/TXitem/fabricTreat/metricMark) 0-1
@mime	the mime type of the binary object - base type: normalizedString, (XPath TEXOrdChange/TXheader/refDoc/attachment/binaryObject/@mime) [Optional] (XPath TEXOrdChange/TXbody/TXitem/refDoc/attachment/binaryObject/@mime) [Optional]

mimeCode	mime type of the external object - base type: normalizedString, (XPath TEXOrdChange/TXheader/refDoc/attachment/ externalReference/mimeCode) 0-1 (XPath TEXOrdChange/TXbody/TXitem/refDoc/attachment/ externalReference/mimeCode) 0-1
@minQty	minimum product quantity - base type: decimal, min inclusive: 0, fraction digits: 2, (XPath TEXOrdChange/terms/allowanceCharge/@minQty) [Optional] - nota: <i>minimum quantity of product for the application of this allowance or charge</i>
msgCurrency	currency used to express the monetary amounts of the message - base type: string, cod. table: T9 <a href="http://www.ebiz.enea.it/moda-ml/repository/codelist/draft/gc_T9.xml">http://www.ebiz.enea.it/moda-ml/repository/codelist/draft/gc_T9.xml</a> (XPath TEXOrdChange/TXheader/msgCurrency) 0-1
msgDate	date of issue of the present message (xml document), according to one of the patterns YYYY-MM-DD, YYYY-MM-DD:HH-MM or YYYY-WW. - base type: string, (XPath TEXOrdChange/TXheader/msgDate) 1-1
@msgfunction	function performed by the present message with regards to the transmission - base type: string, cod. table: NT18 <a href="http://www.ebiz.enea.it/moda-ml/repository/codelist/draft/gc_NT18.xml">http://www.ebiz.enea.it/moda-ml/repository/codelist/draft/gc_NT18.xml</a> (XPath TEXOrdChange/@msgfunction) [Optional] [Default= OR]
msgID	key identifier of the business document in the information system of the issuing Party. In case of more despatches of the same business document, it is unchanged. - base type: string, max length: 35, (XPath TEXOrdChange/TXheader/msgID) 0-1
msgN	identification number given to the message (xml document) by its issuer. In case of more despatches of the same business document, it changes. - base type: string, max length: 35, (XPath TEXOrdChange/TXheader/msgN) 1-1
netWeight	the net weight declared for transport or customs purpose - base type: decimal, min inclusive: 0, fraction digits: 2, (XPath TEXOrdChange/terms/transInfo/netWeight) 0-1
note	free text or structured (computer processing) note. For note structuring use the attributes "noteLabel" and "codelist" - base type: string, max length: 350, (XPath TEXOrdChange/TXbody/TXitem/dtScheme/note) 0-99 (XPath TEXOrdChange/TXheader/note) 0-99 (XPath TEXOrdChange/TXbody/TXitem/texComInfo/note) 0-99 (XPath TEXOrdChange/TXbody/TXitem/note) 0-99 (XPath TEXOrdChange/texComInfo/note) 0-99 (XPath TEXOrdChange/terms/allowanceCharge/dtScheme/note) 0-99
@noteLabel	subject qualifier of a note - base type: string, max length: 35, (XPath TEXOrdChange/TXbody/TXitem/note/@noteLabel) [Optional] - nota: <i>must be used to qualify the subject of the note</i> (XPath TEXOrdChange/TXheader/note/@noteLabel) [Optional] - nota: <i>must be used to qualify the subject of the note</i> (XPath TEXOrdChange/terms/allowanceCharge/dtScheme/note/@noteLabel) [Optional] - nota: <i>must be used to qualify the subject of the note</i> (XPath TEXOrdChange/TXbody/TXitem/texComInfo/note/@noteLabel) [Optional] - nota: <i>must be used to qualify the subject of the note</i> (XPath TEXOrdChange/TXbody/TXitem/dtScheme/note/@noteLabel) [Optional] - nota: <i>must be used to qualify the subject of the note</i>

	<p>(XPath TEXOrdChange/texComInfo/note/@noteLabel) [Optional]  - nota: <i>must be used to qualify the subject of the note</i></p>
@numberingOrg	<p>code specifying the organisation who has created or owns the coding or numbering system  - base type: string, cod. table: NT6  <a href="http://www.ebiz.enea.it/moda-ml/repository/codelist/draft/gc_NT6.xml">http://www.ebiz.enea.it/moda-ml/repository/codelist/draft/gc_NT6.xml</a>  (XPath TEXOrdChange/TXbody/TXitem/dtScheme/note/@numberingOrg) [Optional]  (XPath  TEXOrdChange/TXbody/TXitem/texComInfo/operationalCode/@numberingOrg) [Optional]  (XPath TEXOrdChange/TXbody/TXitem/texComInfo/season/@numberingOrg) [Optional]  (XPath TEXOrdChange/TXbody/TXitem/texComInfo/brand/@numberingOrg) [Optional]  (XPath TEXOrdChange/TXbody/TXitem/thirdParty/id/@numberingOrg) [Optional]  (XPath TEXOrdChange/TXbody/TXitem/texComInfo/productLine/@numberingOrg) [Optional]  (XPath TEXOrdChange/TXbody/TXitem/texCode/@numberingOrg) [Optional]  (XPath TEXOrdChange/TXbody/TXitem/note/@numberingOrg) [Optional]  (XPath TEXOrdChange/TXbody/TXitem/texComInfo/note/@numberingOrg) [Optional]  (XPath TEXOrdChange/TXbody/TXitem/texCode/art/@numberingOrg) [Optional]  - nota: <i>this attribute should be used either single or coupled with "listName" and "listVersion"</i>  (XPath TEXOrdChange/TXbody/TXitem/texCode/added/@numberingOrg) [Optional]  (XPath TEXOrdChange/TXbody/TXitem/texCode/color/@numberingOrg) [Optional]  - nota: <i>this attribute should be used either single or coupled with "listName" and "listVersion"</i>  (XPath TEXOrdChange/TXbody/TXitem/texCode/pattern/@numberingOrg) [Optional]  - nota: <i>this attribute should be used either single or coupled with "listName" and "listVersion"</i>  (XPath  TEXOrdChange/TXheader/supplier/additionalIdentifier/@numberingOrg) [Optional]  - nota: <i>here the issuer of the identifier must be specified</i>  (XPath TEXOrdChange/TXheader/thirdParty/id/@numberingOrg) [Optional]  (XPath TEXOrdChange/TXheader/buyer/additionalIdentifier/@numberingOrg) [Optional]  - nota: <i>here the issuer of the identifier must be specified</i>  (XPath TEXOrdChange/TXheader/supplier/id/@numberingOrg) [Optional]  (XPath TEXOrdChange/texComInfo/season/@numberingOrg) [Optional]  (XPath TEXOrdChange/texComInfo/brand/@numberingOrg) [Optional]  (XPath TEXOrdChange/texComInfo/productLine/@numberingOrg) [Optional]  (XPath TEXOrdChange/TXheader/note/@numberingOrg) [Optional]  (XPath TEXOrdChange/texComInfo/operationalCode/@numberingOrg) [Optional]  (XPath TEXOrdChange/TXheader/buyer/id/@numberingOrg) [Optional]  (XPath TEXOrdChange/TXbody/TXitem/refDoc/season/@numberingOrg) [Optional]  (XPath TEXOrdChange/TXheader/refDoc/docID/@numberingOrg) [Optional]  - nota: <i>here can be specified whose document numbering is used (e.g.: Client, Supplier, ..)</i>  (XPath TEXOrdChange/terms/allowanceCharge/dtScheme/note/@numberingOrg) [Optional]  (XPath TEXOrdChange/TXbody/TXitem/refDoc/attachment/fileName/@numberingOrg) [Optional]  (XPath TEXOrdChange/TXheader/docID/@numberingOrg) [Optional]  - nota: <i>here can be specified whose document numbering is used (e.g.: Client, Supplier, ..)</i>  (XPath TEXOrdChange/texComInfo/note/@numberingOrg) [Optional]  (XPath TEXOrdChange/TXheader/refDoc/attachment/fileName/@numberingOrg) [Optional]  (XPath TEXOrdChange/TXheader/refDoc/season/@numberingOrg) [Optional]  (XPath TEXOrdChange/TXbody/TXitem/refDoc/docID/@numberingOrg) [Optional]  - nota: <i>here can be specified whose document numbering is used (e.g.: Client, Supplier, ..)</i></p>

oneLot	specifies if the order line must be supplied with one production lot - base type: boolean, (XPath TEXOrdChange/TXbody/TXitem/fabricTreat/oneLot) 0-1
operationalCode	operational code: it is the code of a project, an event, an initiative, a sales channel, a management type (eg CITES), ... the document, or product, is connected with. - base type: string, (XPath TEXOrdChange/texComInfo/operationalCode) 0-19 (XPath TEXOrdChange/TXbody/TXitem/texComInfo/operationalCode) 0-19
otherCurrency	other currency used in the document - base type: string, cod. table: T9 <a href="http://www.ebiz.enea.it/moda-ml/repository/codelist/draft/gc_T9.xml">http://www.ebiz.enea.it/moda-ml/repository/codelist/draft/gc_T9.xml</a> (XPath TEXOrdChange/TXheader/otherCurrency) 0-9
@part	percent fraction of a total payment - base type: decimal, min inclusive: 1, max inclusive: 99, fraction digits: 2, (XPath TEXOrdChange/terms/insPayment/@part) [Required] - nota: <i>here the % value of each installment must be indicated</i>
pattern	pattern/design number of the product, when not included in the article code - base type: string, max length: 15, (XPath TEXOrdChange/TXbody/TXitem/texCode/pattern) 0-1
payMode	way or means of payment - base type: string, cod. table: T2 <a href="http://www.ebiz.enea.it/moda-ml/repository/codelist/draft/gc_T2.xml">http://www.ebiz.enea.it/moda-ml/repository/codelist/draft/gc_T2.xml</a> (XPath TEXOrdChange/terms/payment/payMode) 0-1 (XPath TEXOrdChange/terms/insPayment/payMode) 0-1
payTerm	code specifying the terms or time by which the payment must be done - base type: string, cod. table: T1 <a href="http://www.ebiz.enea.it/moda-ml/repository/codelist/draft/gc_T1.xml">http://www.ebiz.enea.it/moda-ml/repository/codelist/draft/gc_T1.xml</a> (XPath TEXOrdChange/terms/insPayment/payTerm) 1-1 (XPath TEXOrdChange/terms/payment/payTerm) 1-1
payTermText	free text specifying the terms by which the payment must be done (time/mode or means) - base type: string, max length: 250, (XPath TEXOrdChange/terms/insPayment/payTermText) 1-1 (XPath TEXOrdChange/terms/payment/payTermText) 1-1
person	name of the contact person within a Party - base type: string, max length: 40, (XPath TEXOrdChange/TXheader/supplier/person) 0-1 (XPath TEXOrdChange/TXheader/buyer/person) 0-1 (XPath TEXOrdChange/TXheader/thirdParty/person) 0-1 (XPath TEXOrdChange/TXbody/TXitem/thirdParty/person) 0-1
@phone	phone number of the contact person within a Party - base type: string, max length: 35, (XPath TEXOrdChange/TXheader/supplier/person/@phone) [Optional] (XPath TEXOrdChange/TXbody/TXitem/thirdParty/person/@phone) [Optional] (XPath TEXOrdChange/TXheader/buyer/person/@phone) [Optional] (XPath TEXOrdChange/TXheader/thirdParty/person/@phone) [Optional]
piecelnnWrap1	code specifying the type of inner wrapping/packing used for the fabric piece - base type: string, cod. table: T4 <a href="http://www.ebiz.enea.it/moda-ml/repository/codelist/draft/gc_T4.xml">http://www.ebiz.enea.it/moda-ml/repository/codelist/draft/gc_T4.xml</a> (XPath TEXOrdChange/TXbody/TXitem/texComInfo/piecePack/piecelnnWrap1) 1-1 (XPath TEXOrdChange/texComInfo/piecePack/piecelnnWrap1) 1-1
piecelnnWrap2	code sub-specifying the type of inner wrapping/packing used for the fabric piece - base type: string, cod. table: T5 <a href="http://www.ebiz.enea.it/moda-ml/repository/codelist/draft/gc_T5.xml">http://www.ebiz.enea.it/moda-ml/repository/codelist/draft/gc_T5.xml</a> (XPath TEXOrdChange/texComInfo/piecePack/piecelnnWrap2) 0-1



	(XPath TEXOrdChange/TXbody/TXitem/texComInfo/piecePack/pieceInnWrap2) 0-1
pieceLength	length of the piece - base type: decimal, min inclusive: 0, fraction digits: 2, (XPath TEXOrdChange/texComInfo/pieceLength) 0-1 (XPath TEXOrdChange/TXbody/TXitem/texComInfo/pieceLength) 0-1
pieceOutWrap	code specifying the type of outer wrapping or packing used for the fabric piece - base type: string, cod. table: T6 <a href="http://www.ebiz.enea.it/moda-ml/repository/codelist/draft/gc_T6.xml">http://www.ebiz.enea.it/moda-ml/repository/codelist/draft/gc_T6.xml</a> (XPath TEXOrdChange/TXbody/TXitem/texComInfo/piecePack/pieceOutWrap) 0-1 (XPath TEXOrdChange/texComInfo/piecePack/pieceOutWrap) 0-1
piecePackText	free text specifying the type of wrapping or packing used for the fabric piece - base type: string, max length: 250, (XPath TEXOrdChange/TXbody/TXitem/texComInfo/piecePack/piecePackText) 1-1 (XPath TEXOrdChange/texComInfo/piecePack/piecePackText) 1-1
postCode	code defining the postal zone - base type: string, max length: 10, (XPath TEXOrdChange/TXheader/thirdParty/postCode) 0-1 (XPath TEXOrdChange/TXheader/buyer/postCode) 0-1 (XPath TEXOrdChange/TXheader/supplier/postCode) 0-1 (XPath TEXOrdChange/TXbody/TXitem/thirdParty/postCode) 0-1
price	unit price of the article, object or service specified - base type: decimal, min inclusive: 0, fraction digits: 4, (XPath TEXOrdChange/TXbody/TXitem/price) 0-1
@priceQualifier	type of price with reference to discount and taxes - base type: string, cod. table: NT20 <a href="http://www.ebiz.enea.it/moda-ml/repository/codelist/draft/gc_NT20.xml">http://www.ebiz.enea.it/moda-ml/repository/codelist/draft/gc_NT20.xml</a> (XPath TEXOrdChange/TXbody/TXitem/price/@priceQualifier) [Optional] [Default= NET]
productLine	the product line name of a fashion product. - base type: string, (XPath TEXOrdChange/texComInfo/productLine) 0-1 (XPath TEXOrdChange/TXbody/TXitem/texComInfo/productLine) 0-1
@progr	progressive number in the sequence - base type: positiveInteger, min inclusive: 1, (XPath TEXOrdChange/terms/transInfo/@progr) [Optional] - nota: <i>Indicates the position of the leg in a sequence of transport legs.</i>
project	code used to assign the items ordered (fabric pieces, accessories, garments ...) to a specific project of the Client - base type: string, max length: 40, (XPath TEXOrdChange/texComInfo/project) 0-1 (XPath TEXOrdChange/TXbody/TXitem/texComInfo/project) 0-1
qty	net quantity of the article or object correlated, qualified by the function of the document (ordering, delivering, ..) and by the context - base type: decimal, min inclusive: 0, fraction digits: 2, (XPath TEXOrdChange/TXbody/TXitem/qty) 0-2 <hr/> <b>AAAA-WARNING! - text not AVAILABLE n. 245 - In=en</b>
@role	Third Party role qualifier - base type: string, cod. table: NT2 <a href="http://www.ebiz.enea.it/moda-ml/repository/codelist/draft/gc_NT2.xml">http://www.ebiz.enea.it/moda-ml/repository/codelist/draft/gc_NT2.xml</a> (XPath TEXOrdChange/TXbody/TXitem/thirdParty/@role) [Required] (XPath TEXOrdChange/TXheader/thirdParty/@role) [Required]
season	sale season; defined as: season (1 crt) + year (4 crt) - season: S/S=1 A/W=2 Spring=3 Summer=4 Autumn=5 Winter=6: for more than four seasons use

	<p>alphabetic sequence: 1st season=A 2nd season=B etc.etc.</p> <p>- base type: string, max length: 15,  (XPath TEXOrdChange/TXbody/TXitem/texComInfo/season) 0-1  (XPath TEXOrdChange/TXbody/TXitem/refDoc/season) 0-1</p> <p>- note: <i>here indicates the season to which the referenced document belongs</i>  (XPath TEXOrdChange/texComInfo/season) 0-1  (XPath TEXOrdChange/TXheader/refDoc/season) 0-1</p> <p>- note: <i>here indicates the season to which the referenced document belongs</i></p>
selvedgeColor	<p>colour of the text displayed on the selvedge</p> <p>- base type: string, max length: 15,  (XPath TEXOrdChange/TXbody/TXitem/selvedge/selvedgeColor) 0-1</p>
selvedgeText	<p>text to be written on the selvedge</p> <p>- base type: string, max length: 300,  (XPath TEXOrdChange/TXbody/TXitem/selvedge/selvedgeText) 1-1</p>
@sender	<p>qualifier that specifies the Party issuing of the document</p> <p>- base type: boolean,  (XPath TEXOrdChange/TXheader/supplier/@sender) [Optional]</p> <p>- nota: <i>This attribute is mandatory when the STYLESHEET must be used</i>  (XPath TEXOrdChange/TXheader/buyer/@sender) [Optional]</p> <p>- nota: <i>This attribute is mandatory when the STYLESHEET must be used</i>  (XPath TEXOrdChange/TXheader/thirdParty/@sender) [Optional]</p> <p>- nota: <i>This attribute is mandatory when the STYLESHEET must be used</i>  (XPath TEXOrdChange/TXbody/TXitem/thirdParty/@sender) [Optional]</p> <p>- nota: <i>This attribute is mandatory when the STYLESHEET must be used</i></p>
specDate	<p>date by which the referenced blanket order must receive full product specific ations (e.g.: colour), according to one of the patterns YYYY-MM-DD, YYYY-MM-DD:HH-MM or YYYY-WW.</p> <p>- base type: string,  (XPath TEXOrdChange/texComInfo/specDate) 0-1  (XPath TEXOrdChange/TXbody/TXitem/texComInfo/specDate) 0-1</p>
street	<p>street and building number identifying a location</p> <p>- base type: string, max length: 80,  (XPath TEXOrdChange/TXheader/buyer/street) 0-1  (XPath TEXOrdChange/TXbody/TXitem/thirdParty/street) 0-1  (XPath TEXOrdChange/TXheader/thirdParty/street) 0-1  (XPath TEXOrdChange/TXheader/supplier/street) 0-1</p>
subCountry	<p>short name or code of the sub-country entity</p> <p>- base type: string, max length: 9,  (XPath TEXOrdChange/TXheader/buyer/subCountry) 0-1  (XPath TEXOrdChange/TXheader/supplier/subCountry) 0-1  (XPath TEXOrdChange/TXheader/thirdParty/subCountry) 0-1  (XPath TEXOrdChange/TXbody/TXitem/thirdParty/subCountry) 0-1</p>
subDept	<p>name or code of a contact department within a Party</p> <p>- base type: string, max length: 40,  (XPath TEXOrdChange/TXheader/supplier/subDept) 0-1  (XPath TEXOrdChange/TXheader/thirdParty/subDept) 0-1  (XPath TEXOrdChange/TXheader/buyer/subDept) 0-1  (XPath TEXOrdChange/TXbody/TXitem/thirdParty/subDept) 0-1</p>
surfaceTreatment	<p>surface treatment applied to the fabric, as end result</p> <p>- base type: string, max length: 40,  (XPath TEXOrdChange/TXbody/TXitem/fabricTreat/surfaceTreatment) 0-1</p>
taxCategory	<p>duty or tax or fee category</p> <p>- base type: string, cod. table: T62  <a href="http://www.ebiz.enea.it/moda-ml/repository/codelist/draft/gc_T62.xml">http://www.ebiz.enea.it/moda-ml/repository/codelist/draft/gc_T62.xml</a>  (XPath TEXOrdChange/TXbody/TXitem/dtScheme/taxCategory) 0-1  (XPath TEXOrdChange/terms/allowanceCharge/dtScheme/taxCategory) 0-1</p>



taxRate	duty or tax or fee percent rate - base type: string, (XPath TEXOrdChange/terms/allowanceCharge/dtScheme/taxRate) 0-1 (XPath TEXOrdChange/TXbody/TXitem/dtScheme/taxRate) 0-1
@taxType	duty or tax or fee type - base type: string, cod. table: T61 <a href="http://www.ebiz.enea.it/moda-ml/repository/codelist/draft/gc_T61.xml">http://www.ebiz.enea.it/moda-ml/repository/codelist/draft/gc_T61.xml</a> (XPath TEXOrdChange/TXbody/TXitem/dtScheme/@taxType) [Required] (XPath TEXOrdChange/terms/allowanceCharge/dtScheme/@taxType) [Required]
@techSheet	specifies if the " technical characteristics of fabric" document must provided - base type: boolean, (XPath TEXOrdChange/texComInfo/@techSheet) [Optional] (XPath TEXOrdChange/TXbody/TXitem/texComInfo/@techSheet) [Optional]
totQty	total quantity of the articles related to the whole document - base type: decimal, min inclusive: 0, fraction digits: 2, (XPath TEXOrdChange/totals/totQty) 0-1
@TOtype	type of Order - base type: string, cod. table: NT1 <a href="http://www.ebiz.enea.it/moda-ml/repository/codelist/draft/gc_NT1.xml">http://www.ebiz.enea.it/moda-ml/repository/codelist/draft/gc_NT1.xml</a> (XPath TEXOrdChange/@TOtype) [Optional]
transCondition	special condition of transport or special service requested to the Forwarder - base type: string, cod. table: T38 <a href="http://www.ebiz.enea.it/moda-ml/repository/codelist/draft/gc_T38.xml">http://www.ebiz.enea.it/moda-ml/repository/codelist/draft/gc_T38.xml</a> (XPath TEXOrdChange/terms/transInfo/transCondition) 0-3
transConditionText	free text description of the special condition of transport or special service requested to the Forwarder - base type: string, max length: 250, (XPath TEXOrdChange/terms/transInfo/transConditionText) 0-1
transMeans	means of transport, in general or referred to a specific leg - base type: string, cod. table: T40 <a href="http://www.ebiz.enea.it/moda-ml/repository/codelist/draft/gc_T40.xml">http://www.ebiz.enea.it/moda-ml/repository/codelist/draft/gc_T40.xml</a> (XPath TEXOrdChange/terms/transInfo/transMeans) 0-1
transMode	way of transport, in general or referred to the specified leg - base type: string, cod. table: T8 <a href="http://www.ebiz.enea.it/moda-ml/repository/codelist/draft/gc_T8.xml">http://www.ebiz.enea.it/moda-ml/repository/codelist/draft/gc_T8.xml</a> (XPath TEXOrdChange/terms/transInfo/transMode) 1-1
@transReason	reason for the transport - base type: string, cod. table: NT11 <a href="http://www.ebiz.enea.it/moda-ml/repository/codelist/draft/gc_NT11.xml">http://www.ebiz.enea.it/moda-ml/repository/codelist/draft/gc_NT11.xml</a> (XPath TEXOrdChange/terms/transInfo/@transReason) [Optional]
@uid	unique element identifier within the xml document - base type: string, (XPath TEXOrdChange/TXheader/refDoc/attachment/@uid) [Optional] (XPath TEXOrdChange/TXbody/TXitem/refDoc/attachment/@uid) [Optional]
@um	specification of the unit of measure - base type: string, cod. table: NT7 <a href="http://www.ebiz.enea.it/moda-ml/repository/codelist/draft/gc_NT7.xml">http://www.ebiz.enea.it/moda-ml/repository/codelist/draft/gc_NT7.xml</a> (XPath TEXOrdChange/texComInfo/pieceLength/@um) [Optional] [Default= MTR] (XPath TEXOrdChange/texComInfo/fabricWidth/@um) [Optional] [Default= CMT] (XPath TEXOrdChange/totals/totQty/@um) [Required] (XPath TEXOrdChange/terms/transInfo/grossWeight/@um) [Required] (XPath TEXOrdChange/TXbody/TXitem/texComInfo/pieceLength/@um) [Optional] [Default= MTR] (XPath TEXOrdChange/terms/allowanceCharge/@um) [Optional] (XPath TEXOrdChange/terms/transInfo/netWeight/@um) [Required] (XPath TEXOrdChange/TXbody/TXitem/price/@um) [Optional]

	<p>- nota: <i>Unit of measure of the product to which the price is referred (price per meter)</i></p> <p>(XPath TEXOrdChange/TXbody/TXitem/qty/@um) [Required]  (XPath TEXOrdChange/TXbody/TXitem/texComInfo/fabricWidth/@um) [Optional] [Default= CMT]</p>
uri	<p>Uniform Resource Identifier (URI) that identifies the external object as an Internet resource</p> <p>- base type: normalizedString,  (XPath TEXOrdChange/TXbody/TXitem/refDoc/attachment/externalReference/uri) 1-1  (XPath TEXOrdChange/TXheader/refDoc/attachment/externalReference/uri) 1-1</p>
@useProfile	<p>use profile to which the present document is compliant if it was agreed by the parties. It is suggested a URI with reference to the firm or the URL of the profile.</p> <p>- base type: string,  (XPath TEXOrdChange/@useProfile) [Optional]</p>
validityEnd	<p>date by which the validity ends, according to one of the patterns YYYY-MM-DD, YYYY-MM-DD:HH-MM or YYYY-WW.</p> <p>- base type: string,  (XPath TEXOrdChange/TXheader/validityEnd) 0-1</p>
@VAT	<p>VAT rate or code (DEPRECATED, use dtScheme element)</p> <p>- base type: string, cod. table: NT16  <a href="http://www.ebiz.enea.it/moda-ml/repository/codelist/draft/gc_NT16.xml">http://www.ebiz.enea.it/moda-ml/repository/codelist/draft/gc_NT16.xml</a>  (XPath TEXOrdChange/TXbody/TXitem/lineN/@VAT) [Optional]</p> <p>- nota: <i>Deprecated, prefer dtScheme when available.</i></p> <p>(XPath TEXOrdChange/TXbody/TXitem/thirdParty/@VAT) [Optional]  (XPath TEXOrdChange/TXheader/thirdParty/@VAT) [Optional]  (XPath TEXOrdChange/terms/allowanceCharge/@VAT) [Optional]</p>
@version	<p>Dictionary version from which the instance has been created</p> <p>- base type: string, cod. table: NT100  <a href="http://www.ebiz.enea.it/moda-ml/repository/codelist/draft/gc_NT100.xml">http://www.ebiz.enea.it/moda-ml/repository/codelist/draft/gc_NT100.xml</a>  (XPath TEXOrdChange/@version) [Optional] [Default= draft]</p>

## 2.3 Suggested best practices

**TEXOrdChange/TXbody/TXitem/qty** (net quantity of the article or object correlated, qualified by the function of the document (ordering, delivering, ..) and by the context)

this element can have two instances only if the units of measure are different

## 2.4 Enumeration tables

List of enumeration tables used in the XML document. You can find the corresponding codes at:  
<http://www.ebiz-tcf.eu/moda-ml/imple/moda-ml-draft.asp?lingua=en&pag=6>

NT1 - Order type  
NT100 - eBIZ TCFUpstream version  
NT11 - transport causal  
NT16 - VAT rate or code  
NT18 - message function  
NT19 - currency use qualifier  
NT2 - third party qualifier  
NT20 - price qualifier  
NT29 - format of a date  
NT3 - data format  
NT4 - end use  
NT43 - operational code qualifier  
NT5 - action code  
NT6 - coding system owner/issuer  
NT7 - unit of measure  
T1 - terms of payment  
T10 - ISO3166 - Country  
T2 - Modes of payment  
T21 - type of document  
T3 - terms of delivery  
T38 - transport conditions  
T4 - fabric piece inner packing (wrapping) 1  
T40 - type of transport means  
T41 - type of Allowance or Charge  
T44 - additional code type  
T5 - fabric piece inner packing (wrapping) 2  
T6 - fabric piece outer packing  
T61 - duty or tax or fee type  
T62 - duty or tax or fee category  
T8 - Modes of Transport  
T9 - ISO4217 - Currency

## ACKNOWLEDGEMENT



This action is part of the eBIZ-4.0 project, which has received funding from the European Union's COSME Programme (2014 - 2020).

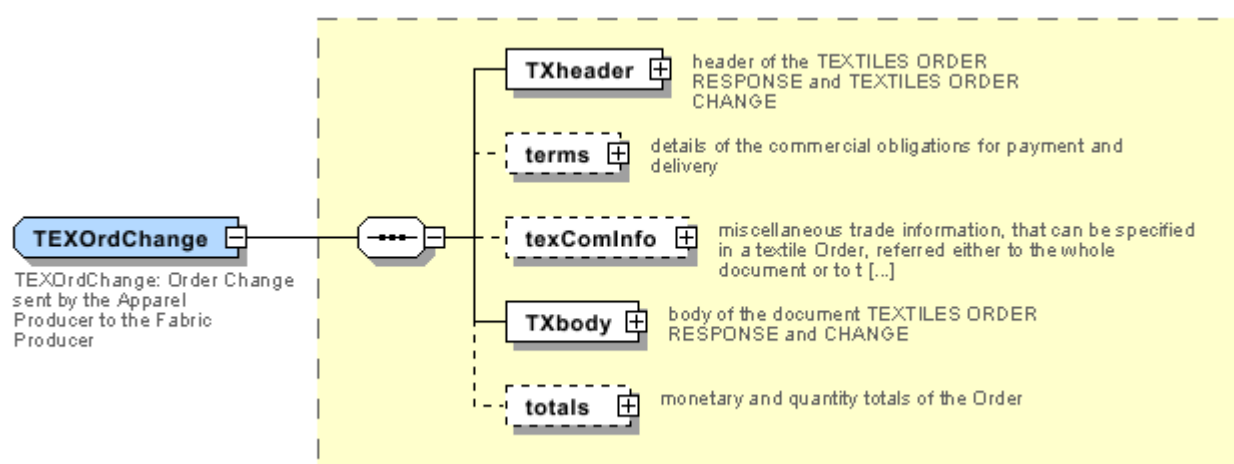
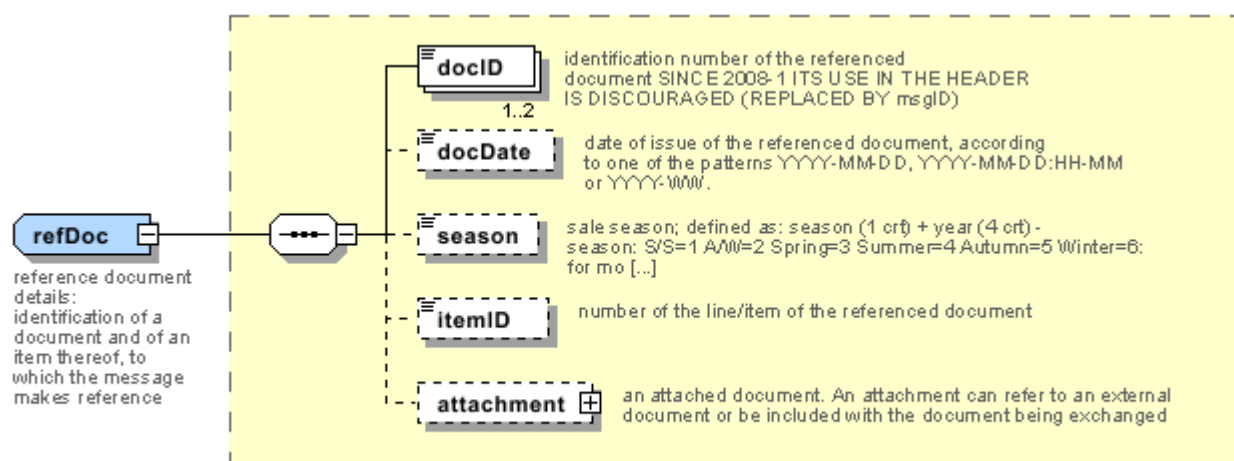
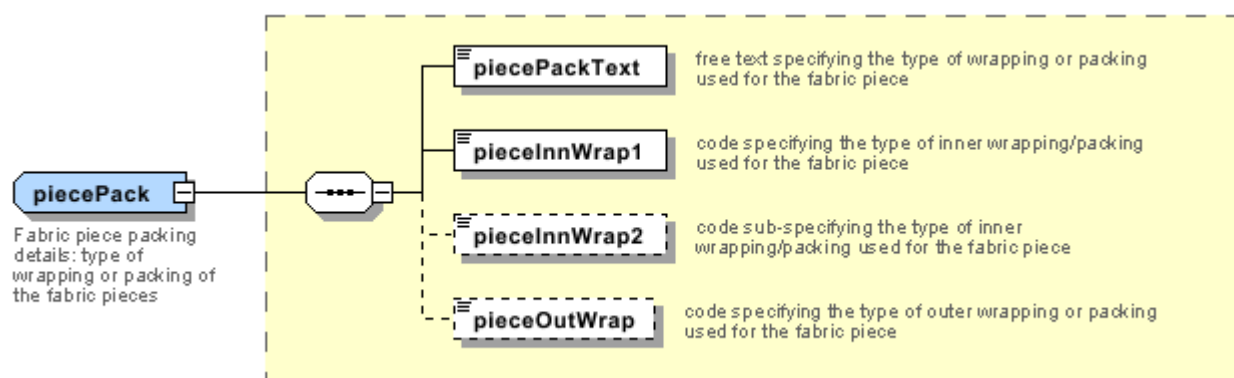
## DISCLAIMER

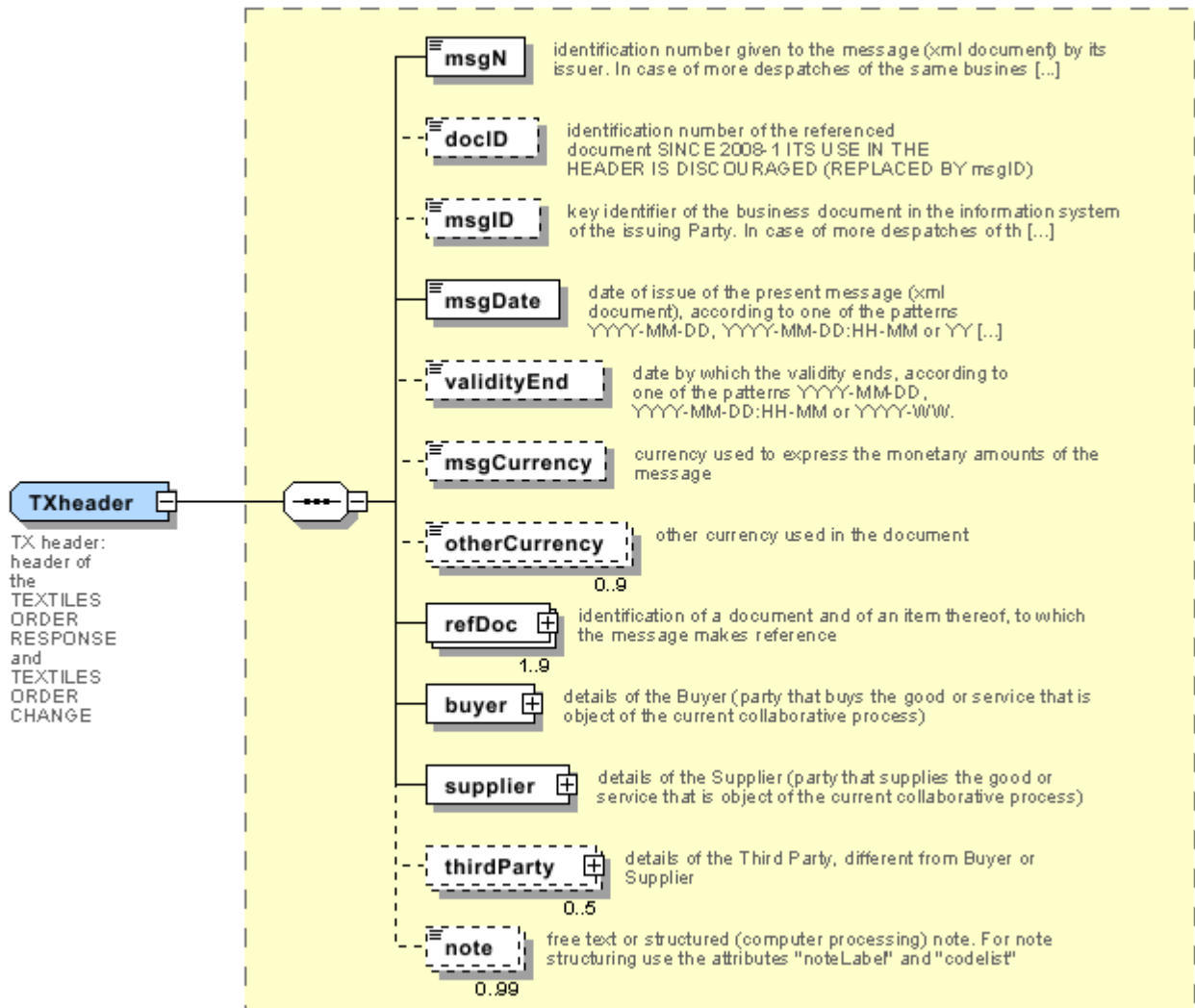
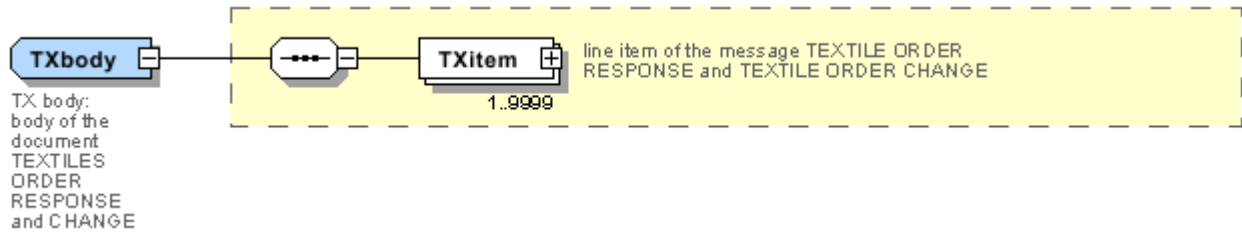
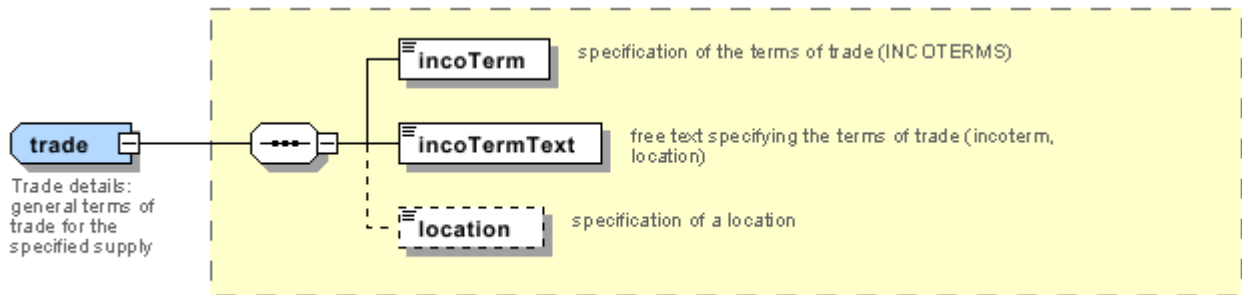
The content of this document represents the views of the authors only and is their sole responsibility; it cannot be considered to reflect the views of the European Commission and/or the Executive Agency for Small and Medium-sized Enterprises (EASME) or any other body of the European Union.

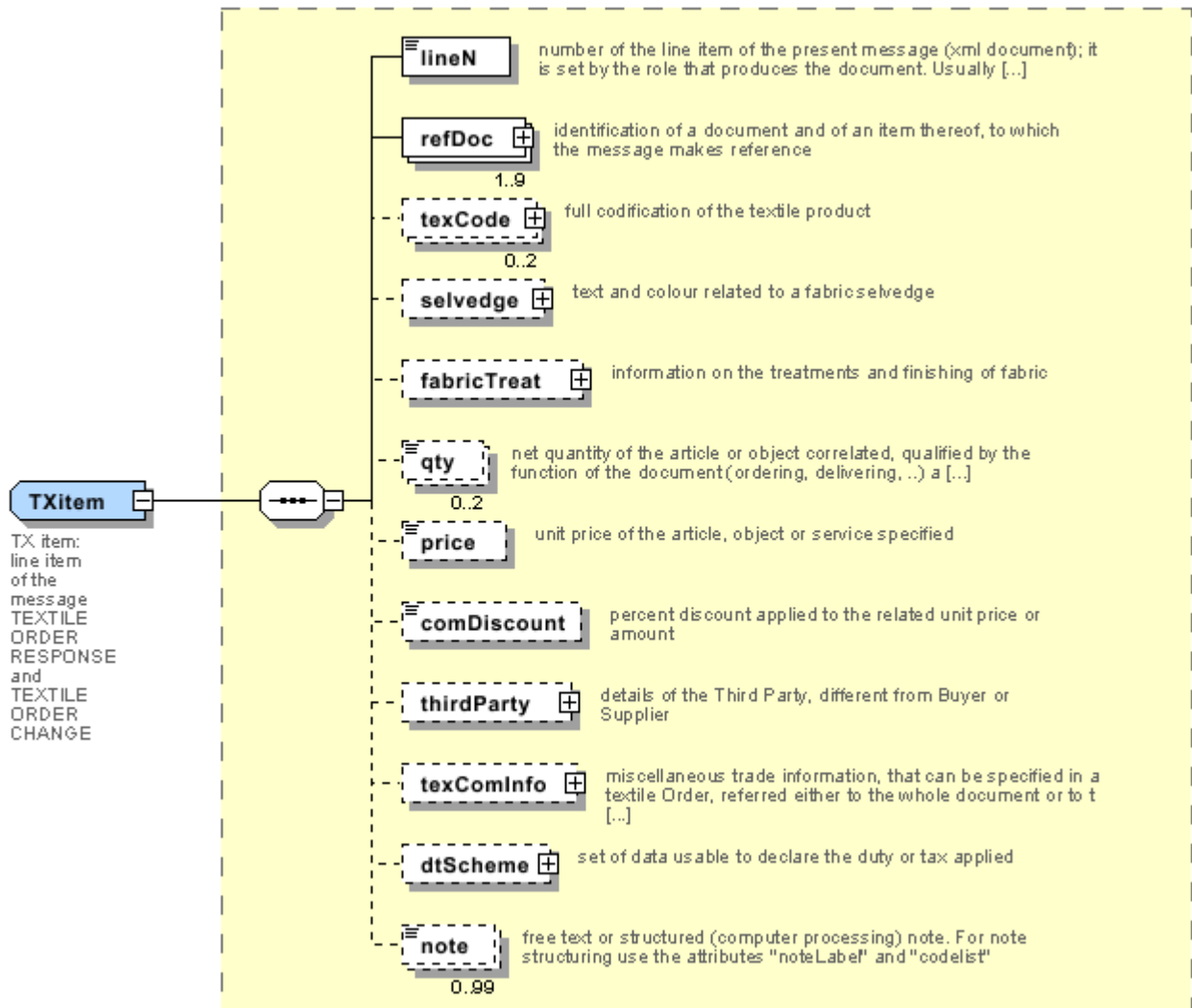
The European Commission and the Agency do not accept any responsibility for use that may be made of the information it contains.

## Annex A

Representative images of the principal complex elements' structure.











## Annex B

### NT1 - Order type

type of Order

Agency name: eBIZ

tabella cod.: NT1

File codes list (Generic code): [http://www.ebiz.enea.it/moda-ml/repository/codelist/draft/gc\\_NT1.xml](http://www.ebiz.enea.it/moda-ml/repository/codelist/draft/gc_NT1.xml)

Code	Description	Adoption note	Date of insertion
A	blanket	the order is open without a concrete delivery of product; it establishes an amount of goods to be produced in a future	
D	call-off	orders an amount of goods to be delivered (and invoiced and produced if necessary); it is important that it is clear that this amount should be subtracted from the amount of the blanket order referred in the refDoc element	
P	reservation		
STD	standard		

### NT100 - eBIZ TCFUpstream version

dictionary version

Agency name: eBIZ

tabella cod.: NT100

File codes list (Generic code): [http://www.ebiz.enea.it/moda-ml/repository/codelist/draft/gc\\_NT100.xml](http://www.ebiz.enea.it/moda-ml/repository/codelist/draft/gc_NT100.xml)

Code	Description	Adoption note	Date of insertion
2013-1	v2013-1		01/07/2013
2018-1	v2018-1		04/11/2018
draft	draft		08/09/2017

### NT11 - transport causal

reason for the transport

Agency name: eBIZ

tabella cod.: NT11

File codes list (Generic code): [http://www.ebiz.enea.it/moda-ml/repository/codelist/draft/gc\\_NT11.xml](http://www.ebiz.enea.it/moda-ml/repository/codelist/draft/gc_NT11.xml)

Code	Description	Adoption note	Date of insertion
FOC	free of charge		
FRW	return from re-works		
FST	return from storage		
FVW	return from view		
FWK	return from works		
IST	in storage		
NWK	return non-worked		
RJC	return from rejection		
SEL	to sell		
STO	to storage		
VEW	to view		
WRK	to works		

#### NT16 - VAT rate or code

VAT rate or code ( DEPRECATED, use dtScheme element )

tabella cod.: NT16

File codes list (Generic code): [http://www.ebiz.enea.it/moda-ml/repository/codelist/draft/gc\\_NT16.xml](http://www.ebiz.enea.it/moda-ml/repository/codelist/draft/gc_NT16.xml)

#### NT18 - message function

function performed by the present message with regards to the transmission

Agency name: eBIZ

tabella cod.: NT18

File codes list (Generic code): [http://www.ebiz.enea.it/moda-ml/repository/codelist/draft/gc\\_NT18.xml](http://www.ebiz.enea.it/moda-ml/repository/codelist/draft/gc_NT18.xml)

Code	Description	Adoption note	Date of insertion
CA	delete this document		01/07/2013
CP	copy		
OR	original		
RC	re-transmission for data correction		
RT	re-transmission		

### NT19 - currency use qualifier

qualification of another currency used in the document

Agency name: eBIZ

tabella cod.: NT19

File codes list (Generic code): [http://www.ebiz.enea.it/moda-ml/repository/codelist/draft/gc\\_NT19.xml](http://www.ebiz.enea.it/moda-ml/repository/codelist/draft/gc_NT19.xml)

Code	Description	Adoption note	Date of insertion
CAT	pricelist currency		
INV	invoicing currency		
ORD	order currency		
PAY	payment currency		
SAL	sales currency		

### NT2 - third party qualifier

Third Party role qualifier

Agency name: eBIZ

tabella cod.: NT2

File codes list (Generic code): [http://www.ebiz.enea.it/moda-ml/repository/codelist/draft/gc\\_NT2.xml](http://www.ebiz.enea.it/moda-ml/repository/codelist/draft/gc_NT2.xml)

Code	Description	Adoption note	Date of insertion
AG	Sales Agent		
CO	Quality Controller		
DC	Response to		
DF	Invoicee		
DI	Copy to (CC)		28/10/2014
DM	Consignee		
DP	Consignment address (Delivery Party)		
IM	Importer		
OR	Originator		10/09/2014
SP	Forwarder		
TX	Tax Representative		

### NT20 - price qualifier

type of price with reference to discount and taxes

Agency name: eBIZ

tabella cod.: NT20

File codes list (Generic code): [http://www.ebiz.enea.it/moda-ml/repository/codelist/draft/gc\\_NT20.xml](http://www.ebiz.enea.it/moda-ml/repository/codelist/draft/gc_NT20.xml)

Code	Description	Adoption note	Date of insertion
GET	gross excluding taxes		
GIT	gross including taxes		
NET	net excluding taxes		
NIT	net including taxes		

### NT29 - format of a date

format used for the date

Agency name: eBIZ

tabella cod.: NT29

File codes list (Generic code): [http://www.ebiz.enea.it/moda-ml/repository/codelist/draft/gc\\_NT29.xml](http://www.ebiz.enea.it/moda-ml/repository/codelist/draft/gc_NT29.xml)

Code	Description	Adoption note	Date of insertion
D	YYYY-MM-DD		
M	YYYY-MM-DD:HH-MM		
W	YYYY-WW		

### NT3 - data format

format of a string according to a customized User rule (local rule)

Agency name: eBIZ

tabella cod.: NT3

File codes list (Generic code): [http://www.ebiz.enea.it/moda-ml/repository/codelist/draft/gc\\_NT3.xml](http://www.ebiz.enea.it/moda-ml/repository/codelist/draft/gc_NT3.xml)

Code	Description	Adoption note	Date of insertion
EN4	GS1-GLN		01/07/2013
MD	mutually agreed		

#### NT4 - end use

specifies the final use of the product

Agency name: eBIZ

tabella cod.: NT4

File codes list (Generic code): [http://www.ebiz.enea.it/moda-ml/repository/codelist/draft/gc\\_NT4.xml](http://www.ebiz.enea.it/moda-ml/repository/codelist/draft/gc_NT4.xml)

Code	Description	Adoption note	Date of insertion
PC	test piece		
PR	production		
SA	Sample		10/09/2014
SC	samples card		
TI	patch		
TP	(test cut)		

#### NT43 - operational code qualifier

Agency name: eBIZ

tabella cod.: NT43

File codes list (Generic code): [http://www.ebiz.enea.it/moda-ml/repository/codelist/draft/gc\\_NT43.xml](http://www.ebiz.enea.it/moda-ml/repository/codelist/draft/gc_NT43.xml)

Code	Description	Adoption note	Date of insertion
1	event		08/09/2017
2	sales channel		08/09/2017
3	goods management type		08/09/2017
4	special initiative		08/09/2017

#### NT5 - action code

action performed by the present line upon the referenced document line

Agency name: eBIZ

tabella cod.: NT5

File codes list (Generic code): [http://www.ebiz.enea.it/moda-ml/repository/codelist/draft/gc\\_NT5.xml](http://www.ebiz.enea.it/moda-ml/repository/codelist/draft/gc_NT5.xml)

Code	Description	Adoption note	Date of insertion
A	CANCELLED		

C	CONFIRMED		
N	NEW ORDER LINE (created by an order change)		
R	PROVISIONAL CONFIRMATION		
S	DEFINITIVE CONFIRMATION		
SA	suspension accepted		
SN	suspension not accepted		
SR	suspension request		
V	AMENDED		

### NT6 - coding system owner/issuer

code specifying the organisation who has created or owns the coding or numbering system

Agency name: eBIZ

tabella cod.: NT6

File codes list (Generic code): [http://www.ebiz.enea.it/moda-ml/repository/codelist/draft/gc\\_NT6.xml](http://www.ebiz.enea.it/moda-ml/repository/codelist/draft/gc_NT6.xml)

Code	Description	Adoption note	Date of insertion
CL	Customer/buyer		
CO	Quality Controller		
EN	GS1 ( ex-EAN International )		
ES	e-Stockflow		
FO	Supplier		
GS	GS1		01/07/2013
MF	VAT identifier		
ML	Moda-ML		
SP	Service Provider		

### NT7 - unit of measure

specification of the unit of measure, it is a sub set of table Unit of Measure Code - UN/ECE REC 20 delivered by United Nations Economic Commission for Europe (UN/ECE)

Agency name: eBIZ / UN/ECE

tabella cod.: NT7

File codes list (Generic code): [http://www.ebiz.enea.it/moda-ml/repository/codelist/draft/gc\\_NT7.xml](http://www.ebiz.enea.it/moda-ml/repository/codelist/draft/gc_NT7.xml)

Other link: <http://docs.oasis-open.org/ubl/os-UBL-2.1/cl/gc/default/UnitOfMeasureCode-2.1.gc#>

Code	Description	Adoption note	Date of insertion
------	-------------	---------------	-------------------

CMK	square centimetre		20/12/2017
CMQ	cubic centimetre		20/12/2017
CMT	centimetre		
CNE	centiNewton		
CO2TON	ton of CO2		10/09/2014
COUPLES	couples		
DMQ	cubic decimetre		
E37	pixel		11/04/2018
GRM	gram		
HUR	hour		
INH	inch		
KGM	kilogram		
KMT	kilometer		
KWH	kilowatthours		10/09/2014
LBR	pound		
MIN	minute		
MMK	centimetre		20/12/2017
MMK	square millimetre		20/12/2017
MTK	square metre		20/12/2017
MTQ	cubic metre		
MTR	metre		
NMB	numero		
ONZ	ounce		
P1	percent		
PPM	parts per milion		
PZ	piece		
RPM	rounds per metre		
YRD	yard		

### T1 - terms of payment

code specifying the terms or time by which the payment must be done

Agency name: eBIZ

tabella cod.: T1

File codes list (Generic code): [http://www.ebiz.enea.it/moda-ml/repository/codelist/draft/gc\\_T1.xml](http://www.ebiz.enea.it/moda-ml/repository/codelist/draft/gc_T1.xml)



<b>Code</b>	<b>Description</b>	<b>Adoption note</b>	<b>Date of insertion</b>
ANTICIP	PAYMENT IN ADVANCE		
BLCOLLECT/120D	BILL OF LADING 120 DD		
BLCOLLECT/30D	BILL OF LADING 30 DD		
BLCOLLECT/60D	BILL OF LADING 60 DD		
BLCOLLECT/90D	BILL OF LADING 90 DD		
CASH	PAYMENT ON DELIVERY		
CASHINV	PAYMENT ON RECEIPT OF INVOICE		
CREDOC/0D	DOCUMENTARY CREDIT FOR PAYM. AT SIGHT		
CREDOC/120	DOCUMENTARY CREDIT FOR PAYM. AT 120 DD		
CREDOC/150	DOCUMENTARY CREDIT FOR PAYM. AT 150 DD		
CREDOC/180	DOCUMENTARY CREDIT FOR PAYM. AT 180 DD		
CREDOC/30D	DOCUMENTARY CREDIT FOR PAYM. AT 30 DD		
CREDOC/45D	DOCUMENTARY CREDIT FOR PAYM. AT 45 DD		
CREDOC/60	DOCUMENTARY CREDIT FOR PAYM. AT 60 DD		
CREDOC/90	DOCUMENTARY CREDIT FOR PAYM. AT 90 DD		
DEL/10	PAYMENT AT 10 DD AFTER DELIVERY		
DOCOLLECT/120D	DOCUMENTARY COLLECTION AT 120 DD		
DOCOLLECT/30D	DOCUMENTARY COLLECTION AT 30 DD		
DOCOLLECT/60D	DOCUMENTARY COLLECTION AT 60 DD		
DOCOLLECT/90D	DOCUMENTARY COLLECTION AT 90 DD		
INV/120D	PAYMENT AT 120 DD AFTER RECEIPT OF INVOICE		
INV/150D	PAYMENT AT 150 DD AFTER RECEIPT OF INVOICE		
INV/180D	PAYMENT AT 180 DD AFTER RECEIPT OF INVOICE		
INV/30D	PAYMENT AT 30 DD AFTER RECEIPT OF INVOICE		
INV/45D	PAYMENT AT 45 DD AFTER RECEIPT OF INVOICE		
INV/60D	PAYMENT AT 60 DD AFTER RECEIPT OF INVOICE		
INV/90D	PAYMENT AT 90 DD AFTER RECEIPT OF INVOICE		
INVULTIMO	PAYMENT AT END MONTH RECEIPT INVOICE		
INVULTIMO/10D	PAYMENT 10 DD AFTER END MONTH RECEIPT INVOICE		
INVULTIMO/120D	PAYMENT 120 DD AFTER END MONTH RECEIPT INVOICE		
INVULTIMO/150D	PAYMENT 150 DD AFTER END MONTH RECEIPT INVOICE		
INVULTIMO/180D	PAYMENT 180 DD AFTER END MONTH RECEIPT INVOICE		
INVULTIMO/240D	PAYMENT 240 DD AFTER END MONTH RECEIPT INVOICE		
INVULTIMO/30D	PAYMENT 30 DD AFTER END MONTH RECEIPT INVOICE		

INVULTIMO/45D	PAYMENT 45 DD AFTER END MONTH RECEIPT INVOICE		
INVULTIMO/60D	PAYMENT 60 DD AFTER END MONTH RECEIPT INVOICE		
INVULTIMO/90D	PAYMENT 90 DD AFTER END MONTH RECEIPT INVOICE		
NOPAY	WITHOUT PAYMENT		
RECREDOC/0D	IRREVOC. DOCUMENTARY CREDIT FOR PAYM. AT SIGHT		
RECREDOC/120D	IRREVOC. DOCUMENTARY CREDIT FOR PAYM. AT 120 DD		
RECREDOC/150D	IRREVOC. DOCUMENTARY CREDIT FOR PAYM. AT 150 DD		
RECREDOC/180D	IRREVOC. DOCUMENTARY CREDIT FOR PAYM. AT 180 DD		
RECREDOC/30D	IRREVOC. DOCUMENTARY CREDIT FOR PAYM. AT 30 DD		
RECREDOC/45D	IRREVOC. DOCUMENTARY CREDIT FOR PAYM. AT 45 DD		
RECREDOC/60D	IRREVOC. DOCUMENTARY CREDIT FOR PAYM. AT 60 DD		
RECREDOC/90D	IRREVOC. DOCUMENTARY CREDIT FOR PAYM. AT 90 DD		
ULTIMO	PAYMENT BY END MONTH OF DELIVERY		
ULTIMO/10	PAYMENT AT 10 DD AFTER END MONTH OF DELIVERY		

### T10 - ISO3166 - Country

code of the nation

Agency name: ISO

tabella cod.: T10

File codes list (Generic code): [http://www.ebiz.enea.it/moda-ml/repository/codelist/draft/gc\\_T10.xml](http://www.ebiz.enea.it/moda-ml/repository/codelist/draft/gc_T10.xml)

Table not printed: there are 239 elements, more than the maximum specified for printing: 99.

### T2 - Modes of payment

way or means of payment

Agency name: eBIZ

tabella cod.: T2

File codes list (Generic code): [http://www.ebiz.enea.it/moda-ml/repository/codelist/draft/gc\\_T2.xml](http://www.ebiz.enea.it/moda-ml/repository/codelist/draft/gc_T2.xml)

Code	Description	Adoption note	Date of insertion
BB	bank transfer		
IA	collection through Agent		
IS	collection through Forwarder		
RB	bank receipt		

RD	remittance		
SW	bank SWIFT		
TR	bank draft		

## T21 - type of document

type or class to which the referenced document belongs

Agency name: eBIZ

tabella cod.: T21

File codes list (Generic code): [http://www.ebiz.enea.it/moda-ml/repository/codelist/draft/gc\\_T21.xml](http://www.ebiz.enea.it/moda-ml/repository/codelist/draft/gc_T21.xml)

Code	Description	Adoption note	Date of insertion
BOR	blanket order		01/02/2018
CAT	Price catalogue - tech sheet		
CEO	Certificate of origin		13/04/2018
CER	Certificate		13/04/2018
COC	colour card		
CRN	Credit note		08/09/2017
CTO	Checking order		01/07/2013
CTR	Contract		
CXF	CxF3 file		01/07/2013
DAD	Darn order		
DDT	ddt		
DEA	Despatch advise		
DER	Despatch request		
DR	Document Request		02/12/2014
FOR	Forecast		02/12/2014
GSO	Garment stock offer		
GSX	Garment stock offer change		
INV	Invoice		
KCC	Knitting-Clothing Commission Order		02/12/2014
KCI	Garment in Work Inventory Report		02/12/2014
M2M	Made to Measure Production Order		02/12/2014
MAS	Master marker		
MCI	Visual merchandising instruction		13/04/2018
OCH	Order change		

OFF	Offer		
ORD	Purchase order		
ORP	Order response		
OSR	order status request		
OSS	Offer status		02/12/2014
OST	Order status		
OUR	our reference		
QR	Quality Report		02/12/2014
RAI	Raw Material in Work Inventory Report		02/12/2014
RDC	Raw dyeing commission order		
RDH	Raw dyeing order change		
RDR	Raw dyeing order response		
REA	Receiving advise		
REQ	Request for Offer		
RET	Return		02/12/2014
RSC	Spinning commission order		
RSH	Spinning order change		
RSR	Spinning order response		
SCL	process sheet		
TFC	Textile dyeing-finishing commission order		
TFX	Textile Dyeing-Finishing Order Change		02/12/2014
TPC	Textile printing commission order		
TPX	Textile Printing Order Change		02/12/2014
TWI	Textile in work inventory		
VMI	visual merchandising instructions		01/02/2018
WAC	Warping commission order		
WEC	Weaving commission order		
YDC	Yarn dyeing commission order		
YDH	Yarn dyeing order change		
YDR	Yarn dyeing order response		
YTC	Twisting commission order		
YWI	Yarn in work inventory		

### T3 - terms of delivery

specification of the terms of trade (INCOTERMS)

Agency name: Incoterms

tabella cod.: T3

File codes list (Generic code): [http://www.ebiz.enea.it/moda-ml/repository/codelist/draft/gc\\_T3.xml](http://www.ebiz.enea.it/moda-ml/repository/codelist/draft/gc_T3.xml)

Code	Description	Adoption note	Date of insertion
CFR	COST AND FREIGHT (named port of destination)		
CIF	COST, INSURANCE AND FREIGHT (named port of destination)		
CIP	CARRIAGE AND INSURANCE PAID (named place of destination)		
CPA	CARRIAGE PAID (named place of destination)		
DAF	DELIVERED AT FRONTIER (named place)	according to Incoterms® 2010 it is obsolete	08/12/2017
DAP	Delivered at Place of destination (named place of destination)	according to Incoterms® 2010	08/12/2017
DAT	Delivered at Terminal (named place of destination)	according to Incoterms® 2010	08/12/2017
DDP	DELIVERED DUTY PAID (named place of destination)		
DDU	DELIVERED DUTY UNPAID (named place of destination)	according to Incoterms® 2010 it is obsolete, use DAP	08/12/2017
DEQ	DELIVERED EX-QUAY (named port of destination)	according to Incoterms® 2010 it is obsolete	08/12/2017
DES	DELIVERED EX-SHIP (named port of destination)	according to Incoterms® 2010 it is obsolete	08/12/2017
EXW	EX WORKS (named place)		
FAS	FREE ALONGSIDE SHIP (named port of shipment)		
FCA	FREE CARRIER (named place)		
FOB	FREE ON BOARD (named port of shipment)		

### T38 - transport conditions

special condition of transport or special service requested to the Forwarder

tabella cod.: T38

File codes list (Generic code): [http://www.ebiz.enea.it/moda-ml/repository/codelist/draft/gc\\_T38.xml](http://www.ebiz.enea.it/moda-ml/repository/codelist/draft/gc_T38.xml)

Code	Description	Adoption note	Date of insertion
ACC	arrange customs clearance		
CAL	Carrier loads		
CAU	Carrier unloads		
CMR	CMR carnet		
FFN	freight forwarders national conditions		
FLD	special agreement for full loading		
NCC	do not arrange customs clearance		
PPB	packaging paid by Buyer		
PPS	packaging paid by Supplier		
PRO	proof of delivery		
RFR	return container free		
RPC	return container paid by Customer		
RPS	return container paid by Supplier		
SHL	Shipper loads		
SHU	Consignee unloads		

#### T4 - fabric piece inner packing (wrapping) 1

code specifying the type of inner wrapping/packing used for the fabric piece

Agency name: eBIZ

tabella cod.: T4

File codes list (Generic code): [http://www.ebiz.enea.it/moda-ml/repository/codelist/draft/gc\\_T4.xml](http://www.ebiz.enea.it/moda-ml/repository/codelist/draft/gc_T4.xml)

Code	Description	Adoption note	Date of insertion
A	Folded, whole width		
B	Folded, doubled		
C	Folded, tube products		
D	Spoiled, whole width		
E	Spoiled, doubled, pli: left		
F	Spoiled, doubled, pli: right		
G	Rolled, whole width, single item		
H	Rolled, whole width, several items		

I	Rolled, doubled		
J	Rolled, tube products		

#### T40 - type of transport means

means of transport, in general or referred to a specific leg

Agency name: eBIZ

tabella cod.: T40

File codes list (Generic code): [http://www.ebiz.enea.it/moda-ml/repository/codelist/draft/gc\\_T40.xml](http://www.ebiz.enea.it/moda-ml/repository/codelist/draft/gc_T40.xml)

Code	Description	Adoption note	Date of insertion
AIR	aircraft		
SHP	ship		
TRU	truck		
VAN	van		

#### T41 - type of Allowance or Charge

coded specification of an Allowance or Charge (elaborated from UNECE 4465)

Agency name: eBIZ

tabella cod.: T41

File codes list (Generic code): [http://www.ebiz.enea.it/moda-ml/repository/codelist/draft/gc\\_T41.xml](http://www.ebiz.enea.it/moda-ml/repository/codelist/draft/gc_T41.xml)

Code	Description	Adoption note	Date of insertion
1	Agreed settlement		19/08/2018
10	Costs for draft		19/08/2018
11	Bank charges	DEPRECATED, use C BK	19/08/2018
12	Agent commission		19/08/2018
14	Wrong delivery		19/08/2018
15	Goods returned to agent		19/08/2018
16	Goods partly returned		19/08/2018

17	Transport damage		19/08/2018
19	Trade discount		19/08/2018
2	Below specification goods		19/08/2018
20	Deduction for late delivery	DEPRECATED, use C WB	19/08/2018
21	Advertising costs		19/08/2018
22	Customs duties		19/08/2018
23	Telephone and postal costs		19/08/2018
24	Repair costs		19/08/2018
25	Attorney fees		19/08/2018
26	Taxes		19/08/2018
3	Damaged goods		19/08/2018
30	Direct payment to seller		19/08/2018
32	Goods not delivered		19/08/2018
33	Late delivery		19/08/2018
35	Goods returned		19/08/2018
36	Invoice not received		19/08/2018
37	Credit note to debtor/not to us		19/08/2018
38	Deducted bonus		19/08/2018
39	Deducted discount		19/08/2018
4	Short delivery		19/08/2018
40	Deducted freight costs		19/08/2018
41	Deduction against other invoices		19/08/2018



42	Credit balance(s)		19/08/2018
45	Debit note to seller		19/08/2018
46	Discount beyond terms		19/08/2018
48	Allowance/charge error		19/08/2018
49	Substitute product		19/08/2018
50	Terms of sale error		19/08/2018
52	Wrong invoice		19/08/2018
53	Duplicate invoice		19/08/2018
54	Weight error		19/08/2018
55	Additional charge not authorized		19/08/2018
56	Incorrect discount		19/08/2018
57	Price change		19/08/2018
58	Variation		19/08/2018
59	Chargeback		19/08/2018
65	Settlement to agent		19/08/2018
66	Cash discount		19/08/2018
7	Payment on account		19/08/2018
70	Wrong monetary amount resulting from incorrect free goods quantity		19/08/2018
72	Temporary special promotion		19/08/2018
73	Difference in tax rate		19/08/2018
74	Quantity discount		19/08/2018
75	Promotion discount		19/08/2018

76	Cancellation deadline passed		19/08/2018
77	Pricing discount		19/08/2018
78	Volume discount		19/08/2018
79	Sundry discount		19/08/2018
8	Returnable container charge included		19/08/2018
9	Invoice error		19/08/2018
AW A	bonus for works ahead of schedule		
CBK	bank charges		
CCR	servizio di corriere		
CIN	insurance		
CLB	labelling		
CPK	packing		
CSP	special packing		
CW B	penalty for works behind schedule		

#### T44 - additional code type

qualifier of the additional coding of a product

Agency name: eBIZ

tabella cod.: T44

File codes list (Generic code): [http://www.ebiz.enea.it/moda-ml/repository/codelist/draft/gc\\_T44.xml](http://www.ebiz.enea.it/moda-ml/repository/codelist/draft/gc_T44.xml)

Code	Description	Adoption note	Date of insertion
CC	colour card		
CL	sales collection		
CO	company identification code		08/09/2017
DY	dye number		
LT	lot number		
MDI	Made in		08/09/2017
MS	manufacturing state		
PKG	packaging		09/09/2014

PL	product line		
RGB	RGB value		
SE	servedge code		

### T5 - fabric piece inner packing (wrapping) 2

code specifying the sub-type of inner wrapping/packing used for the fabric piece

Agency name: eBIZ

tabella cod.: T5

File codes list (Generic code): [http://www.ebiz.enea.it/moda-ml/repository/codelist/draft/gc\\_T5.xml](http://www.ebiz.enea.it/moda-ml/repository/codelist/draft/gc_T5.xml)

Code	Description	Adoption note	Date of insertion
A	Open		
B	Folded once, not looped		
C	Folded twice, not looped		
H	Folded once, looped		
I	Folded twice, looped		
J	Without inner object, right side inside		
K	On carton or spooling plank, right side inside		
L	On spool (for pressure sensitive products), right side inside		
M	Without inner object, left side inside		
N	On carton or spooling plank, left side inside		
O	On spool (for pressure sensitive products), left side inside		
P	Without inner object, right side inside (deprecated code)		
Q	On carton, right side inside		
R	On wooden stick, right side inside		
S	Without inner object, left side inside (deprecated code)		
T	On carton, left side inside		
U	On wooden stick, left side inside		

### T6 - fabric piece outer packing

code specifying the type of outer wrapping or packing used for the fabric piece

Agency name: eBIZ

tabella cod.: T6

File codes list (Generic code): [http://www.ebiz.enea.it/moda-ml/repository/codelist/draft/gc\\_T6.xml](http://www.ebiz.enea.it/moda-ml/repository/codelist/draft/gc_T6.xml)

Code	Description	Adoption note	Date of insertion
0	Not wrapped		
1	Totally wrapped		
2	Wrapped, one side open		
3	Wrapped, both sides open		
4	Wrapped, one side open, with show corner		
5	Wrapped in cartons		
6	Double wrapped		

### T61 - duty or tax or fee type

duty or tax or fee type

Agency name: eBIZ

tabella cod.: T61

File codes list (Generic code): [http://www.ebiz.enea.it/moda-ml/repository/codelist/draft/gc\\_T61.xml](http://www.ebiz.enea.it/moda-ml/repository/codelist/draft/gc_T61.xml)

Code	Description	Adoption note	Date of insertion
BOL	stamp duty		01/07/2013
CUD	customs duty		01/07/2013
ENV	environmental tax		01/07/2013
FRE	no tax		01/07/2013
OTH	other tax charges		01/07/2013
VAT	value added tax		01/07/2013

### T62 - duty or tax or fee category

duty or tax or fee category

Agency name: eBIZ

tabella cod.: T62

File codes list (Generic code): [http://www.ebiz.enea.it/moda-ml/repository/codelist/draft/gc\\_T62.xml](http://www.ebiz.enea.it/moda-ml/repository/codelist/draft/gc_T62.xml)

Code	Description	Adoption note	Date of insertion
AA	lower than standard rate		01/07/2013

E	tax not applicable		01/07/2013
H	higher than standard rate		01/07/2013
O	outside scope of tax		01/07/2013
S	standard rate		01/07/2013
Z	zero rate goods		01/07/2013

### T8 - Modes of Transport

way of transport, in general or referred to the specified leg

Agency name: eBIZ

tabella cod.: T8

File codes list (Generic code): [http://www.ebiz.enea.it/moda-ml/repository/codelist/draft/gc\\_T8.xml](http://www.ebiz.enea.it/moda-ml/repository/codelist/draft/gc_T8.xml)

Code	Description	Adoption note	Date of insertion
1	MARITIME TRANSPORT		
10	Courier		01/07/2013
2	RAIL TRANSPORT		
3	ROAD TRANSPORT		
4	AIR TRANSPORT		
5	MAIL		
6	AIR + SHIP TRANSPORT		
8	INLAND WATER TRANSPORT		
9	MODE UNKNOWN		

### T9 - ISO4217 - Currency

currency code

Agency name: ISO

tabella cod.: T9

File codes list (Generic code): [http://www.ebiz.enea.it/moda-ml/repository/codelist/draft/gc\\_T9.xml](http://www.ebiz.enea.it/moda-ml/repository/codelist/draft/gc_T9.xml)

Table not printed: there are 205 elements, more than the maximum specified for printing: 99.