



<http://www.ebiz-tcf.eu>

DRAFT

IMPLEMENTATION GUIDE

TRANSACTION "GARMENT IN WORK INVENTORY REPORT"

Version: draft

Date of release: 17/5/2019

Document code: G044

technical Documentation: <http://www.ebiz.enea.it>

XML Schemas repository: <http://www.ebiz.enea.it/moda-ml/repository/schema/draft/default.asp>

Guides repository: <http://www.ebiz.enea.it/moda-ml/repository/guide/draft/default.asp>

Guide filename: G044-eBIZ-GarmentInWorkInventoryReport.pdf

0. PREMISE

This document contains a proposal for the updating and extension of eBIZ specifications starting from the eBIZ version released as CEN CWA 16667 in 2013. Under the name of 'Draft version' it is reported the result of an extensive work of analysis and consultation aimed at developing and maintaining eBIZ specifications.

In particular, the content of this proposal is the result of various activities, mainly those carried out within the framework of the **eBIZ 4.0 project** funded by the European Commission, call COS-DESIGN-2015-3-06, topic COS-2015-DESIGN-2.

The technical contents are backwards compatible with the latest official published version.

1. BUSINESS DESCRIPTION

1.1 Scope

The present guide has been issued to assist the companies of the Textile-Clothing sector in the implementation of the standard XML document type "GARMENT IN WORK INVENTORY REPORT", providing all the instruction required for its use in the context of e-commerce in the Textile industry, as shown in the enclosed diagrams.

All the rules required for the construction and validation of the document are embedded into the specific XML-Schema, which is detailed in section "Implementation guide".

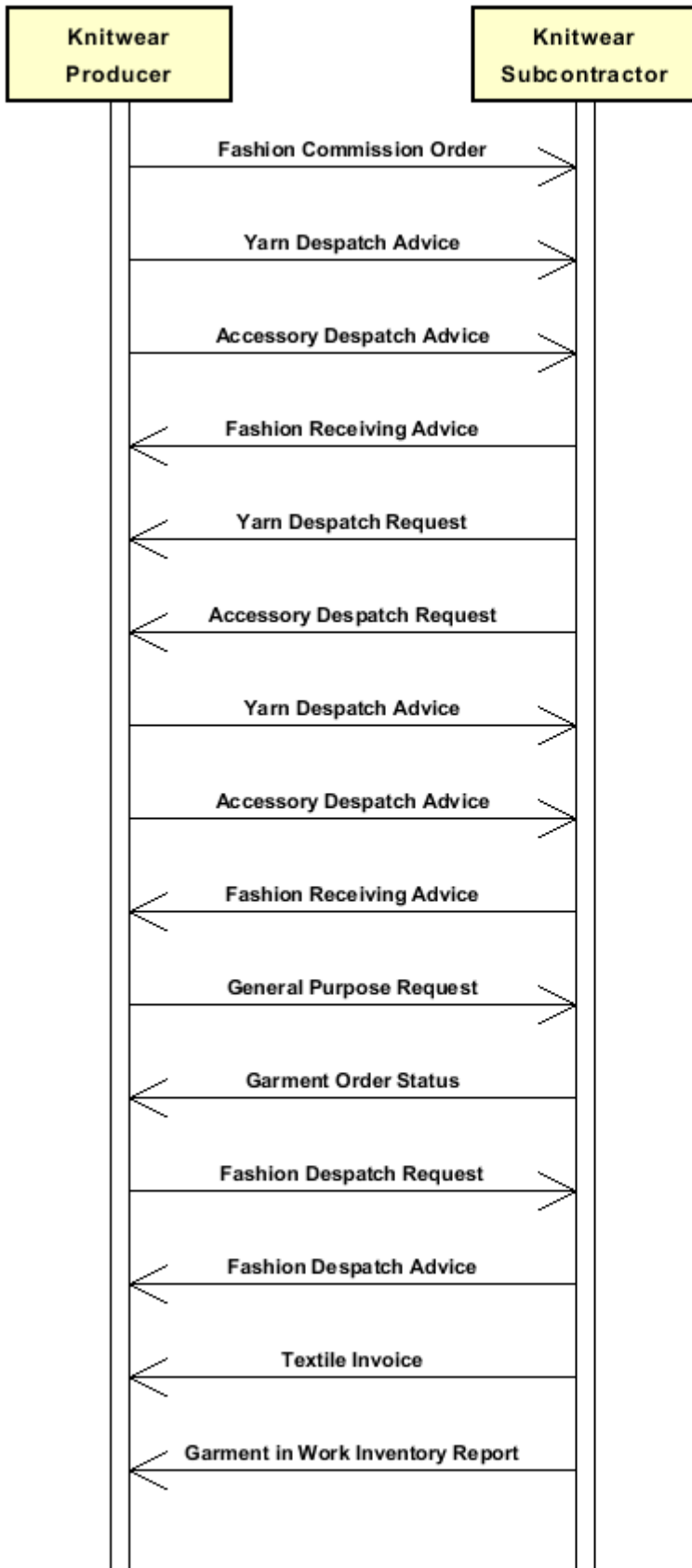
1.2 Generalities

The present document can be used by a Knitwear or Clothing Subcontractor to inform his Client (Commission issuer), periodically or on demand, about the quantity of pre-works or in-work Textile items (Client's property) stocked at the Subcontractor's premises.

This inventory may refer to all the goods of one Commission issuer or just to those related to one Commission order; item quantities may be subdivided by type of stock and physical location.

1.3. Possible scenario

Knitting and assembling



2. IMPLEMENTATION GUIDE

2.1 General structure of XML document

All the business data that can be exchanged through this class of documents are shown in the following "document structure", that provides a simplified vision of the Schema.

In particular:

- the two numbers following each element define its "cardinality" (minimum and maximum number of occurrences); the minimum equal zero indicates that the element is optional, the minimum greater than zero indicates that is mandatory;
- the bold character denotes the complex elements (aggregates of simple elements) that were built for the sake of functionality and re-usability of some complex informations sets. The child elements in each parent element are easily spotted as "indented";
- the symbol "@" denotes an attribute of the preceding element; here "the usage indicator (optional, required, ...)" is shown in square brackets.

Structure

GARWorkInv

@msgfunction [Optional] [Default= OR]

@version [Optional] [Default= draft]

@useProfile [Optional]

| GWIheader 1-1

| | msgN 1-1

| - choose -

| | msgID 0-1

| - or -

| | docID 0-1

| | *@numberingOrg [Optional]*

| - end choose -

| | msgDate 1-1

| | *@dateForm [Optional]*

| | inventoryDate 1-1

| | *@dateForm [Optional]*

| refDoc 0-9

| | *@docType [Required]*

| | | docID 1-2

| | | *@numberingOrg [Optional]*

| | | docDate 0-1

| | | *@dateForm [Optional]*

| | | season 0-1

| | | *@numberingOrg [Optional]*

| | | *@codeList [Optional]*

| | | *@listName [Optional]*

| | | *@listVersion [Optional]*

| | | itemID 0-1

| attachment 0-1

| | *@uid [Optional]*

| | | fileName 0-1

| | | *@numberingOrg [Optional]*

| | | binaryObject 0-1

| | | *@format [Optional]*

| | | *@mime [Optional]*

| | | *@encoding [Optional]*

| | | *@characterSet [Optional]*

| externalReference 0-99

| | | uri 1-1

| | | *@isURL [Optional] [Default= true]*

| | | mimeTypeCode 0-1

| | | | formatCode 0-1
| | | | encodingCode 0-1
| | | | characterSetCode 0-1

| **buyer 1-1**

| @logo [Optional]

| @sender [Optional]

| | id 1-1

| | | @numberingOrg [Optional]

| | additionalIdentifier 0-9

| | | @numberingOrg [Optional]

| | | @idQualifier [Optional]

| | legalName 0-1

| | dept 0-1

| | subDept 0-1

| | person 0-1

| | | @email [Optional]

| | | @phone [Optional]

| | | @fax [Optional]

| | street 0-1

| | city 0-1

| | subCountry 0-1

| | country 0-1

| | postCode 0-1

| **subContractor 1-1**

| @sender [Optional]

| | id 1-1

| | | @numberingOrg [Optional]

| | legalName 0-1

| | dept 0-1

| | subDept 0-1

| | person 0-1

| | | @email [Optional]

| | | @phone [Optional]

| | | @fax [Optional]

| | street 0-1

| | city 0-1

| | subCountry 0-1

| | country 0-1

| | postCode 0-1

| note 0-99

| | @numberingOrg [Optional]

| | @codeList [Optional]

| | @noteLabel [Optional]

| **GWlbody 1-1**

| | **GWlitem 1-unbounded**

| | | lineN 1-1

| | | | @VAT [Optional]

| | | lineID 0-1

| | | **refDoc 0-1**

| | | | @docType [Required]

| | | | | docID 1-2

| | | | | | @numberingOrg [Optional]

| | | | | docDate 0-1

| | | | | | @dateForm [Optional]

| | | | | season 0-1

| | | | | | @numberingOrg [Optional]

| | | | | | @codeList [Optional]

| | | | | | @listName [Optional]

| | | | | | @listVersion [Optional]

| | | | | itemID 0-1

attachment 0-1

@uid [Optional]
| fileName 0-1
| *@numberingOrg [Optional]*
| binaryObject 0-1
| *@format [Optional]*
| *@mime [Optional]*
| *@encoding [Optional]*
| *@characterSet [Optional]*
| **externalReference 0-99**
| uri 1-1
| *@isURL [Optional] [Default= true]*
| mimeTypeCode 0-1
| formatCode 0-1
| encodingCode 0-1
| characterSetCode 0-1

- choose -

garmentPartCode 1-1

@numberingOrg [Optional]
| gPart 1-1
| mod 1-1
| *@numberingOrg [Optional]*
| *@codeList [Optional]*
| *@listName [Optional]*
| *@listVersion [Optional]*
| fabric 0-1
| *@numberingOrg [Optional]*
| *@codeList [Optional]*
| *@listName [Optional]*
| *@listVersion [Optional]*
| color 0-1
| *@numberingOrg [Optional]*
| *@codeList [Optional]*
| *@listName [Optional]*
| *@listVersion [Optional]*
| added 0-19
| *@numberingOrg [Optional]*
| *@addType [Optional]*
| size 0-1
| *@codeList [Optional]*
| description 0-unbounded
| *@ln [Optional]*

- or -

garmentCode 1-1

@numberingOrg [Optional]

- choose -

garmentCodeB 1-1

@numberingOrg [Optional]
| mod 1-1
| *@numberingOrg [Optional]*
| *@codeList [Optional]*
| *@listName [Optional]*
| *@listVersion [Optional]*
| fabric 0-1
| *@numberingOrg [Optional]*
| *@codeList [Optional]*
| *@listName [Optional]*
| *@listVersion [Optional]*
| color 0-1
| *@numberingOrg [Optional]*
| *@codeList [Optional]*

```

| | | | @listName [Optional]
| | | | @listVersion [Optional]
| | | | garmentVariant 0-9
| | | |   variantType 1-1
| | | |     @numberingOrg [Optional]
| | | |     @codeList [Optional]
| | | |     @listName [Optional]
| | | |     @listVersion [Optional]
| | | |   variantCode 1-1
| | | |     @numberingOrg [Optional]
| | | |     @codeList [Optional]
| | | |     @listName [Optional]
| | | |     @listVersion [Optional]
| | | | drop 0-1
| | | |   @codeList [Optional]
| | | | size 0-1
| | | |   @codeList [Optional]
| | | | artGroup 0-1
| | | |   @numberingOrg [Optional]
| | | |   @codeList [Optional]
| | | |   @listName [Optional]
| | | |   @listVersion [Optional]
| | | | added 0-9
| | | |   @numberingOrg [Optional]
| | | |   @addType [Optional]
| | | | description 0-unbounded
| | | |   @ln [Optional]
| | | | - or -
| | | | garmentCodeA 1-1
| | | |   art 1-1
| | | |   @numberingOrg [Optional]
| | | |   @codeList [Optional]
| | | |   @listName [Optional]
| | | |   @listVersion [Optional]
| | | | description 0-unbounded
| | | |   @ln [Optional]
| | | | - end choose -
| | | | - end choose -
| | | | inventory 1-9
| | | |   @invType [Required]
| | | |   qty 1-2
| | | |     @um [Required]
| | | |   location 0-1
| | | |     @LRI [Optional]
| | | | - choose -
| | | |   serialN 0-unbounded
| | | |     @numberingOrg [Optional]
| | | |     @idQualifier [Optional]
| | | | - or -
| | | | itemsList 0-1
| | | |   qualityLevel 0-1
| | | |     @numberingOrg [Optional]
| | | |     @codeList [Optional]
| | | |     @listName [Optional]
| | | |     @listVersion [Optional]
| | | |   itemIdentification 1-unbounded
| | | |     serialN 1-9
| | | |     @numberingOrg [Optional]
| | | |     @idQualifier [Optional]
| | | | - end choose -
| | | | actualPackageUnit 0-unbounded

```

```

| | | | @packageLevel [Optional]
| | | | | packageldentification 1-1
| | | | | packageN 1-1
| | | | | @numberingOrg [Optional]
| | | | | @packageContainerN [Optional]
| | | | | serialN 0-9
| | | | | @numberingOrg [Optional]
| | | | | @idQualifier [Optional]
| | | | - choose -
| | | | | packageText 0-1
| | | | - or -
| | | | | package 0-1
| | | | - end choose -
| | | | | packageModelCode 0-1
| | | | | @numberingOrg [Optional]
| | | | | volume 0-1
| | | | | @um [Required]
| | | | | netWeight 0-1
| | | | | @um [Required]
| | | | | grossWeight 0-1
| | | | | @um [Required]
| | | | | packageDim 0-1
| | | | | length 1-1
| | | | | @um [Required]
| | | | | width 0-1
| | | | | @um [Required]
| | | | | height 0-1
| | | | | @um [Required]
| | | | | actualItemsPerPackage 0-1
| | | | | packagesList 0-1
| | | | | | packageldentification 1-unbounded
| | | | | | packageN 1-1
| | | | | | @numberingOrg [Optional]
| | | | | | @packageContainerN [Optional]
| | | | | | serialN 0-9
| | | | | | @numberingOrg [Optional]
| | | | | | @idQualifier [Optional]
| | | | | | itemsList 0-1
| | | | | | qualityLevel 0-1
| | | | | | @numberingOrg [Optional]
| | | | | | @codeList [Optional]
| | | | | | @listName [Optional]
| | | | | | @listVersion [Optional]
| | | | | | itemIdentification 1-unbounded
| | | | | | serialN 1-9
| | | | | | @numberingOrg [Optional]
| | | | | | @idQualifier [Optional]
| | | | | note 0-99
| | | | | @numberingOrg [Optional]
| | | | | @codeList [Optional]
| | | | | @noteLabel [Optional]
| | | | | EPCList 0-1
| | | | | EPC 1-unbounded
| | | | | @numberingOrg [Optional]
| | | | | @TID [Optional]
| | | | note 0-99
| | | | @numberingOrg [Optional]
| | | | @codeList [Optional]
| | | | @noteLabel [Optional]

```


2.2 Detailed description of document elements

Following tables show all elements (complex and simple) used in this document. Description includes: 1) element's information: xml tag, name, brief description, data type and syntax constraints; 2) information about use of the element in a particular position in the document: xpath and possible associated notes.

2.2.1 Complex elements (Aggregate Business Information Entities)

Complex elements are those elements whose content is composed of other elements (childs). Complex elements are alphabetically ordered.

actualPackageUnit	description and identification of a single transport package (XPath GARWorkInv/GWlbody/GWlitem/inventory/actualPackageUnit) 0-unbounded
attachment	an attached document. An attachment can refer to an external document or be included with the document being exchanged (XPath GARWorkInv/GWlheader/refDoc/attachment) 0-1 (XPath GARWorkInv/GWlbody/GWlitem/refDoc/attachment) 0-1
buyer	details of the Buyer (party that buys the good or service that is object of the current collaborative process) - base type: Nad, (XPath GARWorkInv/GWlheader/buyer) 1-1
EPClist	list of identifiers used for tracing a physical item with RFID technology (XPath GARWorkInv/GWlbody/GWlitem/inventory/EPClist) 0-1 - note: <i>DEPRECATED, use serialIN or itemsList</i>
externalReference	details about an external object, such as a document stored at a remote location (XPath GARWorkInv/GWlbody/GWlitem/refDoc/attachment/externalReference) 0-99 (XPath GARWorkInv/GWlheader/refDoc/attachment/externalReference) 0-99
garmentCode	codification of the garment product (XPath GARWorkInv/GWlbody/GWlitem/garmentCode) 1-1
garmentCodeA	codification of the garment product- type A (XPath GARWorkInv/GWlbody/GWlitem/garmentCode/garmentCodeA) 1-1 - note: <i>here the barcode EAN-13 or EAN-8 should be specified</i>
garmentCodeB	codification of the garment product - type B (XPath GARWorkInv/GWlbody/GWlitem/garmentCode/garmentCodeB) 1-1
garmentPartCode	codification of the component or part of a fashion article (XPath GARWorkInv/GWlbody/GWlitem/garmentPartCode) 1-1
garmentVariant	garment product variant (XPath GARWorkInv/GWlbody/GWlitem/garmentCode/garmentCodeB/garmentVariant) 0-9
GWlbody	body of the document GARMENT IN WORK INVENTORY REPORT (XPath GARWorkInv/GWlbody) 1-1
GWlheader	header of the document GARMENT IN WORK INVENTORY REPORT (XPath GARWorkInv/GWlheader) 1-1
GWlitem	line item of the document GARMENT IN WORK INVENTORY REPORT (XPath GARWorkInv/GWlbody/GWlitem) 1-unbounded
inventory	details of a stock of goods with reference to the manufacturing process: item quantity per class of stock (XPath GARWorkInv/GWlbody/GWlitem/inventory) 1-9

itemIdentification	<p>serial identification of a product unit (XPath GARWorkInv/GWlbody/GWlitem/inventory/itemsList/itemIdentification) 1-unbounded</p> <p>- note: <i>identification of the single product unit contained in the list</i> (XPath GARWorkInv/GWlbody/GWlitem/inventory/actualPackageUnit/itemsList/itemIdentification) 1-unbounded</p> <p>- note: <i>identification of the single product unit contained in the list</i></p>
itemsList	<p>list of the single product units (XPath GARWorkInv/GWlbody/GWlitem/inventory/actualPackageUnit/itemsList) 0-1 (XPath GARWorkInv/GWlbody/GWlitem/inventory/itemsList) 0-1</p> <p>- note: <i>Use this element when reporting serial numbers referring to different coding methods for the same article</i></p>
packageDim	<p>dimensions of a transport package (XPath GARWorkInv/GWlbody/GWlitem/inventory/actualPackageUnit/packageDim) 0-1</p>
packageIdentification	<p>serial identification of a package (XPath GARWorkInv/GWlbody/GWlitem/inventory/actualPackageUnit/packagesList/packageIdentification) 1-unbounded</p> <p>- note: <i>identification of the single package contained in the list</i> (XPath GARWorkInv/GWlbody/GWlitem/inventory/actualPackageUnit/packageIdentification) 1-1</p>
packagesList	<p>list of single packages (XPath GARWorkInv/GWlbody/GWlitem/inventory/actualPackageUnit/packagesList) 0-1</p> <p>- note: <i>list of packages contained within the actual package (thus with lower level). All the packages in the list should preferably have the same level.</i></p>
refDoc	<p>identification of a document and of an item thereof, to which the message makes reference (XPath GARWorkInv/GWlbody/GWlitem/refDoc) 0-1 (XPath GARWorkInv/GWlheader/refDoc) 0-9</p>
subContractor	<p>details of the Sub-contractor - base type: Nad, (XPath GARWorkInv/GWlheader/subContractor) 1-1</p>

2.2.2 Simple elements (Basic Business Information Entities)

Simple elements are those elements whose content is characterized by a data type plus a domain of possible values. Simple elements are alphabetically ordered.

actualItemsPerPackage	<p>the quantity of items actually contained in the package - base type: decimal, (XPath GARWorkInv/GWlbody/GWlitem/inventory/actualPackageUnit/actualItemsPerPackage) 0-1</p>
added	<p>additional code of the product (complementing the formers) - base type: string, max length: 80, (XPath GARWorkInv/GWlbody/GWlitem/garmentCode/garmentCodeB/added) 0-9 (XPath GARWorkInv/GWlbody/GWlitem/garmentPartCode/added) 0-19</p>

additionalIdentifier	<p>additional identification code of a Party, for example customs registries or others</p> <p>- base type: string, max length: 15, (XPath GARWorkInv/GWlheader/buyer/additionalIdentifier) 0-9</p> <p>- note: <i>identifiers for example for exports, such as MID (Manufacturer Identification Code), EORI (E.O.R.I. - Economic Operator Registration and Identification)</i></p>
@addType	<p>qualifier of the additional coding of a product</p> <p>- base type: string, cod. table: T44 http://www.ebiz.enea.it/moda-ml/repository/codelist/draft/gc_T44.xml (XPath GARWorkInv/GWlbody/GWlitem/garmentCode/garmentCodeB/added/@addType) [Optional]</p> <p>- nota: <i>addType allows the clarification of the meaning of the added element content; it is strongly suggested to use it always.</i> (XPath GARWorkInv/GWlbody/GWlitem/garmentPartCode/added/@addType) [Optional]</p> <p>- nota: <i>addType allows the clarification of the meaning of the added element content; it is strongly suggested to use it always.</i></p>
art	<p>article number of the product</p> <p>- base type: string, max length: 80, (XPath GARWorkInv/GWlbody/GWlitem/garmentCode/garmentCodeA/art) 1-1</p>
artGroup	<p>code identifying a class of products</p> <p>- base type: string, max length: 40, (XPath GARWorkInv/GWlbody/GWlitem/garmentCode/garmentCodeB/artGroup) 0-1</p>
binaryObject	<p>a binary large object containing an attached document</p> <p>- base type: base64Binary, (XPath GARWorkInv/GWlbody/GWlitem/refDoc/attachment/binaryObject) 0-1 (XPath GARWorkInv/GWlheader/refDoc/attachment/binaryObject) 0-1</p>
@characterSet	<p>the character set of the binary object if the mime type is text</p> <p>- base type: normalizedString, (XPath GARWorkInv/GWlbody/GWlitem/refDoc/attachment/binaryObject/@characterSet) [Optional] (XPath GARWorkInv/GWlheader/refDoc/attachment/binaryObject/@characterSet) [Optional]</p>
characterSetCode	<p>the character set of an external document</p> <p>- base type: normalizedString, (XPath GARWorkInv/GWlheader/refDoc/attachment/externalReference/characterSetCode) 0-1 (XPath GARWorkInv/GWlbody/GWlitem/refDoc/attachment/externalReference/characterSetCode) 0-1</p>
city	<p>name of the city (town, village)</p> <p>- base type: string, max length: 40, (XPath GARWorkInv/GWlheader/buyer/city) 0-1 (XPath GARWorkInv/GWlheader/subContractor/city) 0-1</p>
@codeList	<p>it specifies the URL where the list of codes used to make an instance of the element can be found</p> <p>- base type: string, max length: 255, (XPath GARWorkInv/GWlbody/GWlitem/garmentPartCode/color/@codeList) [Optional]</p> <p>- nota: <i>this attribute could be used as alternative to the others</i> (XPath GARWorkInv/GWlheader/refDoc/season/@codeList) [Optional] (XPath GARWorkInv/GWlbody/GWlitem/garmentPartCode/size/@codeList) [Optional]</p>

	<p>(XPath GARWorkInv/GWlbody/GWlitem/garmentPartCode/fabric/@codeList) [Optional]</p> <p>- nota: <i>this attribute should be ALTERNATIVE to the others</i></p> <p>(XPath GARWorkInv/GWlheader/note/@codeList) [Optional]</p> <p>- nota: <i>must be used to provide (URL) the list of codes used in "noteLabel"</i></p> <p>(XPath GARWorkInv/GWlbody/GWlitem/refDoc/season/@codeList) [Optional]</p> <p>(XPath GARWorkInv/GWlbody/GWlitem/garmentPartCode/mod/@codeList) [Optional]</p> <p>- nota: <i>this attribute should be ALTERNATIVE to the others</i></p> <p>(XPath GARWorkInv/GWlbody/GWlitem/inventory/itemsList/qualityLevel/@codeList) [Optional]</p> <p>(XPath GARWorkInv/GWlbody/GWlitem/garmentCode/garmentCodeA/art/@codeList) [Optional]</p> <p>- nota: <i>this attribute should be ALTERNATIVE to the others</i></p> <p>(XPath GARWorkInv/GWlbody/GWlitem/garmentCode/garmentCodeB/artGroup/@codeList) [Optional]</p> <p>- nota: <i>this attribute should be ALTERNATIVE to the others</i></p> <p>(XPath GARWorkInv/GWlbody/GWlitem/note/@codeList) [Optional]</p> <p>- nota: <i>must be used to provide (URL) the list of codes used in "noteLabel"</i></p> <p>(XPath GARWorkInv/GWlbody/GWlitem/inventory/actualPackageUnit/note/@codeList) [Optional]</p> <p>- nota: <i>must be used to provide (URL) the list of codes used in "noteLabel"</i></p> <p>(XPath GARWorkInv/GWlbody/GWlitem/inventory/actualPackageUnit/itemsList/qualityLevel/@codeList) [Optional]</p> <p>(XPath GARWorkInv/GWlbody/GWlitem/garmentCode/garmentCodeB/size/@codeList) [Optional]</p> <p>(XPath GARWorkInv/GWlbody/GWlitem/garmentCode/garmentCodeB/color/@codeList) [Optional]</p> <p>- nota: <i>this attribute could be used as alternative to the others</i></p> <p>(XPath GARWorkInv/GWlbody/GWlitem/garmentCode/garmentCodeB/fabric/@codeList) [Optional]</p> <p>- nota: <i>this attribute should be ALTERNATIVE to the others</i></p> <p>(XPath GARWorkInv/GWlbody/GWlitem/garmentCode/garmentCodeB/mod/@codeList) [Optional]</p> <p>- nota: <i>this attribute should be ALTERNATIVE to the others</i></p> <p>(XPath GARWorkInv/GWlbody/GWlitem/garmentCode/garmentCodeB/drop/@codeList) [Optional]</p> <p>(XPath GARWorkInv/GWlbody/GWlitem/garmentCode/garmentCodeB/garmentVariant/variantCode/@codeList) [Optional]</p> <p>- nota: <i>this attribute should be ALTERNATIVE to the others</i></p> <p>(XPath GARWorkInv/GWlbody/GWlitem/garmentCode/garmentCodeB/garmentVariant/variantType/@codeList) [Optional]</p> <p>- nota: <i>this attribute should be ALTERNATIVE to the others</i></p>
color	<p>colour number of the product, when not included in the model or fabric code</p> <p>- base type: string, max length: 15,</p> <p>(XPath GARWorkInv/GWlbody/GWlitem/garmentPartCode/color) 0-1</p> <p>- note: <i>when a garment component, it should be the code assigned to the garment article</i></p> <p>(XPath GARWorkInv/GWlbody/GWlitem/garmentCode/garmentCodeB/color) 0-1</p>
country	<p>code of the nation</p> <p>- base type: string, cod. table: T10</p> <p>http://www.ebiz.enea.it/moda-ml/repository/codelist/draft/gc_T10.xml</p>

	(XPath GARWorkInv/GWIheader/subContractor/country) 0-1 (XPath GARWorkInv/GWIheader/buyer/country) 0-1
@dateForm	format used for the date - base type: string, cod. table: NT29 http://www.ebiz.enea.it/moda-ml/repository/codelist/draft/gc_NT29.xml (XPath GARWorkInv/GWIheader/msgDate/@dateForm) [Optional] (XPath GARWorkInv/GWIheader/inventoryDate/@dateForm) [Optional] (XPath GARWorkInv/GWIheader/refDoc/docDate/@dateForm) [Optional] (XPath GARWorkInv/GWIbody/GWlitem/refDoc/docDate/@dateForm) [Optional]
dept	name or code of a contact department within a Party - base type: string, max length: 40, (XPath GARWorkInv/GWIheader/subContractor/dept) 0-1 (XPath GARWorkInv/GWIheader/buyer/dept) 0-1
description	free text description. The content of the element must be unique, it might be translated and repeated into more languages (thus no more than one instance for each language). - base type: string, max length: 250, (XPath GARWorkInv/GWIbody/GWlitem/garmentCode/garmentCodeB/description) 0-unbounded - note: <i>Product description</i> (XPath GARWorkInv/GWIbody/GWlitem/garmentPartCode/description) 0-unbounded - note: <i>Product part description</i> (XPath GARWorkInv/GWIbody/GWlitem/garmentCode/garmentCodeA/description) 0-unbounded - note: <i>Product description</i>
docDate	date of issue of the referenced document, according to one of the patterns YYYY-MM-DD, YYYY-MM-DD:HH-MM or YYYY-WW. - base type: string, (XPath GARWorkInv/GWIheader/refDoc/docDate) 0-1 (XPath GARWorkInv/GWIbody/GWlitem/refDoc/docDate) 0-1
docID	identification number of the referenced document SINCE 2008-1 ITS USE IN THE HEADER IS DISCOURAGED (REPLACED BY msgID) - base type: string, max length: 80, (XPath GARWorkInv/GWIheader/refDoc/docID) 1-2 (XPath GARWorkInv/GWIheader/docID) 0-1 (XPath GARWorkInv/GWIbody/GWlitem/refDoc/docID) 1-2
@docType	type or class to which the referenced document belongs - base type: string, cod. table: T21 http://www.ebiz.enea.it/moda-ml/repository/codelist/draft/gc_T21.xml (XPath GARWorkInv/GWIbody/GWlitem/refDoc/@docType) [Required] (XPath GARWorkInv/GWIheader/refDoc/@docType) [Required]
drop	drop number of the garment - base type: string, max length: 15, (XPath GARWorkInv/GWIbody/GWlitem/garmentCode/garmentCodeB/drop) 0-1 - note: <i>Fill this element if the drop is the same for all the sizes of the model. Otherway specify it within the csRange element</i>
@email	electronic mail address of the contact person within a Party - base type: string, max length: 250, (XPath GARWorkInv/GWIheader/subContractor/person/@email) [Optional] (XPath GARWorkInv/GWIheader/buyer/person/@email) [Optional]
@encoding	specifies the decoding algorithm of the binary object - base type: normalizedString, (XPath GARWorkInv/GWIbody/GWlitem/refDoc/attachment/binaryObject/@encoding) [Optional]

	(XPath GARWorkInv/GWlheader/refDoc/attachment/binaryObject/@encoding) [Optional]
encodingCode	the encoding/decoding algorithm used with the external object - base type: normalizedString, (XPath GARWorkInv/GWlheader/refDoc/attachment/externalReference/encodingCode) 0-1 (XPath GARWorkInv/GWlbody/GWlitem/refDoc/attachment/externalReference/encodingCode) 0-1
EPC	serial identifier used for tracing a physical item with RFID technology - base type: string, (XPath GARWorkInv/GWlbody/GWlitem/inventory/EPClist/EPC) 1-unbounded
fabric	fabric number of the garment - base type: string, max length: 15, (XPath GARWorkInv/GWlbody/GWlitem/garmentCode/garmentCodeB/fabric) 0-1 (XPath GARWorkInv/GWlbody/GWlitem/garmentPartCode/fabric) 0-1 - note: <i>when a garment component, it should be the code assigned to the garment article</i>
@fax	fax number of the contact person within a Party - base type: string, max length: 35, (XPath GARWorkInv/GWlheader/buyer/person/@fax) [Optional] (XPath GARWorkInv/GWlheader/subContractor/person/@fax) [Optional]
fileName	unique identifier (name) of the file - base type: string, max length: 255, (XPath GARWorkInv/GWlbody/GWlitem/refDoc/attachment/fileName) 0-1 (XPath GARWorkInv/GWlheader/refDoc/attachment/fileName) 0-1
@format	the format of the binary content - base type: string, (XPath GARWorkInv/GWlbody/GWlitem/refDoc/attachment/binaryObject/@format) [Optional] (XPath GARWorkInv/GWlheader/refDoc/attachment/binaryObject/@format) [Optional]
formatCode	the format of the external object - base type: normalizedString, (XPath GARWorkInv/GWlbody/GWlitem/refDoc/attachment/externalReference/formatCode) 0-1 (XPath GARWorkInv/GWlheader/refDoc/attachment/externalReference/formatCode) 0-1
gPart	code specifying the type of component or part of a fashion product (sleeve, neck, ...) - base type: string, cod. table: T48 http://www.ebiz.enea.it/moda-ml/repository/codelist/draft/gc_T48.xml (XPath GARWorkInv/GWlbody/GWlitem/garmentPartCode/gPart) 1-1
grossWeight	the gross weight, declared for transport or customs purpose - base type: decimal, min inclusive: 0, fraction digits: 2, (XPath GARWorkInv/GWlbody/GWlitem/inventory/actualPackageUnit/grossWeight) 0-1
height	effective height of a specified object - base type: decimal, min inclusive: 0, fraction digits: 2, (XPath GARWorkInv/GWlbody/GWlitem/inventory/actualPackageUnit/packageDim/height) 0-1

id	<p>primary identification code of a Party; it is recommended the format: nation code (ISO 3166) + VAT identification number (11 crt), with the qualifier "numberingOrg"= MF</p> <p>- base type: string, max length: 15, (XPath GARWorkInv/GWlheader/subContractor/id) 1-1 (XPath GARWorkInv/GWlheader/buyer/id) 1-1</p>
@idQualifier	<p>Qualification of the identifier.</p> <p>- base type: string, (XPath GARWorkInv/GWlbody/GWlitem/inventory/itemsList/itemIdentification/serialN/@idQualifier) [Optional]</p> <p>- nota: <i>this attribute should be used when the numberingOrg attribute is not enough to declare the type of serial identifier</i> (XPath GARWorkInv/GWlheader/buyer/additionalIdentifier/@idQualifier) [Optional]</p> <p>- nota: <i>this attribute should be used when the numberingOrg attribute is not enough to declare the type of identifier</i> (XPath GARWorkInv/GWlbody/GWlitem/inventory/actualPackageUnit/packageIdentification/serialN/@idQualifier) [Optional]</p> <p>- nota: <i>this attribute should be used when the numberingOrg attribute is not enough to declare the type of serial identifier</i> (XPath GARWorkInv/GWlbody/GWlitem/inventory/actualPackageUnit/itemsList/itemIdentification/serialN/@idQualifier) [Optional]</p> <p>- nota: <i>this attribute should be used when the numberingOrg attribute is not enough to declare the type of serial identifier</i> (XPath GARWorkInv/GWlbody/GWlitem/inventory/serialN/@idQualifier) [Optional]</p> <p>- nota: <i>this attribute should be used when the numberingOrg attribute is not enough to declare the type of serial identifier</i> (XPath GARWorkInv/GWlbody/GWlitem/inventory/actualPackageUnit/packagesList/packageIdentification/serialN/@idQualifier) [Optional]</p> <p>- nota: <i>this attribute should be used when the numberingOrg attribute is not enough to declare the type of serial identifier</i></p>
inventoryDate	<p>date in which the inventory was done, according to one of the patterns YYYY-MM-DD, YYYY-MM-DD:HH-MM or YYYY-WW.</p> <p>- base type: string, (XPath GARWorkInv/GWlheader/inventoryDate) 1-1</p>
@invType	<p>code classifying a stock of goods with reference to the manufacturing process</p> <p>- base type: string, cod. table: T47 http://www.ebiz.enea.it/moda-ml/repository/codelist/draft/gc_T47.xml (XPath GARWorkInv/GWlbody/GWlitem/inventory/@invType) [Required]</p>
@isURL	<p>it indicates if the referred element is an URL (true) or not (false)</p> <p>- base type: boolean, (XPath GARWorkInv/GWlheader/refDoc/attachment/externalReference/uri/@isURL) [Optional] [Default= true]</p> <p>- nota: <i>usage of URLs is recommended</i> (XPath GARWorkInv/GWlbody/GWlitem/refDoc/attachment/externalReference/uri/@isURL) [Optional] [Default= true]</p> <p>- nota: <i>usage of URLs is recommended</i></p>
itemID	<p>number of the line/item of the referenced document</p> <p>- base type: string, max length: 6, (XPath GARWorkInv/GWlbody/GWlitem/refDoc/itemID) 0-1 (XPath GARWorkInv/GWlheader/refDoc/itemID) 0-1</p>
legalName	<p>legal name of a Party</p> <p>- base type: string, max length: 250, (XPath GARWorkInv/GWlheader/buyer/legalName) 0-1 (XPath GARWorkInv/GWlheader/subContractor/legalName) 0-1</p>

length	<p>effective length of a specified object</p> <ul style="list-style-type: none"> - base type: decimal, min inclusive: 0, fraction digits: 2, (XPath GARWorkInv/GWlbody/GWlitem/inventory/actualPackageUnit/packageDim/length) 1-1 - note: <i>here the maximum dimension must also be specified</i>
lineID	<p>unique identifier of the line item of the business document; it is set by the role that produces the document.</p> <ul style="list-style-type: none"> - base type: string, max length: 30, (XPath GARWorkInv/GWlbody/GWlitem/lineID) 0-1
lineN	<p>number of the line item of the present message (xml document); it is set by the role that produces the document. Usually it is a progressive number, but not always.</p> <ul style="list-style-type: none"> - base type: positiveInteger, min inclusive: 1, max inclusive: 9999, (XPath GARWorkInv/GWlbody/GWlitem/lineN) 1-1
@listName	<p>the name of the list of codes used to make an instance of the element (it might be thought as descriptive element, i.e. 'fabric printing technologies', or not, i.e. "T264")</p> <ul style="list-style-type: none"> - base type: string, max length: 40, (XPath GARWorkInv/GWlbody/GWlitem/garmentPartCode/color/@listName) [Optional] - nota: <i>this attribute should always be used coupled with "numberingOrg"</i> (XPath GARWorkInv/GWlbody/GWlitem/garmentCode/garmentCodeB/mod/@listName) [Optional] - nota: <i>this attribute should always be used coupled with "numberingOrg"</i> (XPath GARWorkInv/GWlbody/GWlitem/garmentCode/garmentCodeB/fabric/@listName) [Optional] - nota: <i>this attribute should always be used coupled with "numberingOrg"</i> (XPath GARWorkInv/GWlbody/GWlitem/garmentCode/garmentCodeA/art/@listName) [Optional] - nota: <i>this attribute should always be used coupled with "numberingOrg"</i> (XPath GARWorkInv/GWlheader/refDoc/season/@listName) [Optional] (XPath GARWorkInv/GWlbody/GWlitem/refDoc/season/@listName) [Optional] - nota: <i>this attribute should always be used coupled with "numberingOrg"</i> (XPath GARWorkInv/GWlbody/GWlitem/garmentCode/garmentCodeB/garmentVariant/variantType/@listName) [Optional] - nota: <i>this attribute should always be used coupled with "numberingOrg"</i> (XPath GARWorkInv/GWlbody/GWlitem/garmentPartCode/mod/@listName) [Optional] - nota: <i>this attribute should always be used coupled with "numberingOrg"</i> (XPath GARWorkInv/GWlbody/GWlitem/garmentCode/garmentCodeB/garmentVariant/variantCode/@listName) [Optional] - nota: <i>this attribute should always be used coupled with "numberingOrg"</i> (XPath GARWorkInv/GWlbody/GWlitem/inventory/itemsList/qualityLevel/@listName) [Optional] (XPath GARWorkInv/GWlbody/GWlitem/garmentCode/garmentCodeB/artGroup/@listName) [Optional] - nota: <i>this attribute should always be used coupled with "numberingOrg"</i> (XPath GARWorkInv/GWlbody/GWlitem/inventory/actualPackageUnit/itemsList/qualityLevel/@listName) [Optional] (XPath GARWorkInv/GWlbody/GWlitem/garmentCode/garmentCodeB/color/@listName) [Optional] - nota: <i>this attribute should always be used coupled with "numberingOrg"</i> (XPath GARWorkInv/GWlbody/GWlitem/garmentPartCode/fabric/@listName) [Optional] - nota: <i>this attribute should always be used coupled with "numberingOrg"</i>

<p>@listVersion</p>	<p>it specifies the version of the list of codes used to make an instance of the element</p> <p>- base type: string, max length: 6, (XPath GARWorkInv/GWlbody/GWlitem/garmentCode/garmentCodeA/art/@listVersion) [Optional]</p> <p>- nota: <i>this attribute should always be used coupled with “numberingOrg” and “listName”</i> (XPath GARWorkInv/GWlbody/GWlitem/garmentCode/garmentCodeB/mod/@listVersion) [Optional]</p> <p>- nota: <i>this attribute should always be used coupled with “numberingOrg” and “listName”</i> (XPath GARWorkInv/GWlbody/GWlitem/garmentCode/garmentCodeB/garmentVariant/variantType/@listVersion) [Optional]</p> <p>- nota: <i>this attribute should always be used coupled with “numberingOrg” and “listName”</i> (XPath GARWorkInv/GWlbody/GWlitem/garmentCode/garmentCodeB/fabric/@listVersion) [Optional]</p> <p>- nota: <i>this attribute should always be used coupled with “numberingOrg” and “listName”</i> (XPath GARWorkInv/GWlbody/GWlitem/inventory/itemsList/qualityLevel/@listVersion) [Optional]</p> <p>(XPath GARWorkInv/GWlbody/GWlitem/garmentCode/garmentCodeB/color/@listVersion) [Optional]</p> <p>- nota: <i>this attribute should always be used coupled with “numberingOrg” and “listName”</i> (XPath GARWorkInv/GWlbody/GWlitem/garmentCode/garmentCodeB/garmentVariant/variantCode/@listVersion) [Optional]</p> <p>- nota: <i>this attribute should always be used coupled with “numberingOrg” and “listName”</i> (XPath GARWorkInv/GWlbody/GWlitem/garmentCode/garmentCodeB/artGroup/@listVersion) [Optional]</p> <p>- nota: <i>this attribute should always be used coupled with “numberingOrg” and “listName”</i> (XPath GARWorkInv/GWlbody/GWlitem/garmentPartCode/color/@listVersion) [Optional]</p> <p>- nota: <i>this attribute should always be used coupled with “numberingOrg” and “listName”</i> (XPath GARWorkInv/GWlbody/GWlitem/refDoc/season/@listVersion) [Optional] (XPath GARWorkInv/GWlbody/GWlitem/garmentPartCode/fabric/@listVersion) [Optional]</p> <p>- nota: <i>this attribute should always be used coupled with “numberingOrg” and “listName”</i> (XPath GARWorkInv/GWlheader/refDoc/season/@listVersion) [Optional] (XPath GARWorkInv/GWlbody/GWlitem/garmentPartCode/mod/@listVersion) [Optional]</p> <p>- nota: <i>this attribute should always be used coupled with “numberingOrg” and “listName”</i> (XPath GARWorkInv/GWlbody/GWlitem/inventory/actualPackageUnit/itemsList/qualityLevel/@listVersion) [Optional]</p>
<p>@ln</p>	<p>Language code.</p> <p>- base type: string, (XPath GARWorkInv/GWlbody/GWlitem/garmentCode/garmentCodeB/description/@ln) [Optional]</p>

	(XPath GARWorkInv/GWlbody/GWlitem/garmentCode/garmentCodeA/description/ @In) [Optional] (XPath GARWorkInv/GWlbody/GWlitem/garmentPartCode/ description/@In) [Optional]
location	specification of a location - base type: string, max length: 40, (XPath GARWorkInv/GWlbody/GWlitem/inventory/location) 0-1
@logo	company logo (URL of the image jpeg or gif). It is recommended that the width of the image does not exceed 640 pixel. - base type: string, max length: 255, (XPath GARWorkInv/GWlheader/buyer/@logo) [Optional]
@LRI	attribute usable to format a string according to a customized User rule (local rule) - base type: string, cod. table: NT3 http://www.ebiz.enea.it/moda-ml/repository/codelist/draft/gc_NT3.xml (XPath GARWorkInv/GWlbody/GWlitem/inventory/location/@LRI) [Optional]
@mime	the mime type of the binary object - base type: normalizedString, (XPath GARWorkInv/GWlbody/GWlitem/refDoc/attachment/ binaryObject/@mime) [Optional] (XPath GARWorkInv/GWlheader/refDoc/attachment/binaryObject/@mime) [Optional]
mimeCode	mime type of the external object - base type: normalizedString, (XPath GARWorkInv/GWlbody/GWlitem/refDoc/attachment/ externalReference/mimeCode) 0-1 (XPath GARWorkInv/GWlheader/refDoc/attachment/externalReference/mimeCode) 0-1
mod	model number of the garment - base type: string, max length: 15, (XPath GARWorkInv/GWlbody/GWlitem/garmentPartCode/mod) 1-1 - note: <i>when a garment component, it should be the code assigned to the garment article</i> (XPath GARWorkInv/GWlbody/GWlitem/garmentCode/garmentCodeB/mod) 1-1
msgDate	date of issue of the present message (xml document), according to one of the patterns YYYY-MM-DD, YYYY-MM-DD:HH-MM or YYYY-WW. - base type: string, (XPath GARWorkInv/GWlheader/msgDate) 1-1
@msgfunction	function performed by the present message with regards to the transmission - base type: string, cod. table: NT18 http://www.ebiz.enea.it/moda-ml/repository/codelist/draft/gc_NT18.xml (XPath GARWorkInv/@msgfunction) [Optional] [Default= OR]
msgID	key identifier of the business document in the information system of the issuing Party. In case of more despatches of the same business document, it is unchanged. - base type: string, max length: 35, (XPath GARWorkInv/GWlheader/msgID) 0-1
msgN	identification number given to the message (xml document) by its issuer. In case of more despatches of the same business document, it changes. - base type: string, max length: 35, (XPath GARWorkInv/GWlheader/msgN) 1-1

netWeight	<p>the net weight declared for transport or customs purpose</p> <ul style="list-style-type: none"> - base type: decimal, min inclusive: 0, fraction digits: 2, <p>(XPath GARWorkInv/GWlbody/GWlitem/inventory/actualPackageUnit/netWeight) 0-1</p>
note	<p>free text or structured (computer processing) note. For note structuring use the attributes "noteLabel" and "codelist"</p> <ul style="list-style-type: none"> - base type: string, max length: 350, <p>(XPath GARWorkInv/GWlbody/GWlitem/note) 0-99 (XPath GARWorkInv/GWlheader/note) 0-99 (XPath GARWorkInv/GWlbody/GWlitem/inventory/actualPackageUnit/note) 0-99</p>
@noteLabel	<p>subject qualifier of a note</p> <ul style="list-style-type: none"> - base type: string, max length: 35, <p>(XPath GARWorkInv/GWlbody/GWlitem/inventory/actualPackageUnit/note/@noteLabel) [Optional]</p> <ul style="list-style-type: none"> - nota: <i>must be used to qualify the subject of the note</i> (XPath GARWorkInv/GWlheader/note/@noteLabel) [Optional] - nota: <i>must be used to qualify the subject of the note</i> (XPath GARWorkInv/GWlbody/GWlitem/note/@noteLabel) [Optional] - nota: <i>must be used to qualify the subject of the note</i>
@numberingOrg	<p>code specifying the organisation who has created or owns the coding or numbering system</p> <ul style="list-style-type: none"> - base type: string, cod. table: NT6 <p>http://www.ebiz.enea.it/moda-ml/repository/codelist/draft/gc_NT6.xml</p> <p>(XPath GARWorkInv/GWlbody/GWlitem/inventory/EPClist/EPC/@numberingOrg) [Optional] (XPath GARWorkInv/GWlbody/GWlitem/inventory/actualPackageUnit/note/@numberingOrg) [Optional] (XPath GARWorkInv/GWlbody/GWlitem/note/@numberingOrg) [Optional] (XPath GARWorkInv/GWlbody/GWlitem/inventory/actualPackageUnit/packageMode/ICode/@numberingOrg) [Optional] (XPath GARWorkInv/GWlheader/docID/@numberingOrg) [Optional]</p> <ul style="list-style-type: none"> - nota: <i>here can be specified whose document numbering is used (e.g.: Client, Supplier, ..)</i> <p>(XPath GARWorkInv/GWlbody/GWlitem/inventory/actualPackageUnit/packageIdentification/serialN/@numberingOrg) [Optional]</p> <ul style="list-style-type: none"> - nota: <i>here the issuer of the serial number must be specified (when different from the Supplier)</i> <p>(XPath GARWorkInv/GWlbody/GWlitem/inventory/itemsList/itemIdentification/serialN/@numberingOrg) [Optional]</p> <ul style="list-style-type: none"> - nota: <i>here the issuer of the serial number must be specified (when different from the Supplier)</i> <p>(XPath GARWorkInv/GWlbody/GWlitem/inventory/actualPackageUnit/packageIdentification/packageN/@numberingOrg) [Optional] (XPath GARWorkInv/GWlbody/GWlitem/inventory/itemsList/qualityLevel/@numberingOrg) [Optional] (XPath GARWorkInv/GWlbody/GWlitem/inventory/serialN/@numberingOrg) [Optional]</p> <ul style="list-style-type: none"> - nota: <i>here the issuer of the serial number must be specified (when different from the Supplier)</i> <p>(XPath GARWorkInv/GWlbody/GWlitem/inventory/actualPackageUnit/itemsList/itemIdentification/serialN/@numberingOrg) [Optional]</p> <ul style="list-style-type: none"> - nota: <i>here the issuer of the serial number must be specified (when different from the Supplier)</i>

	<p>(XPath GARWorkInv/GWlbody/GWlitem/inventory/actualPackageUnit/itemsList/qualityLevel/@numberingOrg) [Optional]</p> <p>(XPath GARWorkInv/GWlbody/GWlitem/inventory/actualPackageUnit/packagesList/packageIdentification/packageN/@numberingOrg) [Optional]</p> <p>(XPath GARWorkInv/GWlbody/GWlitem/inventory/actualPackageUnit/packagesList/packageIdentification/serialN/@numberingOrg) [Optional] - nota: <i>here the issuer of the serial number must be specified (when different from the Supplier)</i></p> <p>(XPath GARWorkInv/GWlbody/GWlitem/garmentCode/garmentCodeB/color/@numberingOrg) [Optional] - nota: <i>this attribute should be used either single or coupled with "listName" and "listVersion"</i></p> <p>(XPath GARWorkInv/GWlbody/GWlitem/garmentCode/garmentCodeB/fabric/@numberingOrg) [Optional] - nota: <i>this attribute should be used either single or coupled with "listName" and "listVersion"</i></p> <p>(XPath GARWorkInv/GWlbody/GWlitem/garmentPartCode/fabric/@numberingOrg) [Optional] - nota: <i>this attribute should be used either single or coupled with "listName" and "listVersion"</i></p> <p>(XPath GARWorkInv/GWlheader/buyer/additionalIdentifier/@numberingOrg) [Optional] - nota: <i>here the issuer of the identifier must be specified</i></p> <p>(XPath GARWorkInv/GWlbody/GWlitem/garmentCode/garmentCodeB/garmentVariant/variantType/@numberingOrg) [Optional] - nota: <i>this attribute should be used either single or coupled with "listName" and "listVersion"</i></p> <p>(XPath GARWorkInv/GWlheader/note/@numberingOrg) [Optional]</p> <p>(XPath GARWorkInv/GWlbody/GWlitem/garmentPartCode/added/@numberingOrg) [Optional]</p> <p>(XPath GARWorkInv/GWlbody/GWlitem/garmentCode/@numberingOrg) [Optional]</p> <p>(XPath GARWorkInv/GWlheader/refDoc/season/@numberingOrg) [Optional]</p> <p>(XPath GARWorkInv/GWlbody/GWlitem/garmentCode/garmentCodeB/mod/@numberingOrg) [Optional] - nota: <i>this attribute should be ALTERNATIVE to the others</i></p> <p>(XPath GARWorkInv/GWlbody/GWlitem/garmentCode/garmentCodeB/@numberingOrg) [Optional]</p> <p>(XPath GARWorkInv/GWlbody/GWlitem/garmentPartCode/color/@numberingOrg) [Optional] - nota: <i>this attribute should be used either single or coupled with "listName" and "listVersion"</i></p> <p>(XPath GARWorkInv/GWlbody/GWlitem/garmentPartCode/mod/@numberingOrg) [Optional] - nota: <i>this attribute should be ALTERNATIVE to the others</i></p> <p>(XPath GARWorkInv/GWlbody/GWlitem/garmentCode/garmentCodeB/artGroup/@numberingOrg) [Optional] - nota: <i>this attribute should be used either single or coupled with "listName" and "listVersion"</i></p> <p>(XPath GARWorkInv/GWlbody/GWlitem/refDoc/season/@numberingOrg) [Optional]</p> <p>(XPath GARWorkInv/GWlheader/subContractor/id/@numberingOrg) [Optional]</p> <p>(XPath GARWorkInv/GWlbody/GWlitem/garmentCode/garmentCodeA/art/@numberingOrg) [Optional] - nota: <i>this attribute should be used either single or coupled with "listName" and "listVersion"</i></p> <p>(XPath GARWorkInv/GWlheader/refDoc/docID/@numberingOrg) [Optional]</p>
--	--

	<p>- nota: <i>here can be specified whose document numbering is used (e.g.: Client, Supplier, ..)</i> (XPath GARWorkInv/GWlbody/GWlitem/garmentCode/garmentCodeB/added/@numberingOrg) [Optional] (XPath GARWorkInv/GWlheader/buyer/id/@numberingOrg) [Optional] (XPath GARWorkInv/GWlbody/GWlitem/garmentCode/garmentCodeB/garmentVariant/variantCode/@numberingOrg) [Optional] - nota: <i>this attribute should be used either single or coupled with "listName" and "listVersion"</i> (XPath GARWorkInv/GWlheader/refDoc/attachment/fileName/@numberingOrg) [Optional] (XPath GARWorkInv/GWlbody/GWlitem/refDoc/attachment/fileName/@numberingOrg) [Optional] (XPath GARWorkInv/GWlbody/GWlitem/refDoc/docID/@numberingOrg) [Optional] - nota: <i>here can be specified whose document numbering is used (e.g.: Client, Supplier, ..)</i> (XPath GARWorkInv/GWlbody/GWlitem/garmentPartCode/@numberingOrg) [Optional]</p>
package	<p>code specifying the type of transport package - base type: string, cod. table: T11 http://www.ebiz.enea.it/moda-ml/repository/codelist/draft/gc_T11.xml (XPath GARWorkInv/GWlbody/GWlitem/inventory/actualPackageUnit/package) 0-1</p>
@packageContainerN	<p>reference usable to indicate the outer package containing this package - base type: string, max length: 40, (XPath GARWorkInv/GWlbody/GWlitem/inventory/actualPackageUnit/packagesList/packageIdentification/packageN/@packageContainerN) [Optional] (XPath GARWorkInv/GWlbody/GWlitem/inventory/actualPackageUnit/packageIdentification/packageN/@packageContainerN) [Optional]</p>
@packageLevel	<p>level used to indicate the hierarchical structure of the packages (from outer to inner levels) - base type: positiveInteger, min inclusive: 1, max inclusive: 9, (XPath GARWorkInv/GWlbody/GWlitem/inventory/actualPackageUnit/@packageLevel) [Optional]</p>
packageModelCode	<p>a code (eg a barcode) identifying the type of packaging - base type: string, (XPath GARWorkInv/GWlbody/GWlitem/inventory/actualPackageUnit/packageModelCode) 0-1</p>
packageN	<p>serial number used to identify a transport package - base type: string, max length: 40, (XPath GARWorkInv/GWlbody/GWlitem/inventory/actualPackageUnit/packageIdentification/packageN) 1-1 (XPath GARWorkInv/GWlbody/GWlitem/inventory/actualPackageUnit/packagesList/packageIdentification/packageN) 1-1</p>
packageText	<p>denomination of the type of transport package (text) - base type: string, max length: 80, (XPath GARWorkInv/GWlbody/GWlitem/inventory/actualPackageUnit/packageText) 0-1</p>
person	<p>name of the contact person within a Party - base type: string, max length: 40, (XPath GARWorkInv/GWlheader/subContractor/person) 0-1</p>

	(XPath GARWorkInv/GWlheader/buyer/person) 0-1
@phone	phone number of the contact person within a Party - base type: string, max length: 35, (XPath GARWorkInv/GWlheader/buyer/person/@phone) [Optional] (XPath GARWorkInv/GWlheader/subContractor/person/@phone) [Optional]
postCode	code defining the postal zone - base type: string, max length: 10, (XPath GARWorkInv/GWlheader/subContractor/postCode) 0-1 (XPath GARWorkInv/GWlheader/buyer/postCode) 0-1
qty	net quantity of the article or object correlated, qualified by the function of the document (ordering, delivering, ..) and by the context - base type: decimal, min inclusive: 0, fraction digits: 2, (XPath GARWorkInv/GWlbody/GWlitem/inventory/qty) 1-2 <hr/> AAAA-WARNING! - text not AVAILABLE n. 245 - In=en
qualityLevel	the product quality level (first choice, second choice,...). - base type: string, (XPath GARWorkInv/GWlbody/GWlitem/inventory/itemsList/qualityLevel) 0-1 (XPath GARWorkInv/GWlbody/GWlitem/inventory/actualPackageUnit/itemsList/qualityLevel) 0-1
season	sale season; defined as: season (1 crt) + year (4 crt) - season: S/S=1 A/W=2 Spring=3 Summer=4 Autumn=5 Winter=6: for more than four seasons use alphabetic sequence: 1st season=A 2nd season=B etc.etc. - base type: string, max length: 15, (XPath GARWorkInv/GWlbody/GWlitem/refDoc/season) 0-1 - note: here indicates the season to which the referenced document belongs (XPath GARWorkInv/GWlheader/refDoc/season) 0-1 - note: here indicates the season to which the referenced document belongs
@sender	qualifier that specifies the Party issuing of the document - base type: boolean, (XPath GARWorkInv/GWlheader/buyer/@sender) [Optional] - nota: This attribute is mandatory when the STYLESHEET must be used (XPath GARWorkInv/GWlheader/subContractor/@sender) [Optional] - nota: This attribute is mandatory when the STYLESHEET must be used
serialN	serial number used for the identification of a physical unit - base type: string, max length: 250, (XPath GARWorkInv/GWlbody/GWlitem/inventory/actualPackageUnit/packageIdentification/serialN) 0-9 - note: multiple values of serialN are allowed in order to provide different representations of the serial identifier of the same package unit. Different instances of serialN must differ at least for one value of idQualifier or numberingOrg (XPath GARWorkInv/GWlbody/GWlitem/inventory/actualPackageUnit/packagesList/packageIdentification/serialN) 0-9 - note: multiple values of serialN are allowed in order to provide different representations of the serial identifier of the same package unit. Different instances of serialN must differ at least for one value of idQualifier or numberingOrg (XPath GARWorkInv/GWlbody/GWlitem/inventory/actualPackageUnit/itemsList/itemIdentification/serialN) 1-9 <hr/> AAAA-WARNING! - text not AVAILABLE n. 245 - In=en - note: multiple values of serialN are allowed for different representations of the serial identifier of the same product unit. Instances of serialN must differ at least for one value of numberingOrg and idQualifier. (XPath GARWorkInv/GWlbody/GWlitem/inventory/serialN) 0-unbounded - note: Use this element if the coding method is only one and is the same for each article

	<p>(XPath GARWorkInv/GWlbody/GWlitem/inventory/itemsList/itemIdentification/serialN) 1-9</p> <hr/> <p>AAAA-WARNING! - text not AVAILABLE n. 245 - In=en - note: multiple values of serialN are allowed for different representations of the serial identifier of the same product unit. Instances of serialN must differ at least for one value of numberingOrg and idQualifier.</p>
size	<p>size number of a fashion product (knitwear, clothing, ..) - base type: string, max length: 15, (XPath GARWorkInv/GWlbody/GWlitem/garmentCode/garmentCodeB/size) 0-1 (XPath GARWorkInv/GWlbody/GWlitem/garmentPartCode/size) 0-1</p>
street	<p>street and building number identifying a location - base type: string, max length: 80, (XPath GARWorkInv/GWlheader/subContractor/street) 0-1 (XPath GARWorkInv/GWlheader/buyer/street) 0-1</p>
subCountry	<p>short name or code of the sub-country entity - base type: string, max length: 9, (XPath GARWorkInv/GWlheader/buyer/subCountry) 0-1 (XPath GARWorkInv/GWlheader/subContractor/subCountry) 0-1</p>
subDept	<p>name or code of a contact department within a Party - base type: string, max length: 40, (XPath GARWorkInv/GWlheader/buyer/subDept) 0-1 (XPath GARWorkInv/GWlheader/subContractor/subDept) 0-1</p>
@TID	<p>serial number wired into the RFID chip - base type: string, (XPath GARWorkInv/GWlbody/GWlitem/inventory/EPClist/EPC/@TID) [Optional]</p>
@uid	<p>unique element identifier within the xml document - base type: string, (XPath GARWorkInv/GWlbody/GWlitem/refDoc/attachment/@uid) [Optional] (XPath GARWorkInv/GWlheader/refDoc/attachment/@uid) [Optional]</p>
@um	<p>specification of the unit of measure - base type: string, cod. table: NT7 http://www.ebiz.enea.it/moda-ml/repository/codelist/draft/gc_NT7.xml (XPath GARWorkInv/GWlbody/GWlitem/inventory/actualPackageUnit/grossWeight/@um) [Required] (XPath GARWorkInv/GWlbody/GWlitem/inventory/actualPackageUnit/packageDim/length/@um) [Required] (XPath GARWorkInv/GWlbody/GWlitem/inventory/actualPackageUnit/netWeight/@um) [Required] (XPath GARWorkInv/GWlbody/GWlitem/inventory/qty/@um) [Required] (XPath GARWorkInv/GWlbody/GWlitem/inventory/actualPackageUnit/volume/@um) [Required] (XPath GARWorkInv/GWlbody/GWlitem/inventory/actualPackageUnit/packageDim/width/@um) [Required] (XPath GARWorkInv/GWlbody/GWlitem/inventory/actualPackageUnit/packageDim/height/@um) [Required]</p>
uri	<p>Uniform Resource Identifier (URI) that identifies the external object as an Internet resource - base type: normalizedString, (XPath GARWorkInv/GWlbody/GWlitem/refDoc/attachment/externalReference/uri) 1-1 (XPath GARWorkInv/GWlheader/refDoc/attachment/externalReference/uri) 1-1</p>

@useProfile	<p>use profile to which the present document is compliant if it was agreed by the parties. It is suggested a URI with reference to the firm or the URL of the profile.</p> <p>- base type: string, (XPath GARWorkInv/@useProfile) [Optional]</p>
variantCode	<p>Code of variant used for fashion product.</p> <p>- base type: string, (XPath GARWorkInv/GWlbody/GWlitem/garmentCode/garmentCodeB/garmentVariant/variantCode) 1-1</p>
variantType	<p>Type of variant used for fashion product (examples: 'treatment', 'washing type', 'size class',...)</p> <p>- base type: string, (XPath GARWorkInv/GWlbody/GWlitem/garmentCode/garmentCodeB/garmentVariant/variantType) 1-1</p>
@VAT	<p>VAT rate or code (DEPRECATED, use dtScheme element)</p> <p>- base type: string, cod. table: NT16 http://www.ebiz.enea.it/moda-ml/repository/codelist/draft/gc_NT16.xml (XPath GARWorkInv/GWlbody/GWlitem/lineN/@VAT) [Optional]</p> <p>- nota: <i>Deprecated, prefer dtScheme when available.</i></p>
@version	<p>Dictionary version from which the instance has been created</p> <p>- base type: string, cod. table: NT100 http://www.ebiz.enea.it/moda-ml/repository/codelist/draft/gc_NT100.xml (XPath GARWorkInv/@version) [Optional] [Default= draft]</p>
volume	<p>effective volume of a specified object</p> <p>- base type: decimal, min inclusive: 0, fraction digits: 2, (XPath GARWorkInv/GWlbody/GWlitem/inventory/actualPackageUnit/volume) 0-1</p>
width	<p>effective width of a specified object</p> <p>- base type: decimal, min inclusive: 0, fraction digits: 2, (XPath GARWorkInv/GWlbody/GWlitem/inventory/actualPackageUnit/packageDim/width) 0-1</p>

2.3 Suggested best practices

GARWorkInv/GWlbody/GWlitem/inventory/qty (net quantity of the article or object correlated, qualified by the function of the document (ordering, delivering, ..) and by the context)

this element can have two instances only if the units of measure are different

GARWorkInv/GWlbody/GWlitem/inventory/actualPackageUnit/itemsList/itemIdentification/serialN (serial number used for the identification of a physical unit)

in the case of garment with RFID for anti-counterfeiting, RFID EPCGlobal for logistics and NFC for the customer experience there should be three serial elements with pairs of attributes numberingOrg/idQualifier: "CL"/"RFID", "GS1"/"RFID", "CL"/"NFC".

GARWorkInv/GWlbody/GWlitem/inventory/itemsList/

itemIdentification/serialN (serial number used for the identification of a physical unit)

in the case of garment with RFID for anti-counterfeiting, RFID EPCGlobal for logistics and NFC for the customer experience there should be three serial elements with pairs of attributes numberingOrg/idQualifier: "CL"/"RFID", "GS1"/"RFID", "CL"/"NFC".

2.4 Enumeration tables

List of enumeration tables used in the XML document. You can find the corresponding codes at:
<http://www.ebiz-tcf.eu/moda-ml/imple/moda-ml-draft.asp?lingua=en&pag=6>

NT100 - eBIZ TCFUpstream version
NT16 - VAT rate or code
NT18 - message function
NT29 - format of a date
NT3 - data format
NT6 - coding system owner/issuer
NT7 - unit of measure
T10 - ISO3166 - Country
T11 - transport package type
T21 - type of document
T44 - additional code type
T47 - stock type
T48 - garment part type

ACKNOWLEDGEMENT



This action is part of the eBIZ-4.0 project, which has received funding from the European Union's COSME Programme (2014 - 2020).

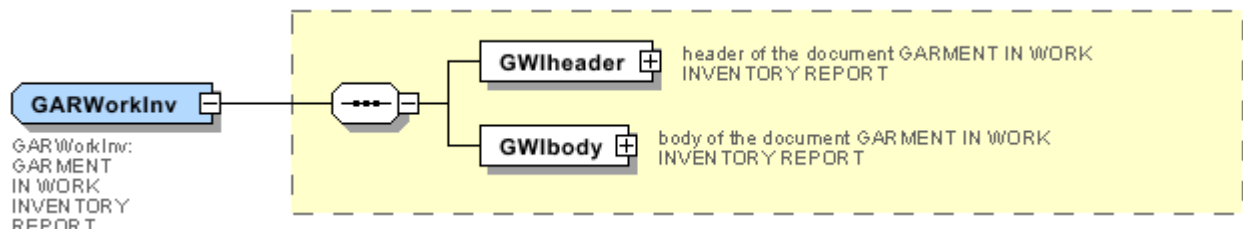
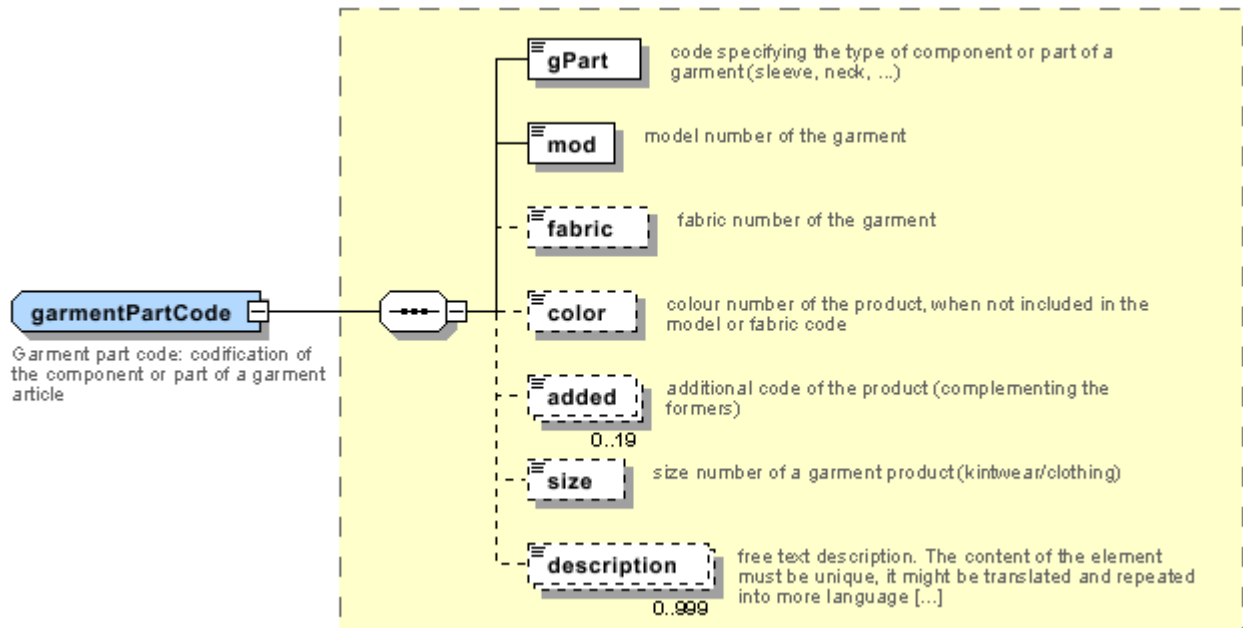
DISCLAIMER

The content of this document represents the views of the authors only and is their sole responsibility; it cannot be considered to reflect the views of the European Commission and/or the Executive Agency for Small and Medium-sized Enterprises (EASME) or any other body of the European Union.

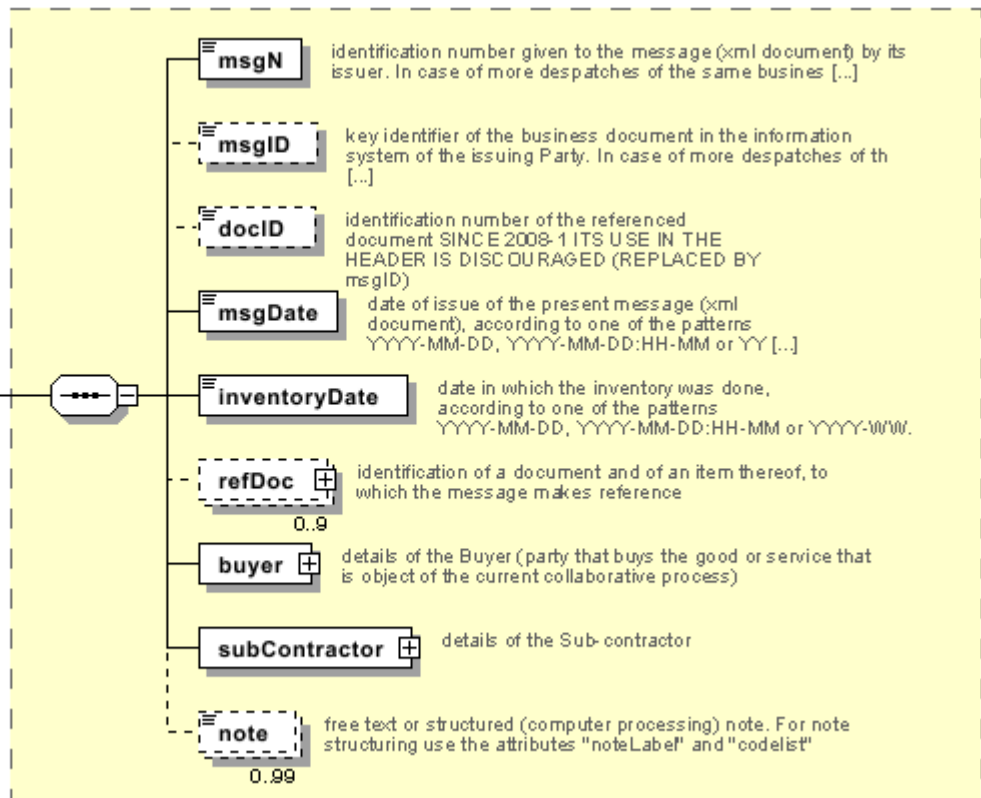
The European Commission and the Agency do not accept any responsibility for use that may be made of the information it contains.

Annex A

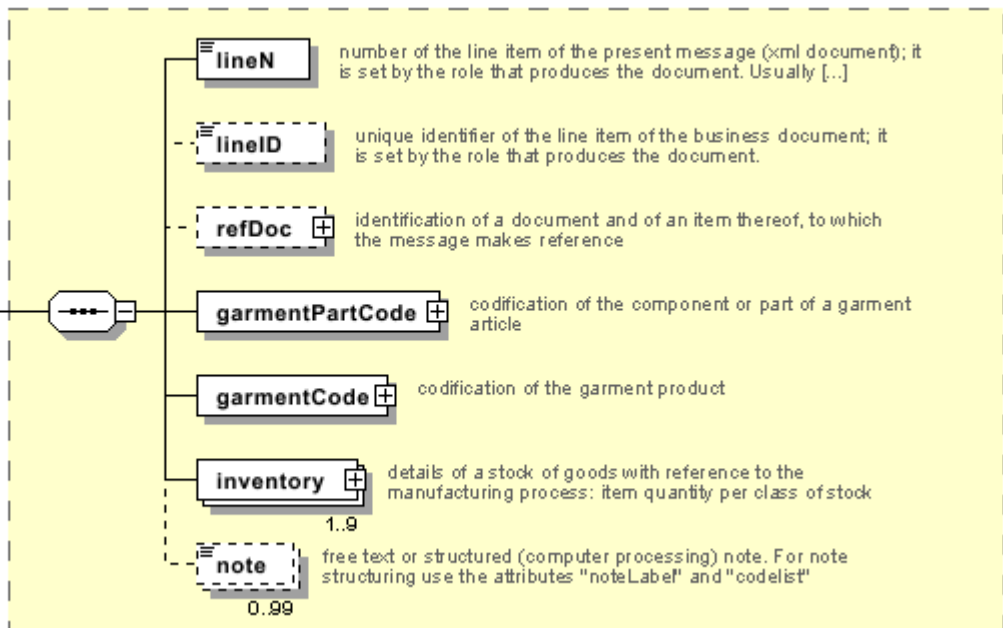
Representative images of the principal complex elements' structure.

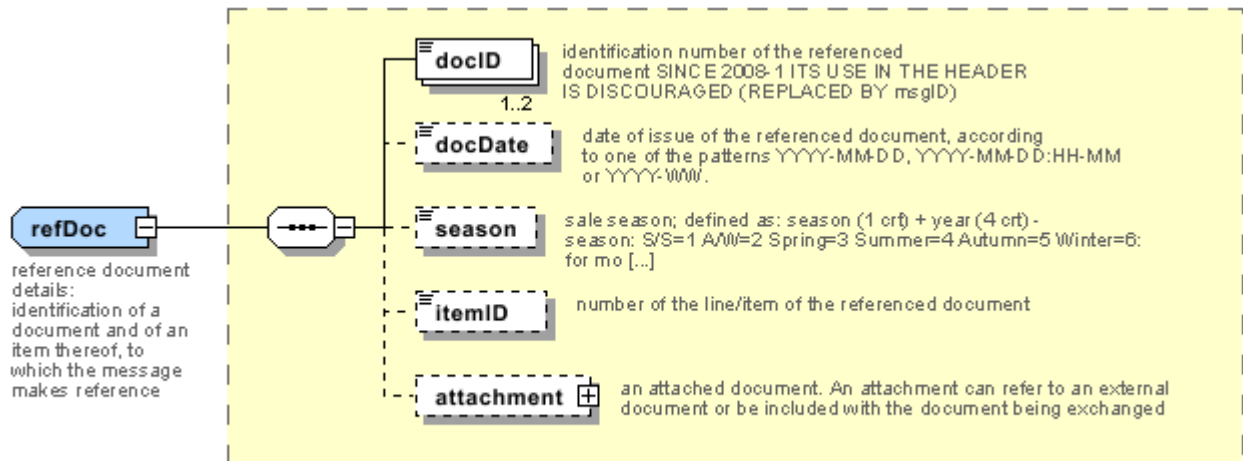


GWlheader
 GWl header:
 header of the
 document
 GARMENT IN
 WORK INVENTORY
 REPORT



GWlitem
 GWl item:
 line item of
 the document
 GARMENT IN
 WORK
 INVENTORY
 REPORT





Annex B

NT100 - eBIZ TCFUpstream version

dictionary version

Agency name: eBIZ

tabella cod.: NT100

File codes list (Generic code): http://www.ebiz.enea.it/moda-ml/repository/codelist/draft/gc_NT100.xml

Code	Description	Adoption note	Date of insertion
2013-1	v2013-1		01/07/2013
2018-1	v2018-1		04/11/2018
draft	draft		08/09/2017

NT16 - VAT rate or code

VAT rate or code (DEPRECATED, use dtScheme element)

tabella cod.: NT16

File codes list (Generic code): http://www.ebiz.enea.it/moda-ml/repository/codelist/draft/gc_NT16.xml

NT18 - message function

function performed by the present message with regards to the transmission

Agency name: eBIZ

tabella cod.: NT18

File codes list (Generic code): http://www.ebiz.enea.it/moda-ml/repository/codelist/draft/gc_NT18.xml

Code	Description	Adoption note	Date of insertion
CA	delete this document		01/07/2013
CP	copy		
OR	original		
RC	re-transmission for data correction		
RT	re-transmission		

NT29 - format of a date

format used for the date

Agency name: eBIZ

tabella cod.: NT29

File codes list (Generic code): http://www.ebiz.enea.it/moda-ml/repository/codelist/draft/gc_NT29.xml

Code	Description	Adoption note	Date of insertion
D	YYYY-MM-DD		
M	YYYY-MM-DD:HH-MM		
W	YYYY-WW		

NT3 - data format

format of a string according to a customized User rule (local rule)

Agency name: eBIZ

tabella cod.: NT3

File codes list (Generic code): http://www.ebiz.enea.it/moda-ml/repository/codelist/draft/gc_NT3.xml

Code	Description	Adoption note	Date of insertion
EN4	GS1-GLN		01/07/2013
MD	mutually agreed		

NT6 - coding system owner/issuer

code specifying the organisation who has created or owns the coding or numbering system

Agency name: eBIZ

tabella cod.: NT6

File codes list (Generic code): http://www.ebiz.enea.it/moda-ml/repository/codelist/draft/gc_NT6.xml

Code	Description	Adoption note	Date of insertion
CL	Customer/buyer		
CO	Quality Controller		
EN	GS1 (ex-EAN International)		
ES	e-Stockflow		
FO	Supplier		
GS	GS1		01/07/2013
MF	VAT identifier		
ML	Moda-ML		

SP	Service Provider		
----	------------------	--	--

NT7 - unit of measure

specification of the unit of measure, it is a sub set of table Unit of Measure Code - UN/ECE REC 20 delivered by United Nations Economic Commission for Europe (UN/ECE)

Agency name: eBIZ / UN/ECE

tabella cod.: NT7

File codes list (Generic code): http://www.ebiz.enea.it/moda-ml/repository/codelist/draft/gc_NT7.xml

Other link: <http://docs.oasis-open.org/ubl/os-UBL-2.1/cl/gc/default/UnitOfMeasureCode-2.1.gc#>

Code	Description	Adoption note	Date of insertion
CMK	square centimetre		20/12/2017
CMQ	cubic centimetre		20/12/2017
CMT	centimetre		
CNE	centiNewton		
CO2TON	ton of CO2		10/09/2014
COUPLES	couples		
DMQ	cubic decimetre		
E37	pixel		11/04/2018
GRM	gram		
HUR	hour		
INH	inch		
KGM	kilogram		
KMT	kilometer		
KWH	kilowatthours		10/09/2014
LBR	pound		
MIN	minute		
MMK	centimetre		20/12/2017
MMK	square millimetre		20/12/2017
MTK	square metre		20/12/2017
MTQ	cubic metre		
MTR	metre		
NMB	numero		
ONZ	ounce		
P1	percent		

PPM	parts per milion		
PZ	piece		
RPM	rounds per metre		
YRD	yard		

T10 - ISO3166 - Country

code of the nation

Agency name: ISO

tabella cod.: T10

File codes list (Generic code): http://www.ebiz.enea.it/moda-ml/repository/codelist/draft/gc_T10.xml

Table not printed: there are 239 elements, more than the maximum specified for printing: 99.

T11 - transport package type

code specifying the type of package used for transport and delivery (subset of UN/ECE 8053 and UBL TransportEquipmentTypeCode-2.1)

Agency name: eBIZ

tabella cod.: T11

File codes list (Generic code): http://www.ebiz.enea.it/moda-ml/repository/codelist/draft/gc_T11.xml

Other link: <http://docs.oasis-open.org/ubl/os-UBL-2.1/cl/gc/default/TransportEquipmentTypeCode-2.1.gc#>

Code	Description	Adoption note	Date of insertion
4A	box, steel		
4C	box, wood		
4G	Box, fibreboard		01/08/2018
4H	Box, plastic		01/08/2018
5H	Bag, woven plastic		01/08/2018
5L	Bag, textile		01/08/2018
5M	Bag, paper		
AJ	Cone		01/08/2018
BL	Bale, compressed		01/08/2018
BN	Bale, non-compressed		01/08/2018
BX	Box		
CI	Canister		01/08/2018
CL	Coil		01/08/2018

CN	Container, not otherwise specified as transport equipment		01/08/2018
CS	Case		01/08/2018
CT	Carton		01/08/2018
EC	Bag, plastic		01/08/2018
ED	Case, with pallet base		01/08/2018
EE	Case, with pallet base, wooden		01/08/2018
EF	Case, with pallet base, cardboard		01/08/2018
EG	Case, with pallet base, plastic		01/08/2018
EH	Case, with pallet base, metal		01/08/2018
FX	Bag, flexible container		01/08/2018
HN	Hanger		01/08/2018
NE	unpacked		
NF	Unpacked or unpackaged, single unit		01/08/2018
NG	Unpacked or unpackaged, multiple units		01/08/2018
OA	Pallet, CHEP 40 cm x 60 cm		01/08/2018
OB	Pallet, CHEP 80 cm x 120 cm		01/08/2018
OC	Pallet, CHEP 100 cm x 120 cm		01/08/2018
OD	Pallet, AS 4068-1993		01/08/2018
OE	Pallet, ISO T11		01/08/2018
PE	europallet (80x120)		
PX	pallet		
QS	box, plastic, solid		
RJ	Rack, clothing hanger		01/08/2018
RL	Reel		01/08/2018
SO	Spool		01/08/2018
TU	tube		
XD	bag, plastics film		
XK	bag,paper, multi-wall, water resistant		
ZZ	Mutually defined		01/08/2018

T21 - type of document

type or class to which the referenced document belongs

Agency name: eBIZ

tabella cod.: T21

File codes list (Generic code): http://www.ebiz.enea.it/moda-ml/repository/codelist/draft/gc_T21.xml

Code	Description	Adoption note	Date of insertion
BOR	blanket order		01/02/2018
CAT	Price catalogue - tech sheet		
CEO	Certificate of origin		13/04/2018
CER	Certificate		13/04/2018
COC	colour card		
CRN	Credit note		08/09/2017
CTO	Checking order		01/07/2013
CTR	Contract		
CXF	CxF3 file		01/07/2013
DAD	Darn order		
DDT	ddt		
DEA	Despatch advise		
DER	Despatch request		
DR	Document Request		02/12/2014
FOR	Forecast		02/12/2014
GSO	Garment stock offer		
GSX	Garment stock offer change		
INV	Invoice		
KCC	Knitting-Clothing Commission Order		02/12/2014
KCI	Garment in Work Inventory Report		02/12/2014
M2M	Made to Measure Production Order		02/12/2014
MAS	Master marker		
MCI	Visual merchandising instruction		13/04/2018
OCH	Order change		
OFF	Offer		
ORD	Purchase order		
ORP	Order response		
OSR	order status request		
OSS	Offer status		02/12/2014
OST	Order status		
OUR	our reference		
QR	Quality Report		02/12/2014

RAI	Raw Material in Work Inventory Report		02/12/2014
RDC	Raw dyeing commission order		
RDH	Raw dyeing order change		
RDR	Raw dyeing order response		
REA	Receiving advise		
REQ	Request for Offer		
RET	Return		02/12/2014
RSC	Spinning commission order		
RSH	Spinning order change		
RSR	Spinning order response		
SCL	process sheet		
TFC	Textile dyeing-finishing commission order		
TFX	Textile Dyeing-Finishing Order Change		02/12/2014
TPC	Textile printing commission order		
TPX	Textile Printing Order Change		02/12/2014
TWI	Textile in work inventory		
VMI	visual merchandising instructions		01/02/2018
WAC	Warping commission order		
WEC	Weaving commission order		
YDC	Yarn dyeing commission order		
YDH	Yarn dyeing order change		
YDR	Yarn dyeing order response		
YTC	Twisting commission order		
YWI	Yarn in work inventory		

T44 - additional code type

qualifier of the additional coding of a product

Agency name: eBIZ

tabella cod.: T44

File codes list (Generic code): http://www.ebiz.enea.it/moda-ml/repository/codelist/draft/gc_T44.xml

Code	Description	Adoption note	Date of insertion
CC	colour card		
CL	sales collection		
CO	company identification code		08/09/2017

DY	dye number		
LT	lot number		
MDI	Made in		08/09/2017
MS	manufacturing state		
PKG	packaging		09/09/2014
PL	product line		
RGB	RGB value		
SE	selvedge code		

T47 - stock type

code classifying a stock of goods with reference to the manufacturing status

Agency name: eBIZ

tabella cod.: T47

File codes list (Generic code): http://www.ebiz.enea.it/moda-ml/repository/codelist/draft/gc_T47.xml

Code	Description	Adoption note	Date of insertion
ALL	overall stock		
DMG	damaged stock		
FIW	finished (post-works) stock		
PRW	pre-works stock		
WIP	work in progress stock		

T48 - garment part type

code specifying the type of component or part of a garment (sleeve, neck, ...)

Agency name: eBIZ

tabella cod.: T48

File codes list (Generic code): http://www.ebiz.enea.it/moda-ml/repository/codelist/draft/gc_T48.xml

Code	Description	Adoption note	Date of insertion
BB	bottom back		01/08/2018
BF	bottom fore/front		01/08/2018
CO	collar		01/08/2018
CU	cuff		01/08/2018
DV	fore		

EM	embroidery		01/08/2018
OC	other component		01/08/2018
PO	pocket		01/08/2018
SC	back		
SL	sleeve		01/08/2018
TB	top back		01/08/2018
TF	top fore/front		01/08/2018