



<http://www.ebiz-tcf.eu>

## IMPLEMENTATION GUIDE

includes COMPARISON BETWEEN CURRENT and LAST  
PREVIOUSLY RELEASED VERSION

TRANSACTION "ACCESSORY PURCHASE ORDER CHANGE"

Version: v2018-1

Date of release: 18/7/2019

Document code: G036rv

technical Documentation: <http://www.ebiz.enea.it>

XML Schemas repository: <http://www.ebiz.enea.it/moda-ml/repository/schema/v2018-1/default.asp>

Guides repository: <http://www.ebiz.enea.it/moda-ml/repository/guide/v2018-1/default.asp>

Guide filename: G036rv-eBIZ-AccessoryPurchaseOrderChange.pdf

# 1. BUSINESS DESCRIPTION

## 1.1 Scope

The present guide has been issued to assist the companies of the Textile-Clothing sector in the implementation of the standard XML document type "GARMENT ACCESSORY PURCHASE ORDER CHANGE", providing all the instruction required for its use in any context of e-commerce between Apparel or Fabric Producers and Garment Accessory Producers (Suppliers).

All the rules required for the construction and validation of the document are embedded into the specific XML-Schema, which is detailed in section "Implementation guide".

## 1.2 Generalities

The Apparel or the Fabric Producer sends an Order Change any time he must modify some conditions of his previous Order (eg. to cancel items not delivered in time) or amend errors (eg. invalid prices). Basic function of the message is to replace an invalid Order with a valid Order, amending:

- suppliable quantities
- dates and places of delivery
- prices

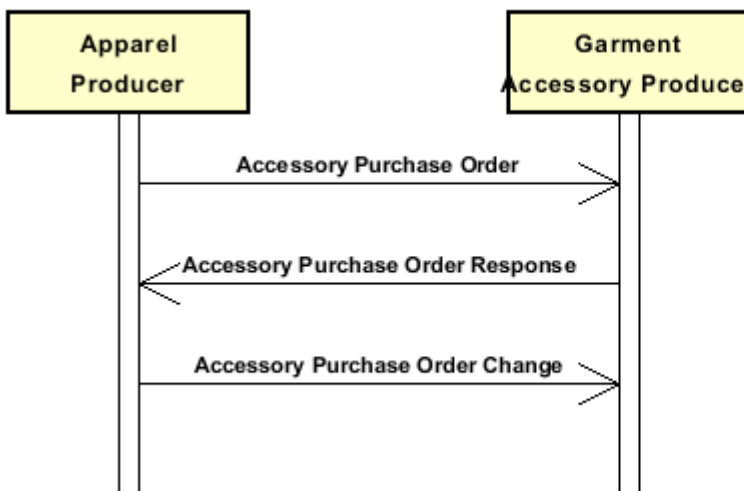
The Order Change can show a number of lines different from the related Purchase Order, when variations/cancellations have occurred so as to create the splitting of an Order Line.

However the sum of the quantities of the lines in the Order Change (confirmed + varied + cancelled) must always not less than the sum of the quantities in the original Order.

When the quantity is change the original line must be splitted and the confirmed amount and canceled amount should be explicated through the 'act' flag.

## 1.3. Possible scenario

Purchase of garment accessories



## 2. IMPLEMENTATION GUIDE

### 2.1 General structure of XML document

All the business data that can be exchanged through this class of documents are shown in the following "document structure", that provides a simplified vision of the Schema.

In particular:

- the two numbers following each element define its "cardinality" (minimum and maximum number of occurrences); the minimum equal zero indicates that the element is optional, the minimum greater than zero indicates that is mandatory;
- the bold character denotes the complex elements (aggregates of simple elements) that were built for the sake of functionality and re-usability of some complex informations sets. The child elements in each parent element are easily spotted as "indented";
- the symbol "@" denotes an attribute of the preceding element; here "the usage indicator (optional, required, ...)" is shown in square brackets.

#### Legenda

- N: new element
- U: updated properties
- P: changes in children
- p: is a changed child
- A: changes in attributes
- a: is a new or changed attribute
- \*: is a subtype

### Structure

#### ACSOrdChange

@Totype [Optional]

@msgfunction [Optional] [Default= OR]

@version [Optional] [Default= 2018-1]

@useProfile [Optional]

```
| TXheader 1-1 (P)
| | msgN 1-1
| | - choose -
| | msgID 0-1
| | - or -
| | docID 0-1
| | @numberingOrg [Optional]
| | - end choose -
| | msgDate 1-1
| | @dateForm [Optional]
| | validityEnd 0-1
| | @dateForm [Optional]
| | msgCurrency 0-1
| | otherCurrency 0-9 (A)
| | @currencyUseQualifier [Required]
| | @exchangeRate [Optional] (N)
| | refDoc 1-9 (P)
| | @docType [Required]
| | | docID 1-2 (p)
| | | @numberingOrg [Optional]
| | | docDate 0-1
| | | @dateForm [Optional]
| | | season 0-1 (A)
| | | @numberingOrg [Optional] (a)
| | | @codeList [Optional] (a)
```

| @listName [Optional] (a)  
 | @listVersion [Optional] (a)  
 | itemID 0-1 (U)  
 | **attachment 0-1** (N)  
 | @uid [Optional]  
 | | fileName 0-1 (N)  
 | | @numberingOrg [Optional] (a)  
 | | binaryObject 0-1 (N)  
 | | @format [Optional] (N)  
 | | @mime [Optional] (N)  
 | | @encoding [Optional] (N)  
 | | @characterSet [Optional] (N)  
 | | **externalReference 0-99** (N)  
 | | | uri 1-1 (N)  
 | | | @isURL [Optional] [Default= true] (Na)  
 | | | mimeTypeCode 0-1 (N)  
 | | | formatCode 0-1 (N)  
 | | | encodingCode 0-1 (N)  
 | | | characterSetCode 0-1 (N)

**buyer 1-1** (AP)

| @logo [Optional]  
 | @sender [Optional] (a\*)  
 | | id 1-1 (p)  
 | | @numberingOrg [Optional]  
 | | additionalIdentifier 0-9 (N)  
 | | @numberingOrg [Optional] (a)  
 | | @idQualifier [Optional] (Na)  
 | | legalName 0-1 (U)  
 | | dept 0-1  
 | | subDept 0-1 (N)  
 | | person 0-1  
 | | @email [Optional]  
 | | @phone [Optional]  
 | | @fax [Optional]  
 | | street 0-1  
 | | city 0-1  
 | | subCountry 0-1  
 | | country 0-1  
 | | postCode 0-1

**supplier 1-1** (AP)

| @logo [Optional]  
 | @sender [Optional] (a\*)  
 | | id 1-1  
 | | @numberingOrg [Optional]  
 | | additionalIdentifier 0-9 (N)  
 | | @numberingOrg [Optional] (a)  
 | | @idQualifier [Optional] (Na)  
 | | legalName 0-1 (U)  
 | | dept 0-1  
 | | subDept 0-1 (N)  
 | | person 0-1  
 | | @email [Optional]  
 | | @phone [Optional]  
 | | @fax [Optional]  
 | | street 0-1  
 | | city 0-1  
 | | subCountry 0-1  
 | | country 0-1  
 | | postCode 0-1

**thirdParty 0-5** (AP)

| @VAT [Optional]

```

| | @role [Required]
| | @sender [Optional] (a*)
| | | id 1-1
| | | @numberingOrg [Optional]
| | | legalName 0-1 (U)
| | | dept 0-1
| | | subDept 0-1 (N)
| | | person 0-1
| | | @email [Optional]
| | | @phone [Optional]
| | | @fax [Optional]
| | | street 0-1
| | | city 0-1
| | | subCountry 0-1
| | | country 0-1
| | | postCode 0-1
| | note 0-99
| | @numberingOrg [Optional]
| | @codeList [Optional]
| | @noteLabel [Optional]
|
| terms 0-1 (P)
| | payment 0-5
| | | @finDiscount [Optional]
| | | @finSurcharge [Optional]
| | | - choose -
| | | | payTerm 1-1
| | | | - or -
| | | | payTermText 1-1 (U)
| | | | - end choose -
| | | | payMode 0-1
| | | insPayment 0-5
| | | | @part [Required]
| | | | - choose -
| | | | | payTerm 1-1
| | | | | - or -
| | | | | payTermText 1-1 (U)
| | | | | - end choose -
| | | | | payMode 0-1
| | | trade 0-1
| | | | - choose -
| | | | | incoTermText 1-1 (U)
| | | | | - or -
| | | | | incoTerm 1-1
| | | | | - end choose -
| | | | | location 0-1
| | | | | @LRI [Optional]
| | | transInfo 0-5 (pAP)
| | | | @transReason [Optional]
| | | | @progr [Optional] (N)
| | | | | transMode 1-1
| | | | | carrier 0-1
| | | | | deliveryPlace 0-1 (U)
| | | | | grossWeight 0-1
| | | | | @um [Required]
| | | | | netWeight 0-1
| | | | | @um [Required]
| | | | | transMeans 0-1
| | | | | transCondition 0-3
| | | | | transConditionText 0-1 (U)
| | | | | despatchPlace 0-1 (N)

```

| | | despatchDate 0-1 (N)  
 | | | @dateForm [Optional] (a)  
 | | | delEffectiveDate 0-1 (p)  
 | | | @dateForm [Optional]  
 | | **allowanceCharge 0-9 (A)**  
 | | | @um [Optional] (a)  
 | | | @VAT [Optional]  
 | | | @minQty [Optional] (a)  
 | | | @currency [Optional] (a)  
 | | | @maxQty [Optional] (N)  
 | | | @isCharge [Optional] (N)  
 | | | - choose -  
 | | | | AC\_category 1-1  
 | | | - or -  
 | | | | AC\_categoryText 1-1 (U)  
 | | | - end choose -  
 | | | - choose -  
 | | | | AC\_percent 1-1  
 | | | - or -  
 | | | | AC\_amount 1-1 (A)  
 | | | | @currency [Optional] (a)  
 | | | - end choose -  
 | | | **dtScheme 0-1 (P)**  
 | | | | @taxType [Required]  
 | | | | taxCategory 0-1  
 | | | | taxRate 0-1  
 | | | | legalRef 0-1 (A)  
 | | | | @numberingOrg [Optional]  
 | | | | @codeList [Optional]  
 | | | | @listName [Optional]  
 | | | | @listVersion [Optional]  
 | | | | note 0-99  
 | | | | @numberingOrg [Optional]  
 | | | | @codeList [Optional]  
 | | | | @noteLabel [Optional]

| | **acsComInfo 0-1 (AU)**  
 | | | @endUse [Optional] [Default= PR] (a)  
 | | | season 0-1 (A)  
 | | | | @numberingOrg [Optional] (a)  
 | | | | @codeList [Optional] (a)  
 | | | | @listName [Optional] (a)  
 | | | | @listVersion [Optional] (a)  
 | | | brand 0-1 (N)  
 | | | | @numberingOrg [Optional] (a)  
 | | | | @codeList [Optional] (a)  
 | | | | @listName [Optional] (a)  
 | | | | @listVersion [Optional] (a)  
 | | | productLine 0-1 (N)  
 | | | | @numberingOrg [Optional] (a)  
 | | | | @codeList [Optional] (a)  
 | | | | @listName [Optional] (a)  
 | | | | @listVersion [Optional] (a)  
 | | | collection 0-1  
 | | | project 0-1 (U)  
 | | | operationalCode 0-19 (N)  
 | | | | @numberingOrg [Optional] (a)  
 | | | | @codeList [Optional] (a)  
 | | | | @listName [Optional] (a)  
 | | | | @listVersion [Optional] (a)  
 | | | | @codeQualifier [Optional] (Na)

| deliveryDate 0-1  
 | | @dateForm [Optional]  
 | specDate 0-1  
 | | @dateForm [Optional]  
 | | **acsPack 0-1** (U)  
 | | - choose -  
 | | | acsPackCode 1-1 (AU)  
 | | | | @numberingOrg [Optional] (a)  
 | | | | @codeList [Optional] (a)  
 | | | | @listName [Optional] (a)  
 | | | | @listVersion [Optional] (a)  
 | | | - or -  
 | | | acsPackText 1-1 (U)  
 | | | - end choose -  
 | | note 0-99  
 | | | @numberingOrg [Optional]  
 | | | @codeList [Optional]  
 | | | @noteLabel [Optional]

| **AXbody 1-1**

| | **AXitem 1-unbounded** (P)  
 | | @act [Required]  
 | | | lineN 1-1  
 | | | | @VAT [Optional]  
 | | | | lineID 0-1 (N)  
 | | | | **refDoc 1-9** (P)  
 | | | | @docType [Required]  
 | | | | | docID 1-2 (p)  
 | | | | | | @numberingOrg [Optional]  
 | | | | | docDate 0-1  
 | | | | | | @dateForm [Optional]  
 | | | | | season 0-1 (A)  
 | | | | | | @numberingOrg [Optional] (a)  
 | | | | | | @codeList [Optional] (a)  
 | | | | | | @listName [Optional] (a)  
 | | | | | | @listVersion [Optional] (a)  
 | | | | | itemID 0-1 (U)  
 | | | | | **attachment 0-1** (N)  
 | | | | | | @uid [Optional]  
 | | | | | | | fileName 0-1 (N)  
 | | | | | | | | @numberingOrg [Optional]  
 | | | | | | | binaryObject 0-1 (N)  
 | | | | | | | | @format [Optional] (N)  
 | | | | | | | | @mime [Optional] (N)  
 | | | | | | | | @encoding [Optional] (N)  
 | | | | | | | | @characterSet [Optional] (N)  
 | | | | | | | **externalReference 0-99** (N)  
 | | | | | | | | uri 1-1 (N)  
 | | | | | | | | | @isURL [Optional] [Default= true] (Na)  
 | | | | | | | | | mimeTypeCode 0-1 (N)  
 | | | | | | | | | formatCode 0-1 (N)  
 | | | | | | | | | encodingCode 0-1 (N)  
 | | | | | | | | | characterSetCode 0-1 (N)  
 | | | | | | **acsCode 0-2** (U)  
 | | | | | | | @numberingOrg [Optional]  
 | | | | | | | | art 1-1 (U)  
 | | | | | | | | | @numberingOrg [Optional]  
 | | | | | | | | | @codeList [Optional]  
 | | | | | | | | | @listName [Optional]  
 | | | | | | | | | @listVersion [Optional]  
 | | | | | | pattern 0-1

```

| | | @numberingOrg [Optional]
| | | @codeList [Optional]
| | | @listName [Optional]
| | | @listVersion [Optional]
| | | color 0-1
| | | @numberingOrg [Optional]
| | | @codeList [Optional]
| | | @listName [Optional]
| | | @listVersion [Optional]
| | | added 0-9
| | | @numberingOrg [Optional]
| | | @addType [Optional]
| | | description 0-unbounded (AU)
| | | @ln [Optional] (N)
| | | qty 0-2
| | | @um [Required]
| | | csRange 0-99 (P)
| | | @numberingOrg [Optional]
| | | @sizeSystemNat [Optional]
| | | @sizeSystemSeg [Optional]
| | | @sizeSystemBase [Optional]
| | | @sizeSystemID [Optional]
| | | color 0-1
| | | @numberingOrg [Optional]
| | | @codeList [Optional]
| | | @listName [Optional]
| | | @listVersion [Optional]
| | | garmentVariant 0-9 (N)
| | | | variantType 1-1 (N)
| | | | @numberingOrg [Optional]
| | | | @codeList [Optional]
| | | | @listName [Optional]
| | | | @listVersion [Optional]
| | | | variantCode 1-1 (N)
| | | | @numberingOrg [Optional]
| | | | @codeList [Optional]
| | | | @listName [Optional]
| | | | @listVersion [Optional]
| | | drop 0-1 (Ap)
| | | @numberingOrg [Optional] (a)
| | | @codeList [Optional]
| | | @listName [Optional] (a)
| | | @listVersion [Optional] (a)
| | | sizeMatrix 1-1
| | | | sizeRow 1-99 (P)
| | | | | additionalComponentCode 0-9 (N)
| | | | | @numberingOrg [Optional] (a)
| | | | | @codeList [Optional] (a)
| | | | | @listName [Optional] (a)
| | | | | @listVersion [Optional] (a)
| | | | | drop 0-1 (A)
| | | | | @numberingOrg [Optional] (a)
| | | | | @codeList [Optional]
| | | | | @listName [Optional] (a)
| | | | | @listVersion [Optional] (a)
| | | | | size 1-1 (A)
| | | | | @numberingOrg [Optional] (a)
| | | | | @codeList [Optional]
| | | | | @listName [Optional] (a)
| | | | | @listVersion [Optional] (a)
| | | | qty 0-1

```



| | | | | @um [Required]  
 | | | | | **itemsList 0-1** (N)  
 | | | | | | qualityLevel 0-1 (N)  
 | | | | | | @numberingOrg [Optional] (a)  
 | | | | | | @codeList [Optional] (a)  
 | | | | | | @listName [Optional] (a)  
 | | | | | | @listVersion [Optional] (a)  
 | | | | | | **itemIdentification 1-unbounded** (N)  
 | | | | | | | serialN 1-9 (AU)  
 | | | | | | | @numberingOrg [Optional]  
 | | | | | | | @idQualifier [Optional] (N)  
 price 0-1 (AU)  
 @um [Optional]  
 @priceQualifier [Optional] [Default= NET]  
 @currency [Optional] (a)  
 comDiscount 0-1  
**thirdParty 0-3** (AP)  
 @VAT [Optional]  
 @role [Required]  
 @sender [Optional] (a\*)  
 | id 1-1  
 | | @numberingOrg [Optional]  
 | legalName 0-1 (U)  
 | dept 0-1  
 | subDept 0-1 (N)  
 | person 0-1  
 | | @email [Optional]  
 | | @phone [Optional]  
 | | @fax [Optional]  
 | street 0-1  
 | city 0-1  
 | subCountry 0-1  
 | country 0-1  
 | postCode 0-1  
**acsComInfo 0-1** (AU)  
 @endUse [Optional] [Default= PR] (a)  
 | season 0-1 (A)  
 | | @numberingOrg [Optional] (a)  
 | | @codeList [Optional] (a)  
 | | @listName [Optional] (a)  
 | | @listVersion [Optional] (a)  
 | brand 0-1 (N)  
 | | @numberingOrg [Optional] (a)  
 | | @codeList [Optional] (a)  
 | | @listName [Optional] (a)  
 | | @listVersion [Optional] (a)  
 | productLine 0-1 (N)  
 | | @numberingOrg [Optional] (a)  
 | | @codeList [Optional] (a)  
 | | @listName [Optional] (a)  
 | | @listVersion [Optional] (a)  
 | collection 0-1  
 | project 0-1 (U)  
 | operationalCode 0-19 (N)  
 | | @numberingOrg [Optional] (a)  
 | | @codeList [Optional] (a)  
 | | @listName [Optional] (a)  
 | | @listVersion [Optional] (a)  
 | | @codeQualifier [Optional] (Na)  
 | deliveryDate 0-1  
 | @dateForm [Optional]

```

| | | | specDate 0-1
| | | |   @dateForm [Optional]
| | | | | acsPack 0-1 (U)
| | | | - choose -
| | | | |   acsPackCode 1-1 (AU)
| | | | |   @numberingOrg [Optional]
| | | | |   @codeList [Optional]
| | | | |   @listName [Optional]
| | | | |   @listVersion [Optional]
| | | | - or -
| | | | |   acsPackText 1-1 (U)
| | | | - end choose -
| | | | | note 0-99
| | | | |   @numberingOrg [Optional]
| | | | |   @codeList [Optional]
| | | | |   @noteLabel [Optional]
| | | | | finInfo 0-1 (P)
| | | | | | accountName 0-1 (N)
| | | | | | bank 0-1 (N*)
| | | | | | | legalName 0-1 (U)
| | | | | | | dept 0-1
| | | | | | | subDept 0-1 (N)
| | | | | | | person 0-1
| | | | | | |   @email [Optional]
| | | | | | |   @phone [Optional]
| | | | | | |   @fax [Optional]
| | | | | | | street 0-1
| | | | | | | city 0-1
| | | | | | | subCountry 0-1
| | | | | | | country 0-1
| | | | | | | postCode 0-1
| | | | - choose -
| | | | | iban 1-1
| | | | - or -
| | | | | bankIT 1-1
| | | | | | legalName 0-1 (U)
| | | | | | cin 0-1
| | | | | | abi 1-1
| | | | | | cab 1-1
| | | | | | accountN 1-1
| | | | - end choose -
| | | | | swift 0-1
| | | | | note 0-99
| | | | |   @numberingOrg [Optional]
| | | | |   @codeList [Optional]
| | | | |   @noteLabel [Optional]
| | | | | note 0-99
| | | | |   @numberingOrg [Optional]
| | | | |   @codeList [Optional]
| | | | |   @noteLabel [Optional]
| | | | | | dtScheme 0-1 (P)
| | | | | | @taxType [Required]
| | | | | | | taxCategory 0-1
| | | | | | | taxRate 0-1
| | | | | | | legalRef 0-1 (A)
| | | | | | |   @numberingOrg [Optional] (a)
| | | | | | |   @codeList [Optional] (a)
| | | | | | |   @listName [Optional] (a)
| | | | | | |   @listVersion [Optional] (a)
| | | | | | | note 0-99
| | | | | | |   @numberingOrg [Optional]

```

| | | | @codeList [Optional]  
| | | | @noteLabel [Optional]

| **totals 0-1**

| | totQty 0-1  
| | @um [Required]  
| | goodsAmount 1-1 (A)  
| | @currency [Optional] (a)

## 2.2 Detailed description of document elements

Following tables show all elements (complex and simple) used in this document. Description includes: 1) element's information: xml tag, name, brief description, data type and syntax constraints; 2) information about use of the element in a particular position in the document: xpath and possible associated notes.

### 2.2.1 Complex elements (Aggregate Business Information Entities)

Complex elements are those elements whose content is composed of other elements (childs).Complex elements are alphabetically ordered.

<b>acsCode</b>	full codification identifying an accessory product usually coupled with garment or other fashion product (XPath ACSOrdChange/AXbody/AXitem/acsCode) 0-2 (U)
<b>acsComInfo</b>	miscellaneous trade information, that can be specified in a garment accessories Order, referred either to the whole document or to the single item (XPath ACSOrdChange/acsComInfo) 0-1 (AU) (XPath ACSOrdChange/AXbody/AXitem/acsComInfo) 0-1 (AU)
<b>acsPack</b>	type of wrapping or packing of the accessory (XPath ACSOrdChange/AXbody/AXitem/acsComInfo/acsPack) 0-1 (U) (XPath ACSOrdChange/acsComInfo/acsPack) 0-1 (U)
<b>allowanceCharge</b>	Allowances and Charges related to an Order or a contract (XPath ACSOrdChange/terms/allowanceCharge) 0-9 (A)
<b>attachment</b>	an attached document. An attachment can refer to an external document or be included with the document being exchanged (XPath ACSOrdChange/AXbody/AXitem/refDoc/attachment) 0-1 (N) (XPath ACSOrdChange/TXheader/refDoc/attachment) 0-1 (N)
<b>AXbody</b>	body of the document ACCESSORY ORDER RESPONSE and CHANGE (XPath ACSOrdChange/AXbody) 1-1
<b>AXitem</b>	line item of the message ACCESSORY ORDER RESPONSE and ORDER CHANGE (XPath ACSOrdChange/AXbody/AXitem) 1-unbounded (P)
<b>bank</b>	details of the financial institution - base type: Nad, (XPath ACSOrdChange/AXbody/AXitem/finInfo/bank) 0-1 (N*)
<b>bankIT</b>	Italian bank operations code (DEPRECATED, use IBAN) (XPath ACSOrdChange/AXbody/AXitem/finInfo/bankIT) 1-1
<b>buyer</b>	details of the Buyer (party that buys the good or service that is object of the current collaborative process) - base type: Nad, (XPath ACSOrdChange/TXheader/buyer) 1-1 (AP)
<b>csRange</b>	range of color-size for a fashion article (XPath ACSOrdChange/AXbody/AXitem/csRange) 0-99 (P)
<b>dtScheme</b>	set of data usable to declare the duty or tax applied (XPath ACSOrdChange/terms/allowanceCharge/dtScheme) 0-1 (P) (XPath ACSOrdChange/AXbody/AXitem/dtScheme) 0-1 (P) - note: <i>recommended alternative to the attribute @VAT</i>
<b>externalReference</b>	details about an external object, such as a document stored at a remote location (XPath ACSOrdChange/AXbody/AXitem/refDoc/attachment/externalReference) 0-99 (N) (XPath ACSOrdChange/TXheader/refDoc/attachment/externalReference) 0-99 (N)

<b>finInfo</b>	bank details relevant for the payment: bank coordinates, SWIFT code, account (XPath ACSOrdChange/AXbody/AXitem/finInfo) 0-1 (P)
<b>garmentVariant</b>	garment product variant (XPath ACSOrdChange/AXbody/AXitem/csRange/garmentVariant) 0-9 (N) - note: <i>used only if not already specified in the article code</i>
<b>insPayment</b>	payment details for payment by installments (XPath ACSOrdChange/terms/insPayment) 0-5 - note: <i>excluded the case of offers, this set of data is alternative to payment set and must be iterated for each payment installment</i>
<b>itemIdentification</b>	serial identification of a product unit (XPath ACSOrdChange/AXbody/AXitem/csRange/sizeMatrix/sizeRow/itemsList/itemIdentification) 1-unbounded (N) - note: <i>identification of the single product unit contained in the list</i>
<b>itemsList</b>	list of the single product units (XPath ACSOrdChange/AXbody/AXitem/csRange/sizeMatrix/sizeRow/itemsList) 0-1 (N) - note: <i>the usage in this position is alternative to its usage within the document line element</i>
<b>payment</b>	payment details for payment all in one (XPath ACSOrdChange/terms/payment) 0-5 - note: <i>excluded the case of offers, this set of data is alternative to insPayment, it can be iterated to specify alternative terms of payment (e.g.: 60 days or 30 days with 3% discount)</i>
<b>refDoc</b>	identification of a document and of an item thereof, to which the message makes reference (XPath ACSOrdChange/TXheader/refDoc) 1-9 (P) - note: <i>At least one occurrence should contain a reference to the order it responds to (for example docType=ORD or OCH or BOR)</i> (XPath ACSOrdChange/AXbody/AXitem/refDoc) 1-9 (P) - note: <i>Use to link the line of the present document to the line of the order, use refDoc element; numberingOrg indicates the role that produced the document and such reference, customer or supplier (both might be reported through two instances of refDoc)</i>
<b>sizeMatrix</b>	size matrix of an apparel product (XPath ACSOrdChange/AXbody/AXitem/csRange/sizeMatrix) 1-1
<b>sizeRow</b>	size matrix row of an apparel product (XPath ACSOrdChange/AXbody/AXitem/csRange/sizeMatrix/sizeRow) 1-99 (P)
<b>supplier</b>	details of the Supplier (party that supplies the good or service that is object of the current collaborative process) - base type: Nad, (XPath ACSOrdChange/TXheader/supplier) 1-1 (AP)
<b>terms</b>	details of the commercial obligations for payment and delivery (XPath ACSOrdChange/terms) 0-1 (P)
<b>thirdParty</b>	details of the Third Party, different from Sender and Receiver of the document - base type: Nad, (XPath ACSOrdChange/TXheader/thirdParty) 0-5 (AP) (XPath ACSOrdChange/AXbody/AXitem/thirdParty) 0-3 (AP)
<b>totals</b>	monetary and quantity totals of the Order (XPath ACSOrdChange/totals) 0-1
<b>trade</b>	general terms of trade for the specified supply (XPath ACSOrdChange/terms/trade) 0-1

<b>transInfo</b>	details of transport: mode, carrier and delivery place (XPath ACSOrdChange/terms/transInfo) 0-5 (pAP)
<b>TXheader</b>	header of the TEXTILES ORDER RESPONSE and TEXTILES ORDER CHANGE (XPath ACSOrdChange/TXheader) 1-1 (P)

## 2.2.2 Simple elements (Basic Business Information Entities)

Simple elements are those elements whose content is characterized by a data type plus a domain of possible values. Simple elements are alphabetically ordered.

abi	ABI code - base type: string, length: 5, (XPath ACSOrdChange/AXbody/AXitem/finInfo/bankIT/abi) 1-1
AC_amount	amount of an Allowance or Charge - base type: decimal, fraction digits: 2, (XPath ACSOrdChange/terms/allowanceCharge/AC_amount) 1-1 (A)
AC_category	coded specification of an Allowance or Charge - base type: string, cod. table: T41 <a href="http://www.ebiz.enea.it/moda-ml/repository/codelist/v2018-1/gc_T41.xml">http://www.ebiz.enea.it/moda-ml/repository/codelist/v2018-1/gc_T41.xml</a> (XPath ACSOrdChange/terms/allowanceCharge/AC_category) 1-1
AC_categoryText	free text description of an Allowance or Charge - base type: string, max length: 250, (XPath ACSOrdChange/terms/allowanceCharge/AC_categoryText) 1-1 (U)
AC_percent	amount of an Allowance or Charge as a percentage (always non negative value) - base type: decimal, max inclusive: 100, fraction digits: 2, (XPath ACSOrdChange/terms/allowanceCharge/AC_percent) 1-1
accountN	account number - base type: string, max length: 15, (XPath ACSOrdChange/AXbody/AXitem/finInfo/bankIT/accountN) 1-1
accountName	account name - base type: string, max length: 250, (XPath ACSOrdChange/AXbody/AXitem/finInfo/accountName) 0-1 (N)
acsPackCode	code specifying the type of wrapping or packing used for the accessory - base type: string, (XPath ACSOrdChange/AXbody/AXitem/acsComInfo/acsPack/acsPackCode) 1-1 (AU) (XPath ACSOrdChange/acsComInfo/acsPack/acsPackCode) 1-1 (AU)
acsPackText	free text specifying the type of wrapping or packing used for the accessory - base type: string, max length: 250, (XPath ACSOrdChange/acsComInfo/acsPack/acsPackText) 1-1 (U) (XPath ACSOrdChange/AXbody/AXitem/acsComInfo/acsPack/acsPackText) 1-1 (U)
@act	status that the current line assigns to the line addressed in the reference document; if it is already canceled it maintains the status. - base type: string, cod. table: NT5 <a href="http://www.ebiz.enea.it/moda-ml/repository/codelist/v2018-1/gc_NT5.xml">http://www.ebiz.enea.it/moda-ml/repository/codelist/v2018-1/gc_NT5.xml</a> (XPath ACSOrdChange/AXbody/AXitem/@act) [Required]
added	additional code of the product (complementing the formers) - base type: string, max length: 80, (XPath ACSOrdChange/AXbody/AXitem/acsCode/added) 0-9 - note: <i>here an additional codification (see table T44) can be specified</i>

additionalComponentCode	<p>an additional code to identify a fashion product or a part of it (it is a way to codify the item, but it is not one of the codes to identify it). It is not a serial identifier.</p> <p>- base type: string,  (XPath ACSOrdChange/AXbody/AXitem/csRange/sizeMatrix/sizeRow/additionalComponentCode) 0-9 (N)</p>
additionalIdentifier	<p>additional identification code of a Party, for example customs registries or others</p> <p>- base type: string, max length: 15,  (XPath ACSOrdChange/TXheader/buyer/additionalIdentifier) 0-9 (N)</p> <p>- note: <i>identifiers for example for exports, such as MID (Manufacturer Identification Code), EORI (E.O.R.I. - Economic Operator Registration and Identification)</i>  (XPath ACSOrdChange/TXheader/supplier/additionalIdentifier) 0-9 (N)</p> <p>- note: <i>identifiers for example for exports, such as MID (Manufacturer Identification Code), EORI (E.O.R.I. - Economic Operator Registration and Identification)</i></p>
@addType	<p>qualifier of the additional coding of a product</p> <p>- base type: string, cod. table: T44  <a href="http://www.ebiz.enea.it/moda-ml/repository/codelist/v2018-1/gc_T44.xml">http://www.ebiz.enea.it/moda-ml/repository/codelist/v2018-1/gc_T44.xml</a>  (XPath ACSOrdChange/AXbody/AXitem/acsCode/added/@addType) [Optional]</p> <p>- nota: <i>addType allows the clarification of the meaning of the added element content; it is strongly suggested to use it always.</i></p>
art	<p>article number of the product</p> <p>- base type: string, max length: 80,  (XPath ACSOrdChange/AXbody/AXitem/acsCode/art) 1-1 (U)</p>
binaryObject	<p>a binary large object containing an attached document, Coding 'base64Binary' is recommended.</p> <p>- base type: base64Binary,  (XPath ACSOrdChange/AXbody/AXitem/refDoc/attachment/binaryObject) 0-1 (N)  (XPath ACSOrdChange/TXheader/refDoc/attachment/binaryObject) 0-1 (N)</p>
brand	<p>A brand name.</p> <p>- base type: string,  (XPath ACSOrdChange/AXbody/AXitem/acsComInfo/brand) 0-1 (N)  (XPath ACSOrdChange/acsComInfo/brand) 0-1 (N)</p>
cab	<p>CAB code</p> <p>- base type: string, length: 5,  (XPath ACSOrdChange/AXbody/AXitem/finInfo/bankIT/cab) 1-1</p>
carrier	<p>identification of the transport carrier</p> <p>- base type: string, max length: 40,  (XPath ACSOrdChange/terms/transInfo/carrier) 0-1</p>
@characterSet	<p>the character set of the binary object (examples UTF-8, UTF-16, Windows-1252, ISO-8859-7,..)</p> <p>- base type: normalizedString,  (XPath ACSOrdChange/TXheader/refDoc/attachment/binaryObject/@characterSet) [Optional] (N)  (XPath ACSOrdChange/AXbody/AXitem/refDoc/attachment/binaryObject/@characterSet) [Optional] (N)</p>
characterSetCode	<p>the character set of an external document (examples UTF-8, UTF-16, Windows-1252, ISO-8859-7,..)</p> <p>- base type: normalizedString,  (XPath ACSOrdChange/AXbody/AXitem/refDoc/attachment/externalReference/characterSetCode) 0-1 (N)  (XPath ACSOrdChange/TXheader/refDoc/attachment/externalReference/characterSetCode) 0-1 (N)</p>



cin	<p>CIN code</p> <ul style="list-style-type: none"> <li>- base type: string, length: 5, (XPath ACSOrdChange/AXbody/AXitem/finInfo/bankIT/cin) 0-1</li> </ul>
city	<p>name of the city (town, village)</p> <ul style="list-style-type: none"> <li>- base type: string, max length: 40, (XPath ACSOrdChange/TXheader/supplier/city) 0-1 (XPath ACSOrdChange/AXbody/AXitem/thirdParty/city) 0-1 (XPath ACSOrdChange/AXbody/AXitem/finInfo/bank/city) 0-1 (XPath ACSOrdChange/TXheader/thirdParty/city) 0-1 (XPath ACSOrdChange/TXheader/buyer/city) 0-1</li> </ul>
@codeList	<p>it specifies the URL where the list of codes used to make an instance of the element can be found</p> <ul style="list-style-type: none"> <li>- base type: string, max length: 255, (XPath ACSOrdChange/AXbody/AXitem/note/@codeList) [Optional]</li> <li>- nota: <i>must be used to provide (URL) the list of codes used in "noteLabel"</i> (XPath ACSOrdChange/acsComInfo/note/@codeList) [Optional]</li> <li>- nota: <i>must be used to provide (URL) the list of codes used in "noteLabel"</i> (XPath ACSOrdChange/AXbody/AXitem/csRange/garmentVariant/variantCode/@codeList) [Optional]</li> <li>- nota: <i>at least one out of this attribute and "numberingOrg" should be set</i> (XPath ACSOrdChange/AXbody/AXitem/acsComInfo/acsPack/acsPackCode/@codeList) [Optional] ( a )</li> <li>- nota: <i>at least one out of this attribute and "numberingOrg" should be set</i> (XPath ACSOrdChange/AXbody/AXitem/csRange/sizeMatrix/sizeRow/drop/@codeList) [Optional]</li> <li>(XPath ACSOrdChange/AXbody/AXitem/refDoc/season/@codeList) [Optional] ( a )</li> <li>- nota: <i>this attribute should be used either single or coupled with "listName" and "listVersion"</i> (XPath ACSOrdChange/AXbody/AXitem/dtScheme/note/@codeList) [Optional]</li> <li>- nota: <i>must be used to provide (URL) the list of codes used in "noteLabel"</i> (XPath ACSOrdChange/AXbody/AXitem/dtScheme/legalRef/@codeList) [Optional] ( a )</li> <li>(XPath ACSOrdChange/AXbody/AXitem/csRange/garmentVariant/variantType/@codeList) [Optional]</li> <li>- nota: <i>always at least one out of this attribute and "numberingOrg" should be set</i> (XPath ACSOrdChange/TXheader/note/@codeList) [Optional]</li> <li>- nota: <i>must be used to provide (URL) the list of codes used in "noteLabel"</i> (XPath ACSOrdChange/AXbody/AXitem/acsComInfo/note/@codeList) [Optional]</li> <li>- nota: <i>must be used to provide (URL) the list of codes used in "noteLabel"</i> (XPath ACSOrdChange/TXheader/refDoc/season/@codeList) [Optional] ( a )</li> <li>- nota: <i>this attribute should be used either single or coupled with "listName" and "listVersion"</i> (XPath ACSOrdChange/AXbody/AXitem/acsComInfo/brand/@codeList) [Optional] ( a )</li> <li>- nota: <i>at least one out of this attribute and "numberingOrg" should be set</i> (XPath ACSOrdChange/acsComInfo/season/@codeList) [Optional] ( a )</li> <li>- nota: <i>this attribute should be used either single or coupled with "listName" and "listVersion"</i> (XPath ACSOrdChange/AXbody/AXitem/csRange/sizeMatrix/sizeRow/additionalComponentCode/@codeList) [Optional] ( a )</li> <li>- nota: <i>at least one out of this attribute and "numberingOrg" should be set</i> (XPath ACSOrdChange/terms/allowanceCharge/dtScheme/legalRef/@codeList) [Optional]</li> <li>(XPath ACSOrdChange/terms/allowanceCharge/dtScheme/note/@codeList) [Optional]</li> <li>- nota: <i>must be used to provide (URL) the list of codes used in "noteLabel"</i> (XPath ACSOrdChange/AXbody/AXitem/acsComInfo/productLine/@codeList) [Optional] ( a )</li> <li>- nota: <i>at least one out of this attribute and "numberingOrg" should be set</i></li> </ul>



	<p>(XPath  ACSOrdChange/AXbody/AXitem/acsComInfo/operationalCode/@codeList) [Optional] (a)  - nota: at least one out of this attribute and "numberingOrg" should be set  (XPath ACSOrdChange/AXbody/AXitem/acsComInfo/season/@codeList) [Optional] (a)  - nota: this attribute should be used either single or coupled with "listName" and "listVersion"  (XPath ACSOrdChange/acsComInfo/operationalCode/@codeList) [Optional] (a)  - nota: at least one out of this attribute and "numberingOrg" should be set  (XPath ACSOrdChange/AXbody/AXitem/csRange/drop/@codeList) [Optional]  (XPath ACSOrdChange/acsComInfo/brand/@codeList) [Optional] (a)  - nota: at least one out of this attribute and "numberingOrg" should be set  (XPath ACSOrdChange/acsComInfo/productLine/@codeList) [Optional] (a)  - nota: at least one out of this attribute and "numberingOrg" should be set  (XPath ACSOrdChange/AXbody/AXitem/csRange/sizeMatrix/sizeRow/size/@codeList) [Optional]  (XPath ACSOrdChange/AXbody/AXitem/acsCode/pattern/@codeList) [Optional]  - nota: at least one out of this attribute and "numberingOrg" should be set  (XPath ACSOrdChange/AXbody/AXitem/acsCode/art/@codeList) [Optional]  - nota: at least one out of this attribute and "numberingOrg" should be set  (XPath ACSOrdChange/AXbody/AXitem/finInfo/note/@codeList) [Optional]  - nota: must be used to provide (URL) the list of codes used in "noteLabel"  (XPath ACSOrdChange/AXbody/AXitem/csRange/color/@codeList) [Optional]  - nota: this attribute should be used either single or coupled with "listName" and "listVersion"  (XPath ACSOrdChange/AXbody/AXitem/acsCode/color/@codeList) [Optional]  - nota: this attribute should be used either single or coupled with "listName" and "listVersion"  (XPath ACSOrdChange/AXbody/AXitem/csRange/sizeMatrix/sizeRow/itemsList/qualityLevel/@codeList) [Optional] (a)  - nota: at least one out of this attribute and "numberingOrg" should be set</p>
@codeQualifier	<p>operational code qualifier: it states if the code is related to a project, an event, an initiative, a sales channel, a management type (eg CITES), .....</p> <p>- base type: string, cod. table: NT43  <a href="http://www.ebiz.enea.it/moda-ml/repository/codelist/v2018-1/gc_NT43.xml">http://www.ebiz.enea.it/moda-ml/repository/codelist/v2018-1/gc_NT43.xml</a>  (XPath  ACSOrdChange/AXbody/AXitem/acsComInfo/operationalCode/@codeQualifier) [Optional] (Na)  (XPath ACSOrdChange/acsComInfo/operationalCode/@codeQualifier) [Optional] (Na)</p>
collection	<p>identifier of collection (i.e.a clothing)  - base type: string, max length: 250,  (XPath ACSOrdChange/AXbody/AXitem/acsComInfo/collection) 0-1  (XPath ACSOrdChange/acsComInfo/collection) 0-1</p>
color	<p>colour number of the product, when not included in the model or fabric code  - base type: string, max length: 15,  (XPath ACSOrdChange/AXbody/AXitem/acsCode/color) 0-1  (XPath ACSOrdChange/AXbody/AXitem/csRange/color) 0-1  - note: used only if not already specified in the article code</p>
comDiscount	<p>percent discount applied to the related unit price or amount  - base type: decimal, min inclusive: 0, max inclusive: 100, fraction digits: 2,  (XPath ACSOrdChange/AXbody/AXitem/comDiscount) 0-1</p>
country	<p>code of the nation  - base type: string, cod. table: T10  <a href="http://www.ebiz.enea.it/moda-ml/repository/codelist/v2018-1/gc_T10.xml">http://www.ebiz.enea.it/moda-ml/repository/codelist/v2018-1/gc_T10.xml</a>  (XPath ACSOrdChange/AXbody/AXitem/finInfo/bank/country) 0-1  (XPath ACSOrdChange/TXheader/buyer/country) 0-1  (XPath ACSOrdChange/TXheader/supplier/country) 0-1  (XPath ACSOrdChange/TXheader/thirdParty/country) 0-1  (XPath ACSOrdChange/AXbody/AXitem/thirdParty/country) 0-1</p>

@currency	<p>currency in which a specified monetary data is expressed</p> <p>- base type: string, cod. table: T9  <a href="http://www.ebiz.enea.it/moda-ml/repository/codelist/v2018-1/gc_T9.xml">http://www.ebiz.enea.it/moda-ml/repository/codelist/v2018-1/gc_T9.xml</a>  (XPath ACSOrdChange/terms/allowanceCharge/@currency) [Optional] (a)  (XPath ACSOrdChange/AXbody/AXitem/price/@currency) [Optional] (a)</p> <p>- nota: <i>Currency referred by the price.</i>  (XPath ACSOrdChange/totals/goodsAmount/@currency) [Optional] (a)  (XPath ACSOrdChange/terms/allowanceCharge/AC_amount/@currency) [Optional] (a)</p>
@currencyUseQualifier	<p>qualification of another currency used in the document</p> <p>- base type: string, cod. table: NT19  <a href="http://www.ebiz.enea.it/moda-ml/repository/codelist/v2018-1/gc_NT19.xml">http://www.ebiz.enea.it/moda-ml/repository/codelist/v2018-1/gc_NT19.xml</a>  (XPath ACSOrdChange/TXheader/otherCurrency/@currencyUseQualifier) [Required]</p>
@dateForm	<p>format used for the date</p> <p>- base type: string, cod. table: NT29  <a href="http://www.ebiz.enea.it/moda-ml/repository/codelist/v2018-1/gc_NT29.xml">http://www.ebiz.enea.it/moda-ml/repository/codelist/v2018-1/gc_NT29.xml</a>  (XPath ACSOrdChange/AXbody/AXitem/acsComInfo/deliveryDate/@dateForm) [Optional]  (XPath ACSOrdChange/acsComInfo/deliveryDate/@dateForm) [Optional]  (XPath ACSOrdChange/AXbody/AXitem/acsComInfo/specDate/@dateForm) [Optional]  (XPath ACSOrdChange/acsComInfo/specDate/@dateForm) [Optional]  (XPath ACSOrdChange/TXheader/msgDate/@dateForm) [Optional]  (XPath ACSOrdChange/TXheader/validityEnd/@dateForm) [Optional]  (XPath ACSOrdChange/AXbody/AXitem/refDoc/docDate/@dateForm) [Optional]  (XPath ACSOrdChange/TXheader/refDoc/docDate/@dateForm) [Optional]  (XPath ACSOrdChange/terms/transInfo/despatchDate/@dateForm) [Optional] (a)  (XPath ACSOrdChange/terms/transInfo/delEffectiveDate/@dateForm) [Optional]</p>
delEffectiveDate	<p>effective date of delivery of goods (declared in Despatch), according to one of the patterns YYYY-MM-DD, YYYY-MM-DD:HH-MM or YYYY-WW.</p> <p>- base type: string,  (XPath ACSOrdChange/terms/transInfo/delEffectiveDate) 0-1 (p)</p>
deliveryDate	<p>date of delivery of goods, requested or promised in the purchase process, according to one of the patterns YYYY-MM-DD, YYYY-MM-DD:HH-MM or YY YY-WW.</p> <p>- base type: string,  (XPath ACSOrdChange/AXbody/AXitem/acsComInfo/deliveryDate) 0-1  (XPath ACSOrdChange/acsComInfo/deliveryDate) 0-1</p>
deliveryPlace	<p>place of delivery of goods, ultimate or related to a given leg</p> <p>- base type: string, max length: 250,  (XPath ACSOrdChange/terms/transInfo/deliveryPlace) 0-1 (U)</p>
dept	<p>name or code of a contact department within a Party</p> <p>- base type: string, max length: 40,  (XPath ACSOrdChange/TXheader/buyer/dept) 0-1  (XPath ACSOrdChange/TXheader/supplier/dept) 0-1  (XPath ACSOrdChange/AXbody/AXitem/thirdParty/dept) 0-1  (XPath ACSOrdChange/AXbody/AXitem/finInfo/bank/dept) 0-1  (XPath ACSOrdChange/TXheader/thirdParty/dept) 0-1</p>
description	<p>free text description. The content of the element must be unique, it might be translated and repeated into more languages (thus no more than one instance for each language).</p> <p>- base type: string, max length: 250,  (XPath ACSOrdChange/AXbody/AXitem/acsCode/description) 0-unbounded (AU)  - note: <i>Product description</i></p>
despatchDate	<p>date of despatch of goods, requested or promised in the purchase process, according to one of the patterns YYYY-MM-DD, YYYY-MM-DD:HH-MM or YY YY-WW.</p> <p>- base type: string,</p>

	(XPath ACSOrdChange/terms/transInfo/despatchDate) 0-1 (N)
despatchPlace	place of despatch of goods, origin or related to a given leg - base type: string, max length: 250, (XPath ACSOrdChange/terms/transInfo/despatchPlace) 0-1 (N)
docDate	date of issue of the referenced document, according to one of the patterns Y YYY-MM-DD, YYYY-MM-DD:HH-MM or YYYY-WW. - base type: string, (XPath ACSOrdChange/AXbody/AXitem/refDoc/docDate) 0-1 (XPath ACSOrdChange/TXheader/refDoc/docDate) 0-1
docID	identification number of the referenced document SINCE 2008-1 ITS USE I N THE HEADER IS DISCOURAGED (REPLACED BY msgID) - base type: string, max length: 80, (XPath ACSOrdChange/TXheader/refDoc/docID) 1-2 (p) <hr/> <b>AAAA-WARNING! - text not AVAILABLE n. 245 - In=en</b> (XPath ACSOrdChange/TXheader/docID) 0-1 (XPath ACSOrdChange/AXbody/AXitem/refDoc/docID) 1-2 (p) <hr/> <b>AAAA-WARNING! - text not AVAILABLE n. 245 - In=en</b>
@docType	type or class to which the referenced document belongs - base type: string, cod. table: T21 <a href="http://www.ebiz.enea.it/moda-ml/repository/codelist/v2018-1/gc_T21.xml">http://www.ebiz.enea.it/moda-ml/repository/codelist/v2018-1/gc_T21.xml</a> (XPath ACSOrdChange/AXbody/AXitem/refDoc/@docType) [Required] (XPath ACSOrdChange/TXheader/refDoc/@docType) [Required]
drop	drop number of the garment - base type: string, max length: 15, (XPath ACSOrdChange/AXbody/AXitem/csRange/sizeMatrix/ sizeRow/drop) 0-1 (A) - note: <i>DEPRECATED, anyhow it is used only if not already specified in the article code or csRange</i> (XPath ACSOrdChange/AXbody/AXitem/csRange/drop) 0-1 (Ap) - note: <i>used only if not already specified in the article code</i>
@email	electronic mail address of the contact person within a Party - base type: string, max length: 250, (XPath ACSOrdChange/TXheader/thirdParty/person/@email) [Optional] (XPath ACSOrdChange/AXbody/AXitem/thirdParty/person/@email) [Optional] (XPath ACSOrdChange/TXheader/buyer/person/@email) [Optional] (XPath ACSOrdChange/TXheader/supplier/person/@email) [Optional] (XPath ACSOrdChange/AXbody/AXitem/finInfo/bank/person/@email) [Optional]
@encoding	specifies the decoding algorithm of the binary object - base type: normalizedString, (XPath ACSOrdChange/TXheader/refDoc/attachment/ binaryObject/@encoding) [Optional] (N) (XPath ACSOrdChange/AXbody/AXitem/refDoc/attachment/ binaryObject/@encoding) [Optional] (N)
encodingCode	the encoding/decoding algorithm used with the external object (example is ' base64Binary') - base type: normalizedString, (XPath ACSOrdChange/AXbody/AXitem/refDoc/attachment/ externalReference/encodingCode) 0-1 (N) (XPath ACSOrdChange/TXheader/refDoc/attachment/ externalReference/encodingCode) 0-1 (N)
@endUse	specifies the final use of the fabric - base type: string, cod. table: NT4 <a href="http://www.ebiz.enea.it/moda-ml/repository/codelist/v2018-1/gc_NT4.xml">http://www.ebiz.enea.it/moda-ml/repository/codelist/v2018-1/gc_NT4.xml</a> (XPath ACSOrdChange/acsComInfo/@endUse) [Optional] [Default= PR] (a) - nota: <i>When used for accessory, use only PR: Production or SA: Sample co des.</i>

	<p>(XPath ACSOrdChange/AXbody/AXitem/acsComInfo/@endUse) [Optional] [Default=PR] (a)</p> <p>- nota: When used for accessory, use only PR: Production or SA: Sample codes.</p>
@exchangeRate	<p>Currency exchange rate</p> <p>- base type: decimal, min inclusive: 0,</p> <p>(XPath ACSOrdChange/TXheader/otherCurrency/@exchangeRate) [Optional] (N)</p> <p>- nota: Set the exchange rate of this currency to be applied on the message currency (msgCurrency) to obtain the final value in this currency.</p>
@fax	<p>fax number of the contact person within a Party</p> <p>- base type: string, max length: 35,</p> <p>(XPath ACSOrdChange/AXbody/AXitem/thirdParty/person/@fax) [Optional]</p> <p>(XPath ACSOrdChange/TXheader/thirdParty/person/@fax) [Optional]</p> <p>(XPath ACSOrdChange/TXheader/buyer/person/@fax) [Optional]</p> <p>(XPath ACSOrdChange/TXheader/supplier/person/@fax) [Optional]</p> <p>(XPath ACSOrdChange/AXbody/AXitem/finInfo/bank/person/@fax) [Optional]</p>
fileName	<p>unique identifier (name) of the file</p> <p>- base type: string, max length: 255,</p> <p>(XPath ACSOrdChange/TXheader/refDoc/attachment/fileName) 0-1 (N)</p> <p>(XPath ACSOrdChange/AXbody/AXitem/refDoc/attachment/fileName) 0-1 (N)</p>
@finDiscount	<p>financial discount rate applied for payment by the date specified</p> <p>- base type: decimal, min inclusive: 0, max inclusive: 100, fraction digits: 2,</p> <p>(XPath ACSOrdChange/terms/payment/@finDiscount) [Optional]</p>
@finSurcharge	<p>financial surcharge rate applied for payment after the date specified</p> <p>- base type: decimal, min inclusive: 0, max inclusive: 100, fraction digits: 2,</p> <p>(XPath ACSOrdChange/terms/payment/@finSurcharge) [Optional]</p>
@format	<p>the format of the binary content (examples xml, pdf, doc,...)</p> <p>- base type: string,</p> <p>(XPath ACSOrdChange/TXheader/refDoc/attachment/binaryObject/@format) [Optional] (N)</p> <p>(XPath ACSOrdChange/AXbody/AXitem/refDoc/attachment/binaryObject/@format) [Optional] (N)</p>
formatCode	<p>the format of the external object (examples xml, pdf, doc,...)</p> <p>- base type: normalizedString,</p> <p>(XPath ACSOrdChange/AXbody/AXitem/refDoc/attachment/externalReference/formatCode) 0-1 (N)</p> <p>(XPath ACSOrdChange/TXheader/refDoc/attachment/externalReference/formatCode) 0-1 (N)</p>
goodsAmount	<p>total monetary value of the goods and services considered in the message</p> <p>- base type: decimal, min inclusive: 0, fraction digits: 2,</p> <p>(XPath ACSOrdChange/totals/goodsAmount) 1-1 (A)</p>
grossWeight	<p>the gross weight, declared for transport or customs purpose</p> <p>- base type: decimal, min inclusive: 0, fraction digits: 2,</p> <p>(XPath ACSOrdChange/terms/transInfo/grossWeight) 0-1</p>
iban	<p>international bank and account identifier, used for fund transfer</p> <p>- base type: string, max length: 35,</p> <p>(XPath ACSOrdChange/AXbody/AXitem/finInfo/iban) 1-1</p>
id	<p>primary identification code of a Party; it is recommended the format: nation code (ISO 3166) + VAT identification number (11 crt), with the qualifier "numbingOrg"= MF</p> <p>- base type: string, max length: 15,</p> <p>(XPath ACSOrdChange/TXheader/thirdParty/id) 1-1</p> <p>(XPath ACSOrdChange/AXbody/AXitem/thirdParty/id) 1-1</p> <p>(XPath ACSOrdChange/TXheader/buyer/id) 1-1 (p)</p> <p>(XPath ACSOrdChange/TXheader/supplier/id) 1-1</p>

@idQualifier	<p>Qualification of the identifier.</p> <ul style="list-style-type: none"> <li>- base type: string, (XPath ACSOrdChange/AXbody/AXitem/csRange/sizeMatrix/sizeRow/itemsList/itemIdentification/serialN/@idQualifier) [Optional] (N)</li> <li>- nota: <i>this attribute should be used when the numberingOrg attribute is not enough to declare the type of serial identifier</i> (XPath ACSOrdChange/TXheader/supplier/additionalIdentifier/@idQualifier) [Optional] (Na)</li> <li>- nota: <i>this attribute should be used when the numberingOrg attribute is not enough to declare the type of identifier</i> (XPath ACSOrdChange/TXheader/buyer/additionalIdentifier/@idQualifier) [Optional] (Na)</li> <li>- nota: <i>this attribute should be used when the numberingOrg attribute is not enough to declare the type of identifier</i></li> </ul>
incoTerm	<p>specification of the terms of trade (INCOTERMS)</p> <ul style="list-style-type: none"> <li>- base type: string, cod. table: T3 <a href="http://www.ebiz.enea.it/moda-ml/repository/codelist/v2018-1/gc_T3.xml">http://www.ebiz.enea.it/moda-ml/repository/codelist/v2018-1/gc_T3.xml</a> (XPath ACSOrdChange/terms/trade/incoTerm) 1-1</li> </ul>
incoTermText	<p>free text specifying the terms of trade (incoterm, location)</p> <ul style="list-style-type: none"> <li>- base type: string, max length: 250, (XPath ACSOrdChange/terms/trade/incoTermText) 1-1 (U)</li> </ul>
@isCharge	<p>Indicates if the element to which it refers is a charge (true = charge, false = allowance)</p> <ul style="list-style-type: none"> <li>- base type: boolean, min length: 0, (XPath ACSOrdChange/terms/allowanceCharge/@isCharge) [Optional] (N)</li> </ul>
@isURL	<p>it indicates if the referred element is an URL (true) or not (false)</p> <ul style="list-style-type: none"> <li>- base type: boolean, (XPath ACSOrdChange/AXbody/AXitem/refDoc/attachment/externalReference/uri/@isURL) [Optional] [Default= true] (Na)</li> <li>- nota: <i>usage of URLs is recommended</i> (XPath ACSOrdChange/TXheader/refDoc/attachment/externalReference/uri/@isURL) [Optional] [Default= true] (Na)</li> <li>- nota: <i>usage of URLs is recommended</i></li> </ul>
itemID	<p>number of the line/item of the referenced document</p> <ul style="list-style-type: none"> <li>- base type: string, max length: 40, (XPath ACSOrdChange/AXbody/AXitem/refDoc/itemID) 0-1 (U) (XPath ACSOrdChange/TXheader/refDoc/itemID) 0-1 (U)</li> </ul>
legalName	<p>legal name of a Party</p> <ul style="list-style-type: none"> <li>- base type: string, max length: 250, (XPath ACSOrdChange/AXbody/AXitem/thirdParty/legalName) 0-1 (U) (XPath ACSOrdChange/TXheader/supplier/legalName) 0-1 (U) (XPath ACSOrdChange/AXbody/AXitem/finInfo/bankIT/legalName) 0-1 (U) (XPath ACSOrdChange/AXbody/AXitem/finInfo/bank/legalName) 0-1 (U) (XPath ACSOrdChange/TXheader/buyer/legalName) 0-1 (U) (XPath ACSOrdChange/TXheader/thirdParty/legalName) 0-1 (U)</li> </ul>
legalRef	<p>legal reference of the duty or tax or fee category</p> <ul style="list-style-type: none"> <li>- base type: string, (XPath ACSOrdChange/AXbody/AXitem/dtScheme/legalRef) 0-1 (A) (XPath ACSOrdChange/terms/allowanceCharge/dtScheme/legalRef) 0-1 (A)</li> </ul>
lineID	<p>unique identifier of the line item of the business document; it is set by the role that produces the document.</p> <ul style="list-style-type: none"> <li>- base type: string, max length: 30, (XPath ACSOrdChange/AXbody/AXitem/lineID) 0-1 (N)</li> </ul>
lineN	<p>number of the line item of the present message (xml document); it is set by the role that produces the document. Usually it is a progressive number, but</p>



	<p>not always.</p> <ul style="list-style-type: none"> <li>- base type: positiveInteger, min inclusive: 1, max inclusive: 9999, (XPath ACSOrdChange/AXbody/AXitem/lineN) 1-1</li> </ul>
@listName	<p>the name of the list of codes used to make an instance of the element (it might be thought as descriptive element, i.e. 'fabric printing technologies', or not, i.e. "T264")</p> <ul style="list-style-type: none"> <li>- base type: string, max length: 40, (XPath ACSOrdChange/terms/allowanceCharge/dtScheme/legalRef/@listName) [Optional]</li> <li>- nota: <i>this attribute should always be used coupled with "numberingOrg"</i> (XPath ACSOrdChange/AXbody/AXitem/csRange/sizeMatrix/sizeRow/itemsList/qualityLevel/@listName) [Optional] (a)</li> <li>- nota: <i>this attribute should always be used coupled with "numberingOrg"</i> (XPath ACSOrdChange/AXbody/AXitem/csRange/sizeMatrix/sizeRow/drop/@listName) [Optional] (a)</li> <li>- nota: <i>this attribute should always be used coupled with "numberingOrg"</i> (XPath ACSOrdChange/AXbody/AXitem/csRange/sizeMatrix/sizeRow/size/@listName) [Optional] (a)</li> <li>- nota: <i>this attribute should always be used coupled with "numberingOrg"</i> (XPath ACSOrdChange/AXbody/AXitem/refDoc/season/@listName) [Optional] (a)</li> <li>- nota: <i>this attribute should always be used coupled with "numberingOrg"</i> (XPath ACSOrdChange/AXbody/AXitem/csRange/color/@listName) [Optional]</li> <li>- nota: <i>this attribute should always be used coupled with "numberingOrg"</i> (XPath ACSOrdChange/AXbody/AXitem/acsCode/art/@listName) [Optional]</li> <li>- nota: <i>this attribute should always be used coupled with "numberingOrg"</i> (XPath ACSOrdChange/AXbody/AXitem/acsComInfo/operationalCode/@listName) [Optional] (a)</li> <li>- nota: <i>this attribute should always be used coupled with "numberingOrg"</i> (XPath ACSOrdChange/acsComInfo/productLine/@listName) [Optional] (a)</li> <li>- nota: <i>this attribute should always be used coupled with "numberingOrg"</i> (XPath ACSOrdChange/AXbody/AXitem/acsComInfo/season/@listName) [Optional] (a)</li> <li>- nota: <i>this attribute should always be used coupled with "numberingOrg"</i> (XPath ACSOrdChange/AXbody/AXitem/acsCode/pattern/@listName) [Optional]</li> <li>- nota: <i>this attribute should always be used coupled with "numberingOrg"</i> (XPath ACSOrdChange/AXbody/AXitem/acsComInfo/brand/@listName) [Optional] (a)</li> <li>- nota: <i>this attribute should always be used coupled with "numberingOrg"</i> (XPath ACSOrdChange/acsComInfo/operationalCode/@listName) [Optional] (a)</li> <li>- nota: <i>this attribute should always be used coupled with "numberingOrg"</i> (XPath ACSOrdChange/acsComInfo/brand/@listName) [Optional] (a)</li> <li>- nota: <i>this attribute should always be used coupled with "numberingOrg"</i> (XPath ACSOrdChange/AXbody/AXitem/acsCode/color/@listName) [Optional]</li> <li>- nota: <i>this attribute should always be used coupled with "numberingOrg"</i> (XPath ACSOrdChange/AXbody/AXitem/csRange/garmentVariant/variantCode/@listName) [Optional]</li> <li>- nota: <i>this attribute should always be used coupled with "numberingOrg"</i> (XPath ACSOrdChange/acsComInfo/acsPack/acsPackCode/@listName) [Optional] (a)</li> <li>- nota: <i>this attribute should always be used coupled with "numberingOrg"</i> (XPath ACSOrdChange/AXbody/AXitem/acsComInfo/productLine/@listName) [Optional] (a)</li> <li>- nota: <i>this attribute should always be used coupled with "numberingOrg"</i> (XPath ACSOrdChange/AXbody/AXitem/csRange/drop/@listName) [Optional] (a)</li> <li>- nota: <i>this attribute should always be used coupled with "numberingOrg"</i> (XPath ACSOrdChange/TXheader/refDoc/season/@listName) [Optional] (a)</li> <li>- nota: <i>this attribute should always be used coupled with "numberingOrg"</i> (XPath ACSOrdChange/acsComInfo/season/@listName) [Optional] (a)</li> <li>- nota: <i>this attribute should always be used coupled with "numberingOrg"</i> (XPath ACSOrdChange/AXbody/AXitem/acsComInfo/acsPack/acsPackCode/@listName) [Optional]</li> <li>- nota: <i>this attribute should always be used coupled with "numberingOrg"</i></li> </ul>

	<p>(XPath ACSOrdChange/AXbody/AXitem/dtScheme/legalRef/@listName) [Optional] (a)</p> <p>- nota: <i>this attribute should always be used coupled with “numberingOrg”</i></p> <p>(XPath ACSOrdChange/AXbody/AXitem/csRange/sizeMatrix/sizeRow/additionalComponentCode/@listName) [Optional] (a)</p> <p>- nota: <i>this attribute should always be used coupled with “numberingOrg”</i></p> <p>(XPath ACSOrdChange/AXbody/AXitem/csRange/garmentVariant/variantType/@listName) [Optional]</p> <p>- nota: <i>this attribute should always be used coupled with “numberingOrg”</i></p>
<p>@listVersion</p>	<p>it specifies the version of the list of codes used to make an instance of the element</p> <p>- base type: string, max length: 6,</p> <p>(XPath ACSOrdChange/AXbody/AXitem/csRange/sizeMatrix/sizeRow/additionalComponentCode/@listVersion) [Optional] (a)</p> <p>- nota: <i>this attribute should always be used coupled with “numberingOrg” and “listName”</i></p> <p>(XPath ACSOrdChange/AXbody/AXitem/acsComInfo/productLine/@listVersion) [Optional] (a)</p> <p>- nota: <i>this attribute should always be used coupled with “numberingOrg” and “listName”</i></p> <p>(XPath ACSOrdChange/terms/allowanceCharge/dtScheme/legalRef/@listVersion) [Optional]</p> <p>- nota: <i>this attribute should always be used coupled with “numberingOrg” and “listName”</i></p> <p>(XPath ACSOrdChange/AXbody/AXitem/acsCode/art/@listVersion) [Optional]</p> <p>- nota: <i>this attribute should always be used coupled with “numberingOrg” and “listName”</i></p> <p>(XPath ACSOrdChange/acsComInfo/brand/@listVersion) [Optional] (a)</p> <p>- nota: <i>this attribute should always be used coupled with “numberingOrg” and “listName”</i></p> <p>(XPath ACSOrdChange/AXbody/AXitem/acsComInfo/season/@listVersion) [Optional] (a)</p> <p>- nota: <i>this attribute should always be used coupled with “numberingOrg” and “listName”</i></p> <p>(XPath ACSOrdChange/AXbody/AXitem/csRange/garmentVariant/variantType/@listVersion) [Optional]</p> <p>- nota: <i>this attribute should always be used coupled with “numberingOrg” and “listName”</i></p> <p>(XPath ACSOrdChange/AXbody/AXitem/csRange/sizeMatrix/sizeRow/size/@listVersion) [Optional] (a)</p> <p>- nota: <i>this attribute should always be used coupled with “numberingOrg” and “listName”</i></p> <p>(XPath ACSOrdChange/AXbody/AXitem/csRange/color/@listVersion) [Optional]</p> <p>- nota: <i>this attribute should always be used coupled with “numberingOrg” and “listName”</i></p> <p>(XPath ACSOrdChange/acsComInfo/season/@listVersion) [Optional] (a)</p> <p>- nota: <i>this attribute should always be used coupled with “numberingOrg” and “listName”</i></p> <p>(XPath ACSOrdChange/AXbody/AXitem/csRange/sizeMatrix/sizeRow/drop/@listVersion) [Optional] (a)</p> <p>- nota: <i>this attribute should always be used coupled with “numberingOrg” and “listName”</i></p> <p>(XPath ACSOrdChange/AXbody/AXitem/csRange/drop/@listVersion) [Optional] (a)</p> <p>- nota: <i>this attribute should always be used coupled with “numberingOrg” and “listName”</i></p> <p>(XPath ACSOrdChange/AXbody/AXitem/acsCode/pattern/@listVersion) [Optional]</p> <p>- nota: <i>this attribute should always be used coupled with “numberingOrg” and “listName”</i></p> <p>(XPath ACSOrdChange/AXbody/AXitem/acsCode/color/@listVersion) [Optional]</p> <p>- nota: <i>this attribute should always be used coupled with “numberingOrg” and “listName”</i></p> <p>(XPath ACSOrdChange/AXbody/AXitem/csRange/garmentVariant/variantCode/@listVersion) [Optional]</p>

	<p>- nota: <i>this attribute should always be used coupled with “numberingOrg” and “listName”</i>  (XPath ACSOrdChange/AXbody/AXitem/csRange/sizeMatrix/sizeRow/itemsList/qualityLevel/@listVersion) [Optional] (a)</p> <p>- nota: <i>this attribute should always be used coupled with “numberingOrg” and “listName”</i>  (XPath ACSOrdChange/AXbody/AXitem/refDoc/season/@listVersion) [Optional] (a)</p> <p>- nota: <i>this attribute should always be used coupled with “numberingOrg” and “listName”</i>  (XPath ACSOrdChange/AXbody/AXitem/acsComInfo/acsPack/acsPackCode/@listVersion) [Optional]</p> <p>- nota: <i>this attribute should always be used coupled with “numberingOrg” and “listName”</i>  (XPath ACSOrdChange/acsComInfo/operationalCode/@listVersion) [Optional] (a)</p> <p>- nota: <i>this attribute should always be used coupled with “numberingOrg” and “listName”</i>  (XPath ACSOrdChange/AXbody/AXitem/acsComInfo/brand/@listVersion) [Optional] (a)</p> <p>- nota: <i>this attribute should always be used coupled with “numberingOrg” and “listName”</i>  (XPath ACSOrdChange/AXbody/AXitem/acsComInfo/operationalCode/@listVersion) [Optional] (a)</p> <p>- nota: <i>this attribute should always be used coupled with “numberingOrg” and “listName”</i>  (XPath ACSOrdChange/TXheader/refDoc/season/@listVersion) [Optional] (a)</p> <p>- nota: <i>this attribute should always be used coupled with “numberingOrg” and “listName”</i>  (XPath ACSOrdChange/AXbody/AXitem/dtScheme/legalRef/@listVersion) [Optional] (a)</p> <p>- nota: <i>this attribute should always be used coupled with “numberingOrg” and “listName”</i>  (XPath ACSOrdChange/acsComInfo/acsPack/acsPackCode/@listVersion) [Optional] (a)</p> <p>- nota: <i>this attribute should always be used coupled with “numberingOrg” and “listName”</i>  (XPath ACSOrdChange/acsComInfo/productLine/@listVersion) [Optional] (a)</p> <p>- nota: <i>this attribute should always be used coupled with “numberingOrg” and “listName”</i></p>
@ln	<p>Language code.  - base type: string, cod. table: NT60  <a href="http://www.ebiz.enea.it/moda-ml/repository/codelist/v2018-1/gc_NT60.xml">http://www.ebiz.enea.it/moda-ml/repository/codelist/v2018-1/gc_NT60.xml</a>  (XPath ACSOrdChange/AXbody/AXitem/acsCode/description/@ln) [Optional] (N)</p>
location	<p>specification of a location  - base type: string, max length: 40,  (XPath ACSOrdChange/terms/trade/location) 0-1  - note: <i>place to which the INCOTERM applies</i></p>
@logo	<p>company logo (URL of the image jpeg or gif). It is recommended that the width of the image does not exceed 640 pixel.  - base type: string, max length: 255,  (XPath ACSOrdChange/TXheader/buyer/@logo) [Optional]  (XPath ACSOrdChange/TXheader/supplier/@logo) [Optional]</p>
@LRI	<p>attribute usable to format a string according to a customized User rule (local rule)  - base type: string, cod. table: NT3  <a href="http://www.ebiz.enea.it/moda-ml/repository/codelist/v2018-1/gc_NT3.xml">http://www.ebiz.enea.it/moda-ml/repository/codelist/v2018-1/gc_NT3.xml</a>  (XPath ACSOrdChange/terms/trade/location/@LRI) [Optional]</p>
@maxQty	<p>maximum product quantity  - base type: decimal, min inclusive: 0, fraction digits: 2,  (XPath ACSOrdChange/terms/allowanceCharge/@maxQty) [Optional] (N)</p>



	- nota: <i>maximum quantity of product for the application of this allowance or charge</i>
@mime	the mime type of the binary object - base type: normalizedString, (XPath ACSOrdChange/AXbody/AXitem/refDoc/attachment/binaryObject/@mime) [Optional] (N) (XPath ACSOrdChange/TXheader/refDoc/attachment/binaryObject/@mime) [Optional] (N)
mimeCode	mime type of the external object - base type: normalizedString, (XPath ACSOrdChange/TXheader/refDoc/attachment/externalReference/mimeCode) 0-1 (N) <hr/> <b>AAAA-WARNING! - text not AVAILABLE n. 245 - In=en</b> (XPath ACSOrdChange/AXbody/AXitem/refDoc/attachment/externalReference/mimeCode) 0-1 (N) <hr/> <b>AAAA-WARNING! - text not AVAILABLE n. 245 - In=en</b>
@minQty	minimum product quantity - base type: decimal, min inclusive: 0, fraction digits: 2, (XPath ACSOrdChange/terms/allowanceCharge/@minQty) [Optional] (a) - nota: <i>minimum quantity of product for the application of this allowance or charge</i>
msgCurrency	currency used to express the monetary amounts of the message - base type: string, cod. table: T9 <a href="http://www.ebiz.enea.it/moda-ml/repository/codelist/v2018-1/gc_T9.xml">http://www.ebiz.enea.it/moda-ml/repository/codelist/v2018-1/gc_T9.xml</a> (XPath ACSOrdChange/TXheader/msgCurrency) 0-1
msgDate	date of issue of the present message (xml document), according to one of the patterns YYYY-MM-DD, YYYY-MM-DD:HH-MM or YYYY-WW. - base type: string, (XPath ACSOrdChange/TXheader/msgDate) 1-1
@msgfunction	function performed by the present message with regards to the transmission - base type: string, cod. table: NT18 <a href="http://www.ebiz.enea.it/moda-ml/repository/codelist/v2018-1/gc_NT18.xml">http://www.ebiz.enea.it/moda-ml/repository/codelist/v2018-1/gc_NT18.xml</a> (XPath ACSOrdChange/@msgfunction) [Optional] [Default= OR]
msgID	key identifier of the business document in the information system of the issuing Party. In case of more despatches of the same business document, it is unchanged. - base type: string, max length: 35, (XPath ACSOrdChange/TXheader/msgID) 0-1
msgN	identification number given to the message (xml document) by its issuer. In case of more despatches of the same business document, it changes. - base type: string, max length: 35, (XPath ACSOrdChange/TXheader/msgN) 1-1
netWeight	the net weight declared for transport or customs purpose - base type: decimal, min inclusive: 0, fraction digits: 2, (XPath ACSOrdChange/terms/transInfo/netWeight) 0-1
note	free text or structured (computer processing) note. For note structuring use the attributes "noteLabel" and "codelist" - base type: string, max length: 350, (XPath ACSOrdChange/terms/allowanceCharge/dtScheme/note) 0-99 (XPath ACSOrdChange/TXheader/note) 0-99 (XPath ACSOrdChange/acsComInfo/note) 0-99 (XPath ACSOrdChange/AXbody/AXitem/finInfo/note) 0-99 (XPath ACSOrdChange/AXbody/AXitem/dtScheme/note) 0-99 (XPath ACSOrdChange/AXbody/AXitem/note) 0-99 (XPath ACSOrdChange/AXbody/AXitem/acsComInfo/note) 0-99

<p>@noteLabel</p>	<p>subject qualifier of a note</p> <ul style="list-style-type: none"> <li>- base type: string, max length: 35, (XPath ACSOrdChange/AXbody/AXitem/note/@noteLabel) [Optional]</li> <li>- nota: <i>must be used to qualify the subject of the note</i> (XPath ACSOrdChange/acsComInfo/note/@noteLabel) [Optional]</li> <li>- nota: <i>must be used to qualify the subject of the note</i> (XPath ACSOrdChange/TXheader/note/@noteLabel) [Optional]</li> <li>- nota: <i>must be used to qualify the subject of the note</i> (XPath ACSOrdChange/AXbody/AXitem/finInfo/note/@noteLabel) [Optional]</li> <li>- nota: <i>must be used to qualify the subject of the note</i> (XPath ACSOrdChange/AXbody/AXitem/acsComInfo/note/@noteLabel) [Optional]</li> <li>- nota: <i>must be used to qualify the subject of the note</i> (XPath ACSOrdChange/terms/allowanceCharge/dtScheme/note/@noteLabel) [Optional]</li> <li>- nota: <i>must be used to qualify the subject of the note</i> (XPath ACSOrdChange/AXbody/AXitem/dtScheme/note/@noteLabel) [Optional]</li> <li>- nota: <i>must be used to qualify the subject of the note</i></li> </ul>
<p>@numberingOrg</p>	<p>code specifying the organisation who has created or owns the coding or numbering system</p> <ul style="list-style-type: none"> <li>- base type: string, cod. table: NT6 <a href="http://www.ebiz.enea.it/moda-ml/repository/codelist/v2018-1/gc_NT6.xml">http://www.ebiz.enea.it/moda-ml/repository/codelist/v2018-1/gc_NT6.xml</a> (XPath ACSOrdChange/AXbody/AXitem/acsComInfo/acsPack/acsPackCode/@numberingOrg) [Optional]</li> <li>- nota: <i>this attribute should be used either single or coupled with "listName" and "listVersion"</i> (XPath ACSOrdChange/AXbody/AXitem/thirdParty/id/@numberingOrg) [Optional] (XPath ACSOrdChange/AXbody/AXitem/dtScheme/note/@numberingOrg) [Optional]</li> <li>- nota: <i>must be used to specify the organization that created the list of codes used in "noteLabel"</i> (XPath ACSOrdChange/AXbody/AXitem/acsComInfo/season/@numberingOrg) [Optional] (a)</li> <li>- nota: <i>this attribute should be used either single or coupled with "listName" and "listVersion"</i> (XPath ACSOrdChange/AXbody/AXitem/csRange/sizeMatrix/sizeRow/itemsList/itemIdentification/serialN/@numberingOrg) [Optional]</li> <li>- nota: <i>here the issuer of the serial number must be specified (when different from the Supplier)</i> (XPath ACSOrdChange/AXbody/AXitem/dtScheme/legalRef/@numberingOrg) [Optional] (a)</li> <li>- nota: <i>this attribute should be used either single or coupled with "listName" and "listVersion"</i> (XPath ACSOrdChange/AXbody/AXitem/acsComInfo/operationalCode/@numberingOrg) [Optional] (a)</li> <li>- nota: <i>this attribute should be used either single or coupled with "listName" and "listVersion"</i> (XPath ACSOrdChange/AXbody/AXitem/csRange/sizeMatrix/sizeRow/size/@numberingOrg) [Optional] (a)</li> <li>- nota: <i>this attribute should be used either single or coupled with "listName" and "listVersion"</i> (XPath ACSOrdChange/AXbody/AXitem/acsComInfo/productLine/@numberingOrg) [Optional] (a)</li> <li>- nota: <i>this attribute should be used either single or coupled with "listName" and "listVersion"</i> (XPath ACSOrdChange/AXbody/AXitem/acsComInfo/note/@numberingOrg) [Optional]</li> <li>- nota: <i>must be used to specify the organization that created the list of codes used in "noteLabel"</i> (XPath ACSOrdChange/AXbody/AXitem/note/@numberingOrg) [Optional]</li> <li>- nota: <i>must be used to specify the organization that created the list of codes used in "noteLabel"</i> (XPath ACSOrdChange/AXbody/AXitem/finInfo/note/@numberingOrg) [Optional]</li> </ul>

- nota: *must be used to specify the organization that created the list of code s used in "noteLabel"*  
(XPath ACSOrdChange/AXbody/AXitem/acsComInfo/brand/@numberingOrg) [Optional] (a)

- nota: *this attribute should be used either single or coupled with "listName" and "listVersion"*  
(XPath ACSOrdChange/AXbody/AXitem/csRange/sizeMatrix/sizeRow/drop/@numberingOrg) [Optional] (a)

- nota: *this attribute should be used either single or coupled with "listName" and "listVersion"*  
(XPath ACSOrdChange/AXbody/AXitem/csRange/sizeMatrix/sizeRow/itemsList/qualityLevel/@numberingOrg) [Optional] (a)

- nota: *this attribute should be used either single or coupled with "listName" and "listVersion"*  
(XPath ACSOrdChange/TXheader/refDoc/attachment/fileName/@numberingOrg) [Optional] (a)

(XPath ACSOrdChange/AXbody/AXitem/refDoc/attachment/fileName/@numberingOrg) [Optional]

(XPath ACSOrdChange/AXbody/AXitem/refDoc/season/@numberingOrg) [Optional] (a)

- nota: *this attribute should be used either single or coupled with "listName" and "listVersion"*  
(XPath ACSOrdChange/AXbody/AXitem/refDoc/docID/@numberingOrg) [Optional]

- nota: *here can be specified whose document numbering is used (e.g.: Client, Supplier, ..)*  
(XPath ACSOrdChange/TXheader/thirdParty/id/@numberingOrg) [Optional]  
(XPath ACSOrdChange/TXheader/refDoc/docID/@numberingOrg) [Optional]

- nota: *here can be specified whose document numbering is used (e.g.: Client, Supplier, ..)*  
(XPath ACSOrdChange/AXbody/AXitem/acsCode/pattern/@numberingOrg) [Optional] (a)

- nota: *this attribute should be used either single or coupled with "listName" and "listVersion"*  
(XPath ACSOrdChange/AXbody/AXitem/acsCode/art/@numberingOrg) [Optional]

- nota: *this attribute should be used either single or coupled with "listName" and "listVersion"*  
(XPath ACSOrdChange/TXheader/refDoc/season/@numberingOrg) [Optional] (a)

- nota: *this attribute should be used either single or coupled with "listName" and "listVersion"*  
(XPath ACSOrdChange/AXbody/AXitem/acsCode/@numberingOrg) [Optional]  
(XPath ACSOrdChange/acsComInfo/note/@numberingOrg) [Optional]

- nota: *must be used to specify the organization that created the list of code s used in "noteLabel"*  
(XPath ACSOrdChange/terms/allowanceCharge/dtScheme/note/@numberingOrg) [Optional]

- nota: *must be used to specify the organization that created the list of code s used in "noteLabel"*  
(XPath ACSOrdChange/acsComInfo/season/@numberingOrg) [Optional] (a)

- nota: *this attribute should be used either single or coupled with "listName" and "listVersion"*  
(XPath ACSOrdChange/terms/allowanceCharge/dtScheme/legalRef/@numberingOrg) [Optional]

- nota: *this attribute should be used either single or coupled with "listName" and "listVersion"*  
(XPath ACSOrdChange/TXheader/buyer/additionalIdentifier/@numberingOrg) [Optional] (a)

- nota: *here the issuer of the identifier must be specified*  
(XPath ACSOrdChange/TXheader/buyer/id/@numberingOrg) [Optional]  
(XPath ACSOrdChange/acsComInfo/acsPack/acsPackCode/@numberingOrg) [Optional] (a)

- nota: *this attribute should be used either single or coupled with "listName" and "listVersion"*  
(XPath ACSOrdChange/TXheader/note/@numberingOrg) [Optional]

	<p>- nota: <i>must be used to specify the organization that created the list of code s used in "noteLabel"</i>  (XPath ACSOrdChange/acsComInfo/operationalCode/@numberingOrg) [Optional] (a)</p> <p>- nota: <i>this attribute should be used either single or coupled with "listName" and "listVersion"</i>  (XPath ACSOrdChange/acsComInfo/brand/@numberingOrg) [Optional] (a)</p> <p>- nota: <i>this attribute should be used either single or coupled with "listName" and "listVersion"</i>  (XPath ACSOrdChange/acsComInfo/productLine/@numberingOrg) [Optional] (a)</p> <p>- nota: <i>this attribute should be used either single or coupled with "listName" and "listVersion"</i>  (XPath ACSOrdChange/AXbody/AXitem/csRange/@numberingOrg) [Optional]  (XPath ACSOrdChange/TXheader/supplier/additionalIdentifier/@numberingOrg) [Optional] (a)</p> <p>- nota: <i>here the issuer of the identifier must be specified</i>  (XPath ACSOrdChange/AXbody/AXitem/csRange/drop/@numberingOrg) [Optional] (a)</p> <p>- nota: <i>this attribute should be used either single or coupled with "listName" and "listVersion"</i>  (XPath ACSOrdChange/AXbody/AXitem/csRange/garmentVariant/variantCode/@numberingOrg) [Optional]</p> <p>- nota: <i>this attribute should be used either single or coupled with "listName" and "listVersion"</i>  (XPath ACSOrdChange/AXbody/AXitem/csRange/color/@numberingOrg) [Optional]</p> <p>- nota: <i>this attribute should be used either single or coupled with "listName" and "listVersion"</i>  (XPath ACSOrdChange/TXheader/docID/@numberingOrg) [Optional]</p> <p>- nota: <i>here can be specified whose document numbering is used (e.g.: Client, Supplier, ..)</i>  (XPath ACSOrdChange/AXbody/AXitem/acsCode/color/@numberingOrg) [Optional]</p> <p>- nota: <i>this attribute should be used either single or coupled with "listName" and "listVersion"</i>  (XPath ACSOrdChange/AXbody/AXitem/csRange/garmentVariant/variantType/@numberingOrg) [Optional]</p> <p>- nota: <i>this attribute should be used either single or coupled with "listName" and "listVersion"</i>  (XPath ACSOrdChange/TXheader/supplier/id/@numberingOrg) [Optional]  (XPath ACSOrdChange/AXbody/AXitem/acsCode/added/@numberingOrg) [Optional]</p> <p>- nota: <i>this attribute should be used either single or coupled with "listName" and "listVersion"</i>  (XPath ACSOrdChange/AXbody/AXitem/csRange/sizeMatrix/sizeRow/additionalComponentCode/@numberingOrg) [Optional] (a)</p> <p>- nota: <i>this attribute should be used either single or coupled with "listName" and "listVersion"</i></p>
operationalCode	<p>operational code: it is the code of a project, an event, an initiative, a sales channel, a management type (eg CITES), ... the document, or product, is connected with.</p> <p>- base type: string,  (XPath ACSOrdChange/AXbody/AXitem/acsComInfo/operationalCode) 0-19 (N)  (XPath ACSOrdChange/acsComInfo/operationalCode) 0-19 (N)</p>
otherCurrency	<p>other currency used in the document</p> <p>- base type: string, cod. table: T9  <a href="http://www.ebiz.enea.it/moda-ml/repository/codelist/v2018-1/gc_T9.xml">http://www.ebiz.enea.it/moda-ml/repository/codelist/v2018-1/gc_T9.xml</a>  (XPath ACSOrdChange/TXheader/otherCurrency) 0-9 (A)</p>
@part	<p>percent fraction of a total payment</p> <p>- base type: decimal, min inclusive: 1, max inclusive: 99, fraction digits: 2,  (XPath ACSOrdChange/terms/insPayment/@part) [Required]</p> <p>- nota: <i>here the % value of each installment must be indicated</i></p>

pattern	<p>pattern/design number of the product, when not included in the article code</p> <p>- base type: string, max length: 15, (XPath ACSOrdChange/AXbody/AXitem/acsCode/pattern) 0-1</p>
payMode	<p>way or means of payment</p> <p>- base type: string, cod. table: T2 <a href="http://www.ebiz.enea.it/moda-ml/repository/codelist/v2018-1/gc_T2.xml">http://www.ebiz.enea.it/moda-ml/repository/codelist/v2018-1/gc_T2.xml</a> (XPath ACSOrdChange/terms/payment/payMode) 0-1 (XPath ACSOrdChange/terms/insPayment/payMode) 0-1</p>
payTerm	<p>code specifying the terms or time by which the payment must be done</p> <p>- base type: string, cod. table: T1 <a href="http://www.ebiz.enea.it/moda-ml/repository/codelist/v2018-1/gc_T1.xml">http://www.ebiz.enea.it/moda-ml/repository/codelist/v2018-1/gc_T1.xml</a> (XPath ACSOrdChange/terms/payment/payTerm) 1-1 (XPath ACSOrdChange/terms/insPayment/payTerm) 1-1</p>
payTermText	<p>free text specifying the terms by which the payment must be done (time/mode or means)</p> <p>- base type: string, max length: 250, (XPath ACSOrdChange/terms/insPayment/payTermText) 1-1 (U) (XPath ACSOrdChange/terms/payment/payTermText) 1-1 (U)</p>
person	<p>name of the contact person within a Party</p> <p>- base type: string, max length: 40, (XPath ACSOrdChange/TXheader/supplier/person) 0-1 (XPath ACSOrdChange/TXheader/thirdParty/person) 0-1 (XPath ACSOrdChange/AXbody/AXitem/thirdParty/person) 0-1 (XPath ACSOrdChange/TXheader/buyer/person) 0-1 (XPath ACSOrdChange/AXbody/AXitem/finInfo/bank/person) 0-1</p>
@phone	<p>phone number of the contact person within a Party</p> <p>- base type: string, max length: 35, (XPath ACSOrdChange/TXheader/buyer/person/@phone) [Optional] (XPath ACSOrdChange/TXheader/supplier/person/@phone) [Optional] (XPath ACSOrdChange/AXbody/AXitem/finInfo/bank/person/@phone) [Optional] (XPath ACSOrdChange/AXbody/AXitem/thirdParty/person/@phone) [Optional] (XPath ACSOrdChange/TXheader/thirdParty/person/@phone) [Optional]</p>
postCode	<p>code defining the postal zone</p> <p>- base type: string, max length: 10, (XPath ACSOrdChange/TXheader/buyer/postCode) 0-1 (XPath ACSOrdChange/AXbody/AXitem/finInfo/bank/postCode) 0-1 (XPath ACSOrdChange/TXheader/thirdParty/postCode) 0-1 (XPath ACSOrdChange/TXheader/supplier/postCode) 0-1 (XPath ACSOrdChange/AXbody/AXitem/thirdParty/postCode) 0-1</p>
price	<p>unit price of the article, object or service specified</p> <p>- base type: decimal, min inclusive: 0, fraction digits: 4, (XPath ACSOrdChange/AXbody/AXitem/price) 0-1 (AU)</p>
@priceQualifier	<p>type of price with reference to discount and taxes</p> <p>- base type: string, cod. table: NT20 <a href="http://www.ebiz.enea.it/moda-ml/repository/codelist/v2018-1/gc_NT20.xml">http://www.ebiz.enea.it/moda-ml/repository/codelist/v2018-1/gc_NT20.xml</a> (XPath ACSOrdChange/AXbody/AXitem/price/@priceQualifier) [Optional] [Default=NET]</p>
productLine	<p>the product line name of a fashion product.</p> <p>- base type: string, (XPath ACSOrdChange/acsComInfo/productLine) 0-1 (N) (XPath ACSOrdChange/AXbody/AXitem/acsComInfo/productLine) 0-1 (N)</p>
@progr	<p>progressive number in the sequence</p> <p>- base type: positiveInteger, min inclusive: 1, (XPath ACSOrdChange/terms/transInfo/@progr) [Optional] (N) - nota: <i>Indicates the position of the leg in a sequence of transport legs. If it is declared it must be in all the transInfo elements.</i></p>



project	code used to assign the items ordered (fabric pieces, accessories, garments ...) to a specific project of the Client - base type: string, max length: 40, (XPath ACSOrdChange/acsComInfo/project) 0-1 (U) (XPath ACSOrdChange/AXbody/AXitem/acsComInfo/project) 0-1 (U)
qty	net quantity of the article or object correlated, qualified by the function of the document (ordering, delivering, ..) and by the context - base type: decimal, min inclusive: 0, fraction digits: 2, (XPath ACSOrdChange/AXbody/AXitem/qty) 0-2 <hr/> <b>AAAA-WARNING! - text not AVAILABLE n. 245 - In=en</b> (XPath ACSOrdChange/AXbody/AXitem/csRange/sizeMatrix/sizeRow/qty) 0-1
qualityLevel	the product quality level (first choice, second choice,...). - base type: string, (XPath ACSOrdChange/AXbody/AXitem/csRange/sizeMatrix/sizeRow/itemsList/qualityLevel) 0-1 (N)
@role	Third Party role qualifier - base type: string, cod. table: NT2 <a href="http://www.ebiz.enea.it/moda-ml/repository/codelist/v2018-1/gc_NT2.xml">http://www.ebiz.enea.it/moda-ml/repository/codelist/v2018-1/gc_NT2.xml</a> (XPath ACSOrdChange/AXbody/AXitem/thirdParty/@role) [Required] (XPath ACSOrdChange/TXheader/thirdParty/@role) [Required]
season	sale season; defined as: season (1 crt) + year (4 crt) - season: S/S=1 A/W=2 Spring=3 Summer=4 Autumn=5 Winter=6: for more than four seasons use alphabetic sequence: 1st season=A 2nd season=B etc.etc. - base type: string, max length: 15, (XPath ACSOrdChange/AXbody/AXitem/acsComInfo/season) 0-1 (A) (XPath ACSOrdChange/acsComInfo/season) 0-1 (A) (XPath ACSOrdChange/TXheader/refDoc/season) 0-1 (A) - note: here indicates the season to which the referenced document belongs (XPath ACSOrdChange/AXbody/AXitem/refDoc/season) 0-1 (A) - note: here indicates the season to which the referenced document belongs
@sender	qualifier that specifies the Party issuing of the document - base type: boolean, (XPath ACSOrdChange/AXbody/AXitem/thirdParty/@sender) [Optional] (a*) - nota: This attribute is mandatory when the STYLESHEET must be used (XPath ACSOrdChange/TXheader/thirdParty/@sender) [Optional] (a*) - nota: This attribute is mandatory when the STYLESHEET must be used (XPath ACSOrdChange/TXheader/buyer/@sender) [Optional] (a*) - nota: This attribute is mandatory when the STYLESHEET must be used (XPath ACSOrdChange/TXheader/supplier/@sender) [Optional] (a*) - nota: This attribute is mandatory when the STYLESHEET must be used
serialN	serial number used for the identification of a physical unit - base type: string, max length: 250, (XPath ACSOrdChange/AXbody/AXitem/csRange/sizeMatrix/sizeRow/itemsList/itemIdentification/serialN) 1-9 (AU) <hr/> <b>AAAA-WARNING! - text not AVAILABLE n. 245 - In=en</b> - note: multiple values of serialN are allowed for different representations of the serial identifier of the same product unit. Instances of serialN must differ at least for one value of numberingOrg and idQualifier.
size	size number of a fashion product (knitwear, clothing, ..) - base type: string, max length: 15, (XPath ACSOrdChange/AXbody/AXitem/csRange/sizeMatrix/sizeRow/size) 1-1 (A)
@sizeSystemBase	base of the size system - base type: string, cod. table: T423 <a href="http://www.ebiz.enea.it/moda-ml/repository/codelist/v2018-1/gc_T423.xml">http://www.ebiz.enea.it/moda-ml/repository/codelist/v2018-1/gc_T423.xml</a> (XPath ACSOrdChange/AXbody/AXitem/csRange/@sizeSystemBase) [Optional]

@sizeSystemID	the identifier of the size system. - base type: string, (XPath ACSOrdChange/AXbody/AXitem/csRange/@sizeSystemID) [Optional]
@sizeSystemNat	nation or agency identifying the size system - base type: string, cod. table: T421 <a href="http://www.ebiz.enea.it/moda-ml/repository/codelist/v2018-1/gc_T421.xml">http://www.ebiz.enea.it/moda-ml/repository/codelist/v2018-1/gc_T421.xml</a> (XPath ACSOrdChange/AXbody/AXitem/csRange/@sizeSystemNat) [Optional]
@sizeSystemSeg	market segment identifying the size system - base type: string, cod. table: T422 <a href="http://www.ebiz.enea.it/moda-ml/repository/codelist/v2018-1/gc_T422.xml">http://www.ebiz.enea.it/moda-ml/repository/codelist/v2018-1/gc_T422.xml</a> (XPath ACSOrdChange/AXbody/AXitem/csRange/@sizeSystemSeg) [Optional]
specDate	date by which the referenced blanket order must receive full product specific ations (e.g.: colour), according to one of the patterns YYYY-MM-DD, YYYY- MM-DD:HH-MM or YYYY-WW. - base type: string, (XPath ACSOrdChange/acsComInfo/specDate) 0-1 (XPath ACSOrdChange/AXbody/AXitem/acsComInfo/specDate) 0-1
street	street and building number identifying a location - base type: string, max length: 80, (XPath ACSOrdChange/AXbody/AXitem/finInfo/bank/street) 0-1 (XPath ACSOrdChange/TXheader/thirdParty/street) 0-1 (XPath ACSOrdChange/AXbody/AXitem/thirdParty/street) 0-1 (XPath ACSOrdChange/TXheader/supplier/street) 0-1 (XPath ACSOrdChange/TXheader/buyer/street) 0-1
subCountry	short name or code of the sub-country entity - base type: string, max length: 9, (XPath ACSOrdChange/AXbody/AXitem/thirdParty/subCountry) 0-1 (XPath ACSOrdChange/TXheader/buyer/subCountry) 0-1 (XPath ACSOrdChange/TXheader/thirdParty/subCountry) 0-1 (XPath ACSOrdChange/TXheader/supplier/subCountry) 0-1 (XPath ACSOrdChange/AXbody/AXitem/finInfo/bank/subCountry) 0-1
subDept	name or code of a contact department within a Party - base type: string, max length: 40, (XPath ACSOrdChange/TXheader/supplier/subDept) 0-1 (N) (XPath ACSOrdChange/TXheader/thirdParty/subDept) 0-1 (N) (XPath ACSOrdChange/AXbody/AXitem/thirdParty/subDept) 0-1 (N) (XPath ACSOrdChange/TXheader/buyer/subDept) 0-1 (N) (XPath ACSOrdChange/AXbody/AXitem/finInfo/bank/subDept) 0-1 (N)
swift	swift code relevant to the financial transaction - base type: string, max length: 15, (XPath ACSOrdChange/AXbody/AXitem/finInfo/swift) 0-1
taxCategory	duty or tax or fee category - base type: string, cod. table: T62 <a href="http://www.ebiz.enea.it/moda-ml/repository/codelist/v2018-1/gc_T62.xml">http://www.ebiz.enea.it/moda-ml/repository/codelist/v2018-1/gc_T62.xml</a> (XPath ACSOrdChange/terms/allowanceCharge/dtScheme/taxCategory) 0-1 (XPath ACSOrdChange/AXbody/AXitem/dtScheme/taxCategory) 0-1
taxRate	duty or tax or fee percent rate - base type: string, (XPath ACSOrdChange/AXbody/AXitem/dtScheme/taxRate) 0-1 (XPath ACSOrdChange/terms/allowanceCharge/dtScheme/taxRate) 0-1
@taxType	duty or tax or fee type - base type: string, cod. table: T61 <a href="http://www.ebiz.enea.it/moda-ml/repository/codelist/v2018-1/gc_T61.xml">http://www.ebiz.enea.it/moda-ml/repository/codelist/v2018-1/gc_T61.xml</a> (XPath ACSOrdChange/AXbody/AXitem/dtScheme/@taxType) [Required] (XPath ACSOrdChange/terms/allowanceCharge/dtScheme/@taxType) [Required]
totQty	total quantity of the articles related to the whole document - base type: decimal, min inclusive: 0, fraction digits: 2,

	(XPath ACSOrdChange/totals/totQty) 0-1
@TOtype	type of Order - base type: string, cod. table: NT1 <a href="http://www.ebiz.enea.it/moda-ml/repository/codelist/v2018-1/gc_NT1.xml">http://www.ebiz.enea.it/moda-ml/repository/codelist/v2018-1/gc_NT1.xml</a> (XPath ACSOrdChange/@TOtype) [Optional]
transCondition	special condition of transport or special service requested to the Forwarder - base type: string, cod. table: T38 <a href="http://www.ebiz.enea.it/moda-ml/repository/codelist/v2018-1/gc_T38.xml">http://www.ebiz.enea.it/moda-ml/repository/codelist/v2018-1/gc_T38.xml</a> (XPath ACSOrdChange/terms/transInfo/transCondition) 0-3
transConditionText	free text description of the special condition of transport or special service requested to the Forwarder - base type: string, max length: 250, (XPath ACSOrdChange/terms/transInfo/transConditionText) 0-1 (U)
transMeans	means of transport, in general or referred to a specific leg - base type: string, cod. table: T40 <a href="http://www.ebiz.enea.it/moda-ml/repository/codelist/v2018-1/gc_T40.xml">http://www.ebiz.enea.it/moda-ml/repository/codelist/v2018-1/gc_T40.xml</a> (XPath ACSOrdChange/terms/transInfo/transMeans) 0-1
transMode	way of transport, in general or referred to the specified leg - base type: string, cod. table: T8 <a href="http://www.ebiz.enea.it/moda-ml/repository/codelist/v2018-1/gc_T8.xml">http://www.ebiz.enea.it/moda-ml/repository/codelist/v2018-1/gc_T8.xml</a> (XPath ACSOrdChange/terms/transInfo/transMode) 1-1
@transReason	reason for the transport - base type: string, cod. table: NT11 <a href="http://www.ebiz.enea.it/moda-ml/repository/codelist/v2018-1/gc_NT11.xml">http://www.ebiz.enea.it/moda-ml/repository/codelist/v2018-1/gc_NT11.xml</a> (XPath ACSOrdChange/terms/transInfo/@transReason) [Optional]
@uid	unique element identifier within the xml document - base type: string, (XPath ACSOrdChange/TXheader/refDoc/attachment/@uid) [Optional] (XPath ACSOrdChange/AXbody/AXitem/refDoc/attachment/@uid) [Optional]
@um	specification of the unit of measure - base type: string, cod. table: NT7 <a href="http://www.ebiz.enea.it/moda-ml/repository/codelist/v2018-1/gc_NT7.xml">http://www.ebiz.enea.it/moda-ml/repository/codelist/v2018-1/gc_NT7.xml</a> (XPath ACSOrdChange/AXbody/AXitem/qty/@um) [Required] (XPath ACSOrdChange/terms/transInfo/grossWeight/@um) [Required] (XPath ACSOrdChange/AXbody/AXitem/price/@um) [Optional] - nota: <i>Unit of measure of the product to which the price is referred (price per meter)</i> (XPath ACSOrdChange/AXbody/AXitem/csRange/sizeMatrix/sizeRow/qty/@um) [Required] (XPath ACSOrdChange/terms/transInfo/netWeight/@um) [Required] (XPath ACSOrdChange/terms/allowanceCharge/@um) [Optional] (a) (XPath ACSOrdChange/totals/totQty/@um) [Required]
uri	Uniform Resource Identifier (URI) that identifies the external object as an Internet resource - base type: normalizedString, (XPath ACSOrdChange/AXbody/AXitem/refDoc/attachment/externalReference/uri) 1-1 (N) (XPath ACSOrdChange/TXheader/refDoc/attachment/externalReference/uri) 1-1 (N)
@useProfile	use profile to which the present document is compliant if it was agreed by the parties. It is suggested a URI with reference to the firm or the URL of the profile. - base type: string, (XPath ACSOrdChange/@useProfile) [Optional]
validityEnd	date by which the validity ends, according to one of the patterns YYYY-MM-DD, YYYY-MM-DD:HH-MM or YYYY-WW. - base type: string,



	(XPath ACSOrdChange/TXheader/validityEnd) 0-1
variantCode	Code of variant used for fashion product. - base type: string, (XPath ACSOrdChange/AXbody/AXitem/csRange/garmentVariant/variantCode) 1-1 (N)
variantType	Type of variant used for fashion product (examples: 'treatment', 'washing type', 'size class',...) - base type: string, (XPath ACSOrdChange/AXbody/AXitem/csRange/garmentVariant/variantType) 1-1 (N)
@VAT	VAT rate or code (DEPRECATED, use dtScheme element) - base type: string, cod. table: NT16 <a href="http://www.ebiz.enea.it/moda-ml/repository/codelist/v2018-1/gc_NT16.xml">http://www.ebiz.enea.it/moda-ml/repository/codelist/v2018-1/gc_NT16.xml</a> (XPath ACSOrdChange/terms/allowanceCharge/@VAT) [Optional] (XPath ACSOrdChange/AXbody/AXitem/thirdParty/@VAT) [Optional] (XPath ACSOrdChange/TXheader/thirdParty/@VAT) [Optional] (XPath ACSOrdChange/AXbody/AXitem/lineN/@VAT) [Optional] - nota: <i>Deprecated, prefer dtScheme when available.</i>
@version	Dictionary version from which the instance has been created - base type: string, cod. table: NT100 <a href="http://www.ebiz.enea.it/moda-ml/repository/codelist/v2018-1/gc_NT100.xml">http://www.ebiz.enea.it/moda-ml/repository/codelist/v2018-1/gc_NT100.xml</a> (XPath ACSOrdChange/@version) [Optional] [Default= 2018-1]

## 2.3 Suggested best practices

**ACSOrdChange/TXheader/refDoc/docID (identification number of the referenced document SINCE 2008-1 ITS USE IN THE HEADER IS DISCOURAGED (REPLACED BY msgID))**

numberingOrg indicates the role that produced the document identifier (it is allowed to declare two different ones -e.g. customer and supplier - with two docID with different numberingOrg

**ACSOrdChange/AXbody/AXitem/refDoc/docID (identification number of the referenced document SINCE 2008-1 ITS USE IN THE HEADER IS DISCOURAGED (REPLACED BY msgID))**

numberingOrg indicates the role that produced the document identifier (it is allowed to declare two different ones -e.g. customer and supplier - with two docID with different numberingOrg

**ACSOrdChange/TXheader/refDoc/attachment/**

**externalReference/mimeType (mime type of the external object)**

Use coding from IANA <http://www.iana.org/assignments/media-types/media-types.xml>

**ACSOrdChange/AXbody/AXitem/refDoc/attachment/**

**externalReference/mimeType (mime type of the external object)**

Use coding from IANA <http://www.iana.org/assignments/media-types/media-types.xml>

**ACSOrdChange/AXbody/AXitem/qty (net quantity of the article or object correlated, qualified by the function of the document (ordering, delivering, ..) and by the context)**

this element can have two instances only if the units of measure are different

**ACSOrdChange/AXbody/AXitem/csRange/sizeMatrix/**

**sizeRow/itemsList/itemIdentification/serialN (serial number used for the identification of a physical unit)**

in the case of garment with RFID for anti-counterfeiting, RFID EPCGlobal for logistics and NFC for the customer experience there should be three serial elements with pairs of attributes numberingOrg/idQualifier: "CL"/"RFID", "GS1"/"RFID", "CL"/"NFC".

## 2.4 Enumeration tables

List of enumeration tables used in the XML document. You can find the corresponding codes at:  
<http://www.ebiz-tcf.eu/moda-ml/imple/moda-ml-2018-1.asp?lingua=en&pag=6>

### Legenda

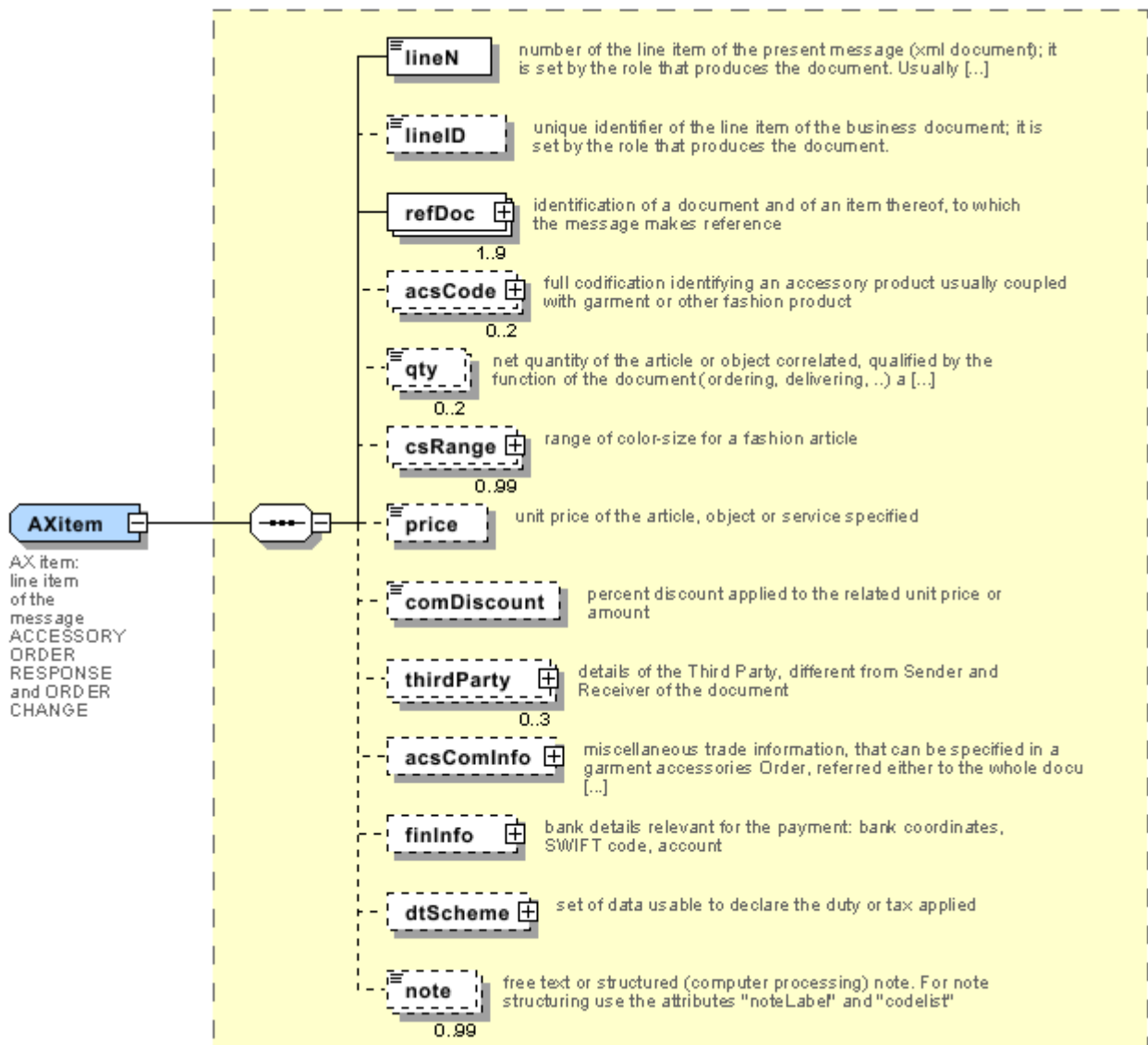
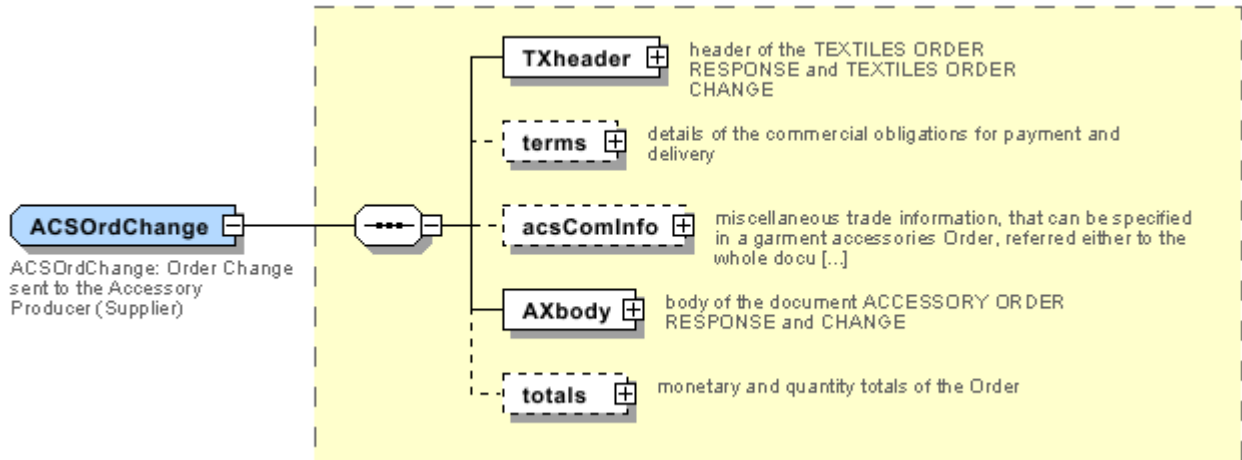
- N: new table
- U: updated properties

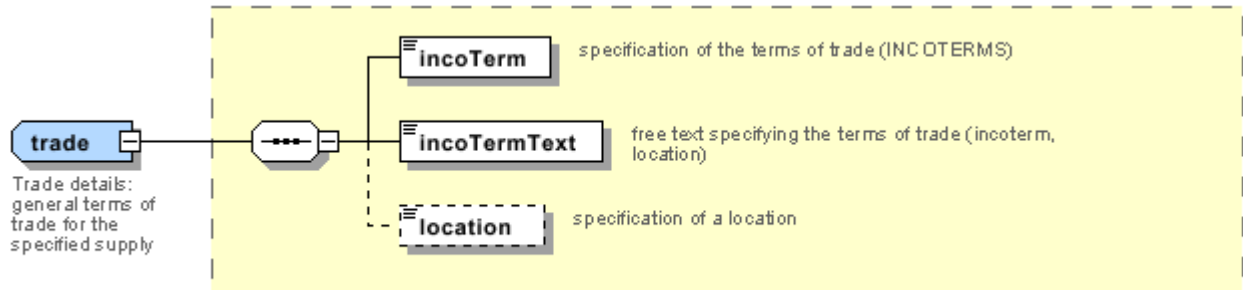
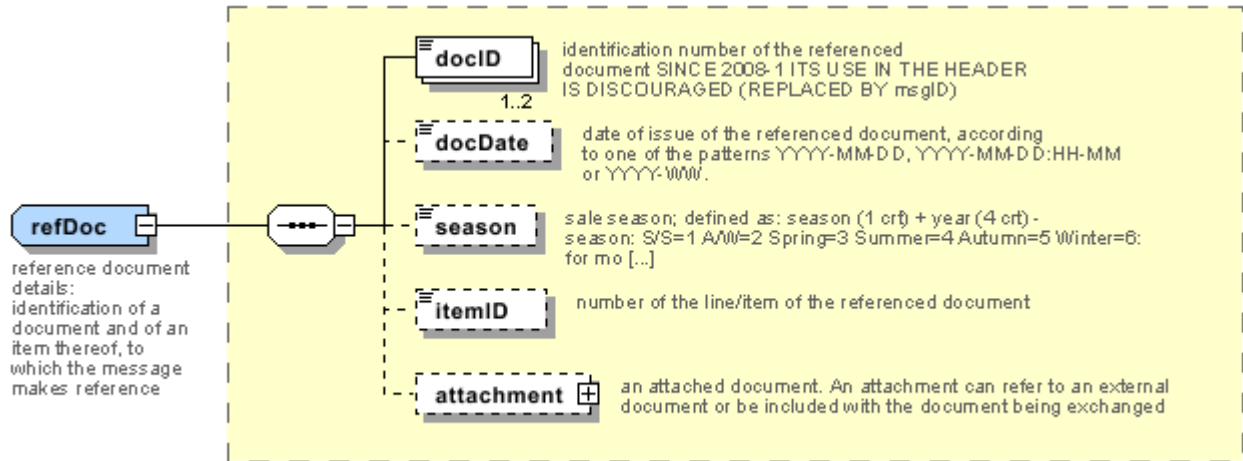
NT1 - Order type  
NT100 - eBIZ TCFUpstream version  
NT11 - transport causal  
NT16 - VAT rate or code  
NT18 - message function  
NT19 - currency use qualifier  
NT2 - third party qualifier  
NT20 - price qualifier  
NT29 - format of a date  
NT3 - data format  
NT4 - end use  
NT43 - operational code qualifier (N)  
NT5 - action code  
NT6 - coding system owner/issuer  
NT60 - language, codes from ISO 639-1 (subset) (N)  
NT7 - unit of measure (U)  
T1 - terms of payment  
T10 - ISO3166 - Country  
T2 - Modes of payment  
T21 - type of document  
T3 - terms of delivery  
T38 - transport conditions  
T40 - type of transport means  
T41 - type of Allowance or Charge  
T421 - size system: nationality  
T422 - size system: market segment  
T423 - size system: base  
T44 - additional code type  
T61 - duty or tax or fee type  
T62 - duty or tax or fee category  
T8 - Modes of Transport  
T9 - ISO4217 - Currency



# Annex A

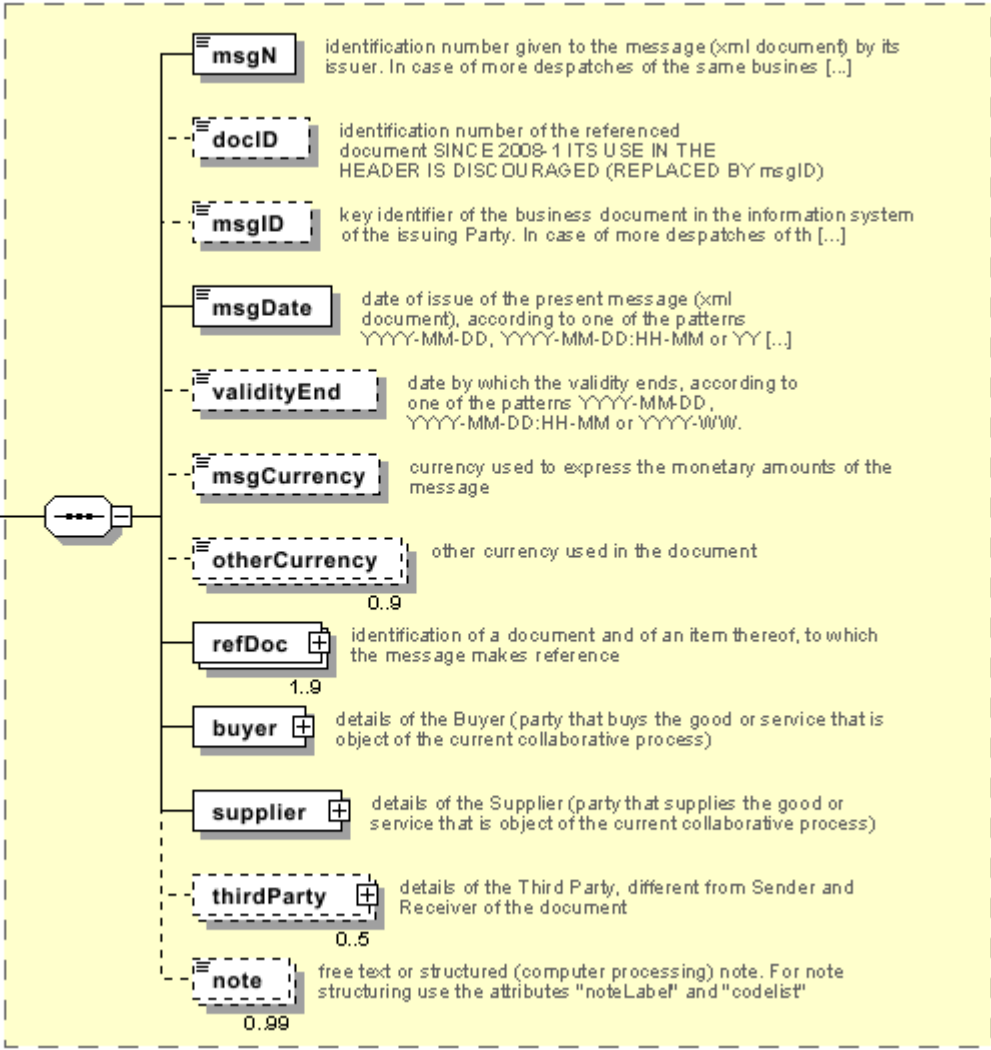
Representative images of the principal complex elements' structure.





**TXheader**

TX header:  
header of  
the  
TEXTILES  
ORDER  
RESPONSE  
and  
TEXTILES  
ORDER  
CHANGE







## Annex B

### NT1 - Order type

type of Order

Agency name: eBIZ

tabella cod.: NT1

File codes list (Generic code): [http://www.ebiz.enea.it/moda-ml/repository/codelist/v2018-1/gc\\_NT1.xml](http://www.ebiz.enea.it/moda-ml/repository/codelist/v2018-1/gc_NT1.xml)

Code	Description	Adoption note	Version status	Date of insertion
A	blanket	the order is open without a concrete delivery of product; it establishes an amount of goods to be produced in a future	(U)	
D	call-off	orders an amount of goods to be delivered (and invoiced and produced if necessary); it is important that it is clear that this amount should be subtracted from the amount of the blanket order referred in the refDoc element	(U)	
P	reservation			
STD	standard			

### NT100 - eBIZ TCFUpstream version

dictionary version

Agency name: eBIZ

tabella cod.: NT100

File codes list (Generic code): [http://www.ebiz.enea.it/moda-ml/repository/codelist/v2018-1/gc\\_NT100.xml](http://www.ebiz.enea.it/moda-ml/repository/codelist/v2018-1/gc_NT100.xml)

Code	Description	Adoption note	Version status	Date of insertion
2013-1	v2013-1			01/07/2013
2018-1	v2018-1		(N)	04/11/2018
draft	draft		(N)	08/09/2017

### NT11 - transport causal

reason for the transport

Agency name: eBIZ

tabella cod.: NT11

File codes list (Generic code): [http://www.ebiz.enea.it/moda-ml/repository/codelist/v2018-1/gc\\_NT11.xml](http://www.ebiz.enea.it/moda-ml/repository/codelist/v2018-1/gc_NT11.xml)

Code	Description	Adoption note	Version status	Date of insertion
FOC	free of charge			
FRW	return from re-works			
FST	return from storage			
FVW	return from view			
FWK	return from works			
IST	in storage			
NWK	return non-worked			
RJC	return from rejection			
SEL	to sell			
STO	to storage			
VEW	to view			
WRK	to works			

#### NT16 - VAT rate or code

VAT rate or code ( DEPRECATED, use dtScheme element )

tabella cod.: NT16

File codes list (Generic code): [http://www.ebiz.enea.it/moda-ml/repository/codelist/v2018-1/gc\\_NT16.xml](http://www.ebiz.enea.it/moda-ml/repository/codelist/v2018-1/gc_NT16.xml)

#### NT18 - message function

function performed by the present message with regards to the transmission

Agency name: eBIZ

tabella cod.: NT18

File codes list (Generic code): [http://www.ebiz.enea.it/moda-ml/repository/codelist/v2018-1/gc\\_NT18.xml](http://www.ebiz.enea.it/moda-ml/repository/codelist/v2018-1/gc_NT18.xml)

Code	Description	Adoption note	Version status	Date of insertion
CA	delete this document			01/07/2013
CP	copy			
OR	original			
RC	re-transmission for data correction			
RT	re-transmission			

## NT19 - currency use qualifier

qualification of another currency used in the document

Agency name: eBIZ

tabella cod.: NT19

File codes list (Generic code): [http://www.ebiz.enea.it/moda-ml/repository/codelist/v2018-1/gc\\_NT19.xml](http://www.ebiz.enea.it/moda-ml/repository/codelist/v2018-1/gc_NT19.xml)

Code	Description	Adoption note	Version status	Date of insertion
CAT	pricelist currency			
INV	invoicing currency			
ORD	order currency			
PAY	payment currency			
SAL	sales currency			

## NT2 - third party qualifier

Third Party role qualifier

Agency name: eBIZ

tabella cod.: NT2

File codes list (Generic code): [http://www.ebiz.enea.it/moda-ml/repository/codelist/v2018-1/gc\\_NT2.xml](http://www.ebiz.enea.it/moda-ml/repository/codelist/v2018-1/gc_NT2.xml)

Code	Description	Adoption note	Version status	Date of insertion
AG	Sales Agent			
AU	Auditor		(N)	08/04/2019
CE	Certification authority		(N)	08/04/2019
CO	Quality Controller			
DC	Response to			
DF	Invoicee			
DI	Copy to (CC)			28/10/2014
DM	Consignee			
DP	Consignment address (Delivery Party)			
IM	Importer			
OR	Originator			10/09/2014
SC	Sub contractor		(N)	10/04/2019
SM	Service/ePlatform manager		(N)	08/04/2019

SP	Forwarder			
TX	Tax Representative			

### NT20 - price qualifier

type of price with reference to discount and taxes

Agency name: eBIZ

tabella cod.: NT20

File codes list (Generic code): [http://www.ebiz.enea.it/moda-ml/repository/codelist/v2018-1/gc\\_NT20.xml](http://www.ebiz.enea.it/moda-ml/repository/codelist/v2018-1/gc_NT20.xml)

Code	Description	Adoption note	Version status	Date of insertion
GET	gross excluding taxes			
GIT	gross including taxes			
NET	net excluding taxes			
NIT	net including taxes			

### NT29 - format of a date

format used for the date

Agency name: eBIZ

tabella cod.: NT29

File codes list (Generic code): [http://www.ebiz.enea.it/moda-ml/repository/codelist/v2018-1/gc\\_NT29.xml](http://www.ebiz.enea.it/moda-ml/repository/codelist/v2018-1/gc_NT29.xml)

Code	Description	Adoption note	Version status	Date of insertion
D	YYYY-MM-DD			
M	YYYY-MM-DD:HH-MM			
W	YYYY-WW			

### NT3 - data format

format of a string according to a customized User rule (local rule)

Agency name: eBIZ

tabella cod.: NT3

File codes list (Generic code): [http://www.ebiz.enea.it/moda-ml/repository/codelist/v2018-1/gc\\_NT3.xml](http://www.ebiz.enea.it/moda-ml/repository/codelist/v2018-1/gc_NT3.xml)

Code	Description	Adoption note	Version status	Date of insertion
------	-------------	---------------	----------------	-------------------

EN4	GS1-GLN			01/07/2013
MD	mutually agreed			

#### NT4 - end use

specifies the final use of the product

Agency name: eBIZ

tabella cod.: NT4

File codes list (Generic code): [http://www.ebiz.enea.it/moda-ml/repository/codelist/v2018-1/gc\\_NT4.xml](http://www.ebiz.enea.it/moda-ml/repository/codelist/v2018-1/gc_NT4.xml)

Code	Description	Adoption note	Version status	Date of insertion
PC	test piece			
PR	production			
SA	Sample		(N)	10/09/2014
SC	samples card			
TI	patch			
TP	(test cut)			

#### NT43 - operational code qualifier (N)

Agency name: eBIZ

tabella cod.: NT43

File codes list (Generic code): [http://www.ebiz.enea.it/moda-ml/repository/codelist/v2018-1/gc\\_NT43.xml](http://www.ebiz.enea.it/moda-ml/repository/codelist/v2018-1/gc_NT43.xml)

Code	Description	Adoption note	Version status	Date of insertion
1	event		(N)	08/09/2017
2	sales channel		(N)	08/09/2017
3	goods management type		(N)	08/09/2017
4	special initiative		(N)	08/09/2017

#### NT5 - action code

action performed by the present line upon the referenced document line

Agency name: eBIZ

tabella cod.: NT5

File codes list (Generic code): [http://www.ebiz.enea.it/moda-ml/repository/codelist/v2018-1/gc\\_NT5.xml](http://www.ebiz.enea.it/moda-ml/repository/codelist/v2018-1/gc_NT5.xml)

Code	Description	Adoption note	Version status	Date of insertion
A	CANCELLED			
C	CONFIRMED			
N	NEW ORDER LINE (created by an order change)			
R	PROVISIONAL CONFIRMATION			
S	DEFINITIVE CONFIRMATION			
SA	suspension accepted			
SN	suspension not accepted			
SR	suspension request			
V	AMENDED			

#### NT6 - coding system owner/issuer

code specifying the organisation who has created or owns the coding or numbering system

Agency name: eBIZ

tabella cod.: NT6

File codes list (Generic code): [http://www.ebiz.enea.it/moda-ml/repository/codelist/v2018-1/gc\\_NT6.xml](http://www.ebiz.enea.it/moda-ml/repository/codelist/v2018-1/gc_NT6.xml)

Code	Description	Adoption note	Version status	Date of insertion
CL	Customer/buyer			
CO	Quality Controller			
EB	eBIZ	replaces 'ML'	(N)	18/03/2019
EN	GS1 ( ex-EAN International )			
ES	e-Stockflow			
FO	Supplier			
GS	GS1			01/07/2013
MF	VAT identifier		(U)	
ML	Moda-ML	DEPRECATED	(U)	
SP	Service Provider			

#### NT60 - language, codes from ISO 639-1 (subset) (N)

Agency name: eBIZ / ISO

tabella cod.: NT60

File codes list (Generic code): [http://www.ebiz.enea.it/moda-ml/repository/codelist/v2018-1/gc\\_NT60.xml](http://www.ebiz.enea.it/moda-ml/repository/codelist/v2018-1/gc_NT60.xml)

Code	Description	Adoption note	Version status	Date of insertion
af	Afrikaans		(N)	31/01/2019
ar	Arabic		(N)	31/01/2019
be	Belarusian		(N)	31/01/2019
bg	Bulgarian		(N)	31/01/2019
bn	Bengali		(N)	31/01/2019
bo	Tibetan		(N)	31/01/2019
bs	Bosnian		(N)	31/01/2019
ca	Catalan, Valencian		(N)	31/01/2019
cs	Czech		(N)	31/01/2019
da	Danish		(N)	31/01/2019
de	German		(N)	31/01/2019
el	Greek, Modern (1453-)		(N)	31/01/2019
en	English		(N)	31/01/2019
eo	Esperanto		(N)	31/01/2019
es	Spanish, Castilian		(N)	31/01/2019
et	Estonian		(N)	31/01/2019
eu	Basque		(N)	31/01/2019
F	Female		(N)	15/04/2019
fa	Persian		(N)	31/01/2019
fi	Finnish		(N)	31/01/2019
fr	French		(N)	31/01/2019
ga	Irish		(N)	31/01/2019
gd	Gaelic, Scottish Gaelic		(N)	31/01/2019
gn	Guarani		(N)	31/01/2019
he	Hebrew		(N)	31/01/2019
hr	Croatian		(N)	31/01/2019
ht	Haitian, Haitian Creole		(N)	31/01/2019
hu	Hungarian		(N)	31/01/2019
hy	Armenian		(N)	31/01/2019
ia	Interlingua (International Auxiliary Language Association)		(N)	31/01/2019
id	Indonesian		(N)	31/01/2019
is	Icelandic		(N)	31/01/2019

it	Italian		(N)	31/01/2019
ja	Japanese		(N)	31/01/2019
jv	Javanese		(N)	31/01/2019
ka	Georgian		(N)	31/01/2019
km	Central Khmer		(N)	31/01/2019
ko	Korean		(N)	31/01/2019
ku	Kurdish		(N)	31/01/2019
lb	Luxembourgish, Letzeburgesch		(N)	31/01/2019
lo	Lao		(N)	31/01/2019
lt	Lithuanian		(N)	31/01/2019
lv	Latvian		(N)	31/01/2019
mg	Malagasy		(N)	31/01/2019
mk	Macedonian		(N)	31/01/2019
mn	Mongolian		(N)	31/01/2019
mt	Maltese		(N)	31/01/2019
nl	Dutch, Flemish		(N)	31/01/2019
no	Norwegian		(N)	31/01/2019
pl	Polish		(N)	31/01/2019
pt	Portuguese		(N)	31/01/2019
ro	Romanian, Moldavian, Moldovan		(N)	31/01/2019
ru	Russian		(N)	31/01/2019
se	Northern Sami		(N)	31/01/2019
sk	Slovak		(N)	31/01/2019
sl	Slovenian		(N)	31/01/2019
sm	Samoan		(N)	31/01/2019
so	Somali		(N)	31/01/2019
sq	Albanian		(N)	31/01/2019
sr	Serbian		(N)	31/01/2019
sv	Swedish		(N)	31/01/2019
sw	Swahili		(N)	31/01/2019
ta	Tamil		(N)	31/01/2019
th	Thai		(N)	31/01/2019
tr	Turkish		(N)	31/01/2019
uk	Ukrainian		(N)	31/01/2019
ur	Urdu		(N)	31/01/2019



uz	Uzbek		(N)	31/01/2019
vi	Vietnamese		(N)	31/01/2019
zh	Chinese		(N)	31/01/2019

**NT7 - unit of measure (U)**

specification of the unit of measure, it is a sub set of table Unit of Measure Code - UN/ECE REC 20 delivered by United Nations Economic Commission for Europe (UN/ECE)

Agency name: eBIZ / UN/ECE

tabella cod.: NT7

File codes list (Generic code): [http://www.ebiz.enea.it/moda-ml/repository/codelist/v2018-1/gc\\_NT7.xml](http://www.ebiz.enea.it/moda-ml/repository/codelist/v2018-1/gc_NT7.xml)

Other link: <http://docs.oasis-open.org/ubl/os-UBL-2.1/cl/gc/default/UnitOfMeasureCode-2.1.gc#>

Code	Description	Adoption note	Version status	Date of insertion
CMK	square centimetre		(N)	20/12/2017
CMQ	cubic centimetre		(N)	20/12/2017
CMT	centimetre			
CNE	centiNewton			
CO2TON	ton of CO2		(N)	10/09/2014
COUPLES	couples			
DMQ	cubic decimetre			
E37	pixel		(N)	11/04/2018
GRM	gram			
HUR	hour			
INH	inch			
KGM	kilogram			
KMT	kilometer			
KWH	kilowatthours		(N)	10/09/2014
LBR	pound			
MIN	minute			
MMK	square millimetre		(N)	20/12/2017
MTK	square metre		(N)	20/12/2017
MTQ	cubic metre			
MTR	metre			
NMB	numero			
ONZ	ounce			

P1	percent			
PPM	parts per million			
PZ	piece		(U)	
RPM	rounds per metre			
YRD	yard			

## T1 - terms of payment

code specifying the terms or time by which the payment must be done

Agency name: eBIZ

tabella cod.: T1

File codes list (Generic code): [http://www.ebiz.enea.it/moda-ml/repository/codelist/v2018-1/gc\\_T1.xml](http://www.ebiz.enea.it/moda-ml/repository/codelist/v2018-1/gc_T1.xml)

Code	Description	Adoption note	Version status	Date of insertion
ANTICIP	PAYMENT IN ADVANCE			
BLCOLLECT/120D	BILL OF LADING 120 DD			
BLCOLLECT/30D	BILL OF LADING 30 DD			
BLCOLLECT/60D	BILL OF LADING 60 DD			
BLCOLLECT/90D	BILL OF LADING 90 DD			
CASH	PAYMENT ON DELIVERY			
CASHINV	PAYMENT ON RECEIPT OF INVOICE			
CREDOC/0D	DOCUMENTARY CREDIT FOR PAYM. AT SIGHT			
CREDOC/120	DOCUMENTARY CREDIT FOR PAYM. AT 120 DD			
CREDOC/150	DOCUMENTARY CREDIT FOR PAYM. AT 150 DD			
CREDOC/180	DOCUMENTARY CREDIT FOR PAYM. AT 180 DD			
CREDOC/30D	DOCUMENTARY CREDIT FOR PAYM. AT 30 DD			
CREDOC/45D	DOCUMENTARY CREDIT FOR PAYM. AT 45 DD			
CREDOC/60	DOCUMENTARY CREDIT FOR PAYM. AT 60 DD			
CREDOC/90	DOCUMENTARY CREDIT FOR PAYM. AT 90 DD			
DEL/10	PAYMENT AT 10 DD AFTER DELIVERY			
DOCOLLECT/120D	DOCUMENTARY COLLECTION AT 120 DD			
DOCOLLECT/30D	DOCUMENTARY COLLECTION AT 30 DD			
DOCOLLECT/60D	DOCUMENTARY COLLECTION AT 60 DD			

DOCOLLECT/90D	DOCUMENTARY COLLECTION AT 90 DD			
INV/120D	PAYMENT AT 120 DD AFTER RECEIPT OF INVOICE			
INV/150D	PAYMENT AT 150 DD AFTER RECEIPT OF INVOICE			
INV/180D	PAYMENT AT 180 DD AFTER RECEIPT OF INVOICE			
INV/30D	PAYMENT AT 30 DD AFTER RECEIPT OF INVOICE			
INV/45D	PAYMENT AT 45 DD AFTER RECEIPT OF INVOICE			
INV/60D	PAYMENT AT 60 DD AFTER RECEIPT OF INVOICE			
INV/90D	PAYMENT AT 90 DD AFTER RECEIPT OF INVOICE			
INVULTIMO	PAYMENT AT END MONTH RECEIPT INVOICE			
INVULTIMO/10D	PAYMENT 10 DD AFTER END MONTH RECEIPT INVOICE			
INVULTIMO/120D	PAYMENT 120 DD AFTER END MONTH RECEIPT INVOICE			
INVULTIMO/150D	PAYMENT 150 DD AFTER END MONTH RECEIPT INVOICE			
INVULTIMO/180D	PAYMENT 180 DD AFTER END MONTH RECEIPT INVOICE			
INVULTIMO/240D	PAYMENT 240 DD AFTER END MONTH RECEIPT INVOICE			
INVULTIMO/30D	PAYMENT 30 DD AFTER END MONTH RECEIPT INVOICE			
INVULTIMO/45D	PAYMENT 45 DD AFTER END MONTH RECEIPT INVOICE			
INVULTIMO/60D	PAYMENT 60 DD AFTER END MONTH RECEIPT INVOICE			
INVULTIMO/90D	PAYMENT 90 DD AFTER END MONTH RECEIPT INVOICE			
NOPAY	WITHOUT PAYMENT			
RECREDOC/0D	IRREVOC. DOCUMENTARY CREDIT FOR PAYM. AT SIGHT			
RECREDOC/120D	IRREVOC. DOCUMENTARY CREDIT FOR PAYM. AT 120 DD			
RECREDOC/150D	IRREVOC. DOCUMENTARY CREDIT FOR PAYM. AT 150 DD			
RECREDOC/180D	IRREVOC. DOCUMENTARY CREDIT FOR PAYM. AT 180 DD			
RECREDOC/30D	IRREVOC. DOCUMENTARY CREDIT FOR PAYM. AT 30 DD			
RECREDOC/45D	IRREVOC. DOCUMENTARY CREDIT FOR PAYM. AT 45 DD			

RECREDOC/60D	IRREVOC. DOCUMENTARY CREDIT FOR PAYM. AT 60 DD			
RECREDOC/90D	IRREVOC. DOCUMENTARY CREDIT FOR PAYM. AT 90 DD			
ULTIMO	PAYMENT BY END MONTH OF DELIVERY			
ULTIMO/10	PAYMENT AT 10 DD AFTER END MONTH OF DELIVERY			

### T10 - ISO3166 - Country

code of the nation

Agency name: ISO

tabella cod.: T10

File codes list (Generic code): [http://www.ebiz.enea.it/moda-ml/repository/codelist/v2018-1/gc\\_T10.xml](http://www.ebiz.enea.it/moda-ml/repository/codelist/v2018-1/gc_T10.xml)

Table not printed: there are 239 elements, more than the maximum specified for printing: 99.

### T2 - Modes of payment

way or means of payment

Agency name: eBIZ

tabella cod.: T2

File codes list (Generic code): [http://www.ebiz.enea.it/moda-ml/repository/codelist/v2018-1/gc\\_T2.xml](http://www.ebiz.enea.it/moda-ml/repository/codelist/v2018-1/gc_T2.xml)

Code	Description	Adoption note	Version status	Date of insertion
BB	bank transfer			
IA	collection through Agent			
IS	collection through Forwarder			
RB	bank receipt			
RD	remittance			
SW	bank SWIFT			
TR	bank draft			

### T21 - type of document

type or class to which the referenced document belongs

Agency name: eBIZ

tabella cod.: T21

File codes list (Generic code): [http://www.ebiz.enea.it/moda-ml/repository/codelist/v2018-1/gc\\_T21.xml](http://www.ebiz.enea.it/moda-ml/repository/codelist/v2018-1/gc_T21.xml)

Code	Description	Adoption note	Version status	Date of insertion
BOR	blanket order		(N)	01/02/2018
CAT	Price catalogue - tech sheet			
CEO	Certificate of origin		(N)	13/04/2018
CER	Certificate		(N)	13/04/2018
COC	colour card			
CRN	Credit note			08/09/2017
CTO	Checking order			01/07/2013
CTR	Contract		(U)	
CXF	CxF3 file			01/07/2013
DAD	Darn order			
DDT	ddt			
DEA	Despatch advise			
DER	Despatch request			
DR	Document Request			02/12/2014
FOR	Forecast			02/12/2014
GSO	Garment stock offer			
GSX	Garment stock offer change			
INV	Invoice			
KCC	Knitting-Clothing Commission Order			02/12/2014
KCI	Garment in Work Inventory Report			02/12/2014
M2M	Made to Measure Production Order			02/12/2014
MAS	Master marker			
MCI	Visual merchandising instruction		(N)	13/04/2018
OCH	Order change			
OFF	Offer			
ORD	Purchase order			
ORP	Order response			
OSR	order status request			
OSS	Offer status			02/12/2014
OST	Order status			
OUR	our reference			
QR	Quality Report			02/12/2014

RAI	Raw Material in Work Inventory Report			02/12/2014
RDC	Raw dyeing commission order			
RDH	Raw dyeing order change			
RDR	Raw dyeing order response			
REA	Receiving advise			
REQ	Request for Offer			
RET	Return			02/12/2014
RSC	Spinning commission order			
RSH	Spinning order change			
RSR	Spinning order response			
SCL	process sheet			
TFC	Textile dyeing-finishing commission order			
TFX	Textile Dyeing-Finishing Order Change			02/12/2014
TPC	Textile printing commission order			
TPX	Textile Printing Order Change			02/12/2014
TWI	Textile in work inventory			
VMI	visual merchandising instructions		(N)	01/02/2018
WAC	Warping commission order			
WEC	Weaving commission order			
YDC	Yarn dyeing commission order			
YDH	Yarn dyeing order change			
YDR	Yarn dyeing order response			
YTC	Twisting commission order			
YWI	Yarn in work inventory			

### T3 - terms of delivery

specification of the terms of trade (INCOTERMS)

Agency name: Incoterms

tabella cod.: T3

File codes list (Generic code): [http://www.ebiz.enea.it/moda-ml/repository/codelist/v2018-1/gc\\_T3.xml](http://www.ebiz.enea.it/moda-ml/repository/codelist/v2018-1/gc_T3.xml)

Cod e	Description	Adoption note	Versi on statu s	Date of insertio n
CF R	COST AND FREIGHT (named port of destination)			

CIF	COST, INSURANCE AND FREIGHT (named port of destination)			
CIP	CARRIAGE AND INSURANCE PAID (named place of destination)			
CP T	CARRIAGE PAID (named place of destination)			
DA F	DELIVERED AT FRONTIER (named place)	according to Incoterms® 2010 it is obsolete		08/12/2017
DA P	Delivered at Place of destination (named place of destination)	according to Incoterms® 2010		08/12/2017
DA T	Delivered at Terminal (named place of destination)	according to Incoterms® 2010		08/12/2017
DD P	DELIVERED DUTY PAID (named place of destination)			
DD U	DELIVERED DUTY UNPAID (named place of destination)	according to Incoterms® 2010 it is obsolete, use DAP		08/12/2017
DE Q	DELIVERED EX-QUAY (named port of destination)	according to Incoterms® 2010 it is obsolete		08/12/2017
DE S	DELIVERED EX-SHIP (named port of destination)	according to Incoterms® 2010 it is obsolete		08/12/2017
EX W	EX WORKS (named place)			
FA S	FREE ALONGSIDE SHIP (named port of shipment)			
FC A	FREE CARRIER (named place)			
FO B	FREE ON BOARD (named port of shipment)			

### T38 - transport conditions

special condition of transport or special service requested to the Forwarder

tabella cod.: T38

File codes list (Generic code): [http://www.ebiz.enea.it/moda-ml/repository/codelist/v2018-1/gc\\_T38.xml](http://www.ebiz.enea.it/moda-ml/repository/codelist/v2018-1/gc_T38.xml)

Code	Description	Adoption note	Version status	Date of insertion
ACC	arrange customs clearance			
CAL	Carrier loads			
CAU	Carrier unloads			
CMR	CMR carnet			
FFN	freight forwarders national conditions			
FLD	special agreement for full loading			

NCC	do not arrange customs clearance			
PPB	packaging paid by Buyer			
PPS	packaging paid by Supplier			
PRO	proof of delivery			
RFR	return container free			
RPC	return container paid by Customer			
RPS	return container paid by Supplier			
SHL	Shipper loads			
SHU	Consignee unloads			

#### T40 - type of transport means

means of transport, in general or referred to a specific leg

Agency name: eBIZ

tabella cod.: T40

File codes list (Generic code): [http://www.ebiz.enea.it/moda-ml/repository/codelist/v2018-1/gc\\_T40.xml](http://www.ebiz.enea.it/moda-ml/repository/codelist/v2018-1/gc_T40.xml)

Code	Description	Adoption note	Version status	Date of insertion
AIR	aircraft			
SHP	ship			
TRU	truck			
VAN	van			

#### T41 - type of Allowance or Charge

coded specification of an Allowance or Charge (elaborated from UNECE 4465)

Agency name: eBIZ

tabella cod.: T41

File codes list (Generic code): [http://www.ebiz.enea.it/moda-ml/repository/codelist/v2018-1/gc\\_T41.xml](http://www.ebiz.enea.it/moda-ml/repository/codelist/v2018-1/gc_T41.xml)

Code	Description	Adoption note	Version status	Date of insertion
1	Agreed settlement		(N)	19/08/2018
10	Costs for draft		(N)	19/08/2018



11	Bank charges	DEPRECATED, use CBK	(N)	19/08/20 18
12	Agent commission		(N)	19/08/20 18
14	Wrong delivery		(N)	19/08/20 18
15	Goods returned to agent		(N)	19/08/20 18
16	Goods partly returned		(N)	19/08/20 18
17	Transport damage		(N)	19/08/20 18
19	Trade discount		(N)	19/08/20 18
2	Below specification goods		(N)	19/08/20 18
20	Deduction for late delivery	DEPRECATED, use CWB	(N)	19/08/20 18
21	Advertising costs		(N)	19/08/20 18
22	Customs duties		(N)	19/08/20 18
23	Telephone and postal costs		(N)	19/08/20 18
24	Repair costs		(N)	19/08/20 18
25	Attorney fees		(N)	19/08/20 18
26	Taxes		(N)	19/08/20 18
3	Damaged goods		(N)	19/08/20 18
30	Direct payment to seller		(N)	19/08/20 18
32	Goods not delivered		(N)	19/08/20 18
33	Late delivery		(N)	19/08/20 18
35	Goods returned		(N)	19/08/20 18
36	Invoice not received		(N)	19/08/20 18
37	Credit note to debtor/not to us		(N)	19/08/20 18

38	Deducted bonus		(N)	19/08/2018
39	Deducted discount		(N)	19/08/2018
4	Short delivery		(N)	19/08/2018
40	Deducted freight costs		(N)	19/08/2018
41	Deduction against other invoices		(N)	19/08/2018
42	Credit balance(s)		(N)	19/08/2018
45	Debit note to seller		(N)	19/08/2018
46	Discount beyond terms		(N)	19/08/2018
48	Allowance/charge error		(N)	19/08/2018
49	Substitute product		(N)	19/08/2018
50	Terms of sale error		(N)	19/08/2018
52	Wrong invoice		(N)	19/08/2018
53	Duplicate invoice		(N)	19/08/2018
54	Weight error		(N)	19/08/2018
55	Additional charge not authorized		(N)	19/08/2018
56	Incorrect discount		(N)	19/08/2018
57	Price change		(N)	19/08/2018
58	Variation		(N)	19/08/2018
59	Chargeback		(N)	19/08/2018
65	Settlement to agent		(N)	19/08/2018
66	Cash discount		(N)	19/08/2018
7	Payment on account		(N)	19/08/2018

70	Wrong monetary amount resulting from incorrect free goods quantity		(N)	19/08/2018
72	Temporary special promotion		(N)	19/08/2018
73	Difference in tax rate		(N)	19/08/2018
74	Quantity discount		(N)	19/08/2018
75	Promotion discount		(N)	19/08/2018
76	Cancellation deadline passed		(N)	19/08/2018
77	Pricing discount		(N)	19/08/2018
78	Volume discount		(N)	19/08/2018
79	Sundry discount		(N)	19/08/2018
8	Returnable container charge included		(N)	19/08/2018
9	Invoice error		(N)	19/08/2018
AW A	bonus for works ahead of schedule			
CBK	bank charges			
CC R	servizio di corriere			
CIN	insurance			
CLB	labelling			
CPK	packing			
CSP	special packing			
CW B	penalty for works behind schedule			

#### T421 - size system: nationality

nation or agency identifying the size system

Agency name: eBIZ

tabella cod.: T421

File codes list (Generic code): [http://www.ebiz.enea.it/moda-ml/repository/codelist/v2018-1/gc\\_T421.xml](http://www.ebiz.enea.it/moda-ml/repository/codelist/v2018-1/gc_T421.xml)

Code	Description	Adoption note	Version status	Date of insertion
DE	Germany			
ES	Spain			
EU	Europe			
FR	France			
IT	Italy			
UK	United Kingdom			
US	USA			
XX	International			

#### T422 - size system: market segment

market segment identifying the size system

Agency name: eBIZ

tabella cod.: T422

File codes list (Generic code): [http://www.ebiz.enea.it/moda-ml/repository/codelist/v2018-1/gc\\_T422.xml](http://www.ebiz.enea.it/moda-ml/repository/codelist/v2018-1/gc_T422.xml)

Code	Description	Adoption note	Version status	Date of insertion
B	baby			
C	child			
K	kid			
M	man			
U	unisex			
W	woman			

#### T423 - size system: base

base of the size system

Agency name: eBIZ

tabella cod.: T423

File codes list (Generic code): [http://www.ebiz.enea.it/moda-ml/repository/codelist/v2018-1/gc\\_T423.xml](http://www.ebiz.enea.it/moda-ml/repository/codelist/v2018-1/gc_T423.xml)

Code	Description	Adoption note	Version status	Date of insertion
1	arab numbers			
2	latin numbers			

3	symbols			
4	letters			
H	height			
L	length			
U	unic			
W	weight			

#### T44 - additional code type

qualifier of the additional coding of a product

Agency name: eBIZ

tabella cod.: T44

File codes list (Generic code): [http://www.ebiz.enea.it/moda-ml/repository/codelist/v2018-1/gc\\_T44.xml](http://www.ebiz.enea.it/moda-ml/repository/codelist/v2018-1/gc_T44.xml)

Code	Description	Adoption note	Version status	Date of insertion
CC	colour card			
CL	sales collection			
CO	company identification code		(N)	08/09/2017
DY	dye number			
LT	lot number			
MDI	Made in			08/09/2017
MS	manufacturing state			
PKG	packaging			09/09/2014
PL	product line			
RGB	RGB value			
SE	selvedge code			

#### T61 - duty or tax or fee type

duty or tax or fee type

Agency name: eBIZ

tabella cod.: T61

File codes list (Generic code): [http://www.ebiz.enea.it/moda-ml/repository/codelist/v2018-1/gc\\_T61.xml](http://www.ebiz.enea.it/moda-ml/repository/codelist/v2018-1/gc_T61.xml)

Code	Description	Adoption note	Version status	Date of insertion
BOL	stamp duty			01/07/2013

CUD	customs duty			01/07/2013
ENV	environmental tax			01/07/2013
FRE	no tax			01/07/2013
OTH	other tax charges			01/07/2013
VAT	value added tax			01/07/2013

## T62 - duty or tax or fee category

duty or tax or fee category

Agency name: eBIZ

tabella cod.: T62

File codes list (Generic code): [http://www.ebiz.enea.it/moda-ml/repository/codelist/v2018-1/gc\\_T62.xml](http://www.ebiz.enea.it/moda-ml/repository/codelist/v2018-1/gc_T62.xml)

Code	Description	Adoption note	Version status	Date of insertion
AA	lower than standard rate			01/07/2013
E	tax not applicable			01/07/2013
H	higher than standard rate			01/07/2013
O	outside scope of tax			01/07/2013
S	standard rate			01/07/2013
Z	zero rate goods			01/07/2013

## T8 - Modes of Transport

way of transport, in general or referred to the specified leg

Agency name: eBIZ

tabella cod.: T8

File codes list (Generic code): [http://www.ebiz.enea.it/moda-ml/repository/codelist/v2018-1/gc\\_T8.xml](http://www.ebiz.enea.it/moda-ml/repository/codelist/v2018-1/gc_T8.xml)

Code	Description	Adoption note	Version status	Date of insertion
1	MARITIME TRANSPORT			
10	Courier			01/07/2013
2	RAIL TRANSPORT			
3	ROAD TRANSPORT			
4	AIR TRANSPORT			
5	MAIL			
6	AIR + SHIP TRANSPORT			

8	INLAND WATER TRANSPORT			
9	MODE UNKNOWN			

**T9 - ISO4217 - Currency**

currency code

Agency name: ISO

tabella cod.: T9

File codes list (Generic code): [http://www.ebiz.enea.it/moda-ml/repository/codelist/v2018-1/gc\\_T9.xml](http://www.ebiz.enea.it/moda-ml/repository/codelist/v2018-1/gc_T9.xml)

Table not printed: there are 205 elements, more than the maximum specified for printing: 99.

## Annex C

### New or changed elements towards previous version

Changes or added elements (changes in description excluded; changes in aggregation notes and best practice included): 180

Test Type	Tag	Status	Item type	Changes related to
Attrib	AC_amount	NEW	AC amount	Has NEW attribute: data currency
Elem(E)	AC_categoryText	UPDATED	AC category text	Property: Length_Max Old value: 70 New value: 250
Child	acsCode	UPDATED	Accessory code	relationship with child: description  Property: Cardmax Old value: 1 New value: 999
Elem(E)	acsCode	UPDATED	Accessory code	Property: class Old value: <i>garment accessory</i> New value: <i>accessory</i>
Child	acsCode	UPDATED	Accessory code	relationship with child: description  Property: Aggregation Note_English Old value: New value: <i>Product description</i>
Attrib	acsComInfo	NEW	Accessory commercial information	Has NEW attribute: end use code
Child	acsComInfo	NEW	Accessory commercial information	Has NEW child of: Brand
Child	acsComInfo	NEW	Accessory commercial information	Has NEW child of: operational code
Child	acsComInfo	NEW	Accessory commercial information	Has NEW child of: product line
Child	acsComInfo	NEW	Accessory commercial information	Has NEW child of: general note
Elem(E)	acsComInfo	UPDATED	Accessory commercial information	Property: class Old value: <i>garment accessory</i> New value: <i>accessory</i>
Attrib	acsPackCode	NEW	Accessory packing code	Has NEW attribute: numbering organisation code



Attr ib	acsPackC ode	NE W	Accessory p acking code	Has NEW attribute: code list reference
Attr ib	acsPackC ode	NE W	Accessory p acking code	Has NEW attribute: code list name
Attr ib	acsPackC ode	NE W	Accessory p acking code	Has NEW attribute: code list version
Ele m( E)	acsPackC ode	UPD ATE D	Accessory p acking code	Property: class Old value: <i>garment accessory</i> New value: <i>accessory</i>
Ele m( E)	acsPack	UPD ATE D	Accessory p acking detail s	Property: class Old value: <i>garment accessory</i> New value: <i>accessory</i>
Ele m( E)	acsPackT ext	UPD ATE D	Accessory p acking text	Property: Length_Max Old value: 40 New value: 250
Ele m( E)	acsPackT ext	UPD ATE D	Accessory p acking text	Property: class Old value: <i>garment accessory</i> New value: <i>accessory</i>
Ele m(l )	accountN ame	NE W	Account na me	
Attr ib	additional dentifier	NE W	Additional P arty Identifie r	Has NEW attribute: numbering organisation code
Attr ib	additional dentifier	NE W	Additional P arty Identifie r	Has NEW attribute: id Qualifier
Ele m(l )	additional Compone ntCode	NE W	component Code	
Ele m(l )	additional dentifier	NE W	Additional P arty Identifie r	
Attr ib	allowance Charge	NE W	Allowance a nd Charge	Has NEW attribute: is Charge
Attr ib	allowance Charge	NE W	Allowance a nd Charge	Has NEW attribute: maximum quantity
Attr ib	allowance Charge	NE W	Allowance a nd Charge	Has NEW attribute: minimum quantity
Attr ib	allowance Charge	NE W	Allowance a nd Charge	Has NEW attribute: data currency
Attr ib	allowance Charge	NE W	Allowance a nd Charge	Has NEW attribute: unit of measure code
Ele m( E)	art	UPD ATE D	article identif ier	Property: Length_Max Old value: 25 New value: 80

Attr ib	art	UPD ATE D	article identifier	Its attribute: code list reference  Property: Aggregation Note_English Old value: <i>this attribute should be ALTERNATIVE to the others</i> New value: <i>at least one out of this attribute and "numberingOrg" should be set</i>
Ele m(l )	attachme nt	NE W	attachment	
Chil d	attachme nt	NE W	attachment	Has NEW child of: file name
Chil d	attachme nt	NE W	attachment	Has NEW child of: external reference
Chil d	attachme nt	NE W	attachment	Has NEW child of: binary object
Chil d	AXitem	NE W	AX item	Has NEW child of: line identifier
Chil d	AXitem	NE W	AX item	Has NEW child of: tax scheme
Chil d	AXitem	NE W	AX item	Has NEW child of: color-size range
Chil d	AXitem	UPD ATE D	AX item	relationship with child: product quantity  Property: BestPractice_English Old value: New value: <i>this element can have two instances only if the units of measure are different</i>
Chil d	AXitem	UPD ATE D	AX item	relationship with child: general note  Property: Cardmax Old value: 19 New value: 99
Chil d	AXitem	UPD ATE D	AX item	relationship with child: Third Party  Property: Cardmax Old value: 1 New value: 3
Chil d	finInfo	NE W	Bank details	Has NEW child of: general note
Chil d	finInfo	NE W	Bank details	Has NEW child of: Account name
Chil d	finInfo	NE W	Bank details	Has NEW child of: Bank
Ele m(l )	bank	NE W	Bank (*)	

Attr ib	binaryObj ect	NE W	binary object	Has NEW attribute: encoding
Attr ib	binaryObj ect	NE W	binary object	Has NEW attribute: mime
Attr ib	binaryObj ect	NE W	binary object	Has NEW attribute: format
Attr ib	binaryObj ect	NE W	binary object	Has NEW attribute: character set
Ele m(l )	binaryObj ect	NE W	binary object	
Attr ib	brand	NE W	Brand	Has NEW attribute: code list version
Ele m(l )	brand	NE W	Brand	
Attr ib	brand	NE W	Brand	Has NEW attribute: numbering organisation code
Attr ib	brand	NE W	Brand	Has NEW attribute: code list reference
Attr ib	brand	NE W	Brand	Has NEW attribute: code list name
Chil d	buyer	NE W	Buyer (*)	Has NEW child of: Party identifier
Chil d	buyer	NE W	Buyer (*)	Has NEW child of: Additional Party Identifier
Attr ib	buyer	NE W	Buyer (*)	Has NEW attribute: sender Party qualifier
Ele m(l )	character SetCode	NE W	character se t code	
Ele m(l )	character Set	NE W	character se t	
Ele m(l )	codeQuali fier	NE W	code qualifie r	
Chil d	csRange	NE W	color-size ra nge	Has NEW child of: garment variant
Chil d	csRange	NE W	color-size ra nge	Has NEW child of: drop identifier
Chil d	csRange	UPD ATE D	color-size ra nge	relationship with child: articles colour identifier  Property: Aggregation Note_English Old value: New value: <i>used only if not already specified in the article code</i>

Attr ib	additional Compon entCode	NE W	component Code	Has NEW attribute: code list reference
Attr ib	additional Compon entCode	NE W	component Code	Has NEW attribute: numbering organisation code
Attr ib	additional Compon entCode	NE W	component Code	Has NEW attribute: code list version
Attr ib	additional Compon entCode	NE W	component Code	Has NEW attribute: code list name
Ele m( E)	deliveryPI ace	UPD ATE D	delivery plac e	Property: Length_Max Old value: 40 New value: 250
Attr ib	descriptio n	NE W	description	Has NEW attribute: In
Ele m( E)	descriptio n	UPD ATE D	description	Property: Length_Max Old value: 70 New value: 250
Attr ib	despatch Date	NE W	despatch da te	Has NEW attribute: date format
Ele m(l )	despatch Date	NE W	despatch da te	
Ele m(l )	despatch Place	NE W	despatch pla ce	
Attr ib	drop	NE W	drop identifi er	Has NEW attribute: numbering organisation code
Attr ib	drop	NE W	drop identifi er	Has NEW attribute: code list name
Attr ib	drop	NE W	drop identifi er	Has NEW attribute: code list version
Ele m( E)	email	UPD ATE D	e-mail	Property: Length_Max Old value: 80 New value: 250
Ele m(l )	encoding Code	NE W	encoding co de	
Ele m(l )	encoding	NE W	encoding	
Ele m(l )	exchange Rate	NE W	exchange ra te	
Chil d	externalR eference	NE W	external refe rence	Has NEW child of: uri

Child	externalReference	NEW	external reference	Has NEW child of: format code
Child	externalReference	NEW	external reference	Has NEW child of: character set code
Child	externalReference	NEW	external reference	Has NEW child of: mime code
Child	externalReference	NEW	external reference	Has NEW child of: encoding code
Element()	externalReference	NEW	external reference	
Attribute	fileName	NEW	file name	Has NEW attribute: numbering organisation code
Element()	fileName	NEW	file name	
Element()	formatCode	NEW	format code	
Element()	format	NEW	format	
Child	garmentVariant	NEW	garment variant	Has NEW child of: variant code
Child	garmentVariant	NEW	garment variant	Has NEW child of: variant type
Element()	garmentVariant	NEW	garment variant	
Attribute	note	UPDATED	general note	Its attribute: numbering organisation code  Property: Aggregation Note_English Old value: New value: <i>must be used to specify the organization that created the list of codes used in "noteLabel"</i>
Attribute	goodsAmount	NEW	goods total amount	Has NEW attribute: data currency
Element()	idQualifier	NEW	id Qualifier	
Element()	isCharge	NEW	is Charge	
Element()	isURL	NEW	is URL	
Child	itemIdentification	NEW	item identification	Has NEW child of: serial number

Element()	itemIdentification	NEW	item identification	
Child	itemsList	NEW	items list	Has NEW child of: quality level
Child	itemsList	NEW	items list	Has NEW child of: item identification
Element()	itemsList	NEW	items list	
Element(E)	legalName	UPDATE	Legal name	Property: Length_Max Old value: 80 New value: 250
Element(E)	itemID	UPDATE	line item number	Property: Length_Max Old value: 6 New value: 40
Attribute	lineN	UPDATE	line number	Its attribute: VAT rate  Property: Aggregation Note_English Old value: New value: <i>Deprecated, prefer dtScheme when available.</i>
Element()	lineID	NEW	line identifier	
Element()	ln	NEW	ln	
Element()	maxQty	NEW	maximum quantity	
Element()	mimeCode	NEW	mime code	
Element()	mime	NEW	mime	
Attribute	operationalCode	NEW	operational code	Has NEW attribute: numbering organisation code
Attribute	operationalCode	NEW	operational code	Has NEW attribute: code list reference
Attribute	operationalCode	NEW	operational code	Has NEW attribute: code qualifier
Attribute	operationalCode	NEW	operational code	Has NEW attribute: code list version
Attribute	operationalCode	NEW	operational code	Has NEW attribute: code list name

Element()	operationalCode	NEW	operational code	
Attribute	otherCurrency	NEW	other currency code	Has NEW attribute: exchange rate
Attribute	productLine	NEW	product line	Has NEW attribute: code list name
Attribute	productLine	NEW	product line	Has NEW attribute: numbering organisation code
Attribute	productLine	NEW	product line	Has NEW attribute: code list reference
Attribute	productLine	NEW	product line	Has NEW attribute: code list version
Element()	productLine	NEW	product line	
Element()	progr	NEW	progressive number	
Element(E)	project	UPDATED	project identifier	Property: Length_Max Old value: 25 New value: 40
Attribute	qualityLevel	NEW	quality level	Has NEW attribute: numbering organisation code
Attribute	qualityLevel	NEW	quality level	Has NEW attribute: code list reference
Attribute	qualityLevel	NEW	quality level	Has NEW attribute: code list version
Attribute	qualityLevel	NEW	quality level	Has NEW attribute: code list name
Element()	qualityLevel	NEW	quality level	
Child	refDoc	NEW	reference document details	Has NEW child of: attachment
Child	refDoc	UPDATED	reference document details	relationship with child: document identifier  Property: BestPractice_English Old value: New value: <i>numberingOrg indicates the role that produced the document identifier (it is allowed to declare two different ones -e.g. customer and supplier - with two docID with different numberingOrg)</i>
Attribute	season	NEW	season identifier	Has NEW attribute: code list reference
Attribute	season	NEW	season identifier	Has NEW attribute: numbering organisation code

Attr ib	season	NE W	season ident ifier	Has NEW attribute: code list name
Attr ib	season	NE W	season ident ifier	Has NEW attribute: code list version
Attr ib	serialN	NE W	serial numb er	Has NEW attribute: id Qualifier
Ele m( E)	serialN	UPD ATE D	serial numb er	Property: Length_Max Old value: 15 New value: 250
Attr ib	size	NE W	size identifie r	Has NEW attribute: numbering organisation code
Attr ib	size	NE W	size identifie r	Has NEW attribute: code list name
Attr ib	size	NE W	size identifie r	Has NEW attribute: code list version
Chil d	sizeRow	NE W	size row	Has NEW child of: items list
Chil d	sizeRow	NE W	size row	Has NEW child of: component Code
Chil d	sizeRow	UPD ATE D	size row	relationship with child: drop identifier  Property: Aggregation Note_English Old value: New value: <i>DEPRECATED</i> , anyhow it is used only if not already sp ecified in the article code or csRange
Ele m(l )	subDept	NE W	department i dentifier	
Chil d	supplier	NE W	Supplier (*)	Has NEW child of: Party identifier
Chil d	supplier	NE W	Supplier (*)	Has NEW child of: Additional Party Identifier
Attr ib	supplier	NE W	Supplier (*)	Has NEW attribute: sender Party qualifier
Attr ib	legalRef	NE W	tax legal ref erence	Has NEW attribute: code list name
Attr ib	legalRef	NE W	tax legal ref erence	Has NEW attribute: numbering organisation code
Attr ib	legalRef	NE W	tax legal ref erence	Has NEW attribute: code list version
Attr ib	legalRef	UPD ATE D	tax legal ref erence	Its attribute: code list reference  Property: Use Old value: <i>Required</i> New value: <i>Optional</i>



Child	dtScheme	UPDATE	tax scheme	relationship with child: general note  Property: Cardmax Old value: 19 New value: 99
Element(E)	payTermText	UPDATE	terms of payment text	Property: Length_Max Old value: 40 New value: 250
Element(E)	incoTermText	UPDATE	terms of trade text	Property: Length_Max Old value: 70 New value: 250
Child	thirdParty	NEW	Third Party (*)	Has NEW child of: Party identifier
Attribute	thirdParty	NEW	Third Party (*)	Has NEW attribute: sender Party qualifier
Child	terms	UPDATE	Trade conditions	relationship with child: Transport information  Property: Cardmax Old value: 1 New value: 5
Element(E)	transConditionText	UPDATE	transport condition - text	Property: Length_Max Old value: 100 New value: 250
Child	transInfo	NEW	Transport information	Has NEW child of: despatch place
Child	transInfo	NEW	Transport information	Has NEW child of: despatch date
Child	transInfo	NEW	Transport information	Has NEW child of: effective delivery date
Attribute	transInfo	NEW	Transport information	Has NEW attribute: progressive number
Child	TXheader	UPDATE	TX header	relationship with child: reference document details  Property: Aggregation Note_English Old value: New value: <i>At least one occurrence should contain a reference to the order it responds to (for example docType=ORD or OCH or BOR)</i>
Child	TXheader	UPDATE	TX header	relationship with child: general note  Property: Cardmax Old value: 19 New value: 99
Attribute	price	NEW	unit price amount	Has NEW attribute: data currency
Element(E)	price	UPDATE	unit price amount	Property: Digits_Dec Old value: 2 New value: 4

Attr ib	uri	NE W	uri	Has NEW attribute: is URL
Ele m(l )	uri	NE W	uri	
Attr ib	variantCo de	NE W	variant code	Has NEW attribute: code list version
Attr ib	variantCo de	NE W	variant code	Has NEW attribute: code list name
Attr ib	variantCo de	NE W	variant code	Has NEW attribute: numbering organisation code
Attr ib	variantCo de	NE W	variant code	Has NEW attribute: code list reference
Attr ib	variantTy pe	NE W	variant type	Has NEW attribute: code list reference
Attr ib	variantTy pe	NE W	variant type	Has NEW attribute: code list version
Attr ib	variantTy pe	NE W	variant type	Has NEW attribute: code list name
Attr ib	variantTy pe	NE W	variant type	Has NEW attribute: numbering organisation code
Ele m(l )	variantCo de	NE W	variant code	
Ele m(l )	variantTy pe	NE W	variant type	

## Annex D

### New or changed tables and codes towards previous version

Changes or added items (changes in CodeListAgencyName excluded; changes in adoption notes and code description included): 164

Test Type	Status	Table code	Table description	Code	Change description
Code	UPDATE	N1		A (the order is open without a concrete delivery of product; it establishes an amount of goods to be produced in a future)	adoption_note Old value: New value: <i>the order is open without a concrete delivery of product; it establishes an amount of goods to be produced in a future</i>
Code	UPDATE	N1		D (orders an amount of goods to be delivered (and invoiced and produced if necessary); it is important that it is clear that this amount should be subtracted from the amount of the blanket order referred in the refDoc element)	adoption_note Old value: New value: <i>orders an amount of goods to be delivered (and invoiced and produced if necessary); it is important that it is clear that this amount should be subtracted from the amount of the blanket order referred in the refDoc element</i>
Table	UPDATE	N10	eBIZ TCFUpstream version		Description_English Old value: <i>eBIZ Moda-ML version</i> New value: <i>eBIZ TCFUpstream version</i>
Code	NEW	N100		2018-1 (v2018-1)	
Code	NEW	N100		draft (draft)	
Table	UPDATE	N16	VAT rate or code		Generalities Old value: <i>VAT rate or code ( deprecated , use dtScheme element )</i> New value: <i>VAT rate or code ( DEPRECATED, use dtScheme element )</i>
Code	NEW	N2		AU (Auditor)	
Code	NEW	N2		CE (Certification authority)	

C o d e	NE W	N T 2		SC (Sub contractor)	
C o d e	NE W	N T 2		SM (Service/ePlatform manager)	
C o d e	NE W	N T 4		SA (Sample)	
T a b l e	UP DA TE D	N T 4	end use		Generalities Old value: <i>specifies the final use of the fabric</i> New value: <i>specifies the final use of the product</i>
T a b l e	NE W	N T 43	operatio nal code qualifier		
C o d e	NE W	N T 43		1 (event)	
C o d e	NE W	N T 43		2 (sales channel)	
C o d e	NE W	N T 43		3 (goods management type)	
C o d e	NE W	N T 43		4 (special initiative)	
C o d e	NE W	N T 6		EB (eBIZ)	
C o d e	UP DA TE D	N T 6		ML (DEPRECATED)	adoption_note Old value: New value: <i>DEPRECATED</i>
T a b l e	NE W	N T 60	languag e, codes from IS O 639-1 (subset)		

C o d e	NE W	N T 60		<i>F</i> (Female)	
C o d e	NE W	N T 60		<i>af</i> (Afrikaans)	
C o d e	NE W	N T 60		<i>ar</i> (Arabic)	
C o d e	NE W	N T 60		<i>be</i> (Belarusian)	
C o d e	NE W	N T 60		<i>bg</i> (Bulgarian)	
C o d e	NE W	N T 60		<i>bn</i> (Bengali)	
C o d e	NE W	N T 60		<i>bo</i> (Tibetan)	
C o d e	NE W	N T 60		<i>bs</i> (Bosnian)	
C o d e	NE W	N T 60		<i>ca</i> (Catalan, Valencian)	
C o d e	NE W	N T 60		<i>cs</i> (Czech)	
C o d e	NE W	N T 60		<i>da</i> (Danish)	
C o d e	NE W	N T 60		<i>de</i> (German)	
C o d e	NE W	N T 60		<i>el</i> (Greek, Modern (1453-))	

C o d e	NE W	N T 60		<i>en</i> (English)	
C o d e	NE W	N T 60		<i>eo</i> (Esperanto)	
C o d e	NE W	N T 60		<i>es</i> (Spanish, Castilian)	
C o d e	NE W	N T 60		<i>et</i> (Estonian)	
C o d e	NE W	N T 60		<i>eu</i> (Basque)	
C o d e	NE W	N T 60		<i>fa</i> (Persian)	
C o d e	NE W	N T 60		<i>fi</i> (Finnish)	
C o d e	NE W	N T 60		<i>fr</i> (French)	
C o d e	NE W	N T 60		<i>ga</i> (Irish)	
C o d e	NE W	N T 60		<i>gd</i> (Gaelic, Scottish Gaelic)	
C o d e	NE W	N T 60		<i>gn</i> (Guarani)	
C o d e	NE W	N T 60		<i>he</i> (Hebrew)	
C o d e	NE W	N T 60		<i>hr</i> (Croatian)	

C o d e	NE W	N T 60		<i>ht</i> (Haitian, Haitian Creole)	
C o d e	NE W	N T 60		<i>hu</i> (Hungarian)	
C o d e	NE W	N T 60		<i>hy</i> (Armenian)	
C o d e	NE W	N T 60		<i>ia</i> (Interlingua (International Auxiliary Language Association))	
C o d e	NE W	N T 60		<i>id</i> (Indonesian)	
C o d e	NE W	N T 60		<i>is</i> (Icelandic)	
C o d e	NE W	N T 60		<i>it</i> (Italian)	
C o d e	NE W	N T 60		<i>ja</i> (Japanese)	
C o d e	NE W	N T 60		<i>ju</i> (Javanese)	
C o d e	NE W	N T 60		<i>ka</i> (Georgian)	
C o d e	NE W	N T 60		<i>km</i> (Central Khmer)	
C o d e	NE W	N T 60		<i>ko</i> (Korean)	
C o d e	NE W	N T 60		<i>ku</i> (Kurdish)	

C o d e	NE W	N T 60		<i>lb</i> (Luxembourgish, Letzeburgesch)	
C o d e	NE W	N T 60		<i>lo</i> (Lao)	
C o d e	NE W	N T 60		<i>lt</i> (Lithuanian)	
C o d e	NE W	N T 60		<i>lv</i> (Latvian)	
C o d e	NE W	N T 60		<i>mg</i> (Malagasy)	
C o d e	NE W	N T 60		<i>mk</i> (Macedonian)	
C o d e	NE W	N T 60		<i>mn</i> (Mongolian)	
C o d e	NE W	N T 60		<i>mt</i> (Maltese)	
C o d e	NE W	N T 60		<i>nl</i> (Dutch, Flemish)	
C o d e	NE W	N T 60		<i>no</i> (Norwegian)	
C o d e	NE W	N T 60		<i>pl</i> (Polish)	
C o d e	NE W	N T 60		<i>pt</i> (Portuguese)	
C o d e	NE W	N T 60		<i>ro</i> (Romanian, Moldavian, Moldovan)	



C o d e	NE W	N T 60		<i>ru</i> (Russian)	
C o d e	NE W	N T 60		<i>se</i> (Northern Sami)	
C o d e	NE W	N T 60		<i>sk</i> (Slovak)	
C o d e	NE W	N T 60		<i>sl</i> (Slovenian)	
C o d e	NE W	N T 60		<i>sm</i> (Samoan)	
C o d e	NE W	N T 60		<i>so</i> (Somali)	
C o d e	NE W	N T 60		<i>sq</i> (Albanian)	
C o d e	NE W	N T 60		<i>sr</i> (Serbian)	
C o d e	NE W	N T 60		<i>sv</i> (Swedish)	
C o d e	NE W	N T 60		<i>sw</i> (Swahili)	
C o d e	NE W	N T 60		<i>ta</i> (Tamil)	
C o d e	NE W	N T 60		<i>th</i> (Thai)	
C o d e	NE W	N T 60		<i>tr</i> (Turkish)	

C o d e	NE W	N T 60		<i>uk</i> (Ukrainian)	
C o d e	NE W	N T 60		<i>ur</i> (Urdu)	
C o d e	NE W	N T 60		<i>uz</i> (Uzbek)	
C o d e	NE W	N T 60		<i>vi</i> (Vietnamese)	
C o d e	NE W	N T 60		<i>zh</i> (Chinese)	
C o d e	NE W	N T 7		<i>CMK</i> (square centimetre)	
C o d e	NE W	N T 7		<i>CMQ</i> (cubic centimetre)	
C o d e	NE W	N T 7		<i>E37</i> (pixel)	
C o d e	NE W	N T 7		<i>KWH</i> (kilowatthours)	
C o d e	NE W	N T 7		<i>MMK</i> (square millimetre)	
C o d e	NE W	N T 7		<i>MTK</i> (square metre)	
C o d e	NE W	N T 7		<i>CO2TON</i> (ton of CO2)	
T a b l e	UP DA TE D	N T 7	unit of m easure		OtherExternalReferenceURL Old value: New value: <a href="http://docs.oasis-open.org/u">http://docs.oasis-open.org/u</a>

					<i>bl/os-UBL-2.1/cl/gc/default/UnitOfMeasureCode-2.1.gc#</i>
T a b l e	UP DA TE D	N T 7	unit of m easure		Description_English Old value: <i>unity of measure</i> New value: <i>unit of measure</i>
C o d e	NE W	T 21		<i>BOR</i> (blanket order)	
C o d e	NE W	T 21		<i>CEO</i> (Certificate of origin)	
C o d e	NE W	T 21		<i>CER</i> (Certificate)	
C o d e	UP DA TE D	T 21		<i>CTR</i> (Contract)	Text_English Old value: <i>contract</i> New value: <i>Contract</i>
C o d e	NE W	T 21		<i>MCI</i> (Visual merchandising instruction)	
C o d e	NE W	T 21		<i>VMI</i> (visual merchandising instructions)	
C o d e	NE W	T 41		<i>1</i> (Agreed settlement)	
C o d e	NE W	T 41		<i>2</i> (Below specification goods)	
C o d e	NE W	T 41		<i>3</i> (Damaged goods)	
C o d e	NE W	T 41		<i>4</i> (Short delivery)	
C o d e	NE W	T 41		<i>7</i> (Payment on account)	
C o	NE W	T 41		<i>8</i> (Returnable container charge included)	

d e					
C o d e	NE W	T 41		9 (Invoice error)	
C o d e	NE W	T 41		10 (Costs for draft)	
C o d e	NE W	T 41		11 (Bank charges)	
C o d e	NE W	T 41		12 (Agent commission)	
C o d e	NE W	T 41		14 (Wrong delivery)	
C o d e	NE W	T 41		15 (Goods returned to agent)	
C o d e	NE W	T 41		16 (Goods partly returned)	
C o d e	NE W	T 41		17 (Transport damage)	
C o d e	NE W	T 41		19 (Trade discount)	
C o d e	NE W	T 41		20 (Deduction for late delivery)	
C o d e	NE W	T 41		21 (Advertising costs)	
C o d e	NE W	T 41		22 (Customs duties)	
C o	NE W	T 41		23 (Telephone and postal costs)	

d e					
C o d e	NE W	T 41		24 (Repair costs)	
C o d e	NE W	T 41		25 (Attorney fees)	
C o d e	NE W	T 41		26 (Taxes)	
C o d e	NE W	T 41		30 (Direct payment to seller)	
C o d e	NE W	T 41		32 (Goods not delivered)	
C o d e	NE W	T 41		33 (Late delivery)	
C o d e	NE W	T 41		35 (Goods returned)	
C o d e	NE W	T 41		36 (Invoice not received)	
C o d e	NE W	T 41		37 (Credit note to debtor/not to us)	
C o d e	NE W	T 41		38 (Deducted bonus)	
C o d e	NE W	T 41		39 (Deducted discount)	
C o d e	NE W	T 41		40 (Deducted freight costs)	
C o	NE W	T 41		41 (Deduction against other invoices)	

d e					
C o d e	NE W	T 41		42 (Credit balance(s))	
C o d e	NE W	T 41		45 (Debit note to seller)	
C o d e	NE W	T 41		46 (Discount beyond terms)	
C o d e	NE W	T 41		48 (Allowance/charge error)	
C o d e	NE W	T 41		49 (Substitute product)	
C o d e	NE W	T 41		50 (Terms of sale error)	
C o d e	NE W	T 41		52 (Wrong invoice)	
C o d e	NE W	T 41		53 (Duplicate invoice)	
C o d e	NE W	T 41		54 (Weight error)	
C o d e	NE W	T 41		55 (Additional charge not authorized)	
C o d e	NE W	T 41		56 (Incorrect discount)	
C o d e	NE W	T 41		57 (Price change)	
C o	NE W	T 41		58 (Variation)	

d e					
C o d e	NE W	T 41		59 (Chargeback)	
C o d e	NE W	T 41		65 (Settlement to agent)	
C o d e	NE W	T 41		66 (Cash discount)	
C o d e	NE W	T 41		70 (Wrong monetary amount resulting from incorrect free goods quantity)	
C o d e	NE W	T 41		72 (Temporary special promotion)	
C o d e	NE W	T 41		73 (Difference in tax rate)	
C o d e	NE W	T 41		74 (Quantity discount)	
C o d e	NE W	T 41		75 (Promotion discount)	
C o d e	NE W	T 41		76 (Cancellation deadline passed)	
C o d e	NE W	T 41		77 (Pricing discount)	
C o d e	NE W	T 41		78 (Volume discount)	
C o d e	NE W	T 41		79 (Sundry discount)	
T a	UP DA	T 41	type of Allowan		Generalities Old value: <i>coded specification of an Allo</i>

bl e	TE D		ce or Ch arge		<i>wance or Charge</i> New value: <i>coded specification of an Allowance or Charge (elaborated from UNE CE 4465)</i>
C o d e	NE W	T 44		CO (company identification code)	