



<http://www.ebiz-tcf.eu>

## IMPLEMENTATION GUIDE

includes COMPARISON BETWEEN CURRENT and LAST  
PREVIOUSLY RELEASED VERSION  
TRANSACTION "RAW MATERIAL DYEING COMMISSION  
ORDER"

Version: v2018-1

Date of release: 18/7/2019

Document code: G046rv

technical Documentation: <http://www.ebiz.enea.it>

XML Schemas repository: <http://www.ebiz.enea.it/moda-ml/repository/schema/v2018-1/default.asp>

Guides repository: <http://www.ebiz.enea.it/moda-ml/repository/guide/v2018-1/default.asp>

Guide filename: G046rv-eBIZ-RawMaterialDyeingCommissionOrder.pdf

# 1. BUSINESS DESCRIPTION

## 1.1 Scope

The present guide has been issued to assist the companies of the Textile-Clothing sector in the implementation of the standard XML document type "RAW MATERIAL DYEING COMMISSION ORDER", providing all the instruction required for its use in the context of e-commerce between Dyeing Subcontractors and their Customers shown in the enclosed diagram

All the rules required for the construction and validation of the document are embedded into the specific XML-Schema, which is detailed in section "Implementation guide".

## 1.2 Generalities

The Raw material Dyeing commission order is used by a Yarn Producer to commit to a Subcontractor the dyeing of a raw material required to transform the material into yarn usable for fabric production. This work order can include one or several operations of the dyeing cycle.

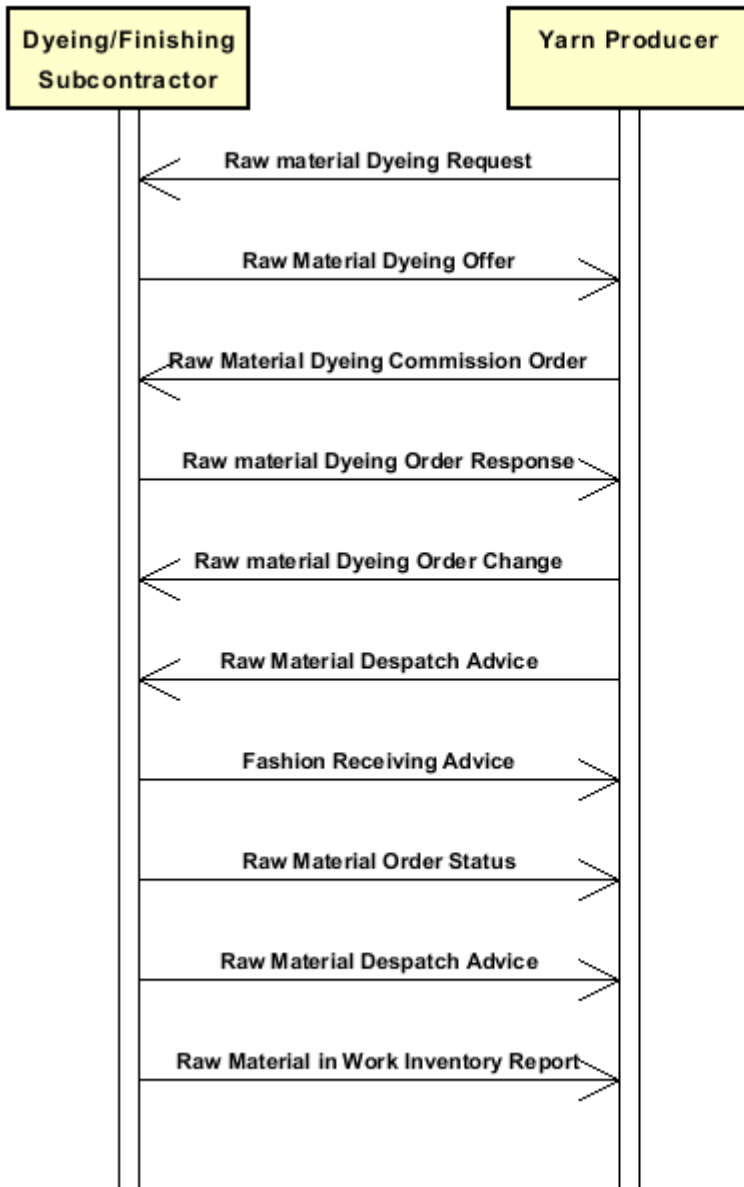
When the Issuer of the Commission requires different manufacturing operations in sequence to different Subcontractors, he can use this document not only as work order but also as a despatch order to send the semi-finished product to a successive Subcontractor

As a general rule, the Raw material dyeing commission order specifies only the characteristics of the end product of each operation and specifies the components used to manufacture that product

It must be noted that this end product can be, in turn, a component for a successive manufacturing operation

## 1.3. Possible scenario

Subcontracted dyeing of raw material



## 2. IMPLEMENTATION GUIDE

### 2.1 General structure of XML document

All the business data that can be exchanged through this class of documents are shown in the following "document structure", that provides a simplified vision of the Schema.

In particular:

- the two numbers following each element define its "cardinality" (minimum and maximum number of occurrences); the minimum equal zero indicates that the element is optional, the minimum greater than zero indicates that is mandatory;
- the bold character denotes the complex elements (aggregates of simple elements) that were built for the sake of functionality and re-usability of some complex informations sets. The child elements in each parent element are easily spotted as "indented";
- the symbol "@" denotes an attribute of the preceding element; here "the usage indicator (optional, required, ...)" is shown in square brackets.

#### Legenda

- N: new element
- U: updated properties
- P: changes in children
- p: is a changed child
- A: changes in attributes
- a: is a new or changed attribute
- \*: is a subtype

### Structure

#### RAWDyeOrder

@msgfunction [Optional] [Default= OR]

@version [Optional] [Default= 2018-1]

@useProfile [Optional]

```
| RDCOheader 1-1 (P)
| | msgN 1-1
| | - choose -
| | msgID 0-1
| | - or -
| | docID 0-1
| | @numberingOrg [Optional]
| | - end choose -
| | msgDate 1-1
| | @dateForm [Optional]
| | season 0-1 (A)
| | @numberingOrg [Optional] (a)
| | @codeList [Optional] (a)
| | @listName [Optional] (a)
| | @listVersion [Optional] (a)
| | msgCurrency 0-1
| | refDoc 0-9 (P)
| | @docType [Required]
| | | docID 1-2 (p)
| | | @numberingOrg [Optional]
| | | docDate 0-1
| | | @dateForm [Optional]
| | | season 0-1 (A)
| | | @numberingOrg [Optional] (a)
| | | @codeList [Optional] (a)
| | | @listName [Optional] (a)
```

| @listVersion [Optional] (a)  
 | itemID 0-1 (U)  
 | **attachment 0-1 (N)**  
 | @uid [Optional]  
 | | fileName 0-1 (N)  
 | | @numberingOrg [Optional] (a)  
 | | binaryObject 0-1 (N)  
 | | @format [Optional] (N)  
 | | @mime [Optional] (N)  
 | | @encoding [Optional] (N)  
 | | @characterSet [Optional] (N)  
 | | **externalReference 0-99 (N)**  
 | | | uri 1-1 (N)  
 | | | @isURL [Optional] [Default= true] (Na)  
 | | | mimeTypeCode 0-1 (N)  
 | | | formatCode 0-1 (N)  
 | | | encodingCode 0-1 (N)  
 | | | characterSetCode 0-1 (N)  
 | **buyer 1-1 (AP)**  
 | @logo [Optional]  
 | @sender [Optional] (a\*)  
 | | id 1-1 (p)  
 | | @numberingOrg [Optional]  
 | | additionalIdentifier 0-9 (N)  
 | | @numberingOrg [Optional] (a)  
 | | @idQualifier [Optional] (Na)  
 | | legalName 0-1 (U)  
 | | dept 0-1  
 | | subDept 0-1 (N)  
 | | person 0-1  
 | | @email [Optional]  
 | | @phone [Optional]  
 | | @fax [Optional]  
 | | street 0-1  
 | | city 0-1  
 | | subCountry 0-1  
 | | country 0-1  
 | | postCode 0-1  
 | **subContractor 1-1 (AP)**  
 | @sender [Optional] (a\*)  
 | | id 1-1  
 | | @numberingOrg [Optional]  
 | | legalName 0-1 (U)  
 | | dept 0-1  
 | | subDept 0-1 (N)  
 | | person 0-1  
 | | @email [Optional]  
 | | @phone [Optional]  
 | | @fax [Optional]  
 | | street 0-1  
 | | city 0-1  
 | | subCountry 0-1  
 | | country 0-1  
 | | postCode 0-1  
 | **thirdParty 0-5 (AP)**  
 | @VAT [Optional]  
 | @role [Required]  
 | @sender [Optional] (a\*)  
 | | id 1-1  
 | | @numberingOrg [Optional]  
 | | legalName 0-1 (U)

- | | dept 0-1
- | | subDept 0-1 (N)
- | | person 0-1
- | | @email [Optional]
- | | @phone [Optional]
- | | @fax [Optional]
- | | street 0-1
- | | city 0-1
- | | subCountry 0-1
- | | country 0-1
- | | postCode 0-1
- | note 0-99
- | @numberingOrg [Optional]
- | @codeList [Optional]
- | @noteLabel [Optional]

| **terms 0-1 (P)**

- | | **payment 0-5**
- | | @finDiscount [Optional]
- | | @finSurcharge [Optional]
- | | - choose -
- | | | payTerm 1-1
- | | | - or -
- | | | payTermText 1-1 (U)
- | | | - end choose -
- | | | payMode 0-1

- | | **insPayment 0-5**
- | | @part [Required]
- | | - choose -
- | | | payTerm 1-1
- | | | - or -
- | | | payTermText 1-1 (U)
- | | | - end choose -
- | | | payMode 0-1

- | | **trade 0-1**
- | | - choose -
- | | | incoTermText 1-1 (U)
- | | | - or -
- | | | incoTerm 1-1
- | | | - end choose -
- | | | location 0-1
- | | | @LRI [Optional]

- | | **transInfo 0-5 (pAP)**
- | | @transReason [Optional]
- | | @progr [Optional] (N)
- | | transMode 1-1
- | | carrier 0-1
- | | deliveryPlace 0-1 (U)
- | | grossWeight 0-1
- | | @um [Required]
- | | netWeight 0-1
- | | @um [Required]
- | | transMeans 0-1
- | | transCondition 0-3
- | | transConditionText 0-1 (U)
- | | despatchPlace 0-1 (N)
- | | despatchDate 0-1 (N)
- | | @dateForm [Optional] (a)
- | | delEffectiveDate 0-1 (p)
- | | @dateForm [Optional]

- | | **allowanceCharge 0-9 (A)**

```

| | @um [Optional] (a)
| | @VAT [Optional]
| | @minQty [Optional] (a)
| | @currency [Optional] (a)
| | @maxQty [Optional] (N)
| | @isCharge [Optional] (N)
| | - choose -
| | | AC_category 1-1
| | - or -
| | | AC_categoryText 1-1 (U)
| | - end choose -
| | - choose -
| | | AC_percent 1-1
| | - or -
| | | AC_amount 1-1 (A)
| | | @currency [Optional] (a)
| | - end choose -
| | | dtScheme 0-1 (P)
| | | @taxType [Required]
| | | taxCategory 0-1
| | | taxRate 0-1
| | | legalRef 0-1 (A)
| | | @numberingOrg [Optional]
| | | @codeList [Optional]
| | | @listName [Optional]
| | | @listVersion [Optional]
| | | note 0-99
| | | @numberingOrg [Optional]
| | | @codeList [Optional]
| | | @noteLabel [Optional]

```

#### RDCObody 1-1

```

| | RDCOitem 1-unbounded (P)
| | @productLevel [Optional] [Default= END]
| | lineN 1-1
| | @VAT [Optional]
| | rawProd 1-1 (P)
| | @CTest [Optional]
| | | rawCode 1-1 (P)
| | | @numberingOrg [Optional]
| | | | art 1-1 (U)
| | | | @numberingOrg [Optional]
| | | | @codeList [Optional]
| | | | @listName [Optional]
| | | | @listVersion [Optional]
| | | | color 0-1
| | | | @numberingOrg [Optional]
| | | | @codeList [Optional]
| | | | @listName [Optional]
| | | | @listVersion [Optional]
| | | | added 0-9
| | | | @numberingOrg [Optional]
| | | | @addType [Optional]
| | | | description 0-unbounded (AU)
| | | | @ln [Optional] (N)
| | | rawSpecs 0-9
| | | - choose -
| | | | rawCharText 1-1 (U)
| | | - or -
| | | | rawChar 1-1
| | | - end choose -

```

```

| | | | specValue 0-1
| | | |   @um [Optional]
| | | |   @source [Optional]
| | | |   @method [Optional]
| | | |   @application [Optional]
| | | |   @CV [Optional]
| | | | - choose -
| | | |   pcTolerance 0-2
| | | |   @um [Optional]
| | | | - or -
| | | |   tolerance 0-2
| | | |   @um [Required]
| | | | - end choose -
| | | | lotN 0-1
| | | |   @numberingOrg [Optional]
| | | | dyeN 0-1
| | | |   @numberingOrg [Optional]
| | | | note 0-99
| | | |   @numberingOrg [Optional]
| | | |   @codeList [Optional]
| | | |   @noteLabel [Optional]
| | | | qty 1-2
| | | |   @um [Required]
| | | | price 0-1 (AU)
| | | |   @um [Optional]
| | | |   @priceQualifier [Optional] [Default= NET]
| | | |   @currency [Optional] (a)
| | | | deliveryDate 0-1
| | | |   @dateForm [Optional]
| | | | thirdParty 0-3 (AP)
| | | |   @VAT [Optional]
| | | |   @role [Required]
| | | |   @sender [Optional] (a*)
| | | |   | id 1-1
| | | |   |   @numberingOrg [Optional]
| | | |   | legalName 0-1 (U)
| | | |   | dept 0-1
| | | |   | subDept 0-1 (N)
| | | |   | person 0-1
| | | |   |   @email [Optional]
| | | |   |   @phone [Optional]
| | | |   |   @fax [Optional]
| | | |   | street 0-1
| | | |   | city 0-1
| | | |   | subCountry 0-1
| | | |   | country 0-1
| | | |   | postCode 0-1
| | | | rawComponent 1-9 (P)
| | | |   @CQQ [Optional]
| | | |   | pcQty 0-1
| | | |   |   @um [Optional]
| | | |   | rawCode 1-1 (P)
| | | |   |   @numberingOrg [Optional]
| | | |   |   | art 1-1 (U)
| | | |   |   |   @numberingOrg [Optional]
| | | |   |   |   @codeList [Optional]
| | | |   |   |   @listName [Optional]
| | | |   |   |   @listVersion [Optional]
| | | |   |   | color 0-1
| | | |   |   |   @numberingOrg [Optional]
| | | |   |   |   @codeList [Optional]

```



```

| | | | @listName [Optional]
| | | | @listVersion [Optional]
| | | | added 0-9
| | | | @numberingOrg [Optional]
| | | | @addType [Optional]
| | | | description 0-unbounded (AU)
| | | | @ln [Optional] (N)
| | | | lotN 0-1
| | | | @numberingOrg [Optional]
| | | | dyeN 0-1
| | | | @numberingOrg [Optional]
| | | | qty 1-2
| | | | @um [Required]
| | | | refDoc 0-9 (P)
| | | | @docType [Required]
| | | | | docID 1-2 (p)
| | | | | @numberingOrg [Optional]
| | | | | docDate 0-1
| | | | | @dateForm [Optional]
| | | | | season 0-1 (A)
| | | | | @numberingOrg [Optional] (a)
| | | | | @codeList [Optional] (a)
| | | | | @listName [Optional] (a)
| | | | | @listVersion [Optional] (a)
| | | | | itemID 0-1 (U)
| | | | | attachment 0-1 (N)
| | | | | @uid [Optional]
| | | | | | fileName 0-1 (N)
| | | | | | @numberingOrg [Optional] (a)
| | | | | | binaryObject 0-1 (N)
| | | | | | @format [Optional] (Na)
| | | | | | @mime [Optional] (Na)
| | | | | | @encoding [Optional] (Na)
| | | | | | @characterSet [Optional] (Na)
| | | | | | externalReference 0-99 (N)
| | | | | | | uri 1-1 (N)
| | | | | | | @isURL [Optional] [Default= true] (Na)
| | | | | | | mimeTypeCode 0-1 (N)
| | | | | | | formatCode 0-1 (N)
| | | | | | | encodingCode 0-1 (N)
| | | | | | | characterSetCode 0-1 (N)
| | | | | location 0-1
| | | | | @LRI [Optional]
| | | | | note 0-99
| | | | | @numberingOrg [Optional]
| | | | | @codeList [Optional]
| | | | | @noteLabel [Optional]
| | | | rawMnfrOperation 1-9 (P)
| | | | - choose -
| | | | | rawJob 1-1
| | | | - or -
| | | | | jobName 1-1
| | | | - end choose -
| | | | | refDoc 0-9 (P)
| | | | | @docType [Required]
| | | | | | docID 1-2
| | | | | | @numberingOrg [Optional]
| | | | | | docDate 0-1
| | | | | | @dateForm [Optional]
| | | | | | season 0-1 (A)
| | | | | | @numberingOrg [Optional] (a)

```

```

| | | | @codeList [Optional] (a)
| | | | @listName [Optional] (a)
| | | | @listVersion [Optional] (a)
| | | | itemID 0-1 (U)
| | | | attachment 0-1 (N)
| | | | @uid [Optional]
| | | | | fileName 0-1 (N)
| | | | | @numberingOrg [Optional] (a)
| | | | | binaryObject 0-1 (N)
| | | | | @format [Optional] (Na)
| | | | | @mime [Optional] (Na)
| | | | | @encoding [Optional] (Na)
| | | | | @characterSet [Optional] (Na)
| | | | | externalReference 0-99 (N)
| | | | | | uri 1-1 (N)
| | | | | | @isURL [Optional] [Default= true] (Na)
| | | | | | mimeTypeCode 0-1 (N)
| | | | | | formatCode 0-1 (N)
| | | | | | encodingCode 0-1 (N)
| | | | | | characterSetCode 0-1 (N)
| | | | note 0-99
| | | | @numberingOrg [Optional]
| | | | @codeList [Optional]
| | | | @noteLabel [Optional]
| | | | dtScheme 0-1 (P)
| | | | @taxType [Required]
| | | | | taxCategory 0-1
| | | | | taxRate 0-1
| | | | | legalRef 0-1 (A)
| | | | | @numberingOrg [Optional] (a)
| | | | | @codeList [Optional] (a)
| | | | | @listName [Optional] (a)
| | | | | @listVersion [Optional] (a)
| | | | | note 0-99
| | | | | @numberingOrg [Optional]
| | | | | @codeList [Optional]
| | | | | @noteLabel [Optional]
| | | | note 0-99
| | | | @numberingOrg [Optional]
| | | | @codeList [Optional]
| | | | @noteLabel [Optional]

```

## 2.2 Detailed description of document elements

Following tables show all elements (complex and simple) used in this document. Description includes: 1) element's information: xml tag, name, brief description, data type and syntax constraints; 2) information about use of the element in a particular position in the document: xpath and possible associated notes.

### 2.2.1 Complex elements (Aggregate Business Information Entities)

Complex elements are those elements whose content is composed of other elements (childs). Complex elements are alphabetically ordered.

<b>allowanceCharge</b>	Allowances and Charges related to an Order or a contract (XPath RAWDyeOrder/terms/allowanceCharge) 0-9 (A)
<b>attachment</b>	an attached document. An attachment can refer to an external document or be included with the document being exchanged (XPath RAWDyeOrder/RDCObody/RDCOitem/rawComponent/refDoc/attachment) 0-1 (N) (XPath RAWDyeOrder/RDCOheader/refDoc/attachment) 0-1 (N) (XPath RAWDyeOrder/RDCObody/RDCOitem/rawMnfrOperation/refDoc/attachment) 0-1 (N)
<b>buyer</b>	details of the Buyer (party that buys the good or service that is object of the current collaborative process) - base type: Nad, (XPath RAWDyeOrder/RDCOheader/buyer) 1-1 (AP)
<b>dtScheme</b>	set of data usable to declare the duty or tax applied (XPath RAWDyeOrder/RDCObody/RDCOitem/dtScheme) 0-1 (P) (XPath RAWDyeOrder/terms/allowanceCharge/dtScheme) 0-1 (P)
<b>externalReference</b>	details about an external object, such as a document stored at a remote location (XPath RAWDyeOrder/RDCObody/RDCOitem/rawComponent/refDoc/attachment/externalReference) 0-99 (N) (XPath RAWDyeOrder/RDCOheader/refDoc/attachment/externalReference) 0-99 (N) (XPath RAWDyeOrder/RDCObody/RDCOitem/rawMnfrOperation/refDoc/attachment/externalReference) 0-99 (N)
<b>insPayment</b>	payment details for payment by installments (XPath RAWDyeOrder/terms/insPayment) 0-5 - note: <i>excluded the case of offers, this set of data is alternative to payment set and must be iterated for each payment installment</i>
<b>payment</b>	payment details for payment all in one (XPath RAWDyeOrder/terms/payment) 0-5 - note: <i>excluded the case of offers, this set of data is alternative to insPayment, it can be iterated to specify alternative terms of payment (e.g.: 60 days or 30 days with 3% discount)</i>
<b>rawCode</b>	full codification of a raw material (XPath RAWDyeOrder/RDCObody/RDCOitem/rawComponent/rawCode) 1-1 (P) (XPath RAWDyeOrder/RDCObody/RDCOitem/rawProd/rawCode) 1-1 (P)
<b>rawComponent</b>	identification details of a raw material used in a sub-contracted manufacturing operation (XPath RAWDyeOrder/RDCObody/RDCOitem/rawComponent) 1-9 (P)
<b>rawMnfrOperation</b>	details of a manufacturing operation on raw material used for manufacturing a yarn product (XPath RAWDyeOrder/RDCObody/RDCOitem/rawMnfrOperation) 1-9 (P)

	- note: <i>this block of data can be used to specify either a subcontracted operation or an operation assigned to a shop owned by the issuer of the Manufacturing Order. In this latter case the specifications can be completed with "machine data"</i>
<b>rawProd</b>	manufacturing specifications of the raw product to be obtained from an operation of the sub-contracted production (XPath RAWDyeOrder/RDCObody/RDCOitem/rawProd) 1-1 (P)
<b>rawSpecs</b>	technical characteristics of a raw material linked to an operation of the sub-contracted production of yarn or to the purchase of yarn (XPath RAWDyeOrder/RDCObody/RDCOitem/rawProd/rawSpecs) 0-9
<b>RDCObody</b>	body of the document RAW MATERIAL DYEING COMMISSION ORDER (XPath RAWDyeOrder/RDCObody) 1-1
<b>RDCOheader</b>	header of the document RAW MATERIAL DYEING COMMISSION ORDER (XPath RAWDyeOrder/RDCOheader) 1-1 (P)
<b>RDCOitem</b>	line of the document RAW MATERIAL DYEING COMMISSION ORDER (XPath RAWDyeOrder/RDCObody/RDCOitem) 1-unbounded (P)
<b>refDoc</b>	identification of a document and of an item thereof, to which the message makes reference (XPath RAWDyeOrder/RDCObody/RDCOitem/rawComponent/refDoc) 0-9 (P) (XPath RAWDyeOrder/RDCObody/RDCOitem/rawMnfrOperation/refDoc) 0-9 (P) (XPath RAWDyeOrder/RDCOheader/refDoc) 0-9 (P)
<b>subContractor</b>	details of the Sub-contractor - base type: Nad, (XPath RAWDyeOrder/RDCOheader/subContractor) 1-1 (AP)
<b>terms</b>	details of the commercial obligations for payment and delivery (XPath RAWDyeOrder/terms) 0-1 (P)
<b>thirdParty</b>	details of the Third Party, different from Sender and Receiver of the document - base type: Nad, (XPath RAWDyeOrder/RDCOheader/thirdParty) 0-5 (AP) - note: <i>here the Party to whom the Subcontractor must send the semi-finished products for subsequent operations can be specified</i> (XPath RAWDyeOrder/RDCObody/RDCOitem/thirdParty) 0-3 (AP) - note: <i>here the Party to whom the Subcontractor must send the semi-finished product for subsequent operations can be specified</i>
<b>trade</b>	general terms of trade for the specified supply (XPath RAWDyeOrder/terms/trade) 0-1
<b>transInfo</b>	details of transport: mode, carrier and delivery place (XPath RAWDyeOrder/terms/transInfo) 0-5 (pAP)

## 2.2.2 Simple elements (Basic Business Information Entities)

Simple elements are those elements whose content is characterized by a data type plus a domain of possible values. Simple elements are alphabetically ordered.

<b>AC_amount</b>	amount of an Allowance or Charge - base type: decimal, fraction digits: 2, (XPath RAWDyeOrder/terms/allowanceCharge/AC_amount) 1-1 (A)
<b>AC_category</b>	coded specification of an Allowance or Charge - base type: string, cod. table: T41 <a href="http://www.ebiz.enea.it/moda-ml/repository/codelist/v2018-1/gc_T41.xml">http://www.ebiz.enea.it/moda-ml/repository/codelist/v2018-1/gc_T41.xml</a> (XPath RAWDyeOrder/terms/allowanceCharge/AC_category) 1-1

AC_categoryText	free text description of an Allowance or Charge - base type: string, max length: 250, (XPath RAWDyeOrder/terms/allowanceCharge/AC_categoryText) 1-1 (U)
AC_percent	amount of an Allowance or Charge as a percentage (always non negative value) - base type: decimal, max inclusive: 100, fraction digits: 2, (XPath RAWDyeOrder/terms/allowanceCharge/AC_percent) 1-1
added	additional code of the product (complementing the formers) - base type: string, max length: 80, (XPath RAWDyeOrder/RDCObody/RDCOitem/rawComponent/rawCode/added) 0-9 (XPath RAWDyeOrder/RDCObody/RDCOitem/rawProd/rawCode/added) 0-9
additionalIdentifier	additional identification code of a Party, for example customs registries or others - base type: string, max length: 15, (XPath RAWDyeOrder/RDCOheader/buyer/additionalIdentifier) 0-9 (N) - note: <i>identifiers for example for exports, such as MID (Manufacturer Identification Code), EORI (E.O.R.I. - Economic Operator Registration and Identification)</i>
@addType	qualifier of the additional coding of a product - base type: string, cod. table: T44 <a href="http://www.ebiz.enea.it/moda-ml/repository/codelist/v2018-1/gc_T44.xml">http://www.ebiz.enea.it/moda-ml/repository/codelist/v2018-1/gc_T44.xml</a> (XPath RAWDyeOrder/RDCObody/RDCOitem/rawComponent/rawCode/added/@addType) [Optional] - nota: <i>addType allows the clarification of the meaning of the added element content; it is strongly suggested to use it always.</i> (XPath RAWDyeOrder/RDCObody/RDCOitem/rawProd/rawCode/added/@addType) [Optional] - nota: <i>addType allows the clarification of the meaning of the added element content; it is strongly suggested to use it always.</i>
@application	force or similar condition (e.g. no. of revolutions) applied in a test as specified within the standard - base type: string, max length: 15, (XPath RAWDyeOrder/RDCObody/RDCOitem/rawProd/rawSpecs/specValue/@application) [Optional]
art	article number of the product - base type: string, max length: 80, (XPath RAWDyeOrder/RDCObody/RDCOitem/rawProd/rawCode/art) 1-1 (U) (XPath RAWDyeOrder/RDCObody/RDCOitem/rawComponent/rawCode/art) 1-1 (U)
binaryObject	a binary large object containing an attached document, Coding 'base64Binary' is recommended. - base type: base64Binary, (XPath RAWDyeOrder/RDCObody/RDCOitem/rawComponent/refDoc/attachment/binaryObject) 0-1 (N) (XPath RAWDyeOrder/RDCOheader/refDoc/attachment/binaryObject) 0-1 (N) (XPath RAWDyeOrder/RDCObody/RDCOitem/rawMnfrOperation/refDoc/attachment/binaryObject) 0-1 (N)
carrier	identification of the transport carrier - base type: string, max length: 40, (XPath RAWDyeOrder/terms/transInfo/carrier) 0-1
@characterSet	the character set of the binary object (examples UTF-8, UTF-16, Windows-1252, ISO-8859-7,...) - base type: normalizedString, (XPath RAWDyeOrder/RDCObody/RDCOitem/rawMnfrOperation/refDoc/attachment/binaryObject/@characterSet) [Optional] (Na) (XPath RAWDyeOrder/RDCObody/RDCOitem/rawComponent/refDoc/attachment/binaryObject/@characterSet) [Optional] (Na)

	(XPath RAWDyeOrder/RDCOheader/refDoc/attachment/binaryObject/@characterSet) [Optional] (N)
characterSetCode	<p>the character set of an external document (examples UTF-8, UTF-16, Windows-1252, ISO-8859-7,..)</p> <p>- base type: normalizedString,</p> <p>(XPath RAWDyeOrder/RDCObody/RDCOitem/rawMnfrOperation/refDoc/attachment/externalReference/characterSetCode) 0-1 (N)</p> <p>(XPath RAWDyeOrder/RDCOheader/refDoc/attachment/externalReference/characterSetCode) 0-1 (N)</p> <p>(XPath RAWDyeOrder/RDCObody/RDCOitem/rawComponent/refDoc/attachment/externalReference/characterSetCode) 0-1 (N)</p>
city	<p>name of the city (town, village)</p> <p>- base type: string, max length: 40,</p> <p>(XPath RAWDyeOrder/RDCOheader/subContractor/city) 0-1</p> <p>(XPath RAWDyeOrder/RDCOheader/buyer/city) 0-1</p> <p>(XPath RAWDyeOrder/RDCObody/RDCOitem/thirdParty/city) 0-1</p> <p>(XPath RAWDyeOrder/RDCOheader/thirdParty/city) 0-1</p>
@codeList	<p>it specifies the URL where the list of codes used to make an instance of the element can be found</p> <p>- base type: string, max length: 255,</p> <p>(XPath RAWDyeOrder/RDCObody/RDCOitem/rawMnfrOperation/note/@codeList) [Optional]</p> <p>- nota: <i>must be used to provide (URL) the list of codes used in "noteLabel"</i></p> <p>(XPath RAWDyeOrder/RDCOheader/note/@codeList) [Optional]</p> <p>- nota: <i>must be used to provide (URL) the list of codes used in "noteLabel"</i></p> <p>(XPath RAWDyeOrder/RDCObody/RDCOitem/note/@codeList) [Optional]</p> <p>- nota: <i>must be used to provide (URL) the list of codes used in "noteLabel"</i></p> <p>(XPath RAWDyeOrder/RDCObody/RDCOitem/dtScheme/legalRef/@codeList) [Optional] (a)</p> <p>(XPath RAWDyeOrder/RDCObody/RDCOitem/dtScheme/note/@codeList) [Optional]</p> <p>- nota: <i>must be used to provide (URL) the list of codes used in "noteLabel"</i></p> <p>(XPath RAWDyeOrder/RDCObody/RDCOitem/rawProd/rawCode/color/@codeList) [Optional]</p> <p>- nota: <i>this attribute should be used either single or coupled with "listName" and "listVersion"</i></p> <p>(XPath RAWDyeOrder/terms/allowanceCharge/dtScheme/note/@codeList) [Optional]</p> <p>- nota: <i>must be used to provide (URL) the list of codes used in "noteLabel"</i></p> <p>(XPath RAWDyeOrder/terms/allowanceCharge/dtScheme/legalRef/@codeList) [Optional]</p> <p>(XPath RAWDyeOrder/RDCObody/RDCOitem/rawComponent/rawCode/art/@codeList) [Optional]</p> <p>- nota: <i>at least one out of this attribute and "numberingOrg" should be set</i></p> <p>(XPath RAWDyeOrder/RDCObody/RDCOitem/rawComponent/rawCode/color/@codeList) [Optional]</p> <p>- nota: <i>this attribute should be used either single or coupled with "listName" and "listVersion"</i></p> <p>(XPath RAWDyeOrder/RDCObody/RDCOitem/rawComponent/refDoc/season/@codeList) [Optional] (a)</p> <p>- nota: <i>this attribute should be used either single or coupled with "listName" and "listVersion"</i></p> <p>(XPath RAWDyeOrder/RDCObody/RDCOitem/rawMnfrOperation/refDoc/season/@codeList) [Optional] (a)</p> <p>- nota: <i>this attribute should be used either single or coupled with "listName" and "listVersion"</i></p> <p>(XPath RAWDyeOrder/RDCObody/RDCOitem/rawProd/rawCode/art/@codeList) [Optional]</p> <p>- nota: <i>at least one out of this attribute and "numberingOrg" should be set</i></p> <p>(XPath RAWDyeOrder/RDCObody/RDCOitem/rawProd/note/@codeList) [Optional]</p> <p>- nota: <i>must be used to provide (URL) the list of codes used in "noteLabel"</i></p> <p>(XPath RAWDyeOrder/RDCObody/RDCOitem/rawComponent/note/@codeList) [Optional]</p> <p>- nota: <i>must be used to provide (URL) the list of codes used in "noteLabel"</i></p>

	<p>(XPath RAWDyeOrder/RDCOheader/refDoc/season/@codeList) [Optional] (a)  - nota: <i>this attribute should be used either single or coupled with "listName" and "listVersion"</i></p> <p>(XPath RAWDyeOrder/RDCOheader/season/@codeList) [Optional] (a)  - nota: <i>this attribute should be used either single or coupled with "listName" and "listVersion"</i></p>
color	<p>colour number of the product, when not included in the model or fabric code  - base type: string, max length: 15,  (XPath RAWDyeOrder/RDCObody/RDCOitem/rawComponent/rawCode/color) 0-1  (XPath RAWDyeOrder/RDCObody/RDCOitem/rawProd/rawCode/color) 0-1</p>
country	<p>code of the nation  - base type: string, cod. table: T10  <a href="http://www.ebiz.enea.it/moda-ml/repository/codelist/v2018-1/gc_T10.xml">http://www.ebiz.enea.it/moda-ml/repository/codelist/v2018-1/gc_T10.xml</a>  (XPath RAWDyeOrder/RDCObody/RDCOitem/thirdParty/country) 0-1  (XPath RAWDyeOrder/RDCOheader/subContractor/country) 0-1  (XPath RAWDyeOrder/RDCOheader/buyer/country) 0-1  (XPath RAWDyeOrder/RDCOheader/thirdParty/country) 0-1</p>
@CQQ	<p>specifies if the committed quantity can or can not include the loss in weight  - base type: string, cod. table: NT37  <a href="http://www.ebiz.enea.it/moda-ml/repository/codelist/v2018-1/gc_NT37.xml">http://www.ebiz.enea.it/moda-ml/repository/codelist/v2018-1/gc_NT37.xml</a>  (XPath RAWDyeOrder/RDCObody/RDCOitem/rawComponent/@CQQ) [Optional]</p>
@CTest	<p>indicates the need to execute a colour test before the operation  - base type: string, cod. table: NT38  <a href="http://www.ebiz.enea.it/moda-ml/repository/codelist/v2018-1/gc_NT38.xml">http://www.ebiz.enea.it/moda-ml/repository/codelist/v2018-1/gc_NT38.xml</a>  (XPath RAWDyeOrder/RDCObody/RDCOitem/rawProd/@CTest) [Optional]</p>
@currency	<p>currency in which a specified monetary data is expressed  - base type: string, cod. table: T9  <a href="http://www.ebiz.enea.it/moda-ml/repository/codelist/v2018-1/gc_T9.xml">http://www.ebiz.enea.it/moda-ml/repository/codelist/v2018-1/gc_T9.xml</a>  (XPath RAWDyeOrder/terms/allowanceCharge/AC_amount/@currency) [Optional] (a)  (XPath RAWDyeOrder/RDCObody/RDCOitem/price/@currency) [Optional] (a)  - nota: <i>Currency referred by the price.</i>  (XPath RAWDyeOrder/terms/allowanceCharge/@currency) [Optional] (a)</p>
@CV	<p>coefficient of variation (CV) of a measurement  - base type: decimal,  (XPath RAWDyeOrder/RDCObody/RDCOitem/rawProd/rawSpecs/specValue/@CV) [Optional]</p>
@dateForm	<p>format used for the date  - base type: string, cod. table: NT29  <a href="http://www.ebiz.enea.it/moda-ml/repository/codelist/v2018-1/gc_NT29.xml">http://www.ebiz.enea.it/moda-ml/repository/codelist/v2018-1/gc_NT29.xml</a>  (XPath RAWDyeOrder/RDCObody/RDCOitem/rawMnfrOperation/refDoc/docDate/@dateForm) [Optional]  (XPath RAWDyeOrder/RDCOheader/refDoc/docDate/@dateForm) [Optional]  (XPath RAWDyeOrder/terms/transInfo/delEffectiveDate/@dateForm) [Optional]  (XPath RAWDyeOrder/RDCObody/RDCOitem/rawComponent/refDoc/docDate/@dateForm) [Optional]  (XPath RAWDyeOrder/RDCObody/RDCOitem/deliveryDate/@dateForm) [Optional]  (XPath RAWDyeOrder/RDCOheader/msgDate/@dateForm) [Optional]  (XPath RAWDyeOrder/terms/transInfo/despatchDate/@dateForm) [Optional] (a)</p>
delEffectiveDate	<p>effective date of delivery of goods (declared in Despatch), according to one of the patterns YYYY-MM-DD, YYYY-MM-DD:HH-MM or YYYY-WW.  - base type: string,  (XPath RAWDyeOrder/terms/transInfo/delEffectiveDate) 0-1 (p)</p>
deliveryDate	<p>date of delivery of goods, requested or promised in the purchase process, according to one of the patterns YYYY-MM-DD, YYYY-MM-DD:HH-MM or YY YY-WW.  - base type: string,  (XPath RAWDyeOrder/RDCObody/RDCOitem/deliveryDate) 0-1</p>

deliveryPlace	place of delivery of goods, ultimate or related to a given leg - base type: string, max length: 250, (XPath RAWDyeOrder/terms/transInfo/deliveryPlace) 0-1 (U)
dept	name or code of a contact department within a Party - base type: string, max length: 40, (XPath RAWDyeOrder/RDCOheader/subContractor/dept) 0-1 (XPath RAWDyeOrder/RDCObody/RDCOitem/thirdParty/dept) 0-1 (XPath RAWDyeOrder/RDCOheader/thirdParty/dept) 0-1 (XPath RAWDyeOrder/RDCOheader/buyer/dept) 0-1
description	free text description. The content of the element must be unique, it might be translated and repeated into more languages (thus no more than one instance for each language). - base type: string, max length: 250, (XPath RAWDyeOrder/RDCObody/RDCOitem/rawComponent/rawCode/description) 0-unbounded (AU) - note: <i>Raw material description</i> (XPath RAWDyeOrder/RDCObody/RDCOitem/rawProd/rawCode/description) 0-unbounded (AU) - note: <i>Raw material description</i>
despatchDate	date of despatch of goods, requested or promised in the purchase process, according to one of the patterns YYYY-MM-DD, YYYY-MM-DD:HH-MM or YYYY-WW. - base type: string, (XPath RAWDyeOrder/terms/transInfo/despatchDate) 0-1 (N)
despatchPlace	place of despatch of goods, origin or related to a given leg - base type: string, max length: 250, (XPath RAWDyeOrder/terms/transInfo/despatchPlace) 0-1 (N)
docDate	date of issue of the referenced document, according to one of the patterns YYYY-MM-DD, YYYY-MM-DD:HH-MM or YYYY-WW. - base type: string, (XPath RAWDyeOrder/RDCOheader/refDoc/docDate) 0-1 (XPath RAWDyeOrder/RDCObody/RDCOitem/rawComponent/refDoc/docDate) 0-1 (XPath RAWDyeOrder/RDCObody/RDCOitem/rawMnfrOperation/refDoc/docDate) 0-1
docID	identification number of the referenced document SINCE 2008-1 ITS USE IN THE HEADER IS DISCOURAGED (REPLACED BY msgID) - base type: string, max length: 80, (XPath RAWDyeOrder/RDCOheader/refDoc/docID) 1-2 (p) <hr/> AAAA-WARNING! - text not AVAILABLE n. 245 - In=en (XPath RAWDyeOrder/RDCOheader/docID) 0-1 (XPath RAWDyeOrder/RDCObody/RDCOitem/rawComponent/refDoc/docID) 1-2 (p) <hr/> AAAA-WARNING! - text not AVAILABLE n. 245 - In=en (XPath RAWDyeOrder/RDCObody/RDCOitem/rawMnfrOperation/refDoc/docID) 1-2 <hr/> AAAA-WARNING! - text not AVAILABLE n. 245 - In=en
@docType	type or class to which the referenced document belongs - base type: string, cod. table: T21 <a href="http://www.ebiz.enea.it/moda-ml/repository/codelist/v2018-1/gc_T21.xml">http://www.ebiz.enea.it/moda-ml/repository/codelist/v2018-1/gc_T21.xml</a> (XPath RAWDyeOrder/RDCObody/RDCOitem/rawComponent/refDoc/@docType) [Required] (XPath RAWDyeOrder/RDCOheader/refDoc/@docType) [Required] (XPath RAWDyeOrder/RDCObody/RDCOitem/rawMnfrOperation/refDoc/@docType) [Required]
dyeN	number of the dyeing batch of a textile product - base type: string, max length: 15, (XPath RAWDyeOrder/RDCObody/RDCOitem/rawComponent/dyeN) 0-1



	(XPath RAWDyeOrder/RDCObody/RDCOitem/rawProd/dyeN) 0-1
@email	<p>electronic mail address of the contact person within a Party</p> <p>- base type: string, max length: 250,</p> <p>(XPath RAWDyeOrder/RDCOheader/subContractor/person/@email) [Optional]</p> <p>(XPath RAWDyeOrder/RDCOheader/buyer/person/@email) [Optional]</p> <p>(XPath RAWDyeOrder/RDCOheader/thirdParty/person/@email) [Optional]</p> <p>(XPath RAWDyeOrder/RDCObody/RDCOitem/thirdParty/person/@email) [Optional]</p>
@encoding	<p>specifies the decoding algorithm of the binary object</p> <p>- base type: normalizedString,</p> <p>(XPath RAWDyeOrder/RDCObody/RDCOitem/rawMnfrOperation/refDoc/attachment/binaryObject/@encoding) [Optional] (Na)</p> <p>(XPath RAWDyeOrder/RDCObody/RDCOitem/rawComponent/refDoc/attachment/binaryObject/@encoding) [Optional] (Na)</p> <p>(XPath RAWDyeOrder/RDCOheader/refDoc/attachment/binaryObject/@encoding) [Optional] (N)</p>
encodingCode	<p>the encoding/decoding algorithm used with the external object (example is 'base64Binary')</p> <p>- base type: normalizedString,</p> <p>(XPath RAWDyeOrder/RDCObody/RDCOitem/rawComponent/refDoc/attachment/externalReference/encodingCode) 0-1 (N)</p> <p>(XPath RAWDyeOrder/RDCObody/RDCOitem/rawMnfrOperation/refDoc/attachment/externalReference/encodingCode) 0-1 (N)</p> <p>(XPath RAWDyeOrder/RDCOheader/refDoc/attachment/externalReference/encodingCode) 0-1 (N)</p>
@fax	<p>fax number of the contact person within a Party</p> <p>- base type: string, max length: 35,</p> <p>(XPath RAWDyeOrder/RDCOheader/subContractor/person/@fax) [Optional]</p> <p>(XPath RAWDyeOrder/RDCObody/RDCOitem/thirdParty/person/@fax) [Optional]</p> <p>(XPath RAWDyeOrder/RDCOheader/thirdParty/person/@fax) [Optional]</p> <p>(XPath RAWDyeOrder/RDCOheader/buyer/person/@fax) [Optional]</p>
fileName	<p>unique identifier (name) of the file</p> <p>- base type: string, max length: 255,</p> <p>(XPath RAWDyeOrder/RDCObody/RDCOitem/rawComponent/refDoc/attachment/fileName) 0-1 (N)</p> <p>(XPath RAWDyeOrder/RDCObody/RDCOitem/rawMnfrOperation/refDoc/attachment/fileName) 0-1 (N)</p> <p>(XPath RAWDyeOrder/RDCOheader/refDoc/attachment/fileName) 0-1 (N)</p>
@finDiscount	<p>financial discount rate applied for payment by the date specified</p> <p>- base type: decimal, min inclusive: 0, max inclusive: 100, fraction digits: 2,</p> <p>(XPath RAWDyeOrder/terms/payment/@finDiscount) [Optional]</p>
@finSurcharge	<p>financial surcharge rate applied for payment after the date specified</p> <p>- base type: decimal, min inclusive: 0, max inclusive: 100, fraction digits: 2,</p> <p>(XPath RAWDyeOrder/terms/payment/@finSurcharge) [Optional]</p>
@format	<p>the format of the binary content (examples xml, pdf, doc,...)</p> <p>- base type: string,</p> <p>(XPath RAWDyeOrder/RDCObody/RDCOitem/rawComponent/refDoc/attachment/binaryObject/@format) [Optional] (Na)</p> <p>(XPath RAWDyeOrder/RDCObody/RDCOitem/rawMnfrOperation/refDoc/attachment/binaryObject/@format) [Optional] (Na)</p> <p>(XPath RAWDyeOrder/RDCOheader/refDoc/attachment/binaryObject/@format) [Optional] (N)</p>
formatCode	<p>the format of the external object (examples xml, pdf, doc,...)</p> <p>- base type: normalizedString,</p> <p>(XPath RAWDyeOrder/RDCOheader/refDoc/attachment/externalReference/formatCode) 0-1 (N)</p> <p>(XPath RAWDyeOrder/RDCObody/RDCOitem/rawMnfrOperation/refDoc/attachment/externalReference/formatCode) 0-1 (N)</p> <p>(XPath RAWDyeOrder/RDCObody/RDCOitem/rawComponent/refDoc/attachment/externalReference/formatCode) 0-1 (N)</p>

grossWeight	the gross weight, declared for transport or customs purpose - base type: decimal, min inclusive: 0, fraction digits: 2, (XPath RAWDyeOrder/terms/transInfo/grossWeight) 0-1
id	primary identification code of a Party; it is recommended the format: nation code (ISO 3166) + VAT identification number (11 crt), with the qualifier "numberingOrg"= MF - base type: string, max length: 15, (XPath RAWDyeOrder/RDCOheader/buyer/id) 1-1 (p) (XPath RAWDyeOrder/RDCOheader/thirdParty/id) 1-1 (XPath RAWDyeOrder/RDCObody/RDCOitem/thirdParty/id) 1-1 (XPath RAWDyeOrder/RDCOheader/subContractor/id) 1-1
@idQualifier	Qualification of the identifier. - base type: string, (XPath RAWDyeOrder/RDCOheader/buyer/additionalIdentifier/@idQualifier) [Optional] (Na) - nota: <i>this attribute should be used when the numberingOrg attribute is not enough to declare the type of identifier</i>
incoTerm	specification of the terms of trade (INCOTERMS) - base type: string, cod. table: T3 <a href="http://www.ebiz.enea.it/moda-ml/repository/codelist/v2018-1/gc_T3.xml">http://www.ebiz.enea.it/moda-ml/repository/codelist/v2018-1/gc_T3.xml</a> (XPath RAWDyeOrder/terms/trade/incoTerm) 1-1
incoTermText	free text specifying the terms of trade (incoterm, location) - base type: string, max length: 250, (XPath RAWDyeOrder/terms/trade/incoTermText) 1-1 (U)
@isCharge	Indicates if the element to which it refers is a charge (true = charge, false = allowance) - base type: boolean, min length: 0, (XPath RAWDyeOrder/terms/allowanceCharge/@isCharge) [Optional] (N)
@isURL	it indicates if the referred element is an URL (true) or not (false) - base type: boolean, (XPath RAWDyeOrder/RDCOheader/refDoc/attachment/externalReference/uri/@isURL) [Optional] [Default= true] (Na) - nota: <i>usage of URLs is recommended</i> (XPath RAWDyeOrder/RDCObody/RDCOitem/rawComponent/refDoc/attachment/externalReference/uri/@isURL) [Optional] [Default= true] (Na) - nota: <i>usage of URLs is recommended</i> (XPath RAWDyeOrder/RDCObody/RDCOitem/rawMnfrOperation/refDoc/attachment/externalReference/uri/@isURL) [Optional] [Default= true] (Na) - nota: <i>usage of URLs is recommended</i>
itemID	number of the line/item of the referenced document - base type: string, max length: 40, (XPath RAWDyeOrder/RDCObody/RDCOitem/rawComponent/refDoc/itemID) 0-1 (U) (XPath RAWDyeOrder/RDCOheader/refDoc/itemID) 0-1 (U) (XPath RAWDyeOrder/RDCObody/RDCOitem/rawMnfrOperation/refDoc/itemID) 0-1 (U)
jobName	description of the elementary job - base type: string, max length: 40, (XPath RAWDyeOrder/RDCObody/RDCOitem/rawMnfrOperation/jobName) 1-1
legalName	legal name of a Party - base type: string, max length: 250, (XPath RAWDyeOrder/RDCOheader/subContractor/legalName) 0-1 (U) (XPath RAWDyeOrder/RDCObody/RDCOitem/thirdParty/legalName) 0-1 (U) (XPath RAWDyeOrder/RDCOheader/thirdParty/legalName) 0-1 (U) (XPath RAWDyeOrder/RDCOheader/buyer/legalName) 0-1 (U)

legalRef	<p>legal reference of the duty or tax or fee category</p> <ul style="list-style-type: none"> <li>- base type: string,</li> <li>(XPath RAWDyeOrder/RDCObody/RDCOitem/dtScheme/legalRef) 0-1 (A)</li> <li>(XPath RAWDyeOrder/terms/allowanceCharge/dtScheme/legalRef) 0-1 (A)</li> </ul>
lineN	<p>number of the line item of the present message (xml document); it is set by the role that produces the document. Usually it is a progressive number, but not always.</p> <ul style="list-style-type: none"> <li>- base type: positiveInteger, min inclusive: 1, max inclusive: 9999,</li> <li>(XPath RAWDyeOrder/RDCObody/RDCOitem/lineN) 1-1</li> </ul>
@listName	<p>the name of the list of codes used to make an instance of the element (it might be thought as descriptive element, i.e. 'fabric printing technologies', or not, i.e. "T264")</p> <ul style="list-style-type: none"> <li>- base type: string, max length: 40,</li> <li>(XPath RAWDyeOrder/RDCObody/RDCOitem/rawProd/rawCode/color/@listName) [Optional]</li> <li>- nota: <i>this attribute should always be used coupled with "numberingOrg"</i> (XPath RAWDyeOrder/RDCObody/RDCOitem/rawProd/rawCode/art/@listName) [Optional]</li> <li>- nota: <i>this attribute should always be used coupled with "numberingOrg"</i> (XPath RAWDyeOrder/RDCObody/RDCOitem/rawComponent/rawCode/color/@listName) [Optional]</li> <li>- nota: <i>this attribute should always be used coupled with "numberingOrg"</i> (XPath RAWDyeOrder/RDCObody/RDCOitem/rawMnfrOperation/refDoc/season/@listName) [Optional] (a)</li> <li>- nota: <i>this attribute should always be used coupled with "numberingOrg"</i> (XPath RAWDyeOrder/RDCOheader/refDoc/season/@listName) [Optional] (a)</li> <li>- nota: <i>this attribute should always be used coupled with "numberingOrg"</i> (XPath RAWDyeOrder/RDCObody/RDCOitem/rawComponent/refDoc/season/@listName) [Optional] (a)</li> <li>- nota: <i>this attribute should always be used coupled with "numberingOrg"</i> (XPath RAWDyeOrder/RDCObody/RDCOitem/dtScheme/legalRef/@listName) [Optional] (a)</li> <li>- nota: <i>this attribute should always be used coupled with "numberingOrg"</i> (XPath RAWDyeOrder/RDCOheader/season/@listName) [Optional] (a)</li> <li>- nota: <i>this attribute should always be used coupled with "numberingOrg"</i> (XPath RAWDyeOrder/RDCObody/RDCOitem/rawComponent/rawCode/art/@listName) [Optional]</li> <li>- nota: <i>this attribute should always be used coupled with "numberingOrg"</i> (XPath RAWDyeOrder/terms/allowanceCharge/dtScheme/legalRef/@listName) [Optional]</li> <li>- nota: <i>this attribute should always be used coupled with "numberingOrg"</i></li> </ul>
@listVersion	<p>it specifies the version of the list of codes used to make an instance of the element</p> <ul style="list-style-type: none"> <li>- base type: string, max length: 6,</li> <li>(XPath RAWDyeOrder/RDCObody/RDCOitem/rawProd/rawCode/color/@listVersion) [Optional]</li> <li>- nota: <i>this attribute should always be used coupled with "numberingOrg" and "listName"</i> (XPath RAWDyeOrder/RDCOheader/season/@listVersion) [Optional] (a)</li> <li>- nota: <i>this attribute should always be used coupled with "numberingOrg" and "listName"</i> (XPath RAWDyeOrder/RDCObody/RDCOitem/rawComponent/refDoc/season/@listVersion) [Optional] (a)</li> <li>- nota: <i>this attribute should always be used coupled with "numberingOrg" and "listName"</i> (XPath RAWDyeOrder/terms/allowanceCharge/dtScheme/legalRef/@listVersion) [Optional]</li> <li>- nota: <i>this attribute should always be used coupled with "numberingOrg" and "listName"</i> (XPath RAWDyeOrder/RDCObody/RDCOitem/dtScheme/legalRef/@listVersion) [Optional] (a)</li> </ul>

	<p>- nota: <i>this attribute should always be used coupled with “numberingOrg” and “listName”</i>  (XPath RAWDyeOrder/RDCObody/RDCOitem/rawMnfrOperation/refDoc/season/@listVersion) [Optional] (a)</p> <p>- nota: <i>this attribute should always be used coupled with “numberingOrg” and “listName”</i>  (XPath RAWDyeOrder/RDCObody/RDCOitem/rawComponent/rawCode/art/@listVersion) [Optional]</p> <p>- nota: <i>this attribute should always be used coupled with “numberingOrg” and “listName”</i>  (XPath RAWDyeOrder/RDCObody/RDCOitem/rawProd/rawCode/art/@listVersion) [Optional]</p> <p>- nota: <i>this attribute should always be used coupled with “numberingOrg” and “listName”</i>  (XPath RAWDyeOrder/RDCOheader/refDoc/season/@listVersion) [Optional] (a)</p> <p>- nota: <i>this attribute should always be used coupled with “numberingOrg” and “listName”</i>  (XPath RAWDyeOrder/RDCObody/RDCOitem/rawComponent/rawCode/color/@listVersion) [Optional]</p> <p>- nota: <i>this attribute should always be used coupled with “numberingOrg” and “listName”</i></p>
@ln	<p>Language code.</p> <p>- base type: string, cod. table: NT60  <a href="http://www.ebiz.enea.it/moda-ml/repository/codelist/v2018-1/gc_NT60.xml">http://www.ebiz.enea.it/moda-ml/repository/codelist/v2018-1/gc_NT60.xml</a>  (XPath RAWDyeOrder/RDCObody/RDCOitem/rawProd/rawCode/description/@ln) [Optional] (N)  (XPath RAWDyeOrder/RDCObody/RDCOitem/rawComponent/rawCode/description/@ln) [Optional] (N)</p>
location	<p>specification of a location</p> <p>- base type: string, max length: 40,  (XPath RAWDyeOrder/terms/trade/location) 0-1</p> <p>- note: <i>place to which the INCOTERM applies</i>  (XPath RAWDyeOrder/RDCObody/RDCOitem/rawComponent/location) 0-1</p>
@logo	<p>company logo (URL of the image jpeg or gif). It is recommended that the width of the image does not exceed 640 pixel.</p> <p>- base type: string, max length: 255,  (XPath RAWDyeOrder/RDCOheader/buyer/@logo) [Optional]</p>
lotN	<p>lot number of a product or batch number of the raw material</p> <p>- base type: string, max length: 15,  (XPath RAWDyeOrder/RDCObody/RDCOitem/rawProd/lotN) 0-1  (XPath RAWDyeOrder/RDCObody/RDCOitem/rawComponent/lotN) 0-1</p>
@LRI	<p>attribute usable to format a string according to a customized User rule (local rule)</p> <p>- base type: string, cod. table: NT3  <a href="http://www.ebiz.enea.it/moda-ml/repository/codelist/v2018-1/gc_NT3.xml">http://www.ebiz.enea.it/moda-ml/repository/codelist/v2018-1/gc_NT3.xml</a>  (XPath RAWDyeOrder/RDCObody/RDCOitem/rawComponent/location/@LRI) [Optional]  (XPath RAWDyeOrder/terms/trade/location/@LRI) [Optional]</p>
@maxQty	<p>maximum product quantity</p> <p>- base type: decimal, min inclusive: 0, fraction digits: 2,  (XPath RAWDyeOrder/terms/allowanceCharge/@maxQty) [Optional] (N)</p> <p>- nota: <i>maximum quantity of product for the application of this allowance or charge</i></p>
@method	<p>standard protocol or method employed in a test to evaluate a characteristic or a parameter</p> <p>- base type: string, max length: 80,  (XPath RAWDyeOrder/RDCObody/RDCOitem/rawProd/rawSpecs/specValue/@method) [Optional]</p>

@mime	<p>the mime type of the binary object</p> <ul style="list-style-type: none"> <li>- base type: normalizedString,</li> </ul> <p>(XPath RAWDyeOrder/RDCObody/RDCOitem/rawMnfrOperation/refDoc/attachment/binaryObject/@mime) [Optional] (Na)</p> <p>(XPath RAWDyeOrder/RDCOheader/refDoc/attachment/binaryObject/@mime) [Optional] (N)</p> <p>(XPath RAWDyeOrder/RDCObody/RDCOitem/rawComponent/refDoc/attachment/binaryObject/@mime) [Optional] (Na)</p>
mimeCode	<p>mime type of the external object</p> <ul style="list-style-type: none"> <li>- base type: normalizedString,</li> </ul> <p>(XPath RAWDyeOrder/RDCObody/RDCOitem/rawComponent/refDoc/attachment/externalReference/mimeCode) 0-1 (N)</p> <hr/> <p>AAAA-WARNING! - text not AVAILABLE n. 245 - In=en</p> <p>(XPath RAWDyeOrder/RDCOheader/refDoc/attachment/externalReference/mimeCode) 0-1 (N)</p> <hr/> <p>AAAA-WARNING! - text not AVAILABLE n. 245 - In=en</p> <p>(XPath RAWDyeOrder/RDCObody/RDCOitem/rawMnfrOperation/refDoc/attachment/externalReference/mimeCode) 0-1 (N)</p> <hr/> <p>AAAA-WARNING! - text not AVAILABLE n. 245 - In=en</p>
@minQty	<p>minimum product quantity</p> <ul style="list-style-type: none"> <li>- base type: decimal, min inclusive: 0, fraction digits: 2,</li> </ul> <p>(XPath RAWDyeOrder/terms/allowanceCharge/@minQty) [Optional] (a)</p> <p>- nota: <i>minimum quantity of product for the application of this allowance or charge</i></p>
msgCurrency	<p>currency used to express the monetary amounts of the message</p> <ul style="list-style-type: none"> <li>- base type: string, cod. table: T9</li> </ul> <p><a href="http://www.ebiz.enea.it/moda-ml/repository/codelist/v2018-1/gc_T9.xml">http://www.ebiz.enea.it/moda-ml/repository/codelist/v2018-1/gc_T9.xml</a></p> <p>(XPath RAWDyeOrder/RDCOheader/msgCurrency) 0-1</p>
msgDate	<p>date of issue of the present message (xml document), according to one of the patterns YYYY-MM-DD, YYYY-MM-DD:HH-MM or YYYY-WW.</p> <ul style="list-style-type: none"> <li>- base type: string,</li> </ul> <p>(XPath RAWDyeOrder/RDCOheader/msgDate) 1-1</p>
@msgfunction	<p>function performed by the present message with regards to the transmission</p> <ul style="list-style-type: none"> <li>- base type: string, cod. table: NT18</li> </ul> <p><a href="http://www.ebiz.enea.it/moda-ml/repository/codelist/v2018-1/gc_NT18.xml">http://www.ebiz.enea.it/moda-ml/repository/codelist/v2018-1/gc_NT18.xml</a></p> <p>(XPath RAWDyeOrder/@msgfunction) [Optional] [Default= OR]</p>
msgID	<p>key identifier of the business document in the information system of the issuing Party. In case of more despatches of the same business document, it is unchanged.</p> <ul style="list-style-type: none"> <li>- base type: string, max length: 35,</li> </ul> <p>(XPath RAWDyeOrder/RDCOheader/msgID) 0-1</p>
msgN	<p>identification number given to the message (xml document) by its issuer. In case of more despatches of the same business document, it changes.</p> <ul style="list-style-type: none"> <li>- base type: string, max length: 35,</li> </ul> <p>(XPath RAWDyeOrder/RDCOheader/msgN) 1-1</p>
netWeight	<p>the net weight declared for transport or customs purpose</p> <ul style="list-style-type: none"> <li>- base type: decimal, min inclusive: 0, fraction digits: 2,</li> </ul> <p>(XPath RAWDyeOrder/terms/transInfo/netWeight) 0-1</p>
note	<p>free text or structured (computer processing) note. For note structuring use the attributes "noteLabel" and "codelist"</p> <ul style="list-style-type: none"> <li>- base type: string, max length: 350,</li> </ul> <p>(XPath RAWDyeOrder/RDCObody/RDCOitem/rawComponent/note) 0-99</p> <p>(XPath RAWDyeOrder/RDCObody/RDCOitem/dtScheme/note) 0-99</p> <p>(XPath RAWDyeOrder/RDCOheader/note) 0-99</p> <p>(XPath RAWDyeOrder/RDCObody/RDCOitem/note) 0-99</p> <p>(XPath RAWDyeOrder/RDCObody/RDCOitem/rawMnfrOperation/note) 0-99</p>

	<p>(XPath RAWDyeOrder/RDCObody/RDCOitem/rawProd/note) 0-99  (XPath RAWDyeOrder/terms/allowanceCharge/dtScheme/note) 0-99</p>
@noteLabel	<p>subject qualifier of a note  - base type: string, max length: 35,  (XPath RAWDyeOrder/RDCObody/RDCOitem/note/@noteLabel) [Optional]  - nota: <i>must be used to qualify the subject of the note</i>  (XPath RAWDyeOrder/terms/allowanceCharge/dtScheme/note/@noteLabel) [Optional]  - nota: <i>must be used to qualify the subject of the note</i>  (XPath RAWDyeOrder/RDCObody/RDCOitem/dtScheme/note/@noteLabel) [Optional]  - nota: <i>must be used to qualify the subject of the note</i>  (XPath RAWDyeOrder/RDCObody/RDCOitem/rawMnfrOperation/note/@noteLabel) [Optional]  - nota: <i>must be used to qualify the subject of the note</i>  (XPath RAWDyeOrder/RDCObody/RDCOitem/rawComponent/note/@noteLabel) [Optional]  - nota: <i>must be used to qualify the subject of the note</i>  (XPath RAWDyeOrder/RDCObody/RDCOitem/rawProd/note/@noteLabel) [Optional]  - nota: <i>must be used to qualify the subject of the note</i>  (XPath RAWDyeOrder/RDCOheader/note/@noteLabel) [Optional]  - nota: <i>must be used to qualify the subject of the note</i></p>
@numberingOrg	<p>code specifying the organisation who has created or owns the coding or numbering system  - base type: string, cod. table: NT6  <a href="http://www.ebiz.enea.it/moda-ml/repository/codelist/v2018-1/gc_NT6.xml">http://www.ebiz.enea.it/moda-ml/repository/codelist/v2018-1/gc_NT6.xml</a>  (XPath RAWDyeOrder/RDCObody/RDCOitem/rawMnfrOperation/refDoc/docID/@numberingOrg) [Optional]  - nota: <i>here can be specified whose document numbering is used (e.g.: Client, Supplier, ..)</i>  (XPath RAWDyeOrder/RDCObody/RDCOitem/rawComponent/rawCode/@numberingOrg) [Optional]  (XPath RAWDyeOrder/RDCObody/RDCOitem/rawComponent/rawCode/color/@numberingOrg) [Optional]  - nota: <i>this attribute should be used either single or coupled with "listName" and "listVersion"</i>  (XPath RAWDyeOrder/RDCObody/RDCOitem/rawComponent/refDoc/season/@numberingOrg) [Optional] (a)  - nota: <i>this attribute should be used either single or coupled with "listName" and "listVersion"</i>  (XPath RAWDyeOrder/RDCObody/RDCOitem/rawComponent/rawCode/art/@numberingOrg) [Optional]  - nota: <i>this attribute should be used either single or coupled with "listName" and "listVersion"</i>  (XPath RAWDyeOrder/RDCObody/RDCOitem/rawComponent/dyeN/@numberingOrg) [Optional]  (XPath RAWDyeOrder/RDCObody/RDCOitem/note/@numberingOrg) [Optional]  - nota: <i>must be used to specify the organization that created the list of codes used in "noteLabel"</i>  (XPath RAWDyeOrder/RDCObody/RDCOitem/rawComponent/refDoc/docID/@numberingOrg) [Optional]  - nota: <i>here can be specified whose document numbering is used (e.g.: Client, Supplier, ..)</i>  (XPath RAWDyeOrder/RDCObody/RDCOitem/rawComponent/note/@numberingOrg) [Optional]  - nota: <i>must be used to specify the organization that created the list of codes used in "noteLabel"</i>  (XPath RAWDyeOrder/RDCObody/RDCOitem/rawComponent/lotN/@numberingOrg) [Optional]  (XPath RAWDyeOrder/RDCOheader/refDoc/season/@numberingOrg) [Optional] (a)  - nota: <i>this attribute should be used either single or coupled with "listName" and "listVersion"</i></p>

(XPath RAWDyeOrder/RDCObody/RDCOitem/rawComponent/rawCode/added/@numberingOrg) [Optional]  
- nota: *this attribute should be used either single or coupled with "listName" and "listVersion"*

(XPath RAWDyeOrder/RDCOheader/subContractor/id/@numberingOrg) [Optional]  
(XPath RAWDyeOrder/RDCOheader/note/@numberingOrg) [Optional]  
- nota: *must be used to specify the organization that created the list of codes used in "noteLabel"*

(XPath RAWDyeOrder/RDCObody/RDCOitem/rawProd/rawCode/@numberingOrg) [Optional]  
(XPath RAWDyeOrder/RDCObody/RDCOitem/rawProd/rawCode/art/@numberingOrg) [Optional]  
- nota: *this attribute should be used either single or coupled with "listName" and "listVersion"*

(XPath RAWDyeOrder/RDCOheader/docID/@numberingOrg) [Optional]  
- nota: *here can be specified whose document numbering is used (e.g.: Client, Supplier, ..)*

(XPath RAWDyeOrder/RDCObody/RDCOitem/dtScheme/note/@numberingOrg) [Optional]  
- nota: *must be used to specify the organization that created the list of codes used in "noteLabel"*

(XPath RAWDyeOrder/RDCOheader/buyer/id/@numberingOrg) [Optional]  
(XPath RAWDyeOrder/RDCObody/RDCOitem/thirdParty/id/@numberingOrg) [Optional]  
(XPath RAWDyeOrder/RDCOheader/refDoc/docID/@numberingOrg) [Optional]  
- nota: *here can be specified whose document numbering is used (e.g.: Client, Supplier, ..)*

(XPath RAWDyeOrder/RDCObody/RDCOitem/rawProd/rawCode/added/@numberingOrg) [Optional]  
- nota: *this attribute should be used either single or coupled with "listName" and "listVersion"*

(XPath RAWDyeOrder/RDCObody/RDCOitem/dtScheme/legalRef/@numberingOrg) [Optional] (a)  
- nota: *this attribute should be used either single or coupled with "listName" and "listVersion"*

(XPath RAWDyeOrder/RDCObody/RDCOitem/rawMnfrOperation/note/@numberingOrg) [Optional]  
- nota: *must be used to specify the organization that created the list of codes used in "noteLabel"*

(XPath RAWDyeOrder/RDCObody/RDCOitem/rawProd/lotN/@numberingOrg) [Optional]  
(XPath RAWDyeOrder/RDCObody/RDCOitem/rawProd/rawCode/color/@numberingOrg) [Optional]  
- nota: *this attribute should be used either single or coupled with "listName" and "listVersion"*

(XPath RAWDyeOrder/RDCObody/RDCOitem/rawProd/note/@numberingOrg) [Optional]  
- nota: *must be used to specify the organization that created the list of codes used in "noteLabel"*

(XPath RAWDyeOrder/RDCObody/RDCOitem/rawProd/dyeN/@numberingOrg) [Optional]  
(XPath RAWDyeOrder/RDCOheader/season/@numberingOrg) [Optional] (a)  
- nota: *this attribute should be used either single or coupled with "listName" and "listVersion"*

(XPath RAWDyeOrder/terms/allowanceCharge/dtScheme/note/@numberingOrg) [Optional]  
- nota: *must be used to specify the organization that created the list of codes used in "noteLabel"*

(XPath RAWDyeOrder/RDCOheader/refDoc/attachment/fileName/@numberingOrg) [Optional] (a)  
(XPath RAWDyeOrder/RDCOheader/thirdParty/id/@numberingOrg) [Optional]  
(XPath RAWDyeOrder/terms/allowanceCharge/dtScheme/legalRef/@numberingOrg) [Optional]  
- nota: *this attribute should be used either single or coupled with "listName" and "listVersion"*

	<p>(XPath RAWDyeOrder/RDCObody/RDCOitem/rawMnfrOperation/refDoc/attachment/fileName/@numberingOrg) [Optional] (a)</p> <p>(XPath RAWDyeOrder/RDCOheader/buyer/additionalIdentifier/@numberingOrg) [Optional] (a)</p> <p>- nota: <i>here the issuer of the identifier must be specified</i></p> <p>(XPath RAWDyeOrder/RDCObody/RDCOitem/rawMnfrOperation/refDoc/season/@numberingOrg) [Optional] (a)</p> <p>- nota: <i>this attribute should be used either single or coupled with "listName" and "listVersion"</i></p> <p>(XPath RAWDyeOrder/RDCObody/RDCOitem/rawComponent/refDoc/attachment/fileName/@numberingOrg) [Optional] (a)</p>
@part	<p>percent fraction of a total payment</p> <p>- base type: decimal, min inclusive: 1, max inclusive: 99, fraction digits: 2, (XPath RAWDyeOrder/terms/insPayment/@part) [Required]</p> <p>- nota: <i>here the % value of each installment must be indicated</i></p>
payMode	<p>way or means of payment</p> <p>- base type: string, cod. table: T2</p> <p><a href="http://www.ebiz.enea.it/moda-ml/repository/codelist/v2018-1/gc_T2.xml">http://www.ebiz.enea.it/moda-ml/repository/codelist/v2018-1/gc_T2.xml</a></p> <p>(XPath RAWDyeOrder/terms/insPayment/payMode) 0-1</p> <p>(XPath RAWDyeOrder/terms/payment/payMode) 0-1</p>
payTerm	<p>code specifying the terms or time by which the payment must be done</p> <p>- base type: string, cod. table: T1</p> <p><a href="http://www.ebiz.enea.it/moda-ml/repository/codelist/v2018-1/gc_T1.xml">http://www.ebiz.enea.it/moda-ml/repository/codelist/v2018-1/gc_T1.xml</a></p> <p>(XPath RAWDyeOrder/terms/insPayment/payTerm) 1-1</p> <p>(XPath RAWDyeOrder/terms/payment/payTerm) 1-1</p>
payTermText	<p>free text specifying the terms by which the payment must be done (time/mode or means)</p> <p>- base type: string, max length: 250,</p> <p>(XPath RAWDyeOrder/terms/payment/payTermText) 1-1 (U)</p> <p>(XPath RAWDyeOrder/terms/insPayment/payTermText) 1-1 (U)</p>
pcQty	<p>percent quantity of a raw material or of a specified component in a fabric or in a yarn</p> <p>- base type: decimal, min inclusive: 0, max inclusive: 100, fraction digits: 2, (XPath RAWDyeOrder/RDCObody/RDCOitem/rawComponent/pcQty) 0-1</p>
pcTolerance	<p>percent deviation tolerated on the value of a measurement (it must have a plus or minus sign)</p> <p>- base type: decimal, min inclusive: 0, max inclusive: 100, total digits: 2, (XPath RAWDyeOrder/RDCObody/RDCOitem/rawProd/rawSpecs/pcTolerance) 0-2</p>
person	<p>name of the contact person within a Party</p> <p>- base type: string, max length: 40,</p> <p>(XPath RAWDyeOrder/RDCOheader/thirdParty/person) 0-1</p> <p>(XPath RAWDyeOrder/RDCObody/RDCOitem/thirdParty/person) 0-1</p> <p>(XPath RAWDyeOrder/RDCOheader/subContractor/person) 0-1</p> <p>(XPath RAWDyeOrder/RDCOheader/buyer/person) 0-1</p>
@phone	<p>phone number of the contact person within a Party</p> <p>- base type: string, max length: 35,</p> <p>(XPath RAWDyeOrder/RDCObody/RDCOitem/thirdParty/person/@phone) [Optional]</p> <p>(XPath RAWDyeOrder/RDCOheader/subContractor/person/@phone) [Optional]</p> <p>(XPath RAWDyeOrder/RDCOheader/buyer/person/@phone) [Optional]</p> <p>(XPath RAWDyeOrder/RDCOheader/thirdParty/person/@phone) [Optional]</p>
postCode	<p>code defining the postal zone</p> <p>- base type: string, max length: 10,</p> <p>(XPath RAWDyeOrder/RDCOheader/subContractor/postCode) 0-1</p> <p>(XPath RAWDyeOrder/RDCOheader/buyer/postCode) 0-1</p> <p>(XPath RAWDyeOrder/RDCObody/RDCOitem/thirdParty/postCode) 0-1</p> <p>(XPath RAWDyeOrder/RDCOheader/thirdParty/postCode) 0-1</p>



price	unit price of the article, object or service specified - base type: decimal, min inclusive: 0, fraction digits: 4, (XPath RAWDyeOrder/RDCObody/RDCOitem/price) 0-1 (AU)
@priceQualifier	type of price with reference to discount and taxes - base type: string, cod. table: NT20 <a href="http://www.ebiz.enea.it/moda-ml/repository/codelist/v2018-1/gc_NT20.xml">http://www.ebiz.enea.it/moda-ml/repository/codelist/v2018-1/gc_NT20.xml</a> (XPath RAWDyeOrder/RDCObody/RDCOitem/price/@priceQualifier) [Optional] [Default= NET]
@productLevel	level of the product (end or intermediate) yielded by an operation in a work cycle - base type: string, cod. table: NT22 <a href="http://www.ebiz.enea.it/moda-ml/repository/codelist/v2018-1/gc_NT22.xml">http://www.ebiz.enea.it/moda-ml/repository/codelist/v2018-1/gc_NT22.xml</a> (XPath RAWDyeOrder/RDCObody/RDCOitem/@productLevel) [Optional] [Default= END] - nota: <i>this qualifier "intermediate" must be used when the product is also a component in an other line of the same Commission Order</i>
@progr	progressive number in the sequence - base type: positiveInteger, min inclusive: 1, (XPath RAWDyeOrder/terms/transInfo/@progr) [Optional] (N) - nota: <i>Indicates the position of the leg in a sequence of transport legs. If it is declared it must be in all the transInfo elements.</i>
qty	net quantity of the article or object correlated, qualified by the function of the document (ordering, delivering, ..) and by the context - base type: decimal, min inclusive: 0, fraction digits: 2, (XPath RAWDyeOrder/RDCObody/RDCOitem/rawComponent/qty) 1-2 <hr/> <b>AAAA-WARNING! - text not AVAILABLE n. 245 - In=en</b> (XPath RAWDyeOrder/RDCObody/RDCOitem/qty) 1-2 <hr/> <b>AAAA-WARNING! - text not AVAILABLE n. 245 - In=en</b>
rawChar	physical or mechanical parameter used to define a characteristics of a raw material - base type: string, cod. table: T22 <a href="http://www.ebiz.enea.it/moda-ml/repository/codelist/v2018-1/gc_T22.xml">http://www.ebiz.enea.it/moda-ml/repository/codelist/v2018-1/gc_T22.xml</a> (XPath RAWDyeOrder/RDCObody/RDCOitem/rawProd/rawSpecs/rawChar) 1-1
rawCharText	free text describing the physical or mechanical parameter used to define a characteristics of a raw material - base type: string, max length: 250, (XPath RAWDyeOrder/RDCObody/RDCOitem/rawProd/rawSpecs/rawCharText) 1-1 (U)
rawJob	operation of a work cycle for raw material - base type: string, cod. table: T200 <a href="http://www.ebiz.enea.it/moda-ml/repository/codelist/v2018-1/gc_T200.xml">http://www.ebiz.enea.it/moda-ml/repository/codelist/v2018-1/gc_T200.xml</a> (XPath RAWDyeOrder/RDCObody/RDCOitem/rawMnfrOperation/rawJob) 1-1
@role	Third Party role qualifier - base type: string, cod. table: NT2 <a href="http://www.ebiz.enea.it/moda-ml/repository/codelist/v2018-1/gc_NT2.xml">http://www.ebiz.enea.it/moda-ml/repository/codelist/v2018-1/gc_NT2.xml</a> (XPath RAWDyeOrder/RDCObody/RDCOitem/thirdParty/@role) [Required] (XPath RAWDyeOrder/RDCOheader/thirdParty/@role) [Required]
season	sale season; defined as: season (1 crt) + year (4 crt) - season: S/S=1 A/W=2 Spring=3 Summer=4 Autumn=5 Winter=6: for more than four seasons use alphabetic sequence: 1st season=A 2nd season=B etc.etc. - base type: string, max length: 15, (XPath RAWDyeOrder/RDCOheader/season) 0-1 (A) (XPath RAWDyeOrder/RDCObody/RDCOitem/rawComponent/refDoc/season) 0-1 (A) - note: <i>here indicates the season to which the referenced document belongs</i> (XPath RAWDyeOrder/RDCOheader/refDoc/season) 0-1 (A) - note: <i>here indicates the season to which the referenced document belongs</i>

	<p>(XPath RAWDyeOrder/RDCObody/RDCOitem/rawMnfrOperation/refDoc/season) 0-1 (A)</p> <p>- note: <i>here indicates the season to which the referenced document belongs</i></p>
@sender	<p>qualifier that specifies the Party issuing of the document</p> <p>- base type: boolean,</p> <p>(XPath RAWDyeOrder/RDCObody/RDCOitem/thirdParty/@sender) [Optional] (a*)</p> <p>- nota: <i>This attribute is mandatory when the STYLESHEET must be used</i></p> <p>(XPath RAWDyeOrder/RDCOheader/thirdParty/@sender) [Optional] (a*)</p> <p>- nota: <i>This attribute is mandatory when the STYLESHEET must be used</i></p> <p>(XPath RAWDyeOrder/RDCOheader/buyer/@sender) [Optional] (a*)</p> <p>- nota: <i>This attribute is mandatory when the STYLESHEET must be used</i></p> <p>(XPath RAWDyeOrder/RDCOheader/subContractor/@sender) [Optional] (a*)</p> <p>- nota: <i>This attribute is mandatory when the STYLESHEET must be used</i></p>
@source	<p>party who has provided the data</p> <p>- base type: string, cod. table: NT12</p> <p><a href="http://www.ebiz.enea.it/moda-ml/repository/codelist/v2018-1/gc_NT12.xml">http://www.ebiz.enea.it/moda-ml/repository/codelist/v2018-1/gc_NT12.xml</a></p> <p>(XPath RAWDyeOrder/RDCObody/RDCOitem/rawProd/rawSpecs/specValue/@source) [Optional]</p>
specValue	<p>value requested for a property or a parameter that is measured</p> <p>- base type: decimal,</p> <p>(XPath RAWDyeOrder/RDCObody/RDCOitem/rawProd/rawSpecs/specValue) 0-1</p>
street	<p>street and building number identifying a location</p> <p>- base type: string, max length: 80,</p> <p>(XPath RAWDyeOrder/RDCOheader/buyer/street) 0-1</p> <p>(XPath RAWDyeOrder/RDCOheader/subContractor/street) 0-1</p> <p>(XPath RAWDyeOrder/RDCObody/RDCOitem/thirdParty/street) 0-1</p> <p>(XPath RAWDyeOrder/RDCOheader/thirdParty/street) 0-1</p>
subCountry	<p>short name or code of the sub-country entity</p> <p>- base type: string, max length: 9,</p> <p>(XPath RAWDyeOrder/RDCOheader/subContractor/subCountry) 0-1</p> <p>(XPath RAWDyeOrder/RDCObody/RDCOitem/thirdParty/subCountry) 0-1</p> <p>(XPath RAWDyeOrder/RDCOheader/thirdParty/subCountry) 0-1</p> <p>(XPath RAWDyeOrder/RDCOheader/buyer/subCountry) 0-1</p>
subDept	<p>name or code of a contact department within a Party</p> <p>- base type: string, max length: 40,</p> <p>(XPath RAWDyeOrder/RDCObody/RDCOitem/thirdParty/subDept) 0-1 (N)</p> <p>(XPath RAWDyeOrder/RDCOheader/subContractor/subDept) 0-1 (N)</p> <p>(XPath RAWDyeOrder/RDCOheader/buyer/subDept) 0-1 (N)</p> <p>(XPath RAWDyeOrder/RDCOheader/thirdParty/subDept) 0-1 (N)</p>
taxCategory	<p>duty or tax or fee category</p> <p>- base type: string, cod. table: T62</p> <p><a href="http://www.ebiz.enea.it/moda-ml/repository/codelist/v2018-1/gc_T62.xml">http://www.ebiz.enea.it/moda-ml/repository/codelist/v2018-1/gc_T62.xml</a></p> <p>(XPath RAWDyeOrder/RDCObody/RDCOitem/dtScheme/taxCategory) 0-1</p> <p>(XPath RAWDyeOrder/terms/allowanceCharge/dtScheme/taxCategory) 0-1</p>
taxRate	<p>duty or tax or fee percent rate</p> <p>- base type: string,</p> <p>(XPath RAWDyeOrder/terms/allowanceCharge/dtScheme/taxRate) 0-1</p> <p>(XPath RAWDyeOrder/RDCObody/RDCOitem/dtScheme/taxRate) 0-1</p>
@taxType	<p>duty or tax or fee type</p> <p>- base type: string, cod. table: T61</p> <p><a href="http://www.ebiz.enea.it/moda-ml/repository/codelist/v2018-1/gc_T61.xml">http://www.ebiz.enea.it/moda-ml/repository/codelist/v2018-1/gc_T61.xml</a></p> <p>(XPath RAWDyeOrder/RDCObody/RDCOitem/dtScheme/@taxType) [Required]</p> <p>(XPath RAWDyeOrder/terms/allowanceCharge/dtScheme/@taxType) [Required]</p>
tolerance	<p>deviation tolerated on the value of a measurement (it must have a plus or minus sign)</p> <p>- base type: decimal,</p> <p>(XPath RAWDyeOrder/RDCObody/RDCOitem/rawProd/rawSpecs/tolerance) 0-2</p>

transCondition	special condition of transport or special service requested to the Forwarder - base type: string, cod. table: T38 <a href="http://www.ebiz.enea.it/moda-ml/repository/codelist/v2018-1/gc_T38.xml">http://www.ebiz.enea.it/moda-ml/repository/codelist/v2018-1/gc_T38.xml</a> (XPath RAWDyeOrder/terms/transInfo/transCondition) 0-3
transConditionText	free text description of the special condition of transport or special service requested to the Forwarder - base type: string, max length: 250, (XPath RAWDyeOrder/terms/transInfo/transConditionText) 0-1 (U)
transMeans	means of transport, in general or referred to a specific leg - base type: string, cod. table: T40 <a href="http://www.ebiz.enea.it/moda-ml/repository/codelist/v2018-1/gc_T40.xml">http://www.ebiz.enea.it/moda-ml/repository/codelist/v2018-1/gc_T40.xml</a> (XPath RAWDyeOrder/terms/transInfo/transMeans) 0-1
transMode	way of transport, in general or referred to the specified leg - base type: string, cod. table: T8 <a href="http://www.ebiz.enea.it/moda-ml/repository/codelist/v2018-1/gc_T8.xml">http://www.ebiz.enea.it/moda-ml/repository/codelist/v2018-1/gc_T8.xml</a> (XPath RAWDyeOrder/terms/transInfo/transMode) 1-1
@transReason	reason for the transport - base type: string, cod. table: NT11 <a href="http://www.ebiz.enea.it/moda-ml/repository/codelist/v2018-1/gc_NT11.xml">http://www.ebiz.enea.it/moda-ml/repository/codelist/v2018-1/gc_NT11.xml</a> (XPath RAWDyeOrder/terms/transInfo/@transReason) [Optional]
@uid	unique element identifier within the xml document - base type: string, (XPath RAWDyeOrder/RDCObody/RDCOitem/rawComponent/refDoc/attachment/@uid) [Optional] (XPath RAWDyeOrder/RDCObody/RDCOitem/rawMnfrOperation/refDoc/attachment/@uid) [Optional] (XPath RAWDyeOrder/RDCOheader/refDoc/attachment/@uid) [Optional]
@um	specification of the unit of measure - base type: string, cod. table: NT7 <a href="http://www.ebiz.enea.it/moda-ml/repository/codelist/v2018-1/gc_NT7.xml">http://www.ebiz.enea.it/moda-ml/repository/codelist/v2018-1/gc_NT7.xml</a> (XPath RAWDyeOrder/RDCObody/RDCOitem/rawProd/rawSpecs/specValue/@um) [Optional] (XPath RAWDyeOrder/RDCObody/RDCOitem/rawProd/rawSpecs/pcTolerance/@um) [Optional] - nota: <i>to be used when it has to be soecified if the declared percentage is by weight, volume, etc...</i> (XPath RAWDyeOrder/RDCObody/RDCOitem/rawProd/rawSpecs/tolerance/@um) [Required] (XPath RAWDyeOrder/terms/transInfo/grossWeight/@um) [Required] (XPath RAWDyeOrder/terms/transInfo/netWeight/@um) [Required] (XPath RAWDyeOrder/terms/allowanceCharge/@um) [Optional] (a) (XPath RAWDyeOrder/RDCObody/RDCOitem/qty/@um) [Required] (XPath RAWDyeOrder/RDCObody/RDCOitem/rawComponent/pcQty/@um) [Optional] - nota: <i>to be used when it has to be soecified if the declared percentage is by weight, volume, etc...</i> (XPath RAWDyeOrder/RDCObody/RDCOitem/rawComponent/qty/@um) [Required] (XPath RAWDyeOrder/RDCObody/RDCOitem/price/@um) [Optional] - nota: <i>Unit of measure of the product to which the price is referred (price per meter)</i>
uri	Uniform Resource Identifier (URI) that identifies the external object as an Internet resource - base type: normalizedString, (XPath RAWDyeOrder/RDCObody/RDCOitem/rawMnfrOperation/refDoc/attachment/externalReference/uri) 1-1 (N) (XPath RAWDyeOrder/RDCObody/RDCOitem/rawComponent/refDoc/attachment/externalReference/uri) 1-1 (N) (XPath RAWDyeOrder/RDCOheader/refDoc/attachment/externalReference/uri) 1-1 (N)

<i>@useProfile</i>	<p>use profile to which the present document is compliant if it was agreed by the parties. It is suggested a URI with reference to the firm or the URL of the profile.</p> <p>- base type: string,  (XPath RAWDyeOrder/@useProfile) [Optional]</p>
<i>@VAT</i>	<p>VAT rate or code (DEPRECATED, use dtScheme element)</p> <p>- base type: string, cod. table: NT16  <a href="http://www.ebiz.enea.it/moda-ml/repository/codelist/v2018-1/gc_NT16.xml">http://www.ebiz.enea.it/moda-ml/repository/codelist/v2018-1/gc_NT16.xml</a>  (XPath RAWDyeOrder/RDCOheader/thirdParty/@VAT) [Optional]  (XPath RAWDyeOrder/RDCObody/RDCOitem/lineN/@VAT) [Optional]</p> <p>- nota: <i>Deprecated, prefer dtScheme when available.</i>  (XPath RAWDyeOrder/RDCObody/RDCOitem/thirdParty/@VAT) [Optional]  (XPath RAWDyeOrder/terms/allowanceCharge/@VAT) [Optional]</p>
<i>@version</i>	<p>Dictionary version from which the instance has been created</p> <p>- base type: string, cod. table: NT100  <a href="http://www.ebiz.enea.it/moda-ml/repository/codelist/v2018-1/gc_NT100.xml">http://www.ebiz.enea.it/moda-ml/repository/codelist/v2018-1/gc_NT100.xml</a>  (XPath RAWDyeOrder/@version) [Optional] [Default= 2018-1]</p>

## 2.3 Suggested best practices

**RAWDyeOrder/RDCOheader/refDoc/docID (identification number of the referenced document SINCE 2008-1 ITS USE IN THE HEADER IS DISCOURAGED (REPLACED BY msgID))**

numberingOrg indicates the role that produced the document identifier (it is allowed to declare two different ones -e.g. customer and supplier - with two docID with different numberingOrg

**RAWDyeOrder/RDCObody/RDCOitem/rawComponent/refDoc/docID (identification number of the referenced document SINCE 2008-1 ITS USE IN THE HEADER IS DISCOURAGED (REPLACED BY msgID))**

numberingOrg indicates the role that produced the document identifier (it is allowed to declare two different ones -e.g. customer and supplier - with two docID with different numberingOrg

**RAWDyeOrder/RDCObody/RDCOitem/rawMnfrOperation/**

**refDoc/docID (identification number of the referenced document SINCE 2008-1 ITS USE IN THE HEADER IS DISCOURAGED (REPLACED BY msgID))**

numberingOrg indicates the role that produced the document identifier (it is allowed to declare two different ones -e.g. customer and supplier - with two docID with different numberingOrg

**RAWDyeOrder/RDCObody/RDCOitem/rawComponent/**

**refDoc/attachment/externalReference/mimeType (mime type of the external object)**

Use coding from IANA <http://www.iana.org/assignments/media-types/media-types.xml>

**RAWDyeOrder/RDCOheader/refDoc/attachment/**

**externalReference/mimeType (mime type of the external object)**

Use coding from IANA <http://www.iana.org/assignments/media-types/media-types.xml>

**RAWDyeOrder/RDCObody/RDCOitem/rawMnfrOperation/**

**refDoc/attachment/externalReference/mimeType (mime type of the external object)**

Use coding from IANA <http://www.iana.org/assignments/media-types/media-types.xml>

**RAWDyeOrder/RDCObody/RDCOitem/rawComponent/qty (net quantity of the article or object correlated, qualified by the function of the document (ordering, delivering, ..) and by the context)**

this element can have two instances only if the units of measure are different

**RAWDyeOrder/RDCObody/RDCOitem/qty (net quantity of the article or object correlated, qualified by the function of the document (ordering, delivering, ..) and by the context)**

this element can have two instances only if the units of measure are different

## 2.4 Enumeration tables

List of enumeration tables used in the XML document. You can find the corresponding codes at:  
<http://www.ebiz-tcf.eu/moda-ml/imple/moda-ml-2018-1.asp?lingua=en&pag=6>

### Legenda

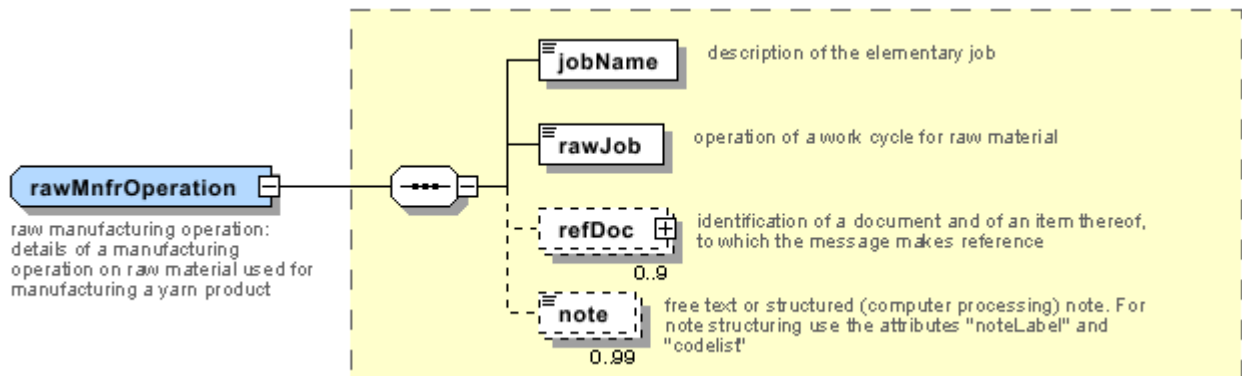
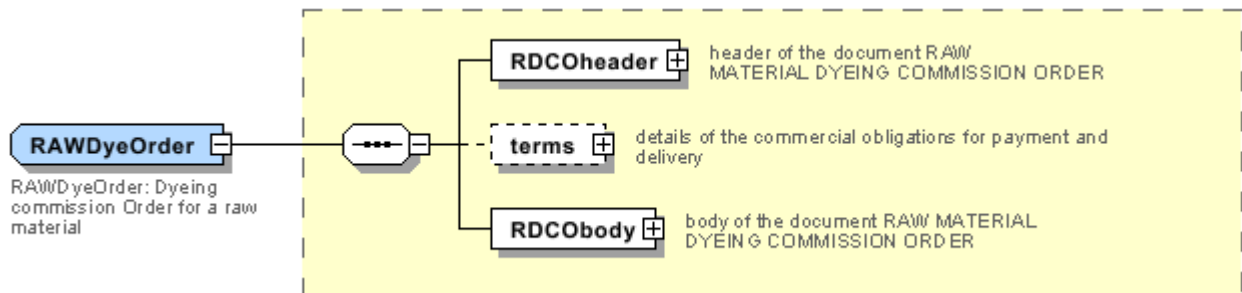
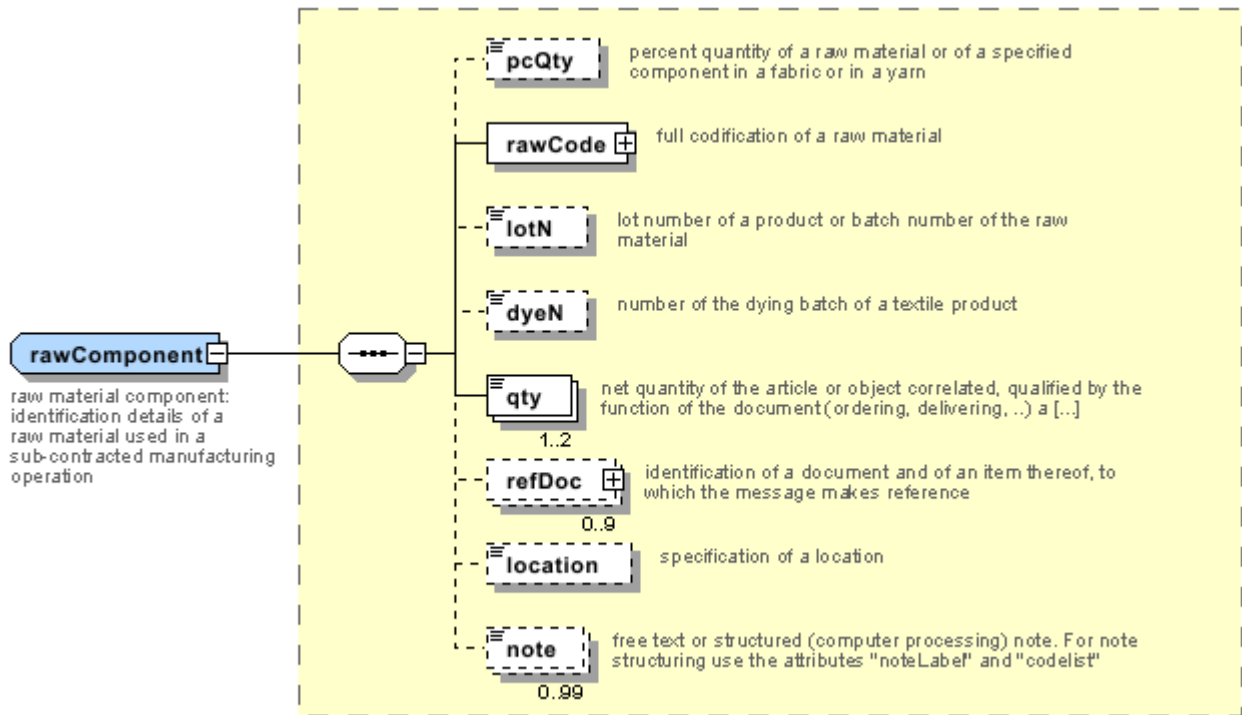
- N: new table
- U: updated properties

NT100 - eBIZ TCFUpstream version  
NT11 - transport causal  
NT12 - data source  
NT16 - VAT rate or code  
NT18 - message function  
NT2 - third party qualifier  
NT20 - price qualifier  
NT22 - product type of an operation  
NT29 - format of a date  
NT3 - data format  
NT37 - committed quantity qualifier  
NT38 - colour test  
NT6 - coding system owner/issuer  
NT60 - language, codes from ISO 639-1 (subset) (N)  
NT7 - unit of measure (U)  
T1 - terms of payment  
T10 - ISO3166 - Country  
T2 - Modes of payment  
T200 - type of job on raw material  
T21 - type of document  
T22 - raw material characteristics type  
T3 - terms of delivery  
T38 - transport conditions  
T40 - type of transport means  
T41 - type of Allowance or Charge  
T44 - additional code type  
T61 - duty or tax or fee type  
T62 - duty or tax or fee category  
T8 - Modes of Transport  
T9 - ISO4217 - Currency

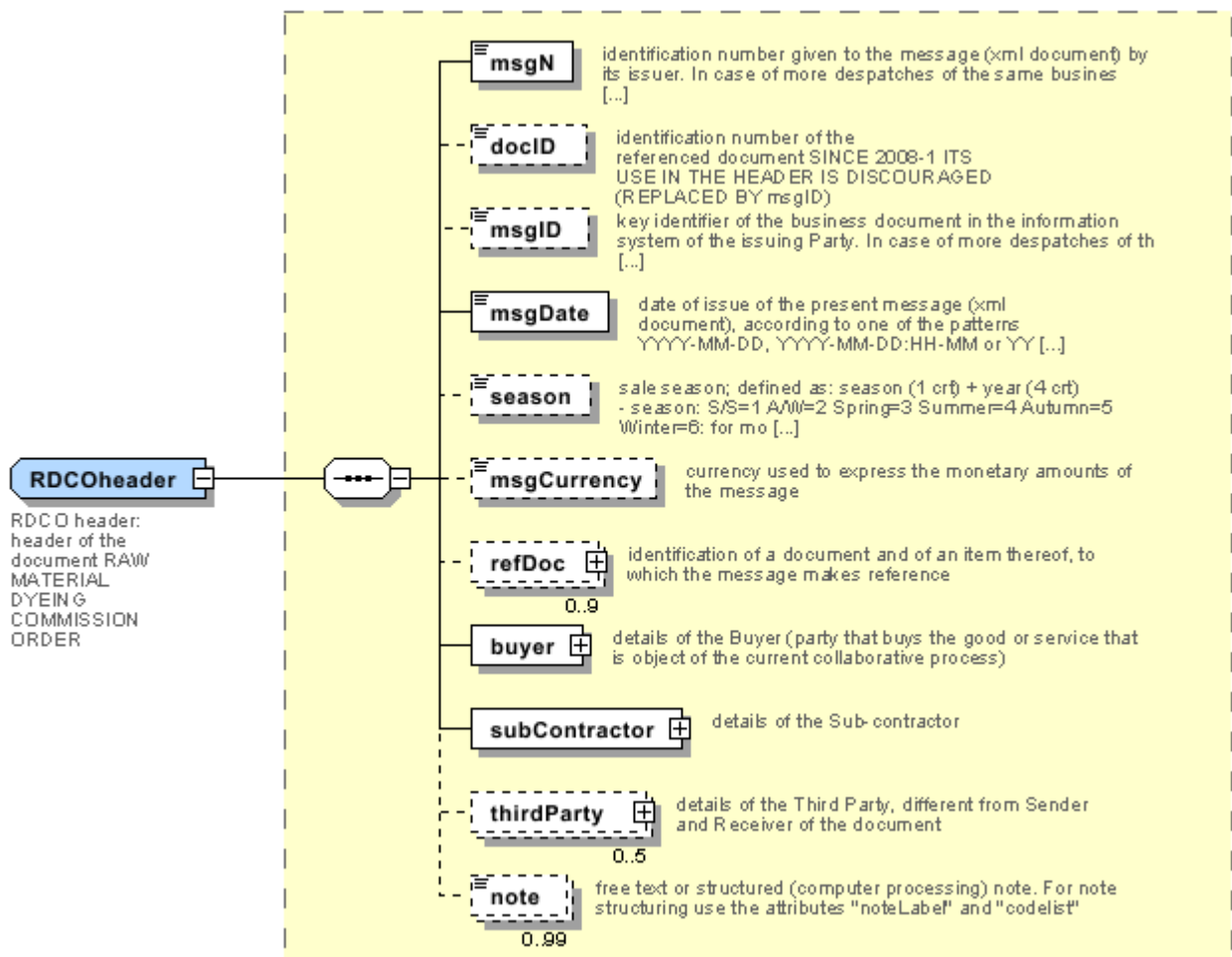
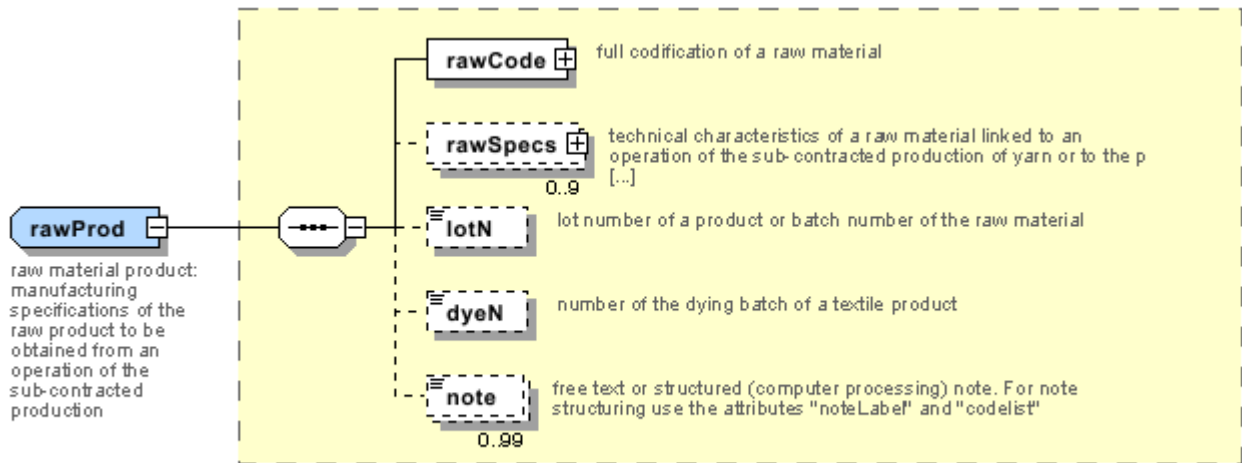


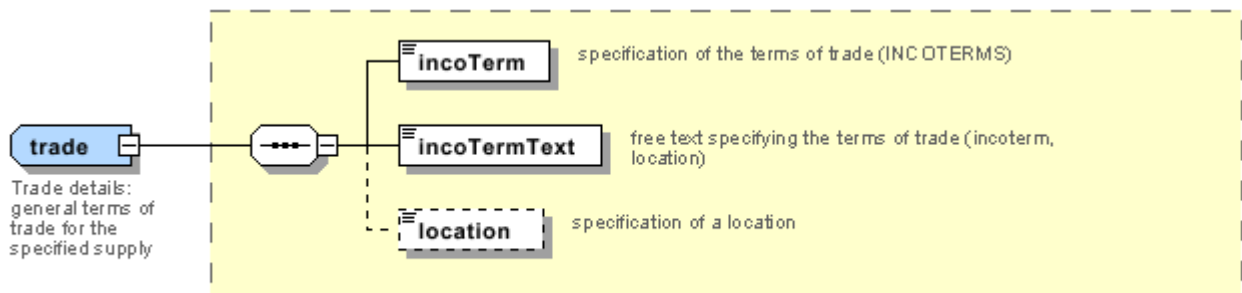
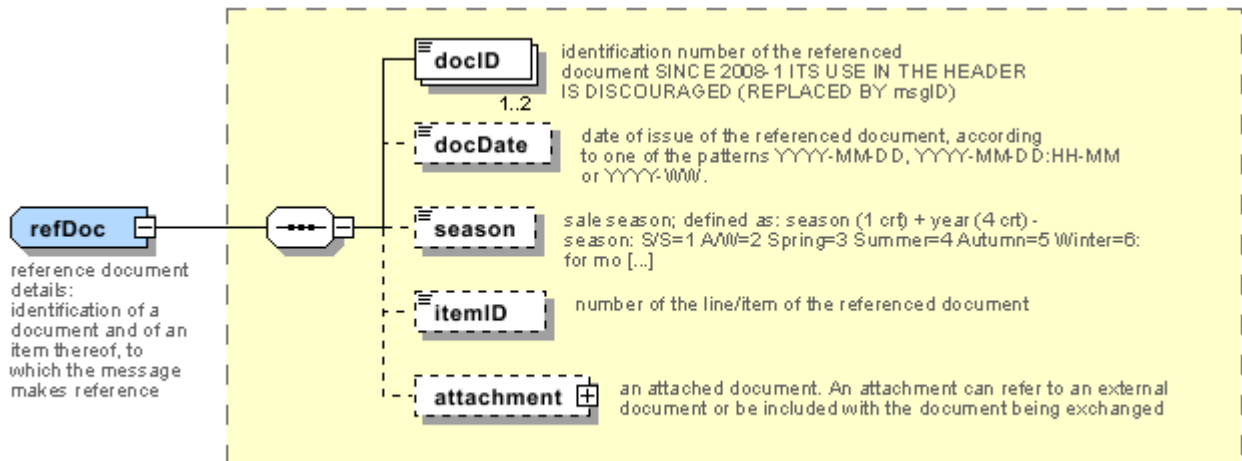
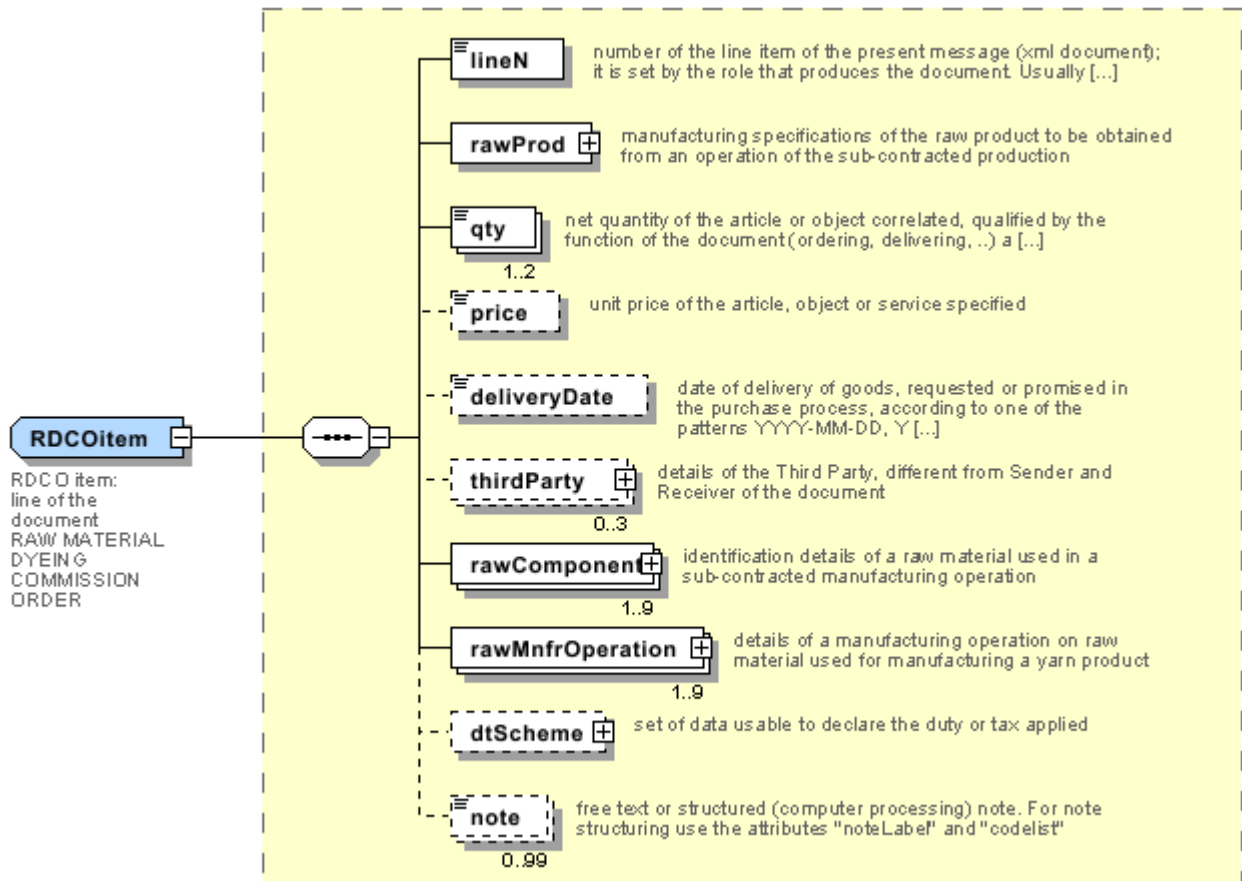
# Annex A

Representative images of the principal complex elements' structure.











## Annex B

### NT100 - eBIZ TCFUpstream version

dictionary version

Agency name: eBIZ

tabella cod.: NT100

File codes list (Generic code): [http://www.ebiz.enea.it/moda-ml/repository/codelist/v2018-1/gc\\_NT100.xml](http://www.ebiz.enea.it/moda-ml/repository/codelist/v2018-1/gc_NT100.xml)

Code	Description	Adoption note	Version status	Date of insertion
2013-1	v2013-1			01/07/2013
2018-1	v2018-1		(N)	04/11/2018
draft	draft		(N)	08/09/2017

### NT11 - transport causal

reason for the transport

Agency name: eBIZ

tabella cod.: NT11

File codes list (Generic code): [http://www.ebiz.enea.it/moda-ml/repository/codelist/v2018-1/gc\\_NT11.xml](http://www.ebiz.enea.it/moda-ml/repository/codelist/v2018-1/gc_NT11.xml)

Code	Description	Adoption note	Version status	Date of insertion
FOC	free of charge			
FRW	return from re-works			
FST	return from storage			
FWW	return from view			
FWK	return from works			
IST	in storage			
NWK	return non-worked			
RJC	return from rejection			
SEL	to sell			
STO	to storage			
VEW	to view			
WRK	to works			

### NT12 - data source

party who has provided the data

Agency name: eBIZ

tabella cod.: NT12

File codes list (Generic code): [http://www.ebiz.enea.it/moda-ml/repository/codelist/v2018-1/gc\\_NT12.xml](http://www.ebiz.enea.it/moda-ml/repository/codelist/v2018-1/gc_NT12.xml)

Code	Description	Adoption note	Version status	Date of insertion
AC	internal test			
CO	external test			
CV	test after steaming			

### NT16 - VAT rate or code

VAT rate or code ( DEPRECATED, use dtScheme element )

tabella cod.: NT16

File codes list (Generic code): [http://www.ebiz.enea.it/moda-ml/repository/codelist/v2018-1/gc\\_NT16.xml](http://www.ebiz.enea.it/moda-ml/repository/codelist/v2018-1/gc_NT16.xml)

### NT18 - message function

function performed by the present message with regards to the transmission

Agency name: eBIZ

tabella cod.: NT18

File codes list (Generic code): [http://www.ebiz.enea.it/moda-ml/repository/codelist/v2018-1/gc\\_NT18.xml](http://www.ebiz.enea.it/moda-ml/repository/codelist/v2018-1/gc_NT18.xml)

Code	Description	Adoption note	Version status	Date of insertion
CA	delete this document			01/07/2013
CP	copy			
OR	original			
RC	re-transmission for data correction			
RT	re-transmission			

### NT2 - third party qualifier

Third Party role qualifier

Agency name: eBIZ

tabella cod.: NT2

File codes list (Generic code): [http://www.ebiz.enea.it/moda-ml/repository/codelist/v2018-1/gc\\_NT2.xml](http://www.ebiz.enea.it/moda-ml/repository/codelist/v2018-1/gc_NT2.xml)

Code	Description	Adoption note	Version status	Date of insertion
AG	Sales Agent			
AU	Auditor		(N)	08/04/2019
CE	Certification authority		(N)	08/04/2019
CO	Quality Controller			
DC	Response to			
DF	Invoicee			
DI	Copy to (CC)			28/10/2014
DM	Consignee			
DP	Consignment address (Delivery Party)			
IM	Importer			
OR	Originator			10/09/2014
SC	Sub contractor		(N)	10/04/2019
SM	Service/ePlatform manager		(N)	08/04/2019
SP	Forwarder			
TX	Tax Representative			

### NT20 - price qualifier

type of price with reference to discount and taxes

Agency name: eBIZ

tabella cod.: NT20

File codes list (Generic code): [http://www.ebiz.enea.it/moda-ml/repository/codelist/v2018-1/gc\\_NT20.xml](http://www.ebiz.enea.it/moda-ml/repository/codelist/v2018-1/gc_NT20.xml)

Code	Description	Adoption note	Version status	Date of insertion
GET	gross excluding taxes			
GIT	gross including taxes			
NET	net excluding taxes			
NIT	net including taxes			

### NT22 - product type of an operation

level of the product (end or intermediate) yielded by an operation in a work cycle

Agency name: eBIZ

tabella cod.: NT22

File codes list (Generic code): [http://www.ebiz.enea.it/moda-ml/repository/codelist/v2018-1/gc\\_NT22.xml](http://www.ebiz.enea.it/moda-ml/repository/codelist/v2018-1/gc_NT22.xml)

Code	Description	Adoption note	Version status	Date of insertion
END	end-product			
INT	intermediate			

### NT29 - format of a date

format used for the date

Agency name: eBIZ

tabella cod.: NT29

File codes list (Generic code): [http://www.ebiz.enea.it/moda-ml/repository/codelist/v2018-1/gc\\_NT29.xml](http://www.ebiz.enea.it/moda-ml/repository/codelist/v2018-1/gc_NT29.xml)

Code	Description	Adoption note	Version status	Date of insertion
D	YYYY-MM-DD			
M	YYYY-MM-DD:HH-MM			
W	YYYY-WW			

### NT3 - data format

format of a string according to a customized User rule (local rule)

Agency name: eBIZ

tabella cod.: NT3

File codes list (Generic code): [http://www.ebiz.enea.it/moda-ml/repository/codelist/v2018-1/gc\\_NT3.xml](http://www.ebiz.enea.it/moda-ml/repository/codelist/v2018-1/gc_NT3.xml)

Code	Description	Adoption note	Version status	Date of insertion
EN4	GS1-GLN			01/07/2013
MD	mutually agreed			

### NT37 - committed quantity qualifier

specifies if the committed quantity can or can not include the loss in weight

Agency name: eBIZ

tabella cod.: NT37

File codes list (Generic code): [http://www.ebiz.enea.it/moda-ml/repository/codelist/v2018-1/gc\\_NT37.xml](http://www.ebiz.enea.it/moda-ml/repository/codelist/v2018-1/gc_NT37.xml)

Code	Description	Adoption note	Version status	Date of insertion
NS	quantity can include losses			
SA	quantity can not include losses			

### NT38 - colour test

specification of colour test before the operation

tabella cod.: NT38

File codes list (Generic code): [http://www.ebiz.enea.it/moda-ml/repository/codelist/v2018-1/gc\\_NT38.xml](http://www.ebiz.enea.it/moda-ml/repository/codelist/v2018-1/gc_NT38.xml)

Code	Description	Adoption note	Version status	Date of insertion
1	only colour test			
2	with colour test			

### NT6 - coding system owner/issuer

code specifying the organisation who has created or owns the coding or numbering system

Agency name: eBIZ

tabella cod.: NT6

File codes list (Generic code): [http://www.ebiz.enea.it/moda-ml/repository/codelist/v2018-1/gc\\_NT6.xml](http://www.ebiz.enea.it/moda-ml/repository/codelist/v2018-1/gc_NT6.xml)

Code	Description	Adoption note	Version status	Date of insertion
CL	Customer/buyer			
CO	Quality Controller			
EB	eBIZ	replaces 'ML'	(N)	18/03/2019
EN	GS1 ( ex-EAN International )			
ES	e-Stockflow			
FO	Supplier			
GS	GS1			01/07/2013
MF	VAT identifier		(U)	
ML	Moda-ML	DEPRECATED	(U)	
SP	Service Provider			



**NT60 - language, codes from ISO 639-1 (subset) (N)**

Agency name: eBIZ / ISO

tabella cod.: NT60

File codes list (Generic code): [http://www.ebiz.enea.it/moda-ml/repository/codelist/v2018-1/gc\\_NT60.xml](http://www.ebiz.enea.it/moda-ml/repository/codelist/v2018-1/gc_NT60.xml)

Code	Description	Adoption note	Version status	Date of insertion
af	Afrikaans		(N)	31/01/2019
ar	Arabic		(N)	31/01/2019
be	Belarusian		(N)	31/01/2019
bg	Bulgarian		(N)	31/01/2019
bn	Bengali		(N)	31/01/2019
bo	Tibetan		(N)	31/01/2019
bs	Bosnian		(N)	31/01/2019
ca	Catalan, Valencian		(N)	31/01/2019
cs	Czech		(N)	31/01/2019
da	Danish		(N)	31/01/2019
de	German		(N)	31/01/2019
el	Greek, Modern (1453-)		(N)	31/01/2019
en	English		(N)	31/01/2019
eo	Esperanto		(N)	31/01/2019
es	Spanish, Castilian		(N)	31/01/2019
et	Estonian		(N)	31/01/2019
eu	Basque		(N)	31/01/2019
F	Female		(N)	15/04/2019
fa	Persian		(N)	31/01/2019
fi	Finnish		(N)	31/01/2019
fr	French		(N)	31/01/2019
ga	Irish		(N)	31/01/2019
gd	Gaelic, Scottish Gaelic		(N)	31/01/2019
gn	Guarani		(N)	31/01/2019
he	Hebrew		(N)	31/01/2019
hr	Croatian		(N)	31/01/2019
ht	Haitian, Haitian Creole		(N)	31/01/2019
hu	Hungarian		(N)	31/01/2019
hy	Armenian		(N)	31/01/2019

ia	Interlingua (International Auxiliary Language Association)		(N)	31/01/2019
id	Indonesian		(N)	31/01/2019
is	Icelandic		(N)	31/01/2019
it	Italian		(N)	31/01/2019
ja	Japanese		(N)	31/01/2019
jv	Javanese		(N)	31/01/2019
ka	Georgian		(N)	31/01/2019
km	Central Khmer		(N)	31/01/2019
ko	Korean		(N)	31/01/2019
ku	Kurdish		(N)	31/01/2019
lb	Luxembourgish, Letzeburgesch		(N)	31/01/2019
lo	Lao		(N)	31/01/2019
lt	Lithuanian		(N)	31/01/2019
lv	Latvian		(N)	31/01/2019
mg	Malagasy		(N)	31/01/2019
mk	Macedonian		(N)	31/01/2019
mn	Mongolian		(N)	31/01/2019
mt	Maltese		(N)	31/01/2019
nl	Dutch, Flemish		(N)	31/01/2019
no	Norwegian		(N)	31/01/2019
pl	Polish		(N)	31/01/2019
pt	Portuguese		(N)	31/01/2019
ro	Romanian, Moldavian, Moldovan		(N)	31/01/2019
ru	Russian		(N)	31/01/2019
se	Northern Sami		(N)	31/01/2019
sk	Slovak		(N)	31/01/2019
sl	Slovenian		(N)	31/01/2019
sm	Samoan		(N)	31/01/2019
so	Somali		(N)	31/01/2019
sq	Albanian		(N)	31/01/2019
sr	Serbian		(N)	31/01/2019
sv	Swedish		(N)	31/01/2019
sw	Swahili		(N)	31/01/2019
ta	Tamil		(N)	31/01/2019
th	Thai		(N)	31/01/2019

tr	Turkish		(N)	31/01/2019
uk	Ukrainian		(N)	31/01/2019
ur	Urdu		(N)	31/01/2019
uz	Uzbek		(N)	31/01/2019
vi	Vietnamese		(N)	31/01/2019
zh	Chinese		(N)	31/01/2019

#### NT7 - unit of measure (U)

specification of the unit of measure, it is a sub set of table Unit of Measure Code - UN/ECE REC 20 delivered by United Nations Economic Commission for Europe (UN/ECE)

Agency name: eBIZ / UN/ECE

tabella cod.: NT7

File codes list (Generic code): [http://www.ebiz.enea.it/moda-ml/repository/codelist/v2018-1/gc\\_NT7.xml](http://www.ebiz.enea.it/moda-ml/repository/codelist/v2018-1/gc_NT7.xml)

Other link: <http://docs.oasis-open.org/ubl/os-UBL-2.1/cl/gc/default/UnitOfMeasureCode-2.1.gc#>

Code	Description	Adoption note	Version status	Date of insertion
CMK	square centimetre		(N)	20/12/2017
CMQ	cubic centimetre		(N)	20/12/2017
CMT	centimetre			
CNE	centiNewton			
CO2TON	ton of CO2		(N)	10/09/2014
COUPLES	couples			
DMQ	cubic decimetre			
E37	pixel		(N)	11/04/2018
GRM	gram			
HUR	hour			
INH	inch			
KGM	kilogram			
KMT	kilometer			
KWH	kilowatthours		(N)	10/09/2014
LBR	pound			
MIN	minute			
MMK	square millimetre		(N)	20/12/2017
MTK	square metre		(N)	20/12/2017
MTQ	cubic metre			

MTR	metre			
NMB	numero			
ONZ	ounce			
P1	percent			
PPM	parts per milion			
PZ	piece		(U)	
RPM	rounds per metre			
YRD	yard			

### T1 - terms of payment

code specifying the terms or time by which the payment must be done

Agency name: eBIZ

tabella cod.: T1

File codes list (Generic code): [http://www.ebiz.enea.it/moda-ml/repository/codelist/v2018-1/gc\\_T1.xml](http://www.ebiz.enea.it/moda-ml/repository/codelist/v2018-1/gc_T1.xml)

Code	Description	Adoption note	Version status	Date of insertion
ANTICIP	PAYMENT IN ADVANCE			
BLCOLLECT/120D	BILL OF LADING 120 DD			
BLCOLLECT/30D	BILL OF LADING 30 DD			
BLCOLLECT/60D	BILL OF LADING 60 DD			
BLCOLLECT/90D	BILL OF LADING 90 DD			
CASH	PAYMENT ON DELIVERY			
CASHINV	PAYMENT ON RECEIPT OF INVOICE			
CREDOC/0D	DOCUMENTARY CREDIT FOR PAYM. AT SIGHT			
CREDOC/120	DOCUMENTARY CREDIT FOR PAYM. AT 120 DD			
CREDOC/150	DOCUMENTARY CREDIT FOR PAYM. AT 150 DD			
CREDOC/180	DOCUMENTARY CREDIT FOR PAYM. AT 180 DD			
CREDOC/30D	DOCUMENTARY CREDIT FOR PAYM. AT 30 DD			
CREDOC/45D	DOCUMENTARY CREDIT FOR PAYM. AT 45 DD			
CREDOC/60	DOCUMENTARY CREDIT FOR PAYM. AT 60 DD			
CREDOC/90	DOCUMENTARY CREDIT FOR PAYM. AT 90 DD			
DEL/10	PAYMENT AT 10 DD AFTER DELIVERY			
DOCOLLECT/120D	DOCUMENTARY COLLECTION AT 120 DD			

DOCOLLECT/30D	DOCUMENTARY COLLECTION AT 30 DD			
DOCOLLECT/60D	DOCUMENTARY COLLECTION AT 60 DD			
DOCOLLECT/90D	DOCUMENTARY COLLECTION AT 90 DD			
INV/120D	PAYMENT AT 120 DD AFTER RECEIPT OF INVOICE			
INV/150D	PAYMENT AT 150 DD AFTER RECEIPT OF INVOICE			
INV/180D	PAYMENT AT 180 DD AFTER RECEIPT OF INVOICE			
INV/30D	PAYMENT AT 30 DD AFTER RECEIPT OF INVOICE			
INV/45D	PAYMENT AT 45 DD AFTER RECEIPT OF INVOICE			
INV/60D	PAYMENT AT 60 DD AFTER RECEIPT OF INVOICE			
INV/90D	PAYMENT AT 90 DD AFTER RECEIPT OF INVOICE			
INVULTIMO	PAYMENT AT END MONTH RECEIPT INVOICE			
INVULTIMO/10D	PAYMENT 10 DD AFTER END MONTH RECEIPT INVOICE			
INVULTIMO/120D	PAYMENT 120 DD AFTER END MONTH RECEIPT INVOICE			
INVULTIMO/150D	PAYMENT 150 DD AFTER END MONTH RECEIPT INVOICE			
INVULTIMO/180D	PAYMENT 180 DD AFTER END MONTH RECEIPT INVOICE			
INVULTIMO/240D	PAYMENT 240 DD AFTER END MONTH RECEIPT INVOICE			
INVULTIMO/30D	PAYMENT 30 DD AFTER END MONTH RECEIPT INVOICE			
INVULTIMO/45D	PAYMENT 45 DD AFTER END MONTH RECEIPT INVOICE			
INVULTIMO/60D	PAYMENT 60 DD AFTER END MONTH RECEIPT INVOICE			
INVULTIMO/90D	PAYMENT 90 DD AFTER END MONTH RECEIPT INVOICE			
NOPAY	WITHOUT PAYMENT			
RECREDOC/0D	IRREVOC. DOCUMENTARY CREDIT FOR PAYM. AT SIGHT			
RECREDOC/120D	IRREVOC. DOCUMENTARY CREDIT FOR PAYM. AT 120 DD			
RECREDOC/150D	IRREVOC. DOCUMENTARY CREDIT FOR PAYM. AT 150 DD			
RECREDOC/180D	IRREVOC. DOCUMENTARY CREDIT FOR PAYM. AT 180 DD			

RECREDOC/30D	IRREVOC. DOCUMENTARY CREDIT FOR PAYM. AT 30 DD			
RECREDOC/45D	IRREVOC. DOCUMENTARY CREDIT FOR PAYM. AT 45 DD			
RECREDOC/60D	IRREVOC. DOCUMENTARY CREDIT FOR PAYM. AT 60 DD			
RECREDOC/90D	IRREVOC. DOCUMENTARY CREDIT FOR PAYM. AT 90 DD			
ULTIMO	PAYMENT BY END MONTH OF DELIVERY			
ULTIMO/10	PAYMENT AT 10 DD AFTER END MONTH OF DELIVERY			

### T10 - ISO3166 - Country

code of the nation

Agency name: ISO

tabella cod.: T10

File codes list (Generic code): [http://www.ebiz.enea.it/moda-ml/repository/codelist/v2018-1/gc\\_T10.xml](http://www.ebiz.enea.it/moda-ml/repository/codelist/v2018-1/gc_T10.xml)

Table not printed: there are 239 elements, more than the maximum specified for printing: 99.

### T2 - Modes of payment

way or means of payment

Agency name: eBIZ

tabella cod.: T2

File codes list (Generic code): [http://www.ebiz.enea.it/moda-ml/repository/codelist/v2018-1/gc\\_T2.xml](http://www.ebiz.enea.it/moda-ml/repository/codelist/v2018-1/gc_T2.xml)

Code	Description	Adoption note	Version status	Date of insertion
BB	bank transfer			
IA	collection through Agent			
IS	collection through Forwarder			
RB	bank receipt			
RD	remittance			
SW	bank SWIFT			
TR	bank draft			

### T200 - type of job on raw material

operation of a work cycle for raw material

Agency name: eBIZ

tabella cod.: T200

File codes list (Generic code): [http://www.ebiz.enea.it/moda-ml/repository/codelist/v2018-1/gc\\_T200.xml](http://www.ebiz.enea.it/moda-ml/repository/codelist/v2018-1/gc_T200.xml)

Code	Description	Adoption note	Version status	Date of insertion
01	dejarrare			
02	to wash			
03	to dry			
04	to mix			
05	to comb			
06	to cut			
07	to tear open			
08	to beat			
09	to carbonise			
10	to dye			
11	felting			
12	to smoothen			
13	vigoreux			
14	angra			
15	basolan			
16	unshrinkable			
17	to blend			

## T21 - type of document

type or class to which the referenced document belongs

Agency name: eBIZ

tabella cod.: T21

File codes list (Generic code): [http://www.ebiz.enea.it/moda-ml/repository/codelist/v2018-1/gc\\_T21.xml](http://www.ebiz.enea.it/moda-ml/repository/codelist/v2018-1/gc_T21.xml)

Code	Description	Adoption note	Version status	Date of insertion
BOR	blanket order		(N)	01/02/2018
CAT	Price catalogue - tech sheet			
CEO	Certificate of origin		(N)	13/04/2018

CER	Certificate		(N)	13/04/2018
COC	colour card			
CRN	Credit note			08/09/2017
CTO	Checking order			01/07/2013
CTR	Contract		(U)	
CXF	CxF3 file			01/07/2013
DAD	Darn order			
DDT	ddt			
DEA	Despatch advise			
DER	Despatch request			
DR	Document Request			02/12/2014
FOR	Forecast			02/12/2014
GSO	Garment stock offer			
GSX	Garment stock offer change			
INV	Invoice			
KCC	Knitting-Clothing Commission Order			02/12/2014
KCI	Garment in Work Inventory Report			02/12/2014
M2M	Made to Measure Production Order			02/12/2014
MAS	Master marker			
MCI	Visual merchandising instruction		(N)	13/04/2018
OCH	Order change			
OFF	Offer			
ORD	Purchase order			
ORP	Order response			
OSR	order status request			
OSS	Offer status			02/12/2014
OST	Order status			
OUR	our reference			
QR	Quality Report			02/12/2014
RAI	Raw Material in Work Inventory Report			02/12/2014
RDC	Raw dyeing commission order			
RDH	Raw dyeing order change			
RDR	Raw dyeing order response			
REA	Receiving advise			
REQ	Request for Offer			



RET	Return			02/12/2014
RSC	Spinning commission order			
RSH	Spinning order change			
RSR	Spinning order response			
SCL	process sheet			
TFC	Textile dyeing-finishing commission order			
TFX	Textile Dyeing-Finishing Order Change			02/12/2014
TPC	Textile printing commission order			
TPX	Textile Printing Order Change			02/12/2014
TWI	Textile in work inventory			
VMI	visual merchandising instructions		(N)	01/02/2018
WAC	Warping commission order			
WEC	Weaving commission order			
YDC	Yarn dyeing commission order			
YDH	Yarn dyeing order change			
YDR	Yarn dyeing order response			
YTC	Twisting commission order			
YWI	Yarn in work inventory			

### T22 - raw material characteristics type

physical or mechanical parameter used to define a characteristics of a raw material

Agency name: eBIZ

tabella cod.: T22

File codes list (Generic code): [http://www.ebiz.enea.it/moda-ml/repository/codelist/v2018-1/gc\\_T22.xml](http://www.ebiz.enea.it/moda-ml/repository/codelist/v2018-1/gc_T22.xml)

Code	Description	Adoption note	Version status	Date of insertion
FIN	fineness			
LNG	length			
RTR	shrinkage			
YLD	yeld			

### T3 - terms of delivery

specification of the terms of trade (INCOTERMS)

Agency name: Incoterms

tabella cod.: T3

File codes list (Generic code): [http://www.ebiz.enea.it/moda-ml/repository/codelist/v2018-1/gc\\_T3.xml](http://www.ebiz.enea.it/moda-ml/repository/codelist/v2018-1/gc_T3.xml)

<b>Cod e</b>	<b>Description</b>	<b>Adoption note</b>	<b>Versi on statu s</b>	<b>Date of insertio n</b>
CF R	COST AND FREIGHT (named port of destination)			
CIF	COST, INSURANCE AND FREIGHT (named port of destination)			
CIP	CARRIAGE AND INSURANCE PAID (named place of destination)			
CP T	CARRIAGE PAID (named place of destination)			
DA F	DELIVERED AT FRONTIER (named place)	according to Incoterms® 2010 it is obsolete		08/12/2017
DA P	Delivered at Place of destination (named place of destination)	according to Incoterms® 2010		08/12/2017
DA T	Delivered at Terminal (named place of destination)	according to Incoterms® 2010		08/12/2017
DD P	DELIVERED DUTY PAID (named place of destination)			
DD U	DELIVERED DUTY UNPAID (named place of destination)	according to Incoterms® 2010 it is obsolete, use DAP		08/12/2017
DE Q	DELIVERED EX-QUAY (named port of destination)	according to Incoterms® 2010 it is obsolete		08/12/2017
DE S	DELIVERED EX-SHIP (named port of destination)	according to Incoterms® 2010 it is obsolete		08/12/2017
EX W	EX WORKS (named place)			
FA S	FREE ALONGSIDE SHIP (named port of shipment)			
FC A	FREE CARRIER (named place)			
FO B	FREE ON BOARD (named port of shipment)			

### T38 - transport conditions

special condition of transport or special service requested to the Forwarder

tabella cod.: T38

File codes list (Generic code): [http://www.ebiz.enea.it/moda-ml/repository/codelist/v2018-1/gc\\_T38.xml](http://www.ebiz.enea.it/moda-ml/repository/codelist/v2018-1/gc_T38.xml)

Code	Description	Adoption note	Version status	Date of insertion
ACC	arrange customs clearance			
CAL	Carrier loads			
CAU	Carrier unloads			
CMR	CMR carnet			
FFN	freight forwarders national conditions			
FLD	special agreement for full loading			
NCC	do not arrange customs clearance			
PPB	packaging paid by Buyer			
PPS	packaging paid by Supplier			
PRO	proof of delivery			
RFR	return container free			
RPC	return container paid by Customer			
RPS	return container paid by Supplier			
SHL	Shipper loads			
SHU	Consignee unloads			

#### T40 - type of transport means

means of transport, in general or referred to a specific leg

Agency name: eBIZ

tabella cod.: T40

File codes list (Generic code): [http://www.ebiz.enea.it/moda-ml/repository/codelist/v2018-1/gc\\_T40.xml](http://www.ebiz.enea.it/moda-ml/repository/codelist/v2018-1/gc_T40.xml)

Code	Description	Adoption note	Version status	Date of insertion
AIR	aircraft			
SHP	ship			
TRU	truck			
VAN	van			

#### T41 - type of Allowance or Charge

coded specification of an Allowance or Charge (elaborated from UNECE 4465)

Agency name: eBIZ

tabella cod.: T41

File codes list (Generic code): [http://www.ebiz.enea.it/moda-ml/repository/codelist/v2018-1/gc\\_T41.xml](http://www.ebiz.enea.it/moda-ml/repository/codelist/v2018-1/gc_T41.xml)

Code	Description	Adoption note	Version status	Date of insertion
1	Agreed settlement		(N)	19/08/2018
10	Costs for draft		(N)	19/08/2018
11	Bank charges	DEPRECATED, use CBK	(N)	19/08/2018
12	Agent commission		(N)	19/08/2018
14	Wrong delivery		(N)	19/08/2018
15	Goods returned to agent		(N)	19/08/2018
16	Goods partly returned		(N)	19/08/2018
17	Transport damage		(N)	19/08/2018
19	Trade discount		(N)	19/08/2018
2	Below specification goods		(N)	19/08/2018
20	Deduction for late delivery	DEPRECATED, use CWB	(N)	19/08/2018
21	Advertising costs		(N)	19/08/2018
22	Customs duties		(N)	19/08/2018
23	Telephone and postal costs		(N)	19/08/2018
24	Repair costs		(N)	19/08/2018
25	Attorney fees		(N)	19/08/2018
26	Taxes		(N)	19/08/2018
3	Damaged goods		(N)	19/08/2018
30	Direct payment to seller		(N)	19/08/2018

32	Goods not delivered		(N)	19/08/2018
33	Late delivery		(N)	19/08/2018
35	Goods returned		(N)	19/08/2018
36	Invoice not received		(N)	19/08/2018
37	Credit note to debtor/not to us		(N)	19/08/2018
38	Deducted bonus		(N)	19/08/2018
39	Deducted discount		(N)	19/08/2018
4	Short delivery		(N)	19/08/2018
40	Deducted freight costs		(N)	19/08/2018
41	Deduction against other invoices		(N)	19/08/2018
42	Credit balance(s)		(N)	19/08/2018
45	Debit note to seller		(N)	19/08/2018
46	Discount beyond terms		(N)	19/08/2018
48	Allowance/charge error		(N)	19/08/2018
49	Substitute product		(N)	19/08/2018
50	Terms of sale error		(N)	19/08/2018
52	Wrong invoice		(N)	19/08/2018
53	Duplicate invoice		(N)	19/08/2018
54	Weight error		(N)	19/08/2018
55	Additional charge not authorized		(N)	19/08/2018
56	Incorrect discount		(N)	19/08/2018
57	Price change		(N)	19/08/2018

58	Variation		(N)	19/08/2018
59	Chargeback		(N)	19/08/2018
65	Settlement to agent		(N)	19/08/2018
66	Cash discount		(N)	19/08/2018
7	Payment on account		(N)	19/08/2018
70	Wrong monetary amount resulting from incorrect free goods quantity		(N)	19/08/2018
72	Temporary special promotion		(N)	19/08/2018
73	Difference in tax rate		(N)	19/08/2018
74	Quantity discount		(N)	19/08/2018
75	Promotion discount		(N)	19/08/2018
76	Cancellation deadline passed		(N)	19/08/2018
77	Pricing discount		(N)	19/08/2018
78	Volume discount		(N)	19/08/2018
79	Sundry discount		(N)	19/08/2018
8	Returnable container charge included		(N)	19/08/2018
9	Invoice error		(N)	19/08/2018
AWA	bonus for works ahead of schedule			
CBK	bank charges			
CCR	servizio di corriere			
CIN	insurance			
CLB	labelling			
CPK	packing			
CSP	special packing			
CWB	penalty for works behind schedule			

#### T44 - additional code type

qualifier of the additional coding of a product

Agency name: eBIZ

tabella cod.: T44

File codes list (Generic code): [http://www.ebiz.enea.it/moda-ml/repository/codelist/v2018-1/gc\\_T44.xml](http://www.ebiz.enea.it/moda-ml/repository/codelist/v2018-1/gc_T44.xml)

Code	Description	Adoption note	Version status	Date of insertion
CC	colour card			
CL	sales collection			
CO	company identification code		(N)	08/09/2017
DY	dye number			
LT	lot number			
MDI	Made in			08/09/2017
MS	manufacturing state			
PKG	packaging			09/09/2014
PL	product line			
RGB	RGB value			
SE	selvedge code			

#### T61 - duty or tax or fee type

duty or tax or fee type

Agency name: eBIZ

tabella cod.: T61

File codes list (Generic code): [http://www.ebiz.enea.it/moda-ml/repository/codelist/v2018-1/gc\\_T61.xml](http://www.ebiz.enea.it/moda-ml/repository/codelist/v2018-1/gc_T61.xml)

Code	Description	Adoption note	Version status	Date of insertion
BOL	stamp duty			01/07/2013
CUD	customs duty			01/07/2013
ENV	environmental tax			01/07/2013
FRE	no tax			01/07/2013
OTH	other tax charges			01/07/2013
VAT	value added tax			01/07/2013

## T62 - duty or tax or fee category

duty or tax or fee category

Agency name: eBIZ

tabella cod.: T62

File codes list (Generic code): [http://www.ebiz.enea.it/moda-ml/repository/codelist/v2018-1/gc\\_T62.xml](http://www.ebiz.enea.it/moda-ml/repository/codelist/v2018-1/gc_T62.xml)

Code	Description	Adoption note	Version status	Date of insertion
AA	lower than standard rate			01/07/2013
E	tax not applicable			01/07/2013
H	higher than standard rate			01/07/2013
O	outside scope of tax			01/07/2013
S	standard rate			01/07/2013
Z	zero rate goods			01/07/2013

## T8 - Modes of Transport

way of transport, in general or referred to the specified leg

Agency name: eBIZ

tabella cod.: T8

File codes list (Generic code): [http://www.ebiz.enea.it/moda-ml/repository/codelist/v2018-1/gc\\_T8.xml](http://www.ebiz.enea.it/moda-ml/repository/codelist/v2018-1/gc_T8.xml)

Code	Description	Adoption note	Version status	Date of insertion
1	MARITIME TRANSPORT			
10	Courier			01/07/2013
2	RAIL TRANSPORT			
3	ROAD TRANSPORT			
4	AIR TRANSPORT			
5	MAIL			
6	AIR + SHIP TRANSPORT			
8	INLAND WATER TRANSPORT			
9	MODE UNKNOWN			

## T9 - ISO4217 - Currency

currency code



Agency name: ISO

tabella cod.: T9

File codes list (Generic code): [http://www.ebiz.enea.it/moda-ml/repository/codelist/v2018-1/gc\\_T9.xml](http://www.ebiz.enea.it/moda-ml/repository/codelist/v2018-1/gc_T9.xml)

Table not printed: there are 205 elements, more than the maximum specified for printing: 99.

## Annex C

### New or changed elements towards previous version

Changes or added elements (changes in description excluded; changes in aggregation notes and best practice included): 100

Test Type	Tag	Status	Item type	Changes related to
Attribute	AC_amount	NEW	AC amount	Has NEW attribute: data currency
Element(E)	AC_categoryText	UPDATED	AC category text	Property: Length_Max Old value: 70 New value: 250
Attribute	additionalIdentifier	NEW	Additional Party Identifier	Has NEW attribute: numbering organisation code
Attribute	additionalIdentifier	NEW	Additional Party Identifier	Has NEW attribute: id Qualifier
Element(I)	additionalIdentifier	NEW	Additional Party Identifier	
Attribute	allowanceCharge	NEW	Allowance and Charge	Has NEW attribute: is Charge
Attribute	allowanceCharge	NEW	Allowance and Charge	Has NEW attribute: maximum quantity
Attribute	allowanceCharge	NEW	Allowance and Charge	Has NEW attribute: minimum quantity
Attribute	allowanceCharge	NEW	Allowance and Charge	Has NEW attribute: data currency
Attribute	allowanceCharge	NEW	Allowance and Charge	Has NEW attribute: unit of measure code
Element(E)	art	UPDATED	article identifier	Property: Length_Max Old value: 25 New value: 80
Attribute	art	UPDATED	article identifier	Its attribute: code list reference  Property: Aggregation Note_English Old value: <i>this attribute should be ALTERNATIVE to the others</i> New value: <i>at least one out of this attribute and "numberingOrg" should be set</i>

Element(l)	attachment	NEW	attachment	
Child	attachment	NEW	attachment	Has NEW child of: file name
Child	attachment	NEW	attachment	Has NEW child of: external reference
Child	attachment	NEW	attachment	Has NEW child of: binary object
Attribute	binary Object	NEW	binary object	Has NEW attribute: encoding
Attribute	binary Object	NEW	binary object	Has NEW attribute: mime
Attribute	binary Object	NEW	binary object	Has NEW attribute: format
Attribute	binary Object	NEW	binary object	Has NEW attribute: character set
Element(l)	binary Object	NEW	binary object	
Child	buyer	NEW	Buyer (*)	Has NEW child of: Party identifier
Child	buyer	NEW	Buyer (*)	Has NEW child of: Additional Party Identifier
Attribute	buyer	NEW	Buyer (*)	Has NEW attribute: sender Party qualifier
Element(l)	characterSetCode	NEW	character set code	
Element(l)	characterSet	NEW	character set	
Element(E)	delivery Place	UPDATED	delivery place	Property: Length_Max Old value: 40 New value: 250
Attribute	description	NEW	description	Has NEW attribute: In
Element(E)	description	UPDATED	description	Property: Length_Max Old value: 70 New value: 250
Attribute	despatchDate	NEW	despatch date	Has NEW attribute: date format
Element(l)	despatchDate	NEW	despatch date	
Element(l)	despatchPlace	NEW	despatch place	
Element(E)	email	UPDATED	e-mail	Property: Length_Max Old value: 80 New value: 250

Element(l)	encodingCode	NEW	encoding code	
Element(l)	encoding	NEW	encoding	
Child	externalReference	NEW	external reference	Has NEW child of: uri
Child	externalReference	NEW	external reference	Has NEW child of: format code
Child	externalReference	NEW	external reference	Has NEW child of: character set code
Child	externalReference	NEW	external reference	Has NEW child of: mime code
Child	externalReference	NEW	external reference	Has NEW child of: encoding code
Element(l)	externalReference	NEW	external reference	
Attribute	fileName	NEW	file name	Has NEW attribute: numbering organisation code
Element(l)	fileName	NEW	file name	
Element(l)	formatCode	NEW	format code	
Element(l)	format	NEW	format	
Attribute	note	UPDATED	general note	Its attribute: numbering organisation code  Property: Aggregation Note_English Old value: New value: <i>must be used to specify the organization that created the list of codes used in "noteLabel"</i>
Element(l)	idQualifier	NEW	id Qualifier	
Element(l)	isCharge	NEW	is Charge	
Element(l)	isURL	NEW	is URL	
Element(E)	legalName	UPDATED	Legal name	Property: Length_Max Old value: 80 New value: 250

Elem(E)	itemID	UPDATE	line item number	Property: Length_Max Old value: 6 New value: 40
Attrib	lineN	UPDATE	line number	Its attribute: VAT rate  Property: Aggregation Note_English Old value: New value: <i>Deprecated, prefer dtScheme when available.</i>
Elem(l)	In	NEW	In	
Elem(l)	maxQty	NEW	maximum quantity	
Elem(l)	mimeCode	NEW	mime code	
Elem(l)	mime	NEW	mime	
Elem(l)	progr	NEW	progressive number	
Child	rawMnrOperation	UPDATE	raw manufacturing operation	relationship with child: reference document details  Property: Cardmax Old value: 1 New value: 9
Child	rawMnrOperation	UPDATE	raw manufacturing operation	relationship with child: general note  Property: Cardmax Old value: 19 New value: 99
Elem(E)	rawCharacterText	UPDATE	raw material characteristics text	Property: Length_Max Old value: 40 New value: 250
Child	rawCode	UPDATE	raw material code	relationship with child: description  Property: Cardmax Old value: 1 New value: 999
Child	rawCode	UPDATE	raw material code	relationship with child: description  Property: Aggregation Note_English Old value: New value: <i>Raw material description</i>
Child	rawComponent	UPDATE	raw material component	relationship with child: reference document details  Property: Cardmax Old value: 1 New value: 9

Child	rawComponent	UPDATED	raw material component	relationship with child: product quantity  Property: BestPractice_English Old value: New value: <i>this element can have two instances only if the units of measure are different</i>
Child	rawComponent	UPDATED	raw material component	relationship with child: general note  Property: Cardmax Old value: 19 New value: 99
Child	rawProd	UPDATED	raw material product	relationship with child: general note  Property: Cardmax Old value: 19 New value: 99
Child	RDCO header	UPDATED	RDCO header	relationship with child: Third Party  Property: Cardmax Old value: 1 New value: 5
Child	RDCO header	UPDATED	RDCO header	relationship with child: general note  Property: Cardmax Old value: 19 New value: 99
Child	RDCO item	UPDATED	RDCO item	relationship with child: Third Party  Property: Cardmax Old value: 1 New value: 3
Child	RDCO item	UPDATED	RDCO item	relationship with child: product quantity  Property: BestPractice_English Old value: New value: <i>this element can have two instances only if the units of measure are different</i>
Child	RDCO item	UPDATED	RDCO item	relationship with child: general note  Property: Cardmax Old value: 19 New value: 99
Child	refDoc	NEW	reference document details	Has NEW child of: attachment

Child	refDoc	UPD ATED	reference document details	relationship with child: document identifier  Property: BestPractice_English Old value: New value: <i>numberingOrg indicates the role that produced the document identifier (it is allowed to declare two different ones -e.g. customer and supplier - with two docID with different numberingOrg)</i>
Attribute	season	NEW	season identifier	Has NEW attribute: code list reference
Attribute	season	NEW	season identifier	Has NEW attribute: numbering organisation code
Attribute	season	NEW	season identifier	Has NEW attribute: code list name
Attribute	season	NEW	season identifier	Has NEW attribute: code list version
Child	subContractor	NEW	Sub-contractor (*)	Has NEW child of: Party identifier
Attribute	subContractor	NEW	Sub-contractor (*)	Has NEW attribute: sender Party qualifier
Element(l)	subDepartment	NEW	department identifier	
Attribute	legalRef	NEW	tax legal reference	Has NEW attribute: code list name
Attribute	legalRef	NEW	tax legal reference	Has NEW attribute: numbering organisation code
Attribute	legalRef	NEW	tax legal reference	Has NEW attribute: code list version
Attribute	legalRef	UPD ATED	tax legal reference	Its attribute: code list reference  Property: Use Old value: <i>Required</i> New value: <i>Optional</i>
Child	dtScheme	UPD ATED	tax scheme	relationship with child: general note  Property: Cardmax Old value: 19 New value: 99
Element(E)	payTermText	UPD ATED	terms of payment text	Property: Length_Max Old value: 40 New value: 250
Element(E)	incotermsText	UPD ATED	terms of trade text	Property: Length_Max Old value: 70 New value: 250
Element(E)	method	UPD ATED	test method identifier	Property: Length_Max Old value: 25 New value: 80

Child	thirdParty	NEW	Third Party (*)	Has NEW child of: Party identifier
Attribute	thirdParty	NEW	Third Party (*)	Has NEW attribute: sender Party qualifier
Child	terms	UPDATE	Trade conditions	relationship with child: Transport information  Property: Cardmax Old value: 1 New value: 5
Element(E)	transConditionText	UPDATE	transport condition - text	Property: Length_Max Old value: 100 New value: 250
Child	transInfo	NEW	Transport information	Has NEW child of: despatch place
Child	transInfo	NEW	Transport information	Has NEW child of: despatch date
Child	transInfo	NEW	Transport information	Has NEW child of: effective delivery date
Attribute	transInfo	NEW	Transport information	Has NEW attribute: progressive number
Attribute	price	NEW	unit price amount	Has NEW attribute: data currency
Element(E)	price	UPDATE	unit price amount	Property: Digits_Dec Old value: 2 New value: 4
Attribute	uri	NEW	uri	Has NEW attribute: is URL
Element(I)	uri	NEW	uri	



## Annex D

### New or changed tables and codes towards previous version

Changes or added items (changes in CodeListAgencyName excluded; changes in adoption notes and code description included): 155

Test Type	Status	Table code	Table description	Code	Change description
Table	UPDATED	NT100	eBIZ TCFUpstream version		Description_English Old value: <i>eBIZ Moda-ML version</i> New value: <i>eBIZ TCFUpstream version</i>
Code	NEW	NT100		2018-1 (v2018-1)	
Code	NEW	NT100		draft (draft)	
Table	UPDATED	NT16	VAT rate or code		Generalities Old value: <i>VAT rate or code ( deprecated, use dtScheme element )</i> New value: <i>VAT rate or code ( DEPRECATED, use dtScheme element )</i>
Code	NEW	NT2		AU (Auditor)	
Code	NEW	NT2		CE (Certification authority)	
Code	NEW	NT2		SC (Sub contractor)	
Code	NEW	NT2		SM (Service/ePlatform manager)	
Code	NEW	NT6		EB (eBIZ)	
Code	UPDATED	NT6		ML (DEPRECATED)	adoption_note Old value: New value: <i>DEPRECATED</i>
Table	NEW	NT60	language, codes from ISO 639-1 (subset)		
Code	NEW	NT60		F (Female)	
Code	NEW	NT60		af (Afrikaans)	
Code	NEW	NT60		ar (Arabic)	

Co de	NEW	NT 60		<i>be</i> (Belarusian)	
Co de	NEW	NT 60		<i>bg</i> (Bulgarian)	
Co de	NEW	NT 60		<i>bn</i> (Bengali)	
Co de	NEW	NT 60		<i>bo</i> (Tibetan)	
Co de	NEW	NT 60		<i>bs</i> (Bosnian)	
Co de	NEW	NT 60		<i>ca</i> (Catalan, Valencian)	
Co de	NEW	NT 60		<i>cs</i> (Czech)	
Co de	NEW	NT 60		<i>da</i> (Danish)	
Co de	NEW	NT 60		<i>de</i> (German)	
Co de	NEW	NT 60		<i>el</i> (Greek, Modern (1453-))	
Co de	NEW	NT 60		<i>en</i> (English)	
Co de	NEW	NT 60		<i>eo</i> (Esperanto)	
Co de	NEW	NT 60		<i>es</i> (Spanish, Castilian)	
Co de	NEW	NT 60		<i>et</i> (Estonian)	
Co de	NEW	NT 60		<i>eu</i> (Basque)	
Co de	NEW	NT 60		<i>fa</i> (Persian)	
Co de	NEW	NT 60		<i>fi</i> (Finnish)	
Co de	NEW	NT 60		<i>fr</i> (French)	
Co de	NEW	NT 60		<i>ga</i> (Irish)	
Co de	NEW	NT 60		<i>gd</i> (Gaelic, Scottish Gaelic)	
Co de	NEW	NT 60		<i>gn</i> (Guarani)	
Co de	NEW	NT 60		<i>he</i> (Hebrew)	

Co de	NEW	NT 60		<i>hr</i> (Croatian)	
Co de	NEW	NT 60		<i>ht</i> (Haitian, Haitian Creole)	
Co de	NEW	NT 60		<i>hu</i> (Hungarian)	
Co de	NEW	NT 60		<i>hy</i> (Armenian)	
Co de	NEW	NT 60		<i>ia</i> (Interlingua (International Au xiliary Language Association ))	
Co de	NEW	NT 60		<i>id</i> (Indonesian)	
Co de	NEW	NT 60		<i>is</i> (Icelandic)	
Co de	NEW	NT 60		<i>it</i> (Italian)	
Co de	NEW	NT 60		<i>ja</i> (Japanese)	
Co de	NEW	NT 60		<i>ju</i> (Javanese)	
Co de	NEW	NT 60		<i>ka</i> (Georgian)	
Co de	NEW	NT 60		<i>km</i> (Central Khmer)	
Co de	NEW	NT 60		<i>ko</i> (Korean)	
Co de	NEW	NT 60		<i>ku</i> (Kurdish)	
Co de	NEW	NT 60		<i>lb</i> (Luxembourgish, Letzeburge sch)	
Co de	NEW	NT 60		<i>lo</i> (Lao)	
Co de	NEW	NT 60		<i>lt</i> (Lithuanian)	
Co de	NEW	NT 60		<i>lv</i> (Latvian)	
Co de	NEW	NT 60		<i>mg</i> (Malagasy)	
Co de	NEW	NT 60		<i>mk</i> (Macedonian)	
Co de	NEW	NT 60		<i>mn</i> (Mongolian)	

Co de	NEW	NT 60		<i>mt</i> (Maltese)	
Co de	NEW	NT 60		<i>nl</i> (Dutch, Flemish)	
Co de	NEW	NT 60		<i>no</i> (Norwegian)	
Co de	NEW	NT 60		<i>pl</i> (Polish)	
Co de	NEW	NT 60		<i>pt</i> (Portuguese)	
Co de	NEW	NT 60		<i>ro</i> (Romanian, Moldavian, Mold ovan)	
Co de	NEW	NT 60		<i>ru</i> (Russian)	
Co de	NEW	NT 60		<i>se</i> (Northern Sami)	
Co de	NEW	NT 60		<i>sk</i> (Slovak)	
Co de	NEW	NT 60		<i>sl</i> (Slovenian)	
Co de	NEW	NT 60		<i>sm</i> (Samoan)	
Co de	NEW	NT 60		<i>so</i> (Somali)	
Co de	NEW	NT 60		<i>sq</i> (Albanian)	
Co de	NEW	NT 60		<i>sr</i> (Serbian)	
Co de	NEW	NT 60		<i>sv</i> (Swedish)	
Co de	NEW	NT 60		<i>sw</i> (Swahili)	
Co de	NEW	NT 60		<i>ta</i> (Tamil)	
Co de	NEW	NT 60		<i>th</i> (Thai)	
Co de	NEW	NT 60		<i>tr</i> (Turkish)	
Co de	NEW	NT 60		<i>uk</i> (Ukrainian)	
Co de	NEW	NT 60		<i>ur</i> (Urdu)	
Co de	NEW	NT 60		<i>uz</i> (Uzbek)	

Code	NEW	NT 60		<i>vi</i> (Vietnamese)	
Code	NEW	NT 60		<i>zh</i> (Chinese)	
Code	NEW	NT 7		<i>CMK</i> (square centimetre)	
Code	NEW	NT 7		<i>CMQ</i> (cubic centimetre)	
Code	NEW	NT 7		<i>E37</i> (pixel)	
Code	NEW	NT 7		<i>KWH</i> (kilowatthours)	
Code	NEW	NT 7		<i>MMK</i> (square millimetre)	
Code	NEW	NT 7		<i>MTK</i> (square metre)	
Code	NEW	NT 7		<i>CO2TON</i> (ton of CO2)	
Table	UPDATE	NT 7	unit of measure		OtherExternalReferenceURL Old value: New value: <a href="http://docs.oasis-open.org/ubl/os-UBL-2.1/cl/gc/default/UnitOfMeasureCode-2.1.gc#">#http://docs.oasis-open.org/ubl/os-UBL-2.1/cl/gc/default/UnitOfMeasureCode-2.1.gc#</a>
Table	UPDATE	NT 7	unit of measure		Description_English Old value: <i>unity of measure</i> New value: <i>unit of measure</i>
Code	NEW	T2 1		<i>BOR</i> (blanket order)	
Code	NEW	T2 1		<i>CEO</i> (Certificate of origin)	
Code	NEW	T2 1		<i>CER</i> (Certificate)	
Code	UPDATE	T2 1		<i>CTR</i> (Contract)	Text_English Old value: <i>contract</i> New value: <i>Contract</i>
Code	NEW	T2 1		<i>MCI</i> (Visual merchandising instruction)	
Code	NEW	T2 1		<i>VMI</i> (visual merchandising instructions)	
Code	NEW	T4 1		1 (Agreed settlement)	
Code	NEW	T4 1		2 (Below specification goods)	
Code	NEW	T4 1		3 (Damaged goods)	

Co de	NEW	T4 1		4 (Short delivery)	
Co de	NEW	T4 1		7 (Payment on account)	
Co de	NEW	T4 1		8 (Returnable container charge included)	
Co de	NEW	T4 1		9 (Invoice error)	
Co de	NEW	T4 1		10 (Costs for draft)	
Co de	NEW	T4 1		11 (Bank charges)	
Co de	NEW	T4 1		12 (Agent commission)	
Co de	NEW	T4 1		14 (Wrong delivery)	
Co de	NEW	T4 1		15 (Goods returned to agent)	
Co de	NEW	T4 1		16 (Goods partly returned)	
Co de	NEW	T4 1		17 (Transport damage)	
Co de	NEW	T4 1		19 (Trade discount)	
Co de	NEW	T4 1		20 (Deduction for late delivery)	
Co de	NEW	T4 1		21 (Advertising costs)	
Co de	NEW	T4 1		22 (Customs duties)	
Co de	NEW	T4 1		23 (Telephone and postal costs)	
Co de	NEW	T4 1		24 (Repair costs)	
Co de	NEW	T4 1		25 (Attorney fees)	
Co de	NEW	T4 1		26 (Taxes)	
Co de	NEW	T4 1		30 (Direct payment to seller)	
Co de	NEW	T4 1		32 (Goods not delivered)	
Co de	NEW	T4 1		33 (Late delivery)	

Co de	NEW	T4 1		35 (Goods returned)	
Co de	NEW	T4 1		36 (Invoice not received)	
Co de	NEW	T4 1		37 (Credit note to debtor/not to us)	
Co de	NEW	T4 1		38 (Deducted bonus)	
Co de	NEW	T4 1		39 (Deducted discount)	
Co de	NEW	T4 1		40 (Deducted freight costs)	
Co de	NEW	T4 1		41 (Deduction against other inv oices)	
Co de	NEW	T4 1		42 (Credit balance(s))	
Co de	NEW	T4 1		45 (Debit note to seller)	
Co de	NEW	T4 1		46 (Discount beyond terms)	
Co de	NEW	T4 1		48 (Allowance/charge error)	
Co de	NEW	T4 1		49 (Substitute product)	
Co de	NEW	T4 1		50 (Terms of sale error)	
Co de	NEW	T4 1		52 (Wrong invoice)	
Co de	NEW	T4 1		53 (Duplicate invoice)	
Co de	NEW	T4 1		54 (Weight error)	
Co de	NEW	T4 1		55 (Additional charge not author ized)	
Co de	NEW	T4 1		56 (Incorrect discount)	
Co de	NEW	T4 1		57 (Price change)	
Co de	NEW	T4 1		58 (Variation)	
Co de	NEW	T4 1		59 (Chargeback)	

Code	NEW	T4 1		65 (Settlement to agent)	
Code	NEW	T4 1		66 (Cash discount)	
Code	NEW	T4 1		70 (Wrong monetary amount resulting from incorrect free goods quantity)	
Code	NEW	T4 1		72 (Temporary special promotion)	
Code	NEW	T4 1		73 (Difference in tax rate)	
Code	NEW	T4 1		74 (Quantity discount)	
Code	NEW	T4 1		75 (Promotion discount)	
Code	NEW	T4 1		76 (Cancellation deadline passed)	
Code	NEW	T4 1		77 (Pricing discount)	
Code	NEW	T4 1		78 (Volume discount)	
Code	NEW	T4 1		79 (Sundry discount)	
Table	UPDATE	T4 1	type of Allowance or Charge		Generalities Old value: <i>coded specification of an Allowance or Charge</i> New value: <i>coded specification of an Allowance or Charge (elaborated from UNECE 4465)</i>
Code	NEW	T4 4		CO (company identification code)	